

What Language Model to Train if You Have One Million GPU Hours?

The BigScience Architecture & Scaling Group

Teven Le Scao^{1*} Thomas Wang^{1*} Daniel Hesslow^{2*} Lucile Saulnier^{1*} Stas Bekman^{1*}
M Saiful Bari³ Stella Biderman^{4,5} Hady Elsahar⁶ Niklas Muennighoff¹ Jason Phang⁵ Ofir Press⁸
Colin Raffel¹ Victor Sanh¹ Sheng Shen⁹ Lintang Sutawika¹⁰ Jaesung Tae¹ Zheng Xin Yong¹¹
Julien Launay^{2,12†} Iz Beltagy^{13†}

¹ Hugging Face ² LightOn ³ NTU, Singapore ⁴ Booz Allen ⁵ EleutherAI ⁶ Naver Labs Europe ⁷ New York University
⁸ University of Washington ⁹ Berkeley University ¹⁰ Big Science ¹¹ Brown University ¹² LPENS ¹³ Allen Institute for AI

Abstract

The crystallization of modeling methods around the Transformer architecture has been a boon for practitioners. Simple, well-motivated architectural variations can transfer across tasks and scale, increasing the impact of modeling research. However, with the emergence of state-of-the-art 100B+ parameters models, large language models are increasingly expensive to accurately design and train. Notably, it can be difficult to evaluate how modeling decisions may impact emergent capabilities, given that these capabilities arise mainly from sheer scale alone. In the process of building BLOOM—the Big Science Large Open-science Open-access Multilingual language model—our goal is to identify an architecture and training setup that makes the best use of our 1,000,000 A100-GPU-hours budget. Specifically, we perform an ablation study at the billion-parameter scale comparing different modeling practices and their impact on zero-shot generalization. In addition, we study the impact of various popular pre-training corpora on zero-shot generalization. We also study the performance of a multilingual model and how it compares to the English-only one. Finally, we consider the scaling behaviour of Transformers to choose the target model size, shape, and training setup. All our models and code are open-sourced at <https://huggingface.co/bigscience>.

1 Introduction

Recent years have seen the advent of large language models characterized by emergent capabilities (e.g., zero-shot generalization) arising from sheer scale alone (Radford et al., 2019; Brown et al., 2020). Scaling LLMs results in a predictable increase in performance: simple scaling laws connect the number of parameters, pretraining dataset size, and compute budget (Kaplan et al., 2020; Ganguli et al., 2022; Hoffmann et al., 2022), providing a clear

*Equal contribution.

†Equal supervision.

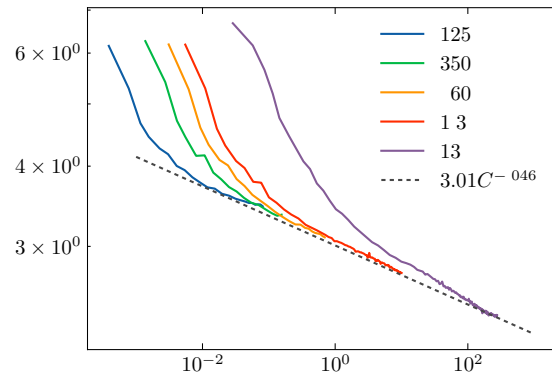


Figure 1: **Smooth scaling of language modeling loss as compute budget and model size increase.** We observe a power-law coefficient $\alpha_C \sim 0.046$, in-line with Kaplan et al. (2020). We use this fit to estimate the optimal size and number of tokens to train on for the final model given the available budget.

path towards more capable models. This paradigm shift has been fueled by the wide adoption of the Transformer (Vaswani et al., 2017), providing a scalable basis for practitioners to build upon.

In this paper, we design an architecture and training setup for a multilingual 100B+ parameters model (BLOOM, BigScience Workshop (2022)), seeking to best use a fixed 1,000,000 A100-hours budget. Because of the costs involved with training large language models, we cannot exhaustively explore the landscape of possible models. Instead, we position ourselves as practitioners exploring "off-the-shelf" solutions. We thus test promising additions to the Transformer to attempt to reproduce their findings in a controlled, large-scale setting.

Although our main goal was to prepare the architecture and training setup of BLOOM, our findings are also valuable for practitioners building models in the 1-10B range, as they equally improve the performance of such smaller models. At variance with major works on large language models, we also make a significant effort towards reproducibility

and openness: all of our pretrained models, code, and notes from our weekly meetings are made available. See Appendix A for the relevant links.

Contributions. We first study the impact of pre-training corpora, positional embeddings, activation functions, and embedding norm on zero-shot generalization. We base our study on the popular GPT-2 architecture (Radford et al., 2019), with experiments at the 1.3B parameters scale. We then consider the impact of massive multilinguality, showing language-specific scaling laws in a multilingual setting for the first time. Finally, we describe our approach to drafting an architecture for the final 176B parameters BLOOM model.

2 Methods

We first justify our choice to base our model on the popular recipe of combining a decoder-only model with an autoregressive language modeling objective, and introduce our experimental setup. We then discuss our evaluation benchmarks, and motivate our choice of zero-shot generalization as our key metric. Finally, we introduce the baselines we compare to throughout the paper.

2.1 Architecture and Pretraining Objective

In this paper, we base all models on a decoder-only Transformer pretrained with an autoregressive language modeling objective. This is a popular choice for large language models (Brown et al., 2020; Rae et al., 2021; Thoppilan et al., 2022), possibly because it lends itself to zero-shot application to many downstream tasks (Radford et al., 2019). Alternatives include encoder-decoder models trained with a span-corruption objective (e.g., T5 Raffel et al. (2019)), as well as non-causal decoders models with visibility over a prefix (so-called Prefix LMs, Liu et al. (2018); Dong et al. (2019)).

Our decision is motivated by the findings of Wang et al. (2022), which showed that decoder-only models combined with an autoregressive language modeling objective provide the best zero-shot generalization abilities immediately after pre-training. Although multitask finetuning (Sanh et al., 2021; Wei et al., 2021) will instead favor an encoder-decoder with span corruption for best zero-shot generalization, Wang et al. (2022) found a compromise between these two practices. Following autoregressive pretraining, decoder-only models can be efficiently adapted into non-causal decoders, simply by extending pretraining with

span corruption. This adaptation produces a second model, which can provide excellent zero-shot generalization after multitask finetuning. Accordingly, we follow their recommendation, and train an autoregressive decoder-only model first which we will later consider adapting and finetuning.

2.2 Experimental Setup

We follow the architectures GPT-2 (Radford et al., 2019) and the hyperparameters of GPT-3 (Brown et al., 2020). For learning rate, we use a maximum value of 2×10^{-4} , with a linear warm-up over 375M tokens, followed by cosine decay to a minimum value of 1×10^{-5} . We use a 1M tokens batch size, with linear ramp-up over the first 4B tokens, and a sequence length of 2,048. We use the Adam optimizer (Kingma and Ba, 2014), with $\beta_1 = 0.9$, $\beta_2 = 0.999$, $\epsilon = 1 \times 10^{-8}$, weight decay 0.1, and gradient clipping to 1.0. We also tie the word embedding and softmax matrix (Press and Wolf, 2017). Unless noted otherwise, we conduct our experiments with 1.3B parameters models, pretraining on 112B tokens.

We picked this size and dataset size as a compromise between compute cost and the likelihood that our conclusions would transfer to the target 100B+ model. Notably, we needed to be able to reliably measure zero-shot generalization above random chance. We note that training for 112B tokens 1.3B parameters models bring them significantly above the optimality threshold of Kaplan et al. (2020), and of Hoffmann et al. (2022).

The main architectural difference with GPT-3 is that all our layers use full attention, while GPT-3 uses alternating sparse attention layers (Child et al., 2019). The main value of sparse attention layers is to save compute with long sequence lengths. However, at the 100B+ scale, sparse attention layers provide negligible compute savings, as the vast majority of the compute is spent on the large feed-forward layers. Kaplan et al. (2020) estimated the amount of compute per token to be:

$$C_{\text{forward}} = 2 \times (12n_{\text{layer}}d^2 + n_{\text{layer}}n_{\text{ctx}}d),$$

where C_{forward} is the cost for the forward pass, n_{layer} is the number of layers, d is the hidden dimension, and n_{ctx} is the sequence length. This means if $12d \gg n_{\text{ctx}}$, the second $n_{\text{layer}}n_{\text{ctx}}d$ term is negligible, which is the case for our final model where $d > 10,000$ and $n_{\text{ctx}} = 2048$.

| Model | Parameters | Pretraining tokens | | | |
|----------------------|------------|--------------------|--------------|-------|--------------|
| | | Dataset | 112B | 250B | 300B |
| OpenAI — Curie | 6.7B | | | | <u>49.28</u> |
| OpenAI — Babbage | 1.3B | | | | 45.30 |
| EleutherAI — GPT-Neo | 1.3B | The Pile | | | 42.94 |
| Ours | 13B | OSCAR v1 | | | 47.09 |
| | 1.3B | The Pile | 42.79 | 43.12 | 43.46 |
| Ours | 1.3B | C4 | 42.77 | | |
| | 1.3B | OSCAR v1 | 41.72 | | |

Table 1: **Pretraining datasets with diverse cross-domain high-quality data improves zero-shot generalization.** Average accuracy on EAI harness (higher is better) using different pretraining corpora and comparison with baseline models. **Bold is best 1.3B model for amount of tokens seen, underline is best overall.**

What is a FLOP exactly? We report throughput per GPU in FLOPS and total budgets in PF-days (i.e. one PFLOPS sustained for a day). It is important to highlight that FLOPS are never directly measured, but always estimated, with widely different practices across papers. We refer to *model* FLOP the estimates based on the $C = 6ND$ formula from Kaplan et al. (2020), where C is the total compute, N the model size, and D the number of tokens processed. These are the FLOP actually used to train the model, and which are used for scaling laws. We refer to *hardware* FLOP the estimates reported by our codebase, using the formula from Narayanan et al. (2021). This notably includes gradient checkpointing, which trades additional computations for reduced memory needs, and a more thorough accounting of operations.

2.3 Evaluation Benchmarks

We measure upstream performance using the language modeling loss on an held out sample of the pretraining dataset. However, it is not always possible to compare losses across objectives and tokenizers. Moreover, as upstream performance is not always aligned with task performance (Tay et al., 2021), we must also measure downstream performance explicitly. We could use zero/few-shot generalization, with or without specific finetuning.

Specifically, we choose to measure zero-shot generalization on a diverse set of tasks. Few-shot and zero-shot results are strongly correlated: we found a Pearson correlation coefficient of 0.93 between zero-shot and few-shot performance across model sizes in Brown et al. (2020). We do not rely on finetuning as it is not how the main final model

is likely to be used, given its size and the challenges associated with finetuning at the 100B+ scale.

We use the popular EleutherAI Language Model Evaluation Harness (EAI harness, Gao et al. (2021)), evaluating models across 27 diverse tasks that are similar to those used in Brown et al. (2020) (see Appendix C for a list of tasks). Overall, the random baseline on our benchmark sits at 33.3%.

2.4 Baselines

We use GPT-Neo (Black et al., 2021), a 1.3B decoder-only autoregressive language model trained on the Pile (Gao et al., 2020), and GPT-3 (Brown et al., 2020), accessed via the OpenAI API. We evaluate two models, Babbage and Curie¹. Based on Gao (2021) and our own analysis, we assume Babbage is 1.3B while Curie is 6.7B based on how close our computed results are to those reported in the original paper. However, as details of the OpenAI API are kept secret, there is no way to make sure that the models are actually the ones described in Brown et al. (2020) – the number of pretraining tokens reported in Table 1 is thus to be taken cautiously.

3 Impact of Pretraining Data

We first study the impact of pretraining data on zero-shot generalization. More diverse pretraining data, ideally curated from a cross-domain collection of high-quality datasets, has been suggested to help with downstream task performance and zero-shot generalization (Rosset, 2020; Gao et al., 2020).

¹These models are now referred to as text-babbage-001 and text-curie-001.

3.1 Corpora

We evaluate three possible corpora, all commonly used to train large language models:

- **OSCAR v1** (Ortiz Suárez et al., 2019)², a multilingual, filtered version of Common Crawl;
- **C4** (Raffel et al., 2019), specifically its replication by AllenAI, a processed and filtered version of Common Crawl;
- **The Pile** (Gao et al., 2020), a diverse pre-training corpus that contains webscrapes from Common Crawl in addition to high-quality data from cross-domain sources such as academic texts and source code.

For each pretraining corpus, we train a 1.3B parameter model for 112B tokens. For the Pile specifically, motivated by good early results at 112B tokens, we train up to 300B tokens, to compare with GPT-3 models and validate against GPT-Neo.

3.2 Results

Evaluation results are outlined in Table 1. We find that training on the Pile produces models that are better at zero-shot generalization, with C4 a close second, and OSCAR significantly behind.

Importantly, this finding transfers to larger scales: as part of engineering test runs, a 13B model was trained on OSCAR for 300B tokens. We found this 13B model to underperform the 6.7B model from OpenAI API which we attribute to the low quality of the English data in OSCAR.

We also note that our model trained on The Pile outperforms the 1.3B GPT-Neo trained on the same dataset. Finally, our 1.3B model still underperforms the 1.3B model from the OpenAI API by 1.6%. It seems most likely that the difference is that of data, but we cannot investigate this further as the GPT-3 training dataset is neither publicly available nor reproducible.

Finding 1. Diverse cross-domain pretraining data combining web crawls with curated high-quality sources improves zero-shot generalization over pretraining datasets constructed from Common Crawl only.

²The recent release of OSCAR v2 is a better dataset, but it wasn't available when we started this project.

4 Architecture Ablations

We now consider ablation studies to better identify the best positional embedding, activation function, and embedding normalization placement.

4.1 Positional Embeddings

Background Originally, both static sinusoidal position embeddings and learned position embeddings were proposed to capture positional information; the latter are popular in large language models (Brown et al., 2020). Su et al. (2021) proposed rotary embeddings, where the query and key representations inside the self-attention mechanism are modified such that the attention captures relative distances between them. Recently, Press et al. (2022) introduced a method which does not use embeddings, instead directly attenuating the attention scores based on how far away the keys/queries are.

Results We compare learned, rotary, and ALiBi position embeddings, and include a baseline without position embeddings. Our results are presented in Table 2. Although learned positional embeddings outperform rotary embeddings, ALiBi yields significantly better results than all alternatives. We also confirm the findings of Biderman (2021): a baseline with no positional information exhibits competitive performance. While bidirectional models require positional embeddings to determine the location of tokens, we find autoregressive models can simply leverage the causal attention mask. We also confirm the ability of ALiBi to extrapolate to longer sequences than trained on in Figure 2. Note that results in Table 2 do not use any extrapolation: ALiBi embeddings are a better choice even without taking into account their ability to extrapolate.

Finding 2. ALiBi positional embeddings significantly outperforms other embeddings for zero-shot generalization.

| Positional Embedding | Average EAI Results |
|----------------------|---------------------|
| None | 41.23 |
| Learned | 41.71 |
| Rotary | 41.46 |
| ALiBi | 43.70 |

Table 2: **ALiBi significantly outperforms other embeddings for zero-shot generalization.** All models are trained on the OSCAR dataset for 112 billion tokens.

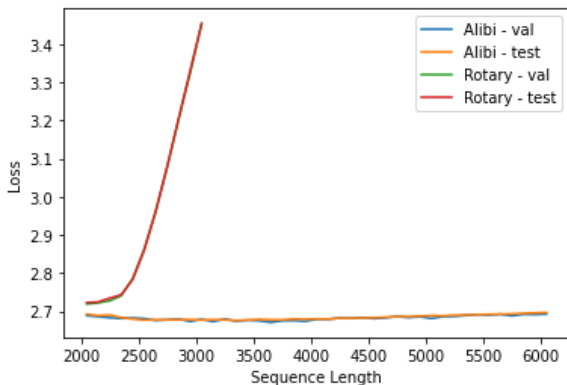


Figure 2: **ALiBi embeddings can effectively extrapolate past the sequence length on which the model was trained, while rotary embeddings can not.** This is in line with the findings of Press et al. (2022).

4.2 Activation Functions

Background. Large language models by and large still mostly use the GELU activation (Hendrycks and Gimpel, 2016). We evaluate a recently proposed alternative, SwiGLU (Shazeer, 2020), which combines both Gated Linear Units (Dauphin et al., 2016) with the Swish activation function (Ramachandran et al., 2017).

SwiGLU uses 50% extra parameters in the feed-forward layers. As suggested in Shazeer (2020), we compensate for this by reducing the hidden size of the feed-forward layer.

Results. We present our results in Table 3. SwiGLU produces slightly better results than GELU. For our final model, we adopted GELU, as we initially observed a lower throughput for SwiGLU. However, further benchmarking identified that this overhead was primarily associated with the change in the hidden size of the feedforward network. Indeed, this new size, 5,456, is divisible by neither the warp size of the GPU (Lashgar et al., 2013) nor the number of streaming multiprocessors, resulting in both tile and wave quantization. We accordingly recommend using SwiGLU for future models.

| Activation function | Average EAI Results |
|---------------------|---------------------|
| GELU | 42.79 |
| SwiGLU | 42.95 |

Table 3: **SwiGLU slightly outperforms GELU for zero-shot generalization.** Models trained on The Pile for 112 billion tokens.

4.3 Embedding Norm

Dettmers et al. (2021) suggests that greater stability of training can be achieved by including an extra layer normalization (Ba et al., 2016) after the embedding layer. We evaluate the performance impact of such a modification in Table 4. We note that this incurs a significant reduction in the performance of the model. However, models above 100 billion parameters are notoriously unstable and require considerable engineering efforts in order to be kept stable. If this addition provides increased stability when training, it may be valuable.

Finding 3. Adding layer normalization after the embedding layer incurs a significant penalty on zero-shot generalization.

5 Multilinguality

The majority of 100B+ language models have been trained in English, with notable exceptions in Chinese (Zeng et al., 2021; Wu et al., 2021) and Korean (Kim et al., 2021) models. Smaller massively multilingual models have seen wider adoption (Xue et al., 2020), but these models are not suitable for zero-shot. Recent results on large GPT-like multilingual models show that English-only performance is usually disappointing (Lin et al., 2021).

Training data. We train a multilingual model to evaluate the effectiveness and potential impacts of this practice. We use the OSCAR dataset (Ortiz Suárez et al., 2019), but here we include multiple languages, not only English as in the earlier experiments. The languages we include are Arabic, Basque, Bengali, Chinese, Catalan, English, French, Hindi, Indonesian, Portuguese, Spanish, Urdu, and Vietnamese. We sample each language with a different probability that downsamples the most frequent languages and upsamples the least frequent ones, so that all languages are represented. We estimate the sampling probabilities similar to Xue et al. (2021).

| Embedding Norm | Average EAI Results |
|----------------|---------------------|
| No | 43.46 |
| Yes | 42.24 |

Table 4: **Layer normalization after the embedding layer diminishes performance significantly.** Models trained on The Pile for 300 billion tokens.

| Model | Size | EN | ZH | ES | FR | VI | AR | HI | UR | Average |
|-------------------|------|-------|-------|-------|-------|-------|-------|-------|-------|---------|
| XGLM (Lin et al.) | 7.5B | 54.5 | 45 | 38.2 | 50.7 | 47.5 | 47.5 | 43.4 | 42.7 | 46.19 |
| XGLM (reprod.) | 7.5B | 53.85 | 45.21 | 41.7 | 49.82 | 47.35 | 46.37 | 43.19 | 42.3 | 46.22 |
| XGLM | 1.7B | 49.68 | 44.63 | 37.39 | 47.94 | 42.75 | 45.65 | 44.35 | 43.19 | 44.45 |
| Ours | 1.3B | 49.9 | 44.53 | 36.77 | 46.51 | 45.75 | 43.41 | 45.95 | 42.91 | 44.47 |

Table 5: **Our multilingual 1.3B model achieves accuracy on zero-shot XNLI in line with XGLM Lin et al. (2021).** First row is the reported XGLM results, and the second is our reproduction of their results to validate our multilingual evaluation setup. Last two rows show that our multilingual model matches the XGLM results.

English-only evaluation. We first evaluate our multilingual model on the same set of English benchmarks we have used previously, in Table 6. Multilinguality significantly lowers accuracy on the English benchmark, which is in line with the results from Lin et al. (2021).

Multilingual evaluation. Zero-shot multilingual evaluation is more challenging to setup because it requires writing new prompts for each new language. Therefore, instead of manually writing prompts for each language, we follow the strategy proposed by Lin et al. (2021), using English prompts for non-English examples—this can be viewed as cross-lingual zero-shot generalization. They validated this strategy by demonstrating its ability to achieve zero-shot performance on par with (and sometimes even better than) human-written language-specific prompts. This strategy also demonstrates cross-lingual abilities.

We evaluate on XNLI (Conneau et al., 2018), a multilingual NLI dataset that covers 8 of the languages we use for training. Our evaluation is different from the zero-shot evaluation of the XTREME benchmark (Hu et al., 2020). XTREME first finetunes the model on the English training data of each downstream task, then evaluates it on the non-English dataset, attempting cross-lingual generalization. Our evaluation avoids any finetuning, and instead relies entirely on zero-shot generalization.

| Pretraining | Average EAI Results |
|--------------|---------------------|
| English-only | 41.72 |
| Multilingual | 38.55 |

Table 6: **Multilingual pretraining very significantly diminishes English zero-shot generalization.** Both models trained on OSCAR for 112B tokens.

Results. Table 5 shows the XNLI results of our multilingual model and how it compares to XGLM (Lin et al., 2021). We were able to reproduce the results of XGLM-7.5B which validates our evaluation setup. Furthermore, the table shows that the performance of our 1.3B is in line with the XNLI 1.7B model, validating that our multilingual setup achieves competitive results. It is worth noting that our 1.3B model is trained on only 112B tokens from 13 languages while XGLM is trained on 500B tokens from 30 languages. As far as we are aware, this is the first independent replication of the main results of Lin et al. (2021).

Language-specific scaling laws. To explore how scale influences multilinguality, we train a wider range of models (i.e. 0.3-6B parameters) on a larger corpus of more than 300B tokens of text drawn from a variety of languages (Laurençon et al., 2022). In Figure 3, we show scaling laws for Arabic, Catalan, Code, English, Spanish, Basque, French, Indonesian, Assamese, Bengali, Gujarati, Hindi, Kannada, Malayalam, Marathi, Nepali, Odia, Punjabi, Tamil, Telugu, Urdu, aggregated Niger-Congo languages, Portuguese, Vietnamese, Simplified and Traditional Chinese.

Smaller models struggle more with under-represented languages such as those in the Indic and Niger-Congo family. For example, the loss of the sub-1 billion models goes up at the end of training for Malayalam, Odia, and Telugu. As data is not repeated, it is unlikely that this effect is due to overfitting; we interpret this as insufficient capacity in the model to handle many language representations, with data in the dominant language sets causing catastrophic forgetting of less represented languages. In contrast, the largest model sees its loss decrease smoothly for every language: larger models handle multilinguality more easily. Overall, scaling laws coefficients are consistent across well-represented languages, only differing in offsets.

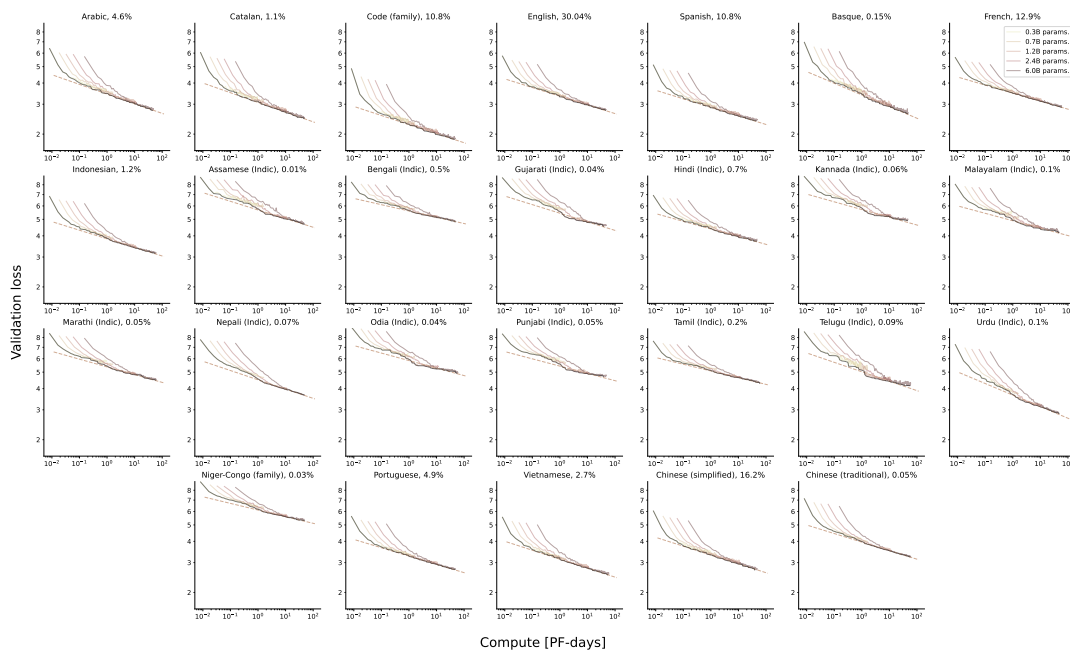


Figure 3: **Scaling laws across languages for the smaller BLOOM models.** Black line is Pareto frontier of optimality (best loss at a given compute), dashed line is best fit. Fit coefficients are detailed in Appendix B. All sufficiently represented languages exhibit similar scaling behaviour, with mostly differences in loss offsets.

6 Scaling to 176B parameters

We now detail how our previous findings influence our architecture and scaling decisions for the final 176B BLOOM model.

Compute allocation. We have been allocated 18 weeks of dedicated use of partition with 52 nodes of 8x 80GB A100 GPUs on the Jean Zay supercomputer. We set four nodes aside as spare, so that our compute budget amounts to 1,161,216 A100-hours in total. Assuming a throughput of 100 model TFLOPS, approximately corresponding to state-of-the-art hardware FLOPS of 150 (Narayanan et al., 2021), we have a compute budget of 4,838 PF-days for the model training. We round this down to 4,500 PF-days, this $\sim 10\%$ safety margin accounting for potential downtime and inefficiencies (e.g., batch size ramp-up) during training. To put this number in perspective, this is $\sim 23\%$ more than the training budget of GPT-3. Given this compute budget, our English-only scaling laws in 1 predict an optimal allocation for training a 392B parameter model for 165B tokens. We will use these as an upper bound in size: the largest model we can afford is 392B parameters, and the minimum number of tokens to train on is 165B tokens.

Model shape. Kaplan et al. (2020) studied the dependence of the loss with model shape, and found only a limited impact within a wide range of feed-forward ratios d_{ff}/d_{model} , aspect ratios d_{model}/n_{layer} , and attention head dimensions.

Levine et al. (2020) proposed a theoretically motivated and empirically backed law describing the optimal compromise between width and depth. They predict that 100B+ parameters models such as GPT-3 are too deep, while models in the 10B or smaller range are usually too shallow. For a GPT-3-sized model with 175B parameters, they predict an ideal depth of 80 layers.

6.1 Final Model Architecture

We set three main guidelines for our final model:

- **300-400B tokens.** We want to guarantee our model will train on around 300-400B tokens of data. This is in the upper range for models in the size range we are pursuing, ensuring that low-resource languages will not be allocated too few tokens. Using the $C = 6ND$ approximation (Kaplan et al., 2020), with $C = 4,500$ PF-days and $D = 300-400$ B tokens, this constrains the model D size to be around 160-200B parameters.

| Model | Size [Bparams.] | Pretraining [Btokens] | Budget [PF-days] | Layers | Hidden dim. | Attention heads num. | Attention heads dim. |
|-------------------------------------|--------------------|--------------------------|---------------------|--------|-------------|-------------------------|-------------------------|
| LaMDA (Thoppilan et al., 2022) | 137 | 432 | 4,106 | 64 | 8,192 | 128 | 64 |
| GPT-3 (Brown et al., 2020) | 175 | 300 | 3,646 | 96 | 12,288 | 96 | 128 |
| J1-Jumbo (Lieber et al., 2021) | 178 | 300 | 3,708 | 76 | 13,824 | 96 | 144 |
| PanGu- α (Zeng et al., 2021) | 207 | 42 | 604 | 64 | 16,384 | 128 | 128 |
| Yuan (Wu et al., 2021) | 245 | 180 | 3,063 | 76 | 16,384 | | |
| Gopher (Rae et al., 2021) | 280 | 300 | 4,313 | 80 | 16,384 | 128 | 128 |
| MT-530B (Smith et al., 2022) | 530 | 270 | 9,938 | 105 | 20,480 | 128 | 160 |

Table 7: **State-of-the-art 100B+ models with publicly available details.** Compute budget is expressed in model PF-days required for training the models, from the $C = 6ND$ approximation of Kaplan et al. (2020). Number of tokens for LaMDA is inferred from reported compute budget and size. Yuan did not report attention head details.

| Model | Size [params.] | Layers | Hidden dim. | Attention heads num. | Attention heads dim. | Memory [GB] | Performance [sec/iter.] | Performance [TFLOPs] |
|-------|-------------------|-----------|---------------|-------------------------|-------------------------|----------------|----------------------------|-------------------------|
| (1) | 178 | 82 | 13,312 | 64 | 208 | 63 | 104 | 152 |
| (2) | 178 | 82 | | 128 | 104 | 60 | 109 | 146 |
| (3) | 176 | 70 | 14,336 | 112 | 128 | 59 | 105 | 150 |

Table 8: **We choose configuration (3) as the final configuration for our 176B model.** (1) was rejected because of high attention heads dimension, and (3) was favored over (2) because of higher throughput. Appendix D details all 20 final configurations benchmarked, only the best three are displayed here.

- **70-80 layers.** From Levine et al. (2020) and the size constraint above, we estimate that our model should have between 70 and 80 layers.
- **Maximum throughput.** Finally, we want the final architecture to have as high of a throughput per GPU as possible, as more compute will translate directly into longer pretraining and thus a better model. Engineering constraints also come into light here: wide shallow models are typically easier to parallelize across nodes, up to a point where excessive tensor parallelism becomes necessary due to memory constraints.

We detail in Table 7 the architectures of current state-of-the-art 100B+ models. From these guidelines, we benchmark 20 model configurations, detailed in Appendix D. Among these configurations, we select three of particular interest, outlined in Table 8. They best fit our guidelines above, and offer high throughput, maximizing our training budget.

We discard configuration (1), as its attention heads are much larger than other models in the literature. Configuration (3) is shallower than recommended by Levine et al. (2020), but delivers 3% higher throughput compared to (2). Thus, we choose configuration (3) and its better throughput, and because a shallower model is easier to deal with at inference time by introducing less latency.

7 Limitations

Optimal scaling. Concurrent to this work, Hoffmann et al. (2022) identified more optimal scaling laws. For our compute budget, they would suggest a 50B parameters model trained for a trillion tokens. Interestingly, even in hindsight, it would have been difficult to follow this recommendation as we would have been limited by the limited availability of high-quality multilingual data and by the size of the BigScience training dataset, ROOTS (Laurençon et al., 2022). Note that our Figure 1 reproduces Kaplan et al. (2020) as we did not account for the learning rate schedule as suggested by Hoffmann et al. (2022).

Other hyperparameters. In this work we have focused on a subset of the available hyperparameter space of large language models. We have investigated architecture decisions around positional embeddings, activation functions and the embedding norm. Alternative attention mechanisms (Tay et al., 2020) or optimizers are examples of other dimensions that could be investigated, potentially leading to improved models.

Efficient fine-tuning. Our study is focused on zero-shot use and does not consider efficient fine-tuning (Lester et al., 2021; Zaken et al., 2021), which is quite relevant for large language models, and which may lead to different conclusions.

8 Conclusion

Seeking to establish the best possible model architecture that can be accommodated within a fixed 1,000,000 GPU-hours compute budget, we have presented an extensive study on principled modeling decisions for large language models.

First, we have found that complimenting Common Crawl data with high-quality cross-domain curated data can boost zero-shot generalization, validating previous suggestions (Rosset, 2020; Gao et al., 2020). Through an ablation study, we have identified ALiBi as the position embedding of choice, confirmed the potential of SwiGLU, and highlighted that stabilizing techniques such as embedding normalization sometimes come at the expense of zero-shot generalization. Exploring multilinguality, we have found that multilingual models significantly underperform their monolingual counterparts on English zero-shot benchmarks, but that they can learn under-resourced languages along with larger ones if given enough scale. Finally, we identified a candidate architecture for BLOOM 176B, outlining the full reasoning behind every architectural parameter, including model shape.

At variance with previous 100B+ models, such as GPT-3 (Brown et al., 2020) or Gopher (Rae et al., 2021), this project was conducted in the open, and resulted in a number of open-access artefacts. Notable similar projects conducted in parallel to this one include OPT (Zhang et al., 2022) and GLM (Zeng et al., 2022), although they lacked the collaborative and massively multilingual components of this project.

We hope our work can help practitioners better understand modeling decisions, leading to better language models, and that this transparency will accelerate future similar work.

Acknowledgements

This work was granted access to the HPC resources of Institut du développement et des ressources en informatique scientifique (IDRIS) du Centre national de la recherche scientifique (CNRS) under the allocation 2021-A0101012475 made by Grand équipement national de calcul intensif (GENCI). In particular, all the trainings ran on the Jean-Zay cluster of IDRIS, and we want to thank the IDRIS team for responsive support throughout the project, in particular Rémi Lacroix. Evaluations of GPT-3 models were provided in part by the Allen Institute for Artificial Intelligence. We thank Leo Gao

for his expertise and advice on language model evaluation.

References

- Aida Amini, Saadia Gabriel, Shanchuan Lin, Rik Koncel-Kedziorski, Yejin Choi, and Hannaneh Hajishirzi. 2019. [MathQA: Towards interpretable math word problem solving with operation-based formalisms](#). In *Proceedings of the 2019 Conference of the North American Chapter of the Association for Computational Linguistics: Human Language Technologies, Volume 1 (Long and Short Papers)*, pages 2357–2367, Minneapolis, Minnesota. Association for Computational Linguistics.
- Stéphane Aroca-Ouellette, Cory Paik, Alessandro Roncone, and Katharina Kann. 2021. [PROST: Physical reasoning about objects through space and time](#). In *Findings of the Association for Computational Linguistics: ACL-IJCNLP 2021*, pages 4597–4608, Online. Association for Computational Linguistics.
- Jimmy Lei Ba, Jamie Ryan Kiros, and Geoffrey E Hinton. 2016. Layer normalization. *arXiv preprint arXiv:1607.06450*.
- Qiang Ning Ben Zhou, Daniel Khashabi and Dan Roth. 2019. “going on a vacation” takes longer than “going for a walk”: A study of temporal commonsense understanding. In *EMNLP*.
- Jonathan Berant, Andrew Chou, Roy Frostig, and Percy Liang. 2013. Semantic parsing on freebase from question-answer pairs. In *Proceedings of the 2013 conference on empirical methods in natural language processing*, pages 1533–1544.
- [@BlancheMinerva] Stella Biderman. 2021. [You: Geostella, #eleutherai sure hypes rotary embeddings a lot. are you sure that they’re that good? me:](#). Twitter.
- BigScience Workshop. 2022. [Bloom \(revision 4ab0472\)](#).
- Yonatan Bisk, Rowan Zellers, Ronan Le Bras, Jianfeng Gao, and Yejin Choi. 2020. Piqa: Reasoning about physical commonsense in natural language. In *Thirty-Fourth AAAI Conference on Artificial Intelligence*.
- Sid Black, Leo Gao, Phil Wang, Connor Leahy, and Stella Biderman. 2021. [GPT-Neo: Large Scale Autoregressive Language Modeling with Mesh-Tensorflow](#). If you use this software, please cite it using these metadata.
- Tom Brown, Benjamin Mann, Nick Ryder, Melanie Subbiah, Jared D Kaplan, Prafulla Dhariwal, Arvind Neelakantan, Pranav Shyam, Girish Sastry, Amanda Askell, Sandhini Agarwal, Ariel Herbert-Voss, Gretchen Krueger, Tom Henighan, Rewon Child, Aditya Ramesh, Daniel Ziegler, Jeffrey Wu, Clemens Winter, Chris Hesse, Mark Chen, Eric Sigler, Matheus Litwin, Scott Gray, Benjamin Chess, Jack

- Clark, Christopher Berner, Sam McCandlish, Alec Radford, Ilya Sutskever, and Dario Amodei. 2020. Language models are few-shot learners. In *Advances in Neural Information Processing Systems*, volume 33, pages 1877–1901.
- Rewon Child, Scott Gray, Alec Radford, and Ilya Sutskever. 2019. Generating long sequences with sparse transformers. URL <https://openai.com/blog/sparse-transformers>.
- Christopher Clark, Kenton Lee, Ming-Wei Chang, Tom Kwiatkowski, Michael Collins, and Kristina Toutanova. 2019. Boolq: Exploring the surprising difficulty of natural yes/no questions. In *NAACL*.
- Peter Clark, Isaac Cowhey, Oren Etzioni, Tushar Khot, Ashish Sabharwal, Carissa Schoenick, and Oyvind Tafjord. 2018. [Think you have solved question answering? try arc, the AI2 reasoning challenge](#). *CoRR*, abs/1803.05457.
- Alexis Conneau, Ruty Rinott, Guillaume Lample, Adina Williams, Samuel R. Bowman, Holger Schwenk, and Veselin Stoyanov. 2018. Xnli: Evaluating cross-lingual sentence representations. In *Proceedings of the 2018 Conference on Empirical Methods in Natural Language Processing*. Association for Computational Linguistics.
- Ido Dagan, Oren Glickman, and Bernardo Magnini. 2005. The pascal recognising textual entailment challenge. In *Machine Learning Challenges Workshop*, pages 177–190. Springer.
- Yann N. Dauphin, Angela Fan, Michael Auli, and David Grangier. 2016. [Language modeling with gated convolutional networks](#). *CoRR*, abs/1612.08083.
- Tim Dettmers, Mike Lewis, Sam Shleifer, and Luke Zettlemoyer. 2021. [8-bit optimizers via block-wise quantization](#).
- William B Dolan and Chris Brockett. 2005. Automatically constructing a corpus of sentential paraphrases. In *Proceedings of the Third International Workshop on Paraphrasing (IWP2005)*.
- Li Dong, Nan Yang, Wenhui Wang, Furu Wei, Xiaodong Liu, Yu Wang, Jianfeng Gao, Ming Zhou, and Hsiao-Wuen Hon. 2019. Unified language model pre-training for natural language understanding and generation. *Advances in Neural Information Processing Systems*, 32.
- Deep Ganguli, Danny Hernandez, Liane Lovitt, Nova DasSarma, Tom Henighan, Andy Jones, Nicholas Joseph, Jackson Kernion, Ben Mann, Amanda Askell, et al. 2022. Predictability and surprise in large generative models. *arXiv preprint arXiv:2202.07785*.
- Leo Gao. 2021. [On the sizes of openai api models](#).
- Leo Gao, Stella Biderman, Sid Black, Laurence Golding, Travis Hoppe, Charles Foster, Jason Phang, Horace He, Anish Thite, Noa Nabeshima, Shawn Presser, and Connor Leahy. 2020. [The Pile: an 800GB dataset of diverse text for language modeling](#). *arXiv preprint arXiv:2101.00027*.
- Leo Gao, Jonathan Tow, Stella Biderman, Sid Black, Anthony DiPofi, Charles Foster, Laurence Golding, Jeffrey Hsu, Kyle McDonell, Niklas Muennighoff, Jason Phang, Laria Reynolds, Eric Tang, Anish Thite, Ben Wang, Kevin Wang, and Andy Zou. 2021. [A framework for few-shot language model evaluation](#).
- Andrew Gordon, Zornitsa Kozareva, and Melissa Roemmele. 2012. [SemEval-2012 task 7: Choice of plausible alternatives: An evaluation of commonsense causal reasoning](#). In **SEM 2012: The First Joint Conference on Lexical and Computational Semantics – Volume 1: Proceedings of the main conference and the shared task, and Volume 2: Proceedings of the Sixth International Workshop on Semantic Evaluation (SemEval 2012)*, pages 394–398, Montréal, Canada. Association for Computational Linguistics.
- Dan Hendrycks and Kevin Gimpel. 2016. Gaussian error linear units (gelus). *arXiv preprint arXiv:1606.08415*.
- Jordan Hoffmann, Sebastian Borgeaud, Arthur Mensch, Elena Buchatskaya, Trevor Cai, Eliza Rutherford, Diego de Las Casas, Lisa Anne Hendricks, Johannes Welbl, Aidan Clark, et al. 2022. Training compute-optimal large language models. *arXiv preprint arXiv:2203.15556*.
- Junjie Hu, Sebastian Ruder, Aditya Siddhant, Graham Neubig, Orhan Firat, and Melvin Johnson. 2020. Xtreme: A massively multilingual multi-task benchmark for evaluating cross-lingual generalization. *ArXiv*, abs/2003.11080.
- Shankar Iyer, Nikhil Dandekar, and Kornel Csernai. 2017. [First quora dataset release: Question pairs](#).
- Qiao Jin, Bhuwan Dhingra, Zhengping Liu, William Cohen, and Xinghua Lu. 2019. Pubmedqa: A dataset for biomedical research question answering. In *Proceedings of the 2019 Conference on Empirical Methods in Natural Language Processing and the 9th International Joint Conference on Natural Language Processing (EMNLP-IJCNLP)*, pages 2567–2577.
- Matt Gardner Johannes Welbl, Nelson F. Liu. 2017. Crowdsourcing multiple choice science questions.
- Mandar Joshi, Eunsol Choi, Daniel S. Weld, and Luke Zettlemoyer. 2017. Triviaqa: A large scale distantly supervised challenge dataset for reading comprehension. In *Proceedings of the 55th Annual Meeting of the Association for Computational Linguistics*, Vancouver, Canada. Association for Computational Linguistics.
- Jared Kaplan, Sam McCandlish, Tom Henighan, Tom B Brown, Benjamin Chess, Rewon Child, Scott Gray, Alec Radford, Jeffrey Wu, and Dario Amodei. 2020. Scaling laws for neural language models. *arXiv preprint arXiv:2001.08361*.

- Daniel Khashabi, Snigdha Chaturvedi, Michael Roth, Shyam Upadhyay, and Dan Roth. 2018. Looking beyond the surface: a challenge set for reading comprehension over multiple sentences. In *Proceedings of North American Chapter of the Association for Computational Linguistics (NAACL)*.
- Boseop Kim, Hyoungseok Kim, Sang-Woo Lee, Gichang Lee, Donghyun Kwak, Dong Hyeon Jeon, Sunghyun Park, Sungju Kim, Seonhoon Kim, Dong Hyung Seo, Heungsub Lee, Minyoung Jeong, Sungjae Lee, Minsub Kim, SukHyun Ko, Seokhun Kim, Taeyong Park, Jinuk Kim, Soyoun Kang, Na-Hyeon Ryu, Kang Min Yoo, Minsuk Chang, Soobin Suh, Sookyo In, Jinseong Park, Kyungduk Kim, Hiun Kim, Jisu Jeong, Yong Goo Yeo, Dong hyun Ham, Do-Hyoung Park, Min Young Lee, Jaewoo Kang, Inho Kang, Jung-Woo Ha, Woo Chul Park, and Nako Sung. 2021. What changes can large-scale language models bring? intensive study on hyper-clova: Billions-scale korean generative pretrained transformers. *ArXiv*, abs/2109.04650.
- Diederik P Kingma and Jimmy Ba. 2014. Adam: A method for stochastic optimization. *arXiv preprint arXiv:1412.6980*.
- Guokun Lai, Qizhe Xie, Hanxiao Liu, Yiming Yang, and Eduard Hovy. 2017. Race: Large-scale reading comprehension dataset from examinations. *arXiv preprint arXiv:1704.04683*.
- Ahmad Lashgar, Amirali Baniyasadi, and Ahmad Khonsari. 2013. Warp size impact in gpus: large or small? In *GPGPU@ASPLOS*.
- Hugo Laurençon, Lucile Saulnier, Thomas Wang, Christopher Akiki, Albert Villanova del Moral, Teven Le Scao, Leandro Von Werra, Chenghao Mou, Eduardo González Ponferrada, Huu Nguyen, Jörg Froberg, Mario Šaško, Quentin Lhoest, Angelina McMillan-Major, Gérard Dupont, Stella Biderman, Anna Rogers, Loubna Ben allal, Francesco De Toni, Giada Pistilli, Olivier Nguyen, Somaieh Nikpoor, Maraim Masoud, Pierre Colombo, Javier de la Rosa, Paulo Villegas, Tristan Thrush, Shayne Longpre, Sebastian Nagel, Leon Weber, Manuel Romero Muñoz, Jian Zhu, Daniel Van Strien, Zaid Alyafeai, Khalid Almubarak, Vu Minh Chien, Itziar Gonzalez-Dios, Aitor Soroa, Kyle Lo, Manan Dey, Pedro Ortiz Suarez, Aaron Gokaslan, Shamik Bose, David Ifeoluwa Adelani, Long Phan, Hieu Tran, Ian Yu, Suhas Pai, Jenny Chim, Violette Lepercq, Suzana Ilic, Margaret Mitchell, Sasha Luccioni, and Yacine Jernite. 2022. *The bigscience ROOTS corpus: A 1.6TB composite multilingual dataset*. In *Thirty-sixth Conference on Neural Information Processing Systems Datasets and Benchmarks Track*.
- Brian Lester, Rami Al-Rfou, and Noah Constant. 2021. The power of scale for parameter-efficient prompt tuning. *arXiv preprint arXiv:2104.08691*.
- Hector Levesque, Ernest Davis, and Leora Morgenstern. 2012. The winograd schema challenge. In *Thirteenth International Conference on the Principles of Knowledge Representation and Reasoning*.
- Yoav Levine, Noam Wies, Or Sharir, Hofit Bata, and Amnon Shashua. 2020. Limits to depth efficiencies of self-attention. *Advances in Neural Information Processing Systems*, 33:22640–22651.
- Opher Lieber, Or Sharir, Barak Lenz, and Yoav Shoham. 2021. Jurassic-1: Technical details and evaluation. Technical report, AI21 Labs.
- Xi Victoria Lin, Todor Mihaylov, Mikel Artetxe, Tianlu Wang, Shuohui Chen, Daniel Simig, Myle Ott, Naman Goyal, Shruti Bhosale, Jingfei Du, Ramakanth Pasunuru, Sam Shleifer, Punit Singh Koura, Vishrav Chaudhary, Brian O’Horo, Jeff Wang, Luke Zettlemoyer, Zornitsa Kozareva, Mona Diab, Ves Stoyanov, and Xian Li. 2021. Few-shot learning with multilingual language models. *ArXiv*, abs/2112.10668.
- Jian Liu, Leyang Cui, Hanmeng Liu, Dandan Huang, Yile Wang, and Yue Zhang. 2020. *Logiqa: A challenge dataset for machine reading comprehension with logical reasoning*. *CoRR*, abs/2007.08124.
- Peter J Liu, Mohammad Saleh, Etienne Pot, Ben Goodrich, Ryan Sepassi, Lukasz Kaiser, and Noam Shazeer. 2018. Generating wikipedia by summarizing long sequences. In *International Conference on Learning Representations*.
- Todor Mihaylov, Peter Clark, Tushar Khot, and Ashish Sabharwal. 2018. Can a suit of armor conduct electricity? a new dataset for open book question answering. In *EMNLP*.
- Deepak Narayanan, Mohammad Shoeybi, Jared Casper, Patrick LeGresley, Mostofa Patwary, Vijay Korthikanti, Dmitri Vainbrand, Prethvi Kashinkunti, Julie Bernauer, Bryan Catanzaro, et al. 2021. Efficient large-scale language model training on gpu clusters using megatron-lm. In *Proceedings of the International Conference for High Performance Computing, Networking, Storage and Analysis*, pages 1–15.
- Pedro Javier Ortiz Suárez, Benoît Sagot, and Laurent Romary. 2019. *Asynchronous pipelines for processing huge corpora on medium to low resource infrastructures*. Proceedings of the Workshop on Challenges in the Management of Large Corpora (CMLC-7) 2019. Cardiff, 22nd July 2019, pages 9 – 16, Mannheim. Leibniz-Institut für Deutsche Sprache.
- Denis Paperno, Germán Kruszewski, Angeliki Lazaridou, Ngoc Quan Pham, Raffaella Bernardi, Sandro Pezzelle, Marco Baroni, Gemma Boleda, and Raquel Fernández. 2016. *The LAMBADA dataset: Word prediction requiring a broad discourse context*. In *Proceedings of the 54th Annual Meeting of the Association for Computational Linguistics (Volume 1: Long Papers)*, pages 1525–1534, Berlin, Germany. Association for Computational Linguistics.

- Mohammad Taher Pilehvar and os'e Camacho-Collados. 2018. [Wic: 10, 000 example pairs for evaluating context-sensitive representations](#). *CoRR*, abs/1808.09121.
- Ofir Press, Noah Smith, and Mike Lewis. 2022. [Train short, test long: Attention with linear biases enables input length extrapolation](#). In *International Conference on Learning Representations*.
- Ofir Press and Lior Wolf. 2017. [Using the output embedding to improve language models](#). In *Proceedings of the 15th Conference of the European Chapter of the Association for Computational Linguistics: Volume 2, Short Papers*, pages 157–163, Valencia, Spain. Association for Computational Linguistics.
- Alec Radford, Jeff Wu, Rewon Child, David Luan, Dario Amodei, and Ilya Sutskever. 2019. Language models are unsupervised multitask learners.
- Jack W Rae, Sebastian Borgeaud, Trevor Cai, Katie Millican, Jordan Hoffmann, Francis Song, John Aslanides, Sarah Henderson, Roman Ring, Susannah Young, et al. 2021. Scaling language models: Methods, analysis & insights from training gopher. *arXiv preprint arXiv:2112.11446*.
- Colin Raffel, Noam Shazeer, Adam Roberts, Katherine Lee, Sharan Narang, Michael Matena, Yanqi Zhou, Wei Li, and Peter J. Liu. 2019. [Exploring the limits of transfer learning with a unified text-to-text transformer](#). *CoRR*, abs/1910.10683.
- Pranav Rajpurkar, Jian Zhang, Konstantin Lopyrev, and Percy Liang. 2016. Squad: 100,000+ questions for machine comprehension of text. *arXiv preprint arXiv:1606.05250*.
- Prajit Ramachandran, Barret Zoph, and Quoc V Le. 2017. Searching for activation functions. *arXiv preprint arXiv:1710.05941*.
- Corby Rosset. 2020. [Turing-nlg: A 17-billion-parameter language model by microsoft](#).
- Keisuke Sakaguchi, Ronan Le Bras, Chandra Bhagavatula, and Yejin Choi. 2019. Winogrande: An adversarial winograd schema challenge at scale. *arXiv preprint arXiv:1907.10641*.
- Victor Sanh, Albert Webson, Colin Raffel, Stephen H. Bach, Lintang A. Sutawika, Zaid Alyafeai, Antoine Chaffin, Arnaud Stiegler, Teven Le Scao, Arun Raja, Manan Dey, M SAIFUL BARI, Canwen Xu, Urmish Thakker, Shanya Sharma Sharma, Eliza Szczechla, Taewoon Kim, Gunjan Chhablani, Nihal V. Nayak, Debajyoti Datta, Jonathan Chang, Mike Tian-Jian Jiang, Han Wang, Matteo Manica, Sheng Shen, Zheng Xin Yong, Harshit Pandey, Rachel Bawden, Thomas Wang, Trishala Neeraj, Jos Rozen, Abheesh Sharma, Andrea Santilli, Thibault Févry, Jason Alan Fries, Ryan Teehan, Stella Rose Biderman, Leo Gao, T. G. Owe Bers, Thomas Wolf, and Alexander M. Rush. 2021. Multitask prompted training enables zero-shot task generalization. *ArXiv*, abs/2110.08207.
- Noam Shazeer. 2020. [Glu variants improve transformer](#).
- Shaden Smith, Mostofa Patwary, Brandon Norick, Patrick LeGresley, Samyam Rajbhandari, Jared Casper, Zhun Liu, Shrimai Prabhumoye, George Zerveas, Vijay Korthikanti, et al. 2022. Using deep-speed and megatron to train megatron-turing nlG 530b, a large-scale generative language model. *arXiv preprint arXiv:2201.11990*.
- Richard Socher, Alex Perelygin, Jean Wu, Jason Chuang, Christopher D Manning, Andrew Ng, and Christopher Potts. 2013. Recursive deep models for semantic compositionality over a sentiment treebank. In *Proceedings of the 2013 conference on empirical methods in natural language processing*, pages 1631–1642.
- Jianlin Su, Yu Lu, Shengfeng Pan, Bo Wen, and Yunfeng Liu. 2021. [Roformer: Enhanced transformer with rotary position embedding](#). *arXiv preprint arXiv:2104.09864*.
- Yi Tay, Mostafa Dehghani, Samira Abnar, Yikang Shen, Dara Bahri, Philip Pham, Jinfeng Rao, Liu Yang, Sebastian Ruder, and Donald Metzler. 2020. Long range arena: A benchmark for efficient transformers. *arXiv preprint arXiv:2011.04006*.
- Yi Tay, Mostafa Dehghani, Jinfeng Rao, William Fedus, Samira Abnar, Hyung Won Chung, Sharan Narang, Dani Yogatama, Ashish Vaswani, and Donald Metzler. 2021. Scale efficiently: Insights from pre-training and fine-tuning transformers. *ArXiv*, abs/2109.10686.
- Romal Thoppilan, Daniel De Freitas, Jamie Hall, Noam Shazeer, Apoorv Kulshreshtha, Heng-Tze Cheng, Alicia Jin, Taylor Bos, Leslie Baker, Yu Du, et al. 2022. Lamda: Language models for dialog applications. *arXiv preprint arXiv:2201.08239*.
- Ashish Vaswani, Noam Shazeer, Niki Parmar, Jakob Uszkoreit, Llion Jones, Aidan N Gomez, Łukasz Kaiser, and Illia Polosukhin. 2017. Attention is all you need. In *Advances in neural information processing systems*, pages 5998–6008.
- Alex Wang, Amanpreet Singh, Julian Michael, Felix Hill, Omer Levy, and Samuel R. Bowman. 2019. GLUE: A multi-task benchmark and analysis platform for natural language understanding. In the Proceedings of ICLR.
- Thomas Wang, Adam Roberts, Daniel Hesslow, Teven Le Scao, Hyung Won Chung, Iz Beltagy, Julien Launay, and Colin Raffel. 2022. What language model architecture and pretraining objective work best for zero-shot generalization? *arXiv preprint arXiv:2204.05832*.
- Jason Wei, Maarten Bosma, Vincent Y Zhao, Kelvin Guu, Adams Wei Yu, Brian Lester, Nan Du, Andrew M Dai, and Quoc V Le. 2021. Finetuned language models are zero-shot learners. *arXiv preprint arXiv:2109.01652*.

- Shaohua Wu, Xudong Zhao, Tong Yu, Rongguo Zhang, Chong Shen, Hongli Liu, Feng Li, Hong Zhu, Jiangang Luo, Liang Xu, et al. 2021. Yuan 1.0: Large-scale pre-trained language model in zero-shot and few-shot learning. *arXiv preprint arXiv:2110.04725*.
- Linting Xue, Noah Constant, Adam Roberts, Mihir Kale, Rami Al-Rfou, Aditya Siddhant, Aditya Barua, and Colin Raffel. 2020. mt5: A massively multilingual pre-trained text-to-text transformer. *arXiv preprint arXiv:2010.11934*.
- Linting Xue, Noah Constant, Adam Roberts, Mihir Kale, Rami Al-Rfou, Aditya Siddhant, Aditya Barua, and Colin Raffel. 2021. mt5: A massively multilingual pre-trained text-to-text transformer. In *NAACL*.
- Elad Ben Zaken, Shauli Ravfogel, and Yoav Goldberg. 2021. Bitfit: Simple parameter-efficient fine-tuning for transformer-based masked language-models. *arXiv preprint arXiv:2106.10199*.
- Rowan Zellers, Ari Holtzman, Yonatan Bisk, Ali Farhadi, and Yejin Choi. 2019. HellaSwag: Can a machine really finish your sentence? In *Proceedings of the 57th Annual Meeting of the Association for Computational Linguistics*, pages 4791–4800, Florence, Italy. Association for Computational Linguistics.
- Aohan Zeng, Xiao Liu, Zhengxiao Du, Zihan Wang, Hanyu Lai, Ming Ding, Zhuoyi Yang, Yifan Xu, Wendi Zheng, Xiao Xia, et al. 2022. Glm-130b: An open bilingual pre-trained model. *arXiv preprint arXiv:2210.02414*.
- Wei Zeng, Xiaozhe Ren, Teng Su, Hui Wang, Yi Liao, Zhiwei Wang, Xin Jiang, ZhenZhang Yang, Kaisheng Wang, Xiaoda Zhang, et al. 2021. Pangu- α : Large-scale autoregressive pretrained chinese language models with auto-parallel computation. *arXiv preprint arXiv:2104.12369*.
- Susan Zhang, Stephen Roller, Naman Goyal, Mikel Artetxe, Moya Chen, Shuohui Chen, Christopher Dewan, Mona Diab, Xian Li, Xi Victoria Lin, et al. 2022. Opt: Open pre-trained transformer language models. *arXiv preprint arXiv:2205.01068*.

A Open artefacts: models, code, and logs

We make public all artefacts produced as part of this work:

- **Models.** All trained models are centralized at <https://huggingface.co/bigscience>;
- **Code.** All code is available at <https://github.com/bigscience-workshop/Megatron-DeepSpeed/tree/main/megatron>;
- **Discussions and logbook.** The notes from the weekly meetings of our working group are made available at https://docs.google.com/document/d/1qbIkhd6bvbOsJOWXL7SfKQ0jey3MWQYQb_SshqHlLII/.

B Multilingual scaling laws

| Language | Proportion [%] | α_c | C_m |
|------------------------|----------------|------------|-------|
| Arabic | 4.6 | 0.057 | 1.16 |
| Catalan | 1.1 | 0.057 | 1.11 |
| Code | 10.8 | 0.054 | 0.94 |
| English | 30.0 | 0.051 | 1.08 |
| Spanish | 10.8 | 0.050 | 1.01 |
| Basque | 0.15 | 0.069 | 1.28 |
| French | 12.9 | 0.047 | 1.06 |
| Indonesian | 1.2 | 0.051 | 1.14 |
| Assamese | 0.01 | 0.051 | 1.31 |
| Bengali | 0.5 | 0.037 | 1.15 |
| Gujarati | 0.04 | 0.051 | 1.30 |
| Hindi | 0.7 | 0.045 | 1.14 |
| Kannada | 0.06 | 0.046 | 1.26 |
| Malayalam | 0.1 | 0.044 | 1.17 |
| Marathi | 0.05 | 0.046 | 1.23 |
| Nepali | 0.07 | 0.055 | 1.25 |
| Odia | 0.04 | 0.044 | 1.25 |
| Punjabi | 0.05 | 0.043 | 1.20 |
| Tamil | 0.2 | 0.030 | 1.14 |
| Telugu | 0.09 | 0.056 | 1.31 |
| Urdu | 0.1 | 0.068 | 1.31 |
| Niger-Congo (family) | 0.03 | 0.039 | 1.22 |
| Portuguese | 4.9 | 0.049 | 1.05 |
| Vietnamese | 2.7 | 0.053 | 1.08 |
| Chinese (simplified) | 16.2 | 0.052 | 1.09 |
| Chinese (traditionnal) | 0.05 | 0.050 | 1.15 |

Table 9: **Best scaling law fit per language.** We fit $\mathcal{L}(C) = C_m C^{-\alpha_c}$ to the runs reported in Figure 3. But for a handful of languages which are poorly represented in the overall mixture (Basque, most of the Indic family, and Niger-Congo languages), scaling mostly different in offset C_m , not in exponent α_c .

C Evaluation details

| | Task | Type | Random baseline |
|--|--|------------------------------------|-----------------|
| ARC (Clark et al., 2018) | Challenge | Natural Language Inference | 25.0 |
| | Easy | | 25.0 |
| GLUE | MRPC (Dolan and Brockett, 2005) | Paraphrase Identification | 50.0 |
| | QQP (Iyer et al., 2017) | Paraphrase Identification | 50.0 |
| HellaSwag (Zellers et al., 2019) | | Sentence Completion | 25.0 |
| LAMBADA (Paperno et al., 2016) | | Sentence Completion | 0.0 |
| LogiQA (Liu et al., 2020) | | Multiple-Choice Question Answering | 25.0 |
| MathQA (Amini et al., 2019) | | Multiple-Choice Question Answering | 20.1 |
| MC-TACO (Ben Zhou and Roth, 2019) | | Multiple-Choice Question Answering | 36.2 |
| OpenBookQA (Mihaylov et al., 2018) | | Multiple-Choice Question Answering | 25.0 |
| PIQA (Bisk et al., 2020) | | Multiple-Choice Question Answering | 50.0 |
| PROST (Aroca-Ouellette et al., 2021) | | Multiple-Choice Question Answering | 25.0 |
| PudMedQA (Jin et al., 2019) | | Multiple-Choice Question Answering | 33.3 |
| QNLI (Rajpurkar et al., 2016; Wang et al., 2019) | | Sentence Completion | 50.0 |
| Race (Lai et al., 2017) | | Closed-Book Question Answering | 25.0 |
| SciQ (Johannes Welbl, 2017) | | Multiple-Choice Question Answering | 25.0 |
| SST (Socher et al., 2013) | | Sentiment | 50.0 |
| SuperGLUE | Boolq (Clark et al., 2019) | Multiple-Choice Question Answering | 50.0 |
| | COPA (Gordon et al., 2012) | Sentence Completion | 50.0 |
| | MultiRC (Khashabi et al., 2018) | Multiple-Choice Question Answering | 5.8 |
| | RTE (Dagan et al., 2005) | Natural Language Inference | 50.0 |
| | WIC (Pilehvar and os'e Camacho-Collados, 2018) | Word Sense Disambiguation | 50.0 |
| | WSC (Levesque et al., 2012) | Word Sense Disambiguation | 50.0 |
| TriviaQA (Joshi et al., 2017) | | Closed-Book Question Answering | 0.0 |
| WebQuestions (Berant et al., 2013) | | Closed-Book Question Answering | 0.0 |
| Winogrande (Sakaguchi et al., 2019) | | Coreference resolution | 50.0 |
| WNLI (Sakaguchi et al., 2019) | | Natural Language Inference | 50.0 |
| EAI harness | | | 33.3 |

Table 10: Evaluation tasks considered in the EAI harness and random baselines.

D Architecture details

| ARCHITECTURE | | | | PARALLELISM | | | | PERFORMANCE | | | |
|--------------------|-------------|--------|-------------------------|-------------|------|--------|----------|-------------|----------------|-------------------------|----------|
| Size [Bparams.] | Hidden dim. | Layers | Attention heads num. | dim. | Data | Tensor | Pipeline | MBS | Memory [GB] | Throughput [s/iter.] | [TFLOPs] |
| 206 | 14,336 | 82 | 128 | 112 | 8 | 4 | 12 | 2 | <u>OOM</u> | | |
| 203 | 13,312 | 94 | 128 | 104 | 8 | 4 | 12 | 2 | 67 | 124,1 | 146,1 |
| 195 | 12,288 | 106 | 128 | 96 | 8 | 4 | 12 | 2 | 67 | 121,4 | 143,7 |
| | | | 96 | 128 | | | | 4 | 79 | 120,3 | 145,0 |
| | | | 128 | 128 | | | | 2 | 65 | 118,8 | 146,9 |
| | | | 64 | 192 | | | | 2 | 67 | 116,5 | 149,8 |
| 184 | 12,288 | 100 | 64 | 192 | 16 | 4 | 6 | 2 | <u>OOM</u> | | |
| | | | | | 8 | 8 | | 1 | <u>OOM</u> | | |
| | | | | | | | | 4 | 72 | 121,0 | 136,2 |
| | | | | | | | 2 | 61 | 140,0 | 117,9 | |
| 178 | 13,312 | 82 | 128 | 104 | 8 | 4 | 12 | 2 | 60 | 108,8 | 145,7 |
| | | | 104 | 128 | | | | 4 | 62 | 123,7 | 128,1 |
| | | | 64 | 208 | | | | 4 | 74 | 104,8 | 151,2 |
| | | | | | | | | 8 | 52 | 111,8 | 141,8 |
| | | | | | | | 2 | 63 | 104,5 | 151,7 | |
| 176 | 14,336 | 70 | 128 | 112 | 8 | 4 | 12 | 2 | 60 | 105,9 | 148,1 |
| | | | 112 | 128 | | | | 4 | 59 | 104,5 | 150,1 |
| | | | 64 | 224 | | | | 4 | 73 | 102,3 | 153,3 |
| | | | | | | | | 4 | 59 | 102,0 | 153,7 |
| | | | | | | | 2 | 40 | 121,6 | 128,9 | |

Table 11: **Throughput and memory usage of considered models sizes.** Note that pipeline parallelism here considers equal "slots" for embeddings and Transformer layers. This is important to optimize pipeline use, as our multilingual embeddings are quite large (250k).

E All Results

| Ablation | Dataset | Embedding | Activation | Embedding Norm | Parameters | 112GT | 250GT | 300GT |
|-----------------|----------|-----------|------------|----------------|------------|-------|-------|-------|
| Embeddings | OSCAR | Learned | GELU | No | 1.3B | 41.71 | | |
| Embeddings | OSCAR | None | GELU | No | 1.3B | 41.23 | | |
| Embeddings | OSCAR | Rotary | GELU | No | 1.3B | 41.46 | | |
| Embeddings | OSCAR | ALiBi | GELU | No | 1.3B | 43.70 | | |
| Dataset | The Pile | Learned | GELU | No | 1.3B | 42.79 | 43.12 | 43.46 |
| Dataset | C4 | Learned | GELU | No | 1.3B | 42.77 | | |
| Dataset | OSCAR | Learned | GELU | No | 1.3B | 42.79 | | |
| Activation | The Pile | Learned | GELU | No | 1.3B | 42.79 | | |
| Activation | The Pile | Learned | SwiGLU | No | 1.3B | 42.95 | | |
| Embedding Norm | The Pile | Learned | GELU | No | 1.3B | 42.79 | 43.12 | 43.46 |
| Embedding Norm | The Pile | Learned | GELU | Yes | 1.3B | | | 42.24 |
| Multilinguality | OSCAR-ML | Learned | GELU | No | 1.3B | 38.55 | | |
| Multilinguality | OSCAR | Learned | GELU | No | 1.3B | 41.72 | | |
| Scale | OSCAR | Learned | GELU | No | 1.3B | 41.72 | | |
| Scale | OSCAR | Learned | GELU | No | 13B | | | 47.09 |

Table 12: **Summary of all results obtained in this study.** The final three columns indicate the average EAI Harness results at across different billion tokens trained. Some rows are duplicated for ease of reading.

| Public Name | Dataset | Embeddings | Activation | Embedding Norm | Parameters in billion | Tokens trained in billion | OpenAI: babbage | | OpenAI: curie | | gpt-neo 1.3B | | C4 | | OSCAR Learned GELU | | The Pile Learned GELU | | The Pile Learned GELU | | OSCAR Learned GELU | | The Pile Learned SwiGelu | | OSCAR Rotary No | | OSCAR ALiBi GELU | | OSCAR None GELU | | OSCAR-ML Learned GELU | | | |
|---------------|---------------|---------------|---------------|----------------|-----------------------|---------------------------|-----------------|-------|---------------|-------|--------------|-------|-------|-------|--------------------|-------|-----------------------|-------|-----------------------|-------|--------------------|-------|--------------------------|-------|-----------------|-------|------------------|-------|-----------------|-------|-----------------------|-------|-------|-------|
| | | | | | | | 1.3 | 300 | 6.7 | 300 | 1.3 | 300 | 1.3 | 300 | 1.3 | 300 | 1.3 | 300 | 1.3 | 300 | 1.3 | 300 | 1.3 | 300 | 1.3 | 300 | 1.3 | 300 | 1.3 | 112 | 1.3 | 112 | 1.3 | 112 |
| task | | | | | | | 1.3 | 300 | 6.7 | 300 | 1.3 | 300 | 1.3 | 300 | 1.3 | 300 | 1.3 | 300 | 1.3 | 300 | 1.3 | 300 | 1.3 | 112 | 1.3 | 112 | 1.3 | 112 | 1.3 | 112 | | | | |
| arc_challenge | arc_challenge | arc_challenge | arc_challenge | arc_challenge | arc_challenge | arc_challenge | 0.276 | 0.334 | 0.334 | 0.249 | 0.243 | 0.231 | 0.258 | 0.264 | 0.260 | 0.242 | 0.242 | 0.250 | 0.250 | 0.250 | 0.250 | 0.322 | 0.247 | 0.236 | 0.252 | 0.249 | 0.249 | 0.249 | 0.212 | 0.212 | | | | |
| arc_challenge | arc_challenge | arc_challenge | arc_challenge | arc_challenge | arc_challenge | arc_challenge | 0.295 | 0.375 | 0.375 | 0.261 | 0.274 | 0.259 | 0.275 | 0.277 | 0.260 | 0.277 | 0.286 | 0.290 | 0.290 | 0.290 | 0.342 | 0.268 | 0.270 | 0.276 | 0.260 | 0.260 | 0.260 | 0.243 | 0.243 | | | | | |
| arc_easy | arc_easy | arc_easy | arc_easy | arc_easy | arc_easy | arc_easy | 0.597 | 0.685 | 0.685 | 0.560 | 0.561 | 0.562 | 0.556 | 0.569 | 0.601 | 0.568 | 0.561 | 0.582 | 0.582 | 0.582 | 0.681 | 0.557 | 0.554 | 0.575 | 0.537 | 0.537 | 0.537 | 0.484 | 0.484 | | | | | |
| arc_easy | arc_easy | arc_easy | arc_easy | arc_easy | arc_easy | arc_easy | 0.555 | 0.633 | 0.633 | 0.478 | 0.503 | 0.502 | 0.478 | 0.518 | 0.518 | 0.516 | 0.528 | 0.515 | 0.515 | 0.600 | 0.502 | 0.476 | 0.491 | 0.461 | 0.461 | 0.461 | 0.434 | 0.434 | | | | | | |
| boolq | boolq | boolq | boolq | boolq | boolq | boolq | 0.629 | 0.666 | 0.666 | 0.566 | 0.546 | 0.620 | 0.520 | 0.551 | 0.606 | 0.558 | 0.558 | 0.566 | 0.566 | 0.587 | 0.540 | 0.584 | 0.563 | 0.526 | 0.526 | 0.526 | 0.597 | 0.597 | | | | | | |
| copa | copa | copa | copa | copa | copa | copa | 0.810 | 0.850 | 0.850 | 0.720 | 0.700 | 0.690 | 0.710 | 0.710 | 0.730 | 0.690 | 0.690 | 0.690 | 0.880 | 0.660 | 0.690 | 0.880 | 0.660 | 0.690 | 0.710 | 0.690 | 0.690 | 0.710 | 0.710 | | | | | |
| hellaswag | hellaswag | hellaswag | hellaswag | hellaswag | hellaswag | hellaswag | 0.429 | 0.504 | 0.504 | 0.404 | 0.422 | 0.387 | 0.374 | 0.385 | 0.405 | 0.378 | 0.380 | 0.380 | 0.410 | 0.542 | 0.379 | 0.410 | 0.422 | 0.395 | 0.340 | 0.340 | 0.340 | 0.340 | 0.340 | | | | | |
| hellaswag | hellaswag | hellaswag | hellaswag | hellaswag | hellaswag | hellaswag | 0.545 | 0.664 | 0.664 | 0.515 | 0.551 | 0.489 | 0.464 | 0.486 | 0.521 | 0.477 | 0.476 | 0.476 | 0.716 | 0.475 | 0.524 | 0.496 | 0.424 | 0.424 | 0.424 | 0.424 | 0.424 | 0.424 | 0.424 | | | | | |
| lambada | lambada | lambada | lambada | lambada | lambada | lambada | 0.625 | 0.694 | 0.694 | 0.481 | 0.469 | 0.572 | 0.569 | 0.575 | 0.609 | 0.581 | 0.580 | 0.634 | 0.496 | 0.501 | 0.496 | 0.501 | 0.454 | 0.454 | 0.454 | 0.454 | 0.454 | 0.454 | 0.454 | | | | | |
| logiqa | logiqa | logiqa | logiqa | logiqa | logiqa | logiqa | 0.201 | 0.215 | 0.215 | 0.237 | 0.206 | 0.197 | 0.210 | 0.218 | 0.203 | 0.217 | 0.223 | 0.223 | 0.232 | 0.215 | 0.218 | 0.232 | 0.215 | 0.237 | 0.237 | 0.237 | 0.237 | 0.237 | 0.237 | 0.237 | | | | |
| logiqa | logiqa | logiqa | logiqa | logiqa | logiqa | logiqa | 0.269 | 0.292 | 0.292 | 0.270 | 0.267 | 0.273 | 0.275 | 0.286 | 0.269 | 0.281 | 0.281 | 0.280 | 0.275 | 0.272 | 0.254 | 0.272 | 0.272 | 0.293 | 0.293 | 0.293 | 0.293 | 0.293 | 0.293 | 0.293 | 0.293 | | | |
| mathqa | mathqa | mathqa | mathqa | mathqa | mathqa | mathqa | 0.244 | 0.251 | 0.251 | 0.222 | 0.233 | 0.241 | 0.249 | 0.248 | 0.263 | 0.246 | 0.248 | 0.245 | 0.245 | 0.238 | 0.245 | 0.234 | 0.237 | 0.215 | 0.215 | 0.215 | 0.215 | 0.215 | 0.215 | 0.215 | 0.215 | | | |
| mathqa | mathqa | mathqa | mathqa | mathqa | mathqa | mathqa | 0.242 | 0.247 | 0.247 | 0.228 | 0.228 | 0.237 | 0.242 | 0.242 | 0.259 | 0.242 | 0.242 | 0.242 | 0.242 | 0.235 | 0.234 | 0.229 | 0.222 | 0.221 | 0.222 | 0.222 | 0.222 | 0.222 | 0.222 | 0.222 | 0.222 | | | |
| mc_taco | mc_taco | mc_taco | mc_taco | mc_taco | mc_taco | mc_taco | 0.458 | 0.484 | 0.484 | 0.293 | 0.361 | 0.493 | 0.485 | 0.488 | 0.494 | 0.487 | 0.489 | 0.489 | 0.497 | 0.493 | 0.461 | 0.437 | 0.387 | 0.387 | 0.387 | 0.387 | 0.387 | 0.387 | 0.387 | 0.387 | 0.387 | | | |
| mrpc | mrpc | mrpc | mrpc | mrpc | mrpc | mrpc | 0.578 | 0.684 | 0.684 | 0.588 | 0.684 | 0.684 | 0.684 | 0.684 | 0.684 | 0.679 | 0.684 | 0.679 | 0.677 | 0.684 | 0.684 | 0.679 | 0.684 | 0.679 | 0.684 | 0.679 | 0.684 | 0.679 | 0.684 | 0.679 | 0.684 | | | |
| mrpc | mrpc | mrpc | mrpc | mrpc | mrpc | mrpc | 0.718 | 0.812 | 0.812 | 0.702 | 0.812 | 0.812 | 0.812 | 0.812 | 0.812 | 0.808 | 0.808 | 0.809 | 0.809 | 0.806 | 0.812 | 0.812 | 0.812 | 0.808 | 0.808 | 0.808 | 0.808 | 0.808 | 0.808 | 0.808 | 0.808 | 0.808 | | |
| multirc | multirc | multirc | multirc | multirc | multirc | multirc | 0.018 | 0.015 | 0.015 | 0.026 | 0.018 | 0.018 | 0.023 | 0.024 | 0.023 | 0.025 | 0.008 | 0.008 | 0.018 | 0.018 | 0.018 | 0.018 | 0.018 | 0.016 | 0.016 | 0.016 | 0.016 | 0.016 | 0.016 | 0.016 | 0.016 | 0.016 | | |
| openbookqa | openbookqa | openbookqa | openbookqa | openbookqa | openbookqa | openbookqa | 0.224 | 0.290 | 0.290 | 0.200 | 0.220 | 0.216 | 0.190 | 0.196 | 0.222 | 0.194 | 0.208 | 0.208 | 0.294 | 0.214 | 0.212 | 0.224 | 0.210 | 0.210 | 0.210 | 0.210 | 0.210 | 0.210 | 0.210 | 0.210 | 0.210 | 0.210 | | |
| openbookqa | openbookqa | openbookqa | openbookqa | openbookqa | openbookqa | openbookqa | 0.336 | 0.386 | 0.386 | 0.328 | 0.336 | 0.336 | 0.316 | 0.314 | 0.334 | 0.302 | 0.312 | 0.312 | 0.412 | 0.320 | 0.344 | 0.340 | 0.332 | 0.332 | 0.332 | 0.332 | 0.332 | 0.332 | 0.332 | 0.332 | 0.332 | 0.332 | | |
| piqa | piqa | piqa | piqa | piqa | piqa | piqa | 0.745 | 0.763 | 0.763 | 0.716 | 0.732 | 0.711 | 0.693 | 0.704 | 0.716 | 0.698 | 0.706 | 0.706 | 0.777 | 0.693 | 0.720 | 0.729 | 0.711 | 0.682 | 0.682 | 0.682 | 0.682 | 0.682 | 0.682 | 0.682 | 0.682 | 0.682 | 0.682 | |
| piqa | piqa | piqa | piqa | piqa | piqa | piqa | 0.746 | 0.772 | 0.772 | 0.721 | 0.730 | 0.711 | 0.705 | 0.705 | 0.717 | 0.698 | 0.701 | 0.701 | 0.788 | 0.689 | 0.721 | 0.731 | 0.711 | 0.682 | 0.682 | 0.682 | 0.682 | 0.682 | 0.682 | 0.682 | 0.682 | 0.682 | 0.682 | |
| prost | prost | prost | prost | prost | prost | prost | 0.270 | 0.288 | 0.288 | 0.237 | 0.243 | 0.238 | 0.249 | 0.229 | 0.204 | 0.219 | 0.226 | 0.226 | 0.281 | 0.244 | 0.287 | 0.280 | 0.240 | 0.240 | 0.240 | 0.240 | 0.240 | 0.240 | 0.240 | 0.240 | 0.240 | 0.240 | 0.240 | |
| prost | prost | prost | prost | prost | prost | prost | 0.260 | 0.295 | 0.295 | 0.303 | 0.293 | 0.308 | 0.268 | 0.271 | 0.268 | 0.292 | 0.268 | 0.268 | 0.283 | 0.276 | 0.296 | 0.332 | 0.300 | 0.300 | 0.300 | 0.300 | 0.300 | 0.300 | 0.300 | 0.300 | 0.300 | 0.300 | 0.300 | |
| pubmedqa | pubmedqa | pubmedqa | pubmedqa | pubmedqa | pubmedqa | pubmedqa | 0.611 | 0.622 | 0.622 | 0.438 | 0.573 | 0.544 | 0.563 | 0.589 | 0.662 | 0.612 | 0.612 | 0.612 | 0.615 | 0.589 | 0.507 | 0.514 | 0.486 | 0.486 | 0.486 | 0.486 | 0.486 | 0.486 | 0.486 | 0.486 | 0.486 | 0.486 | 0.486 | |
| qnli | qnli | qnli | qnli | qnli | qnli | qnli | 0.512 | 0.529 | 0.529 | 0.507 | 0.476 | 0.499 | 0.505 | 0.506 | 0.505 | 0.499 | 0.499 | 0.499 | 0.517 | 0.498 | 0.493 | 0.481 | 0.493 | 0.493 | 0.493 | 0.493 | 0.493 | 0.493 | 0.493 | 0.493 | 0.493 | 0.493 | 0.493 | |
| qqp | qqp | qqp | qqp | qqp | qqp | qqp | 0.372 | 0.441 | 0.441 | 0.384 | 0.396 | 0.382 | 0.381 | 0.370 | 0.375 | 0.371 | 0.369 | 0.368 | 0.368 | 0.370 | 0.370 | 0.370 | 0.370 | 0.370 | 0.370 | 0.370 | 0.370 | 0.370 | 0.370 | 0.370 | 0.370 | 0.370 | 0.370 | |
| qqp | qqp | qqp | qqp | qqp | qqp | qqp | 0.534 | 0.515 | 0.515 | 0.519 | 0.530 | 0.522 | 0.534 | 0.537 | 0.537 | 0.538 | 0.538 | 0.538 | 0.533 | 0.495 | 0.539 | 0.475 | 0.537 | 0.505 | 0.505 | 0.505 | 0.505 | 0.505 | 0.505 | 0.505 | 0.505 | 0.505 | 0.505 | |
| race | race | race | race | race | race | race | 0.356 | 0.386 | 0.386 | 0.323 | 0.330 | 0.341 | 0.334 | 0.329 | 0.344 | 0.321 | 0.321 | 0.323 | 0.374 | 0.337 | 0.317 | 0.344 | 0.332 | 0.332 | 0.332 | 0.332 | 0.332 | 0.332 | 0.332 | 0.332 | 0.332 | 0.332 | 0.332 | |
| race | race | race | race | race | race | race | 0.585 | 0.552 | 0.552 | 0.534 | 0.502 | 0.603 | 0.563 | 0.549 | 0.578 | 0.563 | 0.549 | 0.549 | 0.524 | 0.527 | 0.545 | 0.524 | 0.527 | 0.505 | 0.505 | 0.505 | 0.505 | 0.505 | 0.505 | 0.505 | 0.505 | 0.505 | 0.505 | 0.505 |
| sciq | sciq | sciq | sciq | sciq | sciq | sciq | 0.867 | 0.919 | 0.919 | 0.810 | 0.825 | 0.860 | 0.838 | 0.853 | 0.868 | 0.860 | 0.860 | 0.868 | 0.895 | 0.849 | 0.818 | 0.828 | 0.816 | 0.816 | 0.816 | 0.816 | 0.816 | 0.816 | 0.816 | 0.816 | 0.816 | 0.816 | 0.816 | |
| sciq | sciq | sciq | sciq | sciq | sciq | sciq | 0.809 | 0.896 | 0.896 | 0.770 | 0.747 | 0.770 | 0.755 | 0.762 | 0.792 | 0.791 | 0.803 | 0.815 | 0.770 | 0.718 | 0.702 | 0.698 | 0.698 | 0.698 | 0.698 | 0.698 | 0.698 | 0.698 | 0.698 | 0.698 | 0.698 | 0.698 | 0.698 | |
| sst | sst | sst | sst | sst | sst | sst | 0.732 | 0.666 | 0.666 | 0.666 | 0.676 | 0.656 | 0.670 | 0.671 | 0.501 | 0.528 | 0.710 | 0.514 | 0.514 | 0.514 | 0.514 | 0.514 | 0.514 | 0.514 | 0.514 | 0.514 | 0.514 | 0.514 | 0.514 | 0.514 | 0.514 | 0.514 | 0.514 | |
| triviaqa | triviaqa | triviaqa | triviaqa | triviaqa | triviaqa | triviaqa | 0.115 | 0.195 | 0.195 | 0.025 | 0.027 | 0.052 | 0.056 | 0.065 | 0.058 | 0.047 | 0.049 | 0.133 | 0.050 | 0.031 | 0.039 | 0.028 | 0.028 | 0.028 | 0.028 | 0.028 | 0.028 | 0.028 | 0.028 | 0.028 | 0.028 | 0.028 | 0.028 | |
| triviaqa | triviaqa | triviaqa | triviaqa | triviaqa | triviaqa | triviaqa | 0.048 | 0.065 | 0.065 | 0.004 | 0.012 | 0.017 | 0.023 | 0.026 | 0.023 | 0.020 | | | | | | | | | | | | | | | | | | |