

Improving distant supervision using inference learning

Roland Roller¹, Eneko Agirre², Aitor Soroa² and Mark Stevenson¹

¹ Department of Computer Science, University of Sheffield
roland.roller, mark.stevenson@sheffield.ac.uk

² IXA NLP group, University of the Basque Country
e.agirre, a.soroa@ehu.eus

Abstract

Distant supervision is a widely applied approach to automatic training of relation extraction systems and has the advantage that it can generate large amounts of labelled data with minimal effort. However, this data may contain errors and consequently systems trained using distant supervision tend not to perform as well as those based on manually labelled data. This work proposes a novel method for detecting potential false negative training examples using a knowledge inference method. Results show that our approach improves the performance of relation extraction systems trained using distantly supervised data.

1 Introduction

Distantly supervised relation extraction relies on automatically labelled data generated using information from a knowledge base. A sentence is annotated as a positive example if it contains a pair of entities that are related in the knowledge base. Negative training data is often generated using a closed world assumption: pairs of entities not listed in the knowledge base are assumed to be unrelated and sentences containing them considered to be negative training examples. However this assumption is violated when the knowledge base is incomplete which can lead to sentences containing instances of relations being wrongly annotated as negative examples.

We propose a method to improve the quality of distantly supervised data by identifying possible wrongly annotated negative instances. Our proposed method includes a version of the Path Ranking Algorithm (PRA) (Lao and Cohen, 2010; Lao et al., 2011) which infers relation paths by combining random walks through a knowledge base.

We use this knowledge inference to detect possible false negatives (or at least entity pairs closely connected to a target relation) in automatically labelled training data and show that their removal can improve relation extraction performance.

2 Related Work

Distant supervision is widely used to train relation extraction systems with Freebase and Wikipedia commonly being used as knowledge bases, e.g. (Mintz et al., 2009; Riedel et al., 2010; Krause et al., 2012; Zhang et al., 2013; Min et al., 2013; Ritter et al., 2013). The main advantage is its ability to automatically generate large amounts of training data automatically. On the other hand, this automatically labelled data is noisy and usually generates lower performance than approaches trained using manually labelled data. A range of filtering approaches have been applied to address this problem including multi-class SVM (Nguyen and Moschitti, 2011) and Multi-Instance learning methods (Riedel et al., 2010; Surdeanu et al., 2012). These approaches take into account the fact that entities might occur in different relations at the same time and may not necessarily express the target relation. Other approaches focus directly on the noise in the data. For instance Takamatsu et al. (2012) use a generative model to predict incorrect data while Intxaurrondo et al. (2013) use a range of heuristics including PMI to remove noise. Augenstein et al. (2014) apply techniques to detect highly ambiguous entity pairs and discard them from their labelled training set.

This work proposes a novel approach to the problem by applying an inference learning method to identify potential false negatives in distantly labelled data. Our method makes use of a modified version of PRA to learn relation paths from a knowledge base and uses this information to identify false negatives.

3 Data and Methods

We chose to apply our approach to relation extraction tasks from the biomedical domain since this has proved to be an important problem within these documents (Jensen et al., 2006; Hahn et al., 2012; Cohen and Hunter, 2013; Roller and Stevenson, 2014). In addition, the first application of distant supervision was to biomedical journal articles (Craven and Kumlien, 1999). In addition, the most widely used knowledge source in this domain, the UMLS Metathesaurus (Bodenreider, 2004), is an ideal resource to apply inference learning given its rich structure.

We develop classifiers to identify relations found in two subsets of UMLS: the National Drug File-Reference Terminology (ND-FRT) and the National Cancer Institute Thesaurus (NCI). A corpus of approximately 1,000,000 publications is used to create the distantly supervised training data. The corpus contains abstracts published between 1990 and 2001 annotated with UMLS concepts using MetaMap (Aronson and Lang, 2010).

3.1 Distantly labelled data

Distant supervision is carried out for a target UMLS relation by identifying instance pairs and using them to create a set of positive instance pairs. Any pairs which also occur as an instance pair of another UMLS relation are removed from this set. A set of negative instance pairs is then created by forming new combinations that do not occur within the positive instance pairs. Sentences containing a positive or negative instance pair are then extracted to generate positive and negative training examples for the relation. These candidate sentences are then stemmed (Porter, 1997) and PoS tagged (Charniak and Johnson, 2005).

The sets of positive and negative training examples are then filtered to remove sentences that meet any of the following criteria: contain the same positive pair more than once; contain both a positive and negative pair; more than 5 words between the two elements of the instance pair; contain very common instance pairs.

3.2 PRA-Reduction

PRA (Lao and Cohen, 2010; Lao et al., 2011) is an algorithm that infers new relation instances from knowledge bases. By considering a knowledge base as a graph, where nodes are connected through typed relations, it performs random walks

over it and finds bounded-length relation paths that connect graph nodes. These paths are used as features in a logistic regression model, which is meant to predict new relations in the graph. Although initially conceived as an algorithm to discover new links in the knowledge base, PRA can also be used to learn relevant relation paths for any given relation. For instance, if x and y are related via *sibling* relation, the model trained by PRA would learn that the relation path $parent(x,a) \wedge \underline{parent}(a,y)$ ¹ is highly relevant, as siblings share the same parents.

Knowledge graphs were extracted from the ND-FRT and NCI vocabularies generating approximately 200,000 related instance pairs for ND-FRT and 400,000 for NCI. PRA is then run on both graphs in order to learn paths for each target relation. Table 1 shows examples of the paths PRA generated for the relation *biological-process-involves-gene-product* together with their weights. We only make use of relation paths with positive weights generated by PRA.

path	weight
$gene-encodes-gene-product(x,a) \wedge \underline{gene-plays-role-in-process}(a,y)$	10.53
$\underline{isa}(x,a) \wedge biological-process-involves-gene-product(a,y)$	6.17
$isa(x,a) \wedge biological-process-involves-gene-product(a,y)$	2.80
$gene-encodes-gene-product(x,a) \wedge \underline{gene-plays-role-in-process}(a,b) \wedge isa(b,y)$	-0.06

Table 1: Example PRA-induced paths and weights for the NCI relation *biological-process-involves-gene-product*.

The paths induced by PRA are used to identify potential false negatives in the negative training examples (Section 3.1). Each negative training example is examined to check whether the entity pair is related in UMLS by following any of the relation paths extracted by PRA for the relevant target relation. Examples containing related entity pairs are assumed to be false negatives, since the relation can be inferred from the knowledge base, and removed from the set of negatives training examples. For instance, using the path in the top row of Table 1, sentences containing the entities x and y would be removed if the path $gene-encodes-gene-product(x,a) \wedge \underline{gene-plays-role-in-process}(a,y)$ could be identified within UMLS.

¹An underline (' $\underline{\quad}$ ') prefix represents the inverse of a relation while \wedge represents path composition.

3.3 Evaluation

Relation Extraction system: The MultiR system (Hoffmann et al., 2010) with features described by Surdeanu et al. (2011) was used for the experiments.

Datasets: Three datasets were created to train MultiR and evaluate performance. The first (**Unfiltered**) uses the data obtained using distant supervision (Section 3.1) without removing any examples identified by PRA. The overall ratio of positive to negative sentences in this dataset was 1:5.1. However, this changes to 1:2.3 after removing examples identified by PRA. Consequently the bias in the distantly supervised data was adjusted to 1:2 to increase comparability across configurations. Reducing bias was also found to increase relation extraction performance, producing a strong baseline. The **PRA-reduced** dataset is created by applying PRA reduction (Section 3.2) to the *Unfiltered* dataset to remove a portion of the negative training examples. Removing these examples produces a dataset that is smaller than *Unfiltered* and with a different bias. Changing the bias of the training data can influence the classification results. Consequently the **Random-reduced** dataset was created by removing randomly selected negative examples from *Unfiltered* to produce a dataset with the same size and bias as *PRA-reduced*. The *Random-reduced* dataset is used to show that randomly removing negative instances leads to lower results than removing those suggested by PRA.

Evaluation: Two approaches were used to evaluate performance.

The **Held-out** datasets consist of the *Unfiltered*, *PRA-reduced* and *Random-reduced* data sets. The set of entity pairs obtained from the knowledge base is split into four parts and a process similar to 4-fold cross validation applied. In each fold the automatically labelled sentences obtained from the pairs in 3 of the quarters are used as training data and sentences obtained from the remaining quarter used for testing.

The **Manually labelled** dataset contains 400 examples of the relation *may-prevent* and 400 of *may-treat* which were manually labelled by two annotators who were medical experts. Both relations are taken from the ND-FRT subset of UMLS. Each annotator was asked to label every sentence and then re-examine cases where there was disagreement. This process lead to inter-annotator agreement of 95.5% for *may-treat* and 97.3% for

may-prevent. The annotated data set is publicly available². Any sentences in the training data containing an entity pair that occurs within the manually labelled dataset are removed. Although this dataset is smaller than the held-out dataset, its annotations are more reliable and it is therefore likely to be a more accurate indicator of performance accuracy. This dataset is more balanced than the held-out data with a ratio of 1:1.3 for *may-treat* and 1:1.8 for *may-prevent*.

Evaluation metric: Our experiments use entity level evaluation since this is the most appropriate approach to determine suitability for database population. Precision and recall are computed based on the proportion of entity pairs identified. For the held-out data the set of correct entity pairs are those which occur in sentences labeled as positive examples of the relation and which are also listed as being related in UMLS. For the manually labelled data it is simply the set of entity pairs that occur in positive examples of the relation.

4 Results

4.1 Held-out data

Table 2 shows the results obtained using the held-out data. Overall results, averaged across all relations with maximum recall, are shown in the top portion of the table and indicate that applying PRA improves performance. Although the highest precision is obtained using the *Unfiltered* classifier, the *PRA-reduced* classifier leads to the best recall and F1. Performance of the *Random-reduced* classifier indicates that the improvement is not simply due to a change in the bias in the data but that the examples it contains lead to an improved model.

The lower part of Table 2 shows results for each relation. The *PRA-reduced* classifier produces the best results for the majority of relations and always increases recall compared to *Unfiltered*.

It is perhaps surprising that removing false negatives from the training data leads to an increase in recall, rather than precision. False negatives cause the classifier to generate an overly restrictive model of the relation and to predict positive examples of a relation as negative. Removing them leads to a less constrained model and higher recall.

There are two relations where there is also an increase in precision (*contraindicating-class-of* and *mechanism-of-action-of*) and these are also the ones for which the fewest training examples are

²<https://sites.google.com/site/umlscorepus/home>

	Unfiltered			Random-reduced			PRA-reduced		
	Prec.	Rec.	F1	Prec.	Rec.	F1	Prec.	Rec.	F1
Overall	62.30	51.82	56.58	44.49	74.26	55.64	56.85	77.10	65.44
NCI relations									
biological_process_involves_gene_product	89.61	43.18	57.86	65.67	78.79	71.38	70.63	84.85	76.97
disease_has_normal_cell_origin	60.20	83.86	69.95	43.2	95.21	58.85	42.80	91.88	57.91
gene_product_has_associated_anatomy	41.65	64.04	49.96	29.22	74.63	41.81	37.94	65.28	47.82
gene_product_has_biochemical_function	86.43	72.00	78.33	60.66	91.57	72.90	70.58	95.80	81.17
process_involves_gene	78.92	50.71	61.54	51.38	80.64	62.73	68.16	87.34	76.47
ND-FRT relations									
contraindicating_class_of	40.00	20.83	26.14	28.48	72.50	39.58	41.30	82.50	54.33
may_prevent	27.48	14.69	18.87	20.61	44.79	27.94	38.11	35.63	36.64
may_treat	48.66	39.63	43.14	39.57	50.00	43.84	50.88	57.93	54.11
mechanism_of_action_of	47.15	40.63	43.12	40.25	59.38	47.62	52.85	59.38	55.82

Table 2: Evaluation using held-out data

relation	Unfiltered			Random-reduced			PRA-reduced		
	Prec.	Rec.	F1	Prec.	Rec.	F1	Prec.	Rec.	F1
may_prevent	54.17	21.67	30.95	53.57	25.00	34.09	39.66	38.33	38.98
may_treat	40.00	47.48	43.42	43.21	50.36	46.51	41.05	67.63	51.09

Table 3: Evaluation using manually labelled data

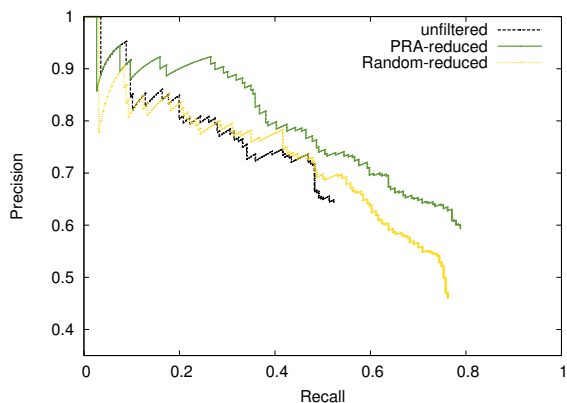


Figure 1: Precision/Recall Curve for Held-out data

available. The classifier has access to such a limited amount of data for these relations that removing the false negatives identified by PRA allows it to learn a more accurate model.

Figure 1 presents a precision/recall curve computed using MultiR’s output probabilities. Results for the *PRA-reduced* and the *Random-reduced* classifiers show that reducing the amount of negative training data increases recall. However, using *PRA-reduced* generally leads to higher precision, indicating that PRA is able to identify suitable instances for removal from the training set. The *Unfiltered* classifier produces good results but precision and recall are lower than *PRA-reduced*.

4.2 Manually labelled

Table 3 shows results of evaluation on the more reliable manually labelled data set. The best over-

all performance is once again obtained using the *PRA-reduced* classifier. There is an increase in recall for both relations and a slight increase in precision for *may_treat*. Performance of the *Random-reduced* classifier also improves due to an increasing recall but remains below *PRA-reduced*. Performance of the *Random-reduced* classifier is also better than *Unfiltered*, with the overall improvement largely resulting from increased recall, but below *PRA-reduced*. These results confirm that removing examples identified by PRA improves the quality of training data.

Further analysis indicated that the *PRA-reduced* classifier produces the fewest false negatives in its predictions on the manually annotated dataset. It incorrectly labels 82 entity pairs (45 *may_treat*, 37 *may_prevent*) as negative while *Unfiltered* predicts 120 (73, 47) and *Random-reduced* 114 (69, 45). This supports our initial hypothesis that removing potential false negatives from training data improves classifier predictions.

5 Conclusions and Future Work

This paper proposes a novel approach to identifying incorrectly labelled instances generated using distant supervision. Our method applies an inference learning method to detect and discard possible false negatives from the training data. We show that our method improves performance for a range of relations in the biomedical domain by making use of information from UMLS.

In future we would like to explore alternative

methods for selecting PRA relation paths to identify false negatives. Furthermore we would like to examine the PRA-reduced data in more detail. We would like to find which kind of entity pairs are detected by our proposed method and whether the reduced data can also be used to extend the positive training data. We would also like to apply the approach to other domains and alternative knowledge bases. Finally it would be interesting to compare our approach to other state of the art relation extraction systems for distant supervision or biased-SVM approaches such as Liu et al. (2003).

Acknowledgements

The authors are grateful to the Engineering and Physical Sciences Research Council for supporting the work described in this paper (EP/J008427/1).

References

- A. Aronson and F. Lang. 2010. An overview of MetaMap: historical perspective and recent advances. *Journal of the American Medical Association*, 17(3):229–236.
- Isabelle Augenstein, Diana Maynard, and Fabio Ciravegna. 2014. Relation extraction from the web using distant supervision. In *Proceedings of the 19th International Conference on Knowledge Engineering and Knowledge Management (EKAW 2014)*, Linköping, Sweden, November.
- Olivier Bodenreider. 2004. The unified medical language system (umls): integrating biomedical terminology. *Nucleic acids research*, 32(suppl 1):D267–D270.
- Eugene Charniak and Mark Johnson. 2005. Coarse-to-fine n-best parsing and maxent discriminative reranking. In *Proceedings of the 43rd Annual Meeting on Association for Computational Linguistics*, ACL '05, pages 173–180, Stroudsburg, PA, USA. Association for Computational Linguistics.
- K Bretonnel Cohen and Lawrence E Hunter. 2013. Text mining for translational bioinformatics. *PLoS computational biology*, 9(4):e1003044.
- Mark Craven and Johan Kumlien. 1999. Constructing biological knowledge bases by extracting information from text sources. In *In Proceedings of the Seventh International Conference on Intelligent Systems for Molecular Biology (ISMB)*, pages 77–86. AAAI Press.
- Udo Hahn, K Bretonnel Cohen, Yael Garten, and Nigam H Shah. 2012. Mining the pharmacogenomics literature: a survey of the state of the art. *Briefings in bioinformatics*, 13(4):460–494.
- Raphael Hoffmann, Congle Zhang, and Daniel S. Weld. 2010. Learning 5000 relational extractors. In *Proceedings of the 48th Annual Meeting of the Association for Computational Linguistics*, ACL '10, pages 286–295, Stroudsburg, PA, USA. Association for Computational Linguistics.
- Ander Intxaurreondo, Mihai Surdeanu, Oier Lopez de Lacalle, and Eneko Agirre. 2013. Removing noisy mentions for distant supervision. *Procesamiento del Lenguaje Natural*, 51:41–48.
- Lars Juhl Jensen, Jasmin Saric, and Peer Bork. 2006. Literature mining for the biologist: from information retrieval to biological discovery. *Nature reviews genetics*, 7(2):119–129.
- Sebastian Krause, Hong Li, Hans Uszkoreit, and Feiyu Xu. 2012. Large-scale learning of relation-extraction rules with distant supervision from the web. In *Proceedings of the 11th International Conference on The Semantic Web - Volume Part I, ISWC'12*, pages 263–278, Berlin, Heidelberg. Springer-Verlag.
- Ni Lao and William W. Cohen. 2010. Relational retrieval using a combination of path-constrained random walks. *Mach. Learn.*, 81(1):53–67, October.
- Ni Lao, Tom Mitchell, and William W. Cohen. 2011. Random walk inference and learning in a large scale knowledge base. In *Proceedings of the 2011 Conference on Empirical Methods in Natural Language Processing*, pages 529–539, Edinburgh, Scotland, UK., July. Association for Computational Linguistics.
- Bing Liu, Yang Dai, Xiaoli Li, Wee Sun Lee, and Philip S. Yu. 2003. Building text classifiers using positive and unlabeled examples. In *Intl. Conf. on Data Mining*, pages 179–188.
- Bonan Min, Ralph Grishman, Li Wan, Chang Wang, and David Gondek. 2013. Distant supervision for relation extraction with an incomplete knowledge base. In *Proceedings of the 2013 Conference of the North American Chapter of the Association for Computational Linguistics: Human Language Technologies*, pages 777–782, Atlanta, Georgia, June. Association for Computational Linguistics.
- Mike Mintz, Steven Bills, Rion Snow, and Dan Jurafsky. 2009. Distant supervision for relation extraction without labeled data. In *Proceedings of the Joint Conference of the 47th Annual Meeting of the ACL and the 4th International Joint Conference on Natural Language Processing of the AFNLP: Volume 2 - Volume 2*, ACL '09, pages 1003–1011, Stroudsburg, PA, USA. Association for Computational Linguistics.
- Truc-Vien T. Nguyen and Alessandro Moschitti. 2011. End-to-end relation extraction using distant supervision from external semantic repositories. In *Proceedings of the 49th Annual Meeting of the Association for Computational Linguistics: Human Language Technologies: short papers - Volume 2*, HLT

- '11, pages 277–282, Stroudsburg, PA, USA. Association for Computational Linguistics.
- M. F. Porter. 1997. Readings in information retrieval. chapter An Algorithm for Suffix Stripping, pages 313–316. Morgan Kaufmann Publishers Inc., San Francisco, CA, USA.
- Sebastian Riedel, Limin Yao, and Andrew McCallum. 2010. Modeling relations and their mentions without labeled text. In *Proceedings of the European Conference on Machine Learning and Knowledge Discovery in Databases (ECML PKDD '10)*.
- Alan Ritter, Luke Zettlemoyer, Oren Etzioni, et al. 2013. Modeling missing data in distant supervision for information extraction. *Transactions of the Association for Computational Linguistics*, 1:367–378.
- Roland Roller and Mark Stevenson. 2014. Self-supervised relation extraction using umls. In *Proceedings of the Conference and Labs of the Evaluation Forum 2014*, Sheffield, England.
- Mihai Surdeanu, David McClosky, Mason Smith, Andrey Gusev, and Christopher Manning. 2011. Customizing an information extraction system to a new domain. In *Proceedings of the ACL 2011 Workshop on Relational Models of Semantics*, pages 2–10, Portland, Oregon, USA, June. Association for Computational Linguistics.
- Mihai Surdeanu, Julie Tibshirani, Ramesh Nallapati, and Christopher D. Manning. 2012. Multi-instance multi-label learning for relation extraction. In *Proceedings of the 2012 Joint Conference on Empirical Methods in Natural Language Processing and Computational Natural Language Learning, EMNLP-CoNLL '12*, pages 455–465, Stroudsburg, PA, USA. Association for Computational Linguistics.
- Shingo Takamatsu, Issei Sato, and Hiroshi Nakagawa. 2012. Reducing wrong labels in distant supervision for relation extraction. In *Proceedings of the 50th Annual Meeting of the Association for Computational Linguistics: Long Papers - Volume 1, ACL '12*, pages 721–729, Stroudsburg, PA, USA. Association for Computational Linguistics.
- Xingxing Zhang, Jianwen Zhang, Junyu Zeng, Jun Yan, Zheng Chen, and Zhifang Sui. 2013. Towards accurate distant supervision for relational facts extraction. In *Proceedings of the 51st Annual Meeting of the Association for Computational Linguistics (Volume 2: Short Papers)*, pages 810–815, Sofia, Bulgaria, August. Association for Computational Linguistics.