

E-EVAL: A Comprehensive Chinese K-12 Education Evaluation Benchmark for Large Language Models

Jinchang Hou^{1,2*}, Chang Ao^{1,3*}, Haihong Wu^{1,2}, Xiangtao Kong^{1,2}, Zhigang Zheng^{1,3},
Daijia Tang⁴, Chengming Li⁵, Xiping Hu⁵, Ruifeng Xu⁶, Shiwen Ni^{1†}, Min Yang^{1†}

¹Shenzhen Institute of Advanced Technology, Chinese Academy of Sciences

²University of Science and Technology of China

³Southern University of Science and Technology, ⁴UNION INFORMATION

⁵Shenzhen MSU-BIT University, ⁶Harbin Institute of Technology (Shenzhen)

{sw.ni, min.yang, c.ao, zg.zheng}@siat.ac.cn, licm@smbu.edu.cn, xuruifeng@hit.edu.cn

{jinchangh, taotaotao}@ustc.edu, haihongw@mail.ustc.edu.cn, tangdj@szlhxx.com

Abstract

The rapid development of Large Language Models (LLMs) has led to their increasing utilization in Chinese K-12 education. Despite the growing integration of LLMs and education, the absence of a dedicated benchmark for evaluating LLMs within this domain presents a pressing concern. Consequently, there is an urgent need for a comprehensive natural language processing benchmark to precisely assess the capabilities of various LLMs in Chinese K-12 education. In response, we introduce E-EVAL, the first comprehensive evaluation benchmark specifically tailored for Chinese K-12 education. E-EVAL comprises 4,351 multiple-choice questions spanning primary, middle, and high school levels, covering a diverse array of subjects. Through meticulous evaluation, we find that Chinese-dominant models often outperform English-dominant ones, with many exceeding GPT 4.0. However, most struggle with complex subjects like mathematics. Additionally, our analysis indicates that most Chinese-dominant LLMs do not achieve higher scores at the primary school level compared to the middle school level, highlighting the nuanced relationship between proficiency in higher-order and lower-order knowledge domains. Furthermore, experimental results highlight the effectiveness of the Chain of Thought (CoT) technique in scientific subjects and Few-shot prompting in liberal arts. Through E-EVAL, we aim to conduct a rigorous analysis delineating the strengths and limitations of LLMs in educational applications, thereby contributing significantly to the advancement of Chinese K-12 education and LLMs.^{1,2}

1 Introduction

Large Language Models have made significant advancements in the field of natural language processing and artificial intelligence. The evaluation

of the knowledge and reasoning capabilities embedded in these models has become progressively more difficult, leading to the development of multiple testing benchmarks. Novel benchmarks such as MMLU (Hendrycks et al., 2021), BIG-bench (Srivastava et al., 2022), and HELM (Liang et al., 2022) span multiple domains and tasks, encompassing real-world examinations and textbook knowledge. These benchmarks evaluate not only language comprehension but also the models' ability in common sense reasoning, mathematical reasoning, and code generation. Concurrently, with the rapid development of Chinese LLMs, an increasing number of Chinese benchmarks have begun to surface. MMCU (Zeng, 2023) focuses on professional domains, AGIEval (Zhong et al., 2023) targets China's standardized tests, C-EVAL (Huang et al., 2023) encompasses knowledge from middle school to professional fields, CMMLU (Li et al., 2023) concentrates on Chinese culture and CMB (Wang et al., 2023) focuses on the field of Chinese medicine. While these benchmarks primarily focus on the models' advanced ability, certain specific fields and topics crucial to the models might not receive adequate attention. Currently, there is no comprehensive assessment benchmark in Chinese K-12 education that is important for assessing and analyzing the specifics of LLMs' learning of human knowledge at all stages.

In this paper, we introduce E-EVAL, the first comprehensive evaluation suite focusing on Chinese K-12, aimed at evaluating basic models' knowledge and reasoning ability within the context of K-12. E-EVAL comprises 4,351 multiple-choice questions across primary, middle, and high school stages, as depicted in Figure 1 covering 23 subjects including *Primary School Chinese*, *Primary School Mathematics*, *Primary School English*, *Primary School Science*, *Primary School Ethics*, *Middle School Chinese*, *Middle School Mathemat-*

*Equal Contribution.

†Corresponding author.

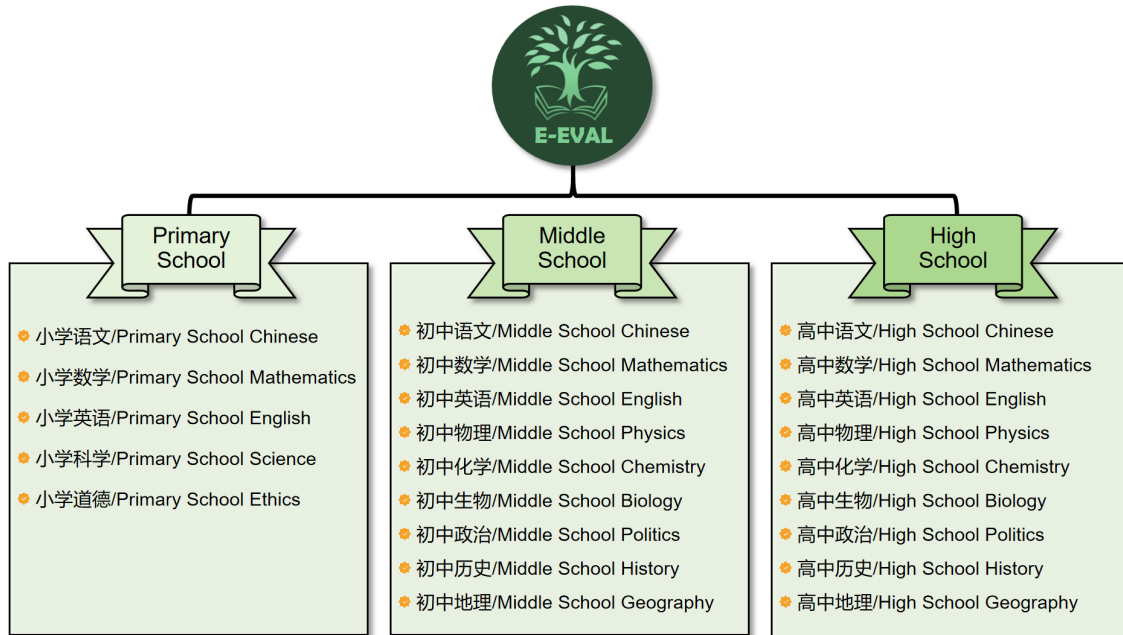


Figure 1: Overview diagram of the E-EVAL benchmark.

ics, Middle School English, Middle School Physics, Middle School Chemistry, Middle School Biology, Middle School Politics, Middle School History, Middle School Geography, High School Chinese, High School Mathematics, High School English, High School Physics, High School Chemistry, High School Biology, High School Politics, High School History, High School Geography. We further categorize the questions into two types: arts and science, with science encompassing disciplines like Mathematics, Physics, Chemistry, and arts including Chinese, English, History, etc., noting that the difficulty of arts subjects is generally lower than that of science.

Our evaluation of multiple open-source and commercial models on E-EVAL reveals that Chinese-dominant models outperform English-dominant ones in Chinese K-12 performance, with several models even surpassing GPT 4.0. However, performance in complex subjects like Mathematics remains subpar. Additionally, we observed that almost all advanced Chinese models struggle to achieve higher performance at lower educational levels compared to higher ones. This underscores the need for improvement in LLMs within the Chinese K-12 educational domain and highlights the potential value of E-EVAL as an important evaluation suite.

¹<https://github.com/AI-EDU-LAB/E-EVAL>

2 The E-EVAL Evaluation Benchmark

2.1 Design Principle

E-EVAL is a meticulously crafted benchmark designed to evaluate the performance of LLMs within the diverse educational environments of Chinese K-12 education. It encompasses a comprehensive coverage of various subjects, categorizing them into arts and science to provide an all-encompassing evaluation across all educational stages. Overall statistics of E-EVAL are presented in Table 1, with detailed subject-wise data in Appendix Table 5.

The benchmark employs a multiple-choice question format, akin to (Hendrycks et al., 2021), offering a clear and effective method for evaluating the precision and reasoning ability of LLMs. The questions, carefully selected and primarily sourced from homework and local small-scale exams, reflect the real educational setting while maintaining content originality and regional specificity. Special attention has been paid to the manual collection and fine processing of data, especially for subjects involving complex equations, to ensure high data integrity.

E-EVAL deliberately avoids using questions from national exams like the Gaokao to minimize the risk of data contamination, instead opting for mock tests and specific high school online exams. The choice to use PDF and Word documents as primary sources of information, rather than plain

text or structured questions, further reduces the risk of data leakage. E-EVAL is extracted from thousands of test papers from different regions, schools, grades and subjects. This benchmark is particularly aimed at aiding developers in rapidly understanding and enhancing the capability of Large Language Models in processing subject-specific knowledge and content with cultural uniqueness in the context of Chinese education. Thus, E-EVAL is a comprehensive, effective, and culturally benchmark.

2.2 Data Collection

Subjects: E-EVAL encompasses a range of subjects pivotal to Chinese K-12 education, covering key disciplines at primary, middle, and high school levels to cater to the educational needs of different age groups. This comprehensive coverage ensures E-EVAL’s high applicability and representativeness across various educational stages. For better organization of these subjects, they have been divided into two main categories: arts and science, to more aptly reflect the nature and characteristics of each discipline. In the arts category, subjects that study unique aspects of human society, such as politics, economics, and culture, are included. These subjects not only focus on the transmission of knowledge but also emphasize the cultivation of thinking ability and humanistic literacy. This category encompasses subjects like Chinese, English, Politics, History, and Geography, covering the fields of social science and humanity. On the other hand, the science category includes natural science, applied science, and mathematical logic, emphasizing the cultivation of scientific methods and experimental skills, as well as understanding of the natural world and technological domains. This category covers subjects such as Mathematics, Physics, Chemistry, and Biology, encompassing the STEM (Science, Technology, Engineering, and Mathematics) fields. In total, E-EVAL covers 23 different subjects, as illustrated in Figure 1.

Sources: Our data primarily come from free, regional homework, practice questions, and mock exams available on the internet³. These are typically provided by schools, educational institutions, or teachers to assist students in consolidating knowledge. Unlike public exams like the Gaokao or Zhongkao, these local homework and practice questions tend not to circulate widely, thereby posing

a lower risk of contamination. This choice of data source ensures better originality and quality of data, enhancing the credibility of the assessment. Moreover, these regional questions better reflect the real educational environment and academic requirements, as they are closer to what students encounter in their daily learning.

subject	#Subject	#Question
In terms of difficulty		
High School	9	2225
Middle School	9	1589
Primary School	5	537
In terms of arts/science		
Arts	13	2699
Science	10	1652
In terms of split		
Dev	23	115
Valid	23	424
Test	23	3812
Total	23	4351

Table 1: Statistics of E-EVAL.

Processing: The collected data are in various formats, primarily PDFs and Microsoft Word documents. For arts subjects like Chinese and English, we employ scripts to automatically parse PDF and Word documents for structured data. However, for science subjects with complex formulas, manual parsing is necessary, converting formulas into standard LaTeX format. Most of the collected questions follow a format of one question with four options, and questions with fewer than four options are discarded. For questions with more than four options, one incorrect option is removed. After format conversion, we conduct three rounds of manual checks: the first ensures no data duplication, the second verifies the correctness and completeness of formulas, and the third confirms the accuracy of answers. After checks, the order of options is deliberately adjusted to achieve a more balanced distribution of correct answers among options A, B, C, and D, with the aim of minimizing the potential impact of option bias within the model. The distribution of correct answer is shown in Table 2. A total of 4351 questions were collected, categorized into development, validation, and test sets across

²<https://huggingface.co/datasets/E-EVAL/E-EVAL>

³Our raw data comes from <https://www.zxxk.com/> and <https://zujian.xkw.com/>.

the 23 subjects. Additionally, we selected five representative questions with explanations to support Few-shot assessments. A representative example with explanations is illustrated in Appendix Figure 2. The final development set contains 115 questions, the validation set contains 424 questions, and the test set contains 3812 questions, as shown in Table 1.

Option	E-EVAL	C-EVAL	MMLU
A	24.3%	22.9%	23.1%
B	26.1%	26.0%	24.7%
C	25.8%	26.4%	25.5%
D	23.8%	24.7%	26.7%

Table 2: Distribution of the correct answer.

2.3 E-EVAL Arts and Science

We divided E-EVAL into two separate benchmarks by subject, E-EVAL Arts and E-EVAL Science. **E-EVAL Arts** includes 13 subjects: *primary school Chinese, primary school English, primary school ethics, middle school Chinese, middle school English, middle school politics, middle school history, middle school geography, high school Chinese, high school English, high school politics, high school history and high school geography*. **E-EVAL Science** consists of 10 subjects: *Primary school Mathematics, Primary school Science, Middle School Mathematics, Middle School Physics, Middle School Chemistry, Middle School Biology, High School Mathematics, High School Physics, High School Chemistry, and High School Biology*.

2.4 Evaluation

We use accuracy as the metric for evaluation. To ensure fairness, only the answers to the development and validation sets were disclosed, keeping the test set answers private. This approach prevents the incorporation of E-EVAL data in pre-training datasets. Users are invited to submit their predictions for the test set on our website⁴ to ascertain their accuracy. The site maintains a public leaderboard, where users have the discretion to publish their model’s results.

3 Experiment

Here we detail our experiments. We tested 15 advanced models on this benchmark, encompassing

⁴<https://eevalbenchmark.com>

various sizes, language orientations, and stages (pretrained or fine-tuned). This in-depth analysis of their performance offers a reliable reference point for future research in this field.

3.1 Setup

The experimental design of E-EVAL aims to evaluate the performance of LLMs on E-EVAL. Both open-source and proprietary advanced LLMs were tested. These models were prompted to select the correct choice from a set of questions with four options (ABCD), and regular expressions were used to extract the model’s selected response. Three evaluation methods were developed: zero-shot (Kojima et al., 2022), few-shot-answer-only (few-shot-ao), and few-shot-chain-of-thought (few-shot-cot) (Wei et al., 2022), to deeply analyze the models’ knowledge and reasoning ability.

3.2 Prompt

We introduced the following phrase before each question: "以下是中国关于[subject]考试的单项选择题，请选出其中的正确答案(Here is a multiple-choice question from China’s [subject] examination. Please select the correct answer)" In the zero-shot evaluation, the question and options were presented directly after the prompt, without any prior examples or additional information, requiring the model to rely solely on its existing knowledge and understanding to respond.

For the few-shot-ao evaluation, we appended five related questions without explanation from the development set. This method helps the model better understand and adapt to the current question by leveraging these prior examples, enhancing the model’s ability to adapt to new tasks using a minimal number of examples. In the few-shot-cot evaluation, we further included explanations and the prompt "让我们一步一步思考(Let’s think step by step)" building on the few-shot-ao approach. This is designed to encourage the model to demonstrate its step-by-step reasoning process in solving the question, rather than just providing the answer. This evaluation mode emphasizes the model’s reasoning ability, making its approach to problem-solving more akin to human thought processes. At the end of each question, we added "答案是: (Answer:)" to present the model’s final conclusion. The examples of few-shot-ao and few-shot-cot are shown in Appendix Figure 3 and Appendix Figure 4, respectively.

3.3 Models

We assessed 15 models from different countries, organizations, and sizes, as shown in Appendix Table 6. For commercial models, we assessed ChatGPT (OpenAI, 2022), GPT 4.0 (OpenAI, 2023), ERNIE-Bot and ERNIE-Bot 4.0 (Zhang et al., 2019). For open-source models, we tested Qwen-72B/7B (Bai et al., 2023), Yi-34B/6B-Chat (01.AI, 2023), ChatGLM3-6B (Du et al., 2022; Zeng et al., 2022), Baichuan2-13B/7B-Chat (Yang et al., 2023), Chinese-LLaMA-2-13B and Chinese-Alpaca-2-13B (Cui et al., 2023), among other general models. Additionally, we evaluated the EduChat series (Dan et al., 2023), focusing on China's education field, including Educhat-sft-002-13B-Baichuan, Educhat-sft-002-7B. Please refer to Appendix F for details on each model.

3.4 Main Results

The testing results of various models are presented in Table 3, where we report the average accuracy for three types of prompts across different categories. The accuracy for each of the three prompts each subject are provided in Appendix C. Among the large-scale models, Alibaba's Qwen-72B-Chat model achieves the highest accuracy rate, averaging 88.8%, attributed to its extensive parameter size and high-quality Chinese corpus. Baidu's ERNIE-Bot 4.0 follows closely in second place, trailing Qwen-72B-Chat by only 3.3 percentage points. Yi-34B-Chat and ERNIE-Bot demonstrate comparable overall performance, with a mere 1 percentage point difference in average accuracy. Notably, GPT 4.0 and ChatGPT exhibit poor performance, ranking 5th and 11th in accuracy, respectively. The underperformance of the GPTs may be attributed to the training corpus, where the Chinese corpus constitutes a low percentage. Among models with parameters less than 10B, Yi-6B-Chat performs the best, ranking 6th, approaching the accuracy of GPT 4.0 but still trailing behind Yi-34B-Chat. This suggests that models with larger parameter sizes demonstrate enhanced knowledge and inference, aligning with expectations. Qwen-7B-Chat, Baichuan2-13B-Chat, ChatGLM3-6B, and Baichuan2-7B-Chat closely follow, outperforming ChatGPT due to their rich and high-quality Chinese corpus, despite their smaller size. Chinese-LLaMA exhibits subpar performance, primarily attributed to the inadequacy of Chinese training data. Although EduChat is primarily trained on an

educational corpus, it underperformed in the evaluation, potentially due to its focus on reinforcing psychological and pedagogical theories.

Overall, Chinese-dominant models that have been trained on a wide range of Chinese corpora show excellent performance in this evaluation. In the same series, the large model outperformed the small model. In addition, all models performed much better in arts subjects than in science subjects. This is in line with our expectations, as text comprehension is a strong point of LLMs, while logical reasoning has been a weak point of LLMs.

3.5 Insight and Analysis

Are large language models better at arts or sciences? Observations from Table 3 regarding model performance across different subject categories reveal that all models perform better in arts subjects than in science subjects. Arts subjects emphasize memory, interpretation, and language understanding, aligning well with the basic construction of the models, which includes language processing and pattern recognition ability. Science subjects, on the other hand, involve logical reasoning, quantitative analysis, and solving complex problems, requiring strong logical reasoning and mathematical processing ability from the models. Therefore, it is logical that models exhibit better performance in arts subjects.

Does the simpler the question, the better the model performs? Further observations of model performance at different educational levels in Table 3 show that although the difficulty of the problems gradually increases from primary school to high school, the top-ranked models generally perform better at the middle school level than at the primary school level. This phenomenon is highly counter-intuitive because elementary school questions are far easier than middle school questions from a human cognitive perspective. As shown in Appendix Figure 5, a very simple elementary school math question was answered incorrectly by the top three models on the E-EVAL leaderboard. "*Four students ran a race, Ding Ding took 106 seconds, Qiang Qiang took 1 minute 15 seconds, Ming Ming took 92 seconds and Qi Qi took 1 minute 50 seconds. () ran the fastest.*". The correct answer is B: Qiang Qiang, but all three models predict C: Ming Ming. The Top-3 LLMs all thought that **92 seconds is faster than 75 seconds**. Ernie-Bot 4.0 model surprisingly generated such incredible re-

Model	Arts	Science	Primary	Middle	High	Average
Random	25.0	25.0	25.0	25.0	25.0	25.0
Qwen-72B-Chat	92.5	84.0	89.3	93.1	85.6	88.9
Ernie-Bot 4.0	90.8	78.6	87.3	89.6	82.1	85.5
Yi-34B-Chat	82.4	69.5	79.6	83.1	71.7	76.9
Ernie-Bot	81.7	68.2	78.7	80.8	71.6	75.9
GPT 4.0	75.4	64.2	81.9	76.8	70.6	70.6
Yi-6B-Chat	74.7	61.1	71.3	76.1	63.1	68.8
Qwen-7B-Chat	67.3	50.1	69.7	65.9	53.3	59.9
Baichuan2-13B-Chat	65.3	47.8	69.2	65.1	49.8	57.8
ChatGLM3-6B	61.9	51.9	60.0	65.0	51.8	57.6
Baichuan2-7B-Chat	62.2	45.0	61.2	61.3	48.6	54.8
ChatGPT	60.5	46.8	68.3	58.2	48.8	54.6
Chinese-Alpaca-2-13B	53.6	36.6	51.4	46.7	38.9	43.3
Educhat-sft-002-13B	41.8	28.9	39.9	39.9	32.7	36.3
Chinese-LLaMA-2-13B	44.2	31.9	39.2	38.5	33.2	35.9
Educhat-sft-002-13B-Baichuan	40.2	29.3	40.8	38.4	32.2	35.5

Table 3: Accuracy of multiple models in different categories.

sults as $92 < 106 < 110 < 75$. This result seems to indicate that LLMs are not good at comparing sizes, yet we find that LLMs are capable of solving similarly complex high school math problems. As shown in the example in Figure 6, the LLMs can accurately determine the magnitude relationship between $a = \log_{0.3} 0.4$, $b = \log_3 4$, $c = 4^{1/3}$ as $\log_{0.3} 0.4 < \log_3 4 < 4^{1/3}$.

We speculate that the pre-training data for these models is probable to use only middle and high school and college level knowledge and ignore the very simple elementary school level knowledge. It is possible that the developers believe that the primary school level is too simple, and that once more complex knowledge is mastered, the simpler knowledge will be automatically mastered. As a result, the model is trained with a bias toward solving higher stage topics and may perform poorly on simple knowledge that occurs less frequently in the training data.

Does Few-shot prompting help? Appendix Table 8 and Appendix Figure 7 illustrate the performance of the models under zero-shot and five-shot conditions. In general, the accuracy of most models is slightly higher under five-shot conditions compared to zero-shot, which is expected. However, there is a decrease in performance for the top two models, Qwen-72B-Chat and ERNIE-Bot 4.0. This phenomenon of performance degradation with a limited number of examples has also been noted

in other studies (Liu et al., 2023a; Zeng, 2023; Li et al., 2023). We believe that they can perform zero-shot reasoning without relying on Few-shot exemplars. Upon further observation from Table 4 and Appendix Figure 7, it is evident that the improvement in arts subjects, especially in Chinese language, is more significant than that in science subjects. We speculate that there are two main reasons for this phenomenon: the quality of the sample and the richness of prior knowledge. The Arts test questions, which primarily required language comprehension and knowledge retention, were highly similar among the samples and were mostly helpful questions. On the contrary, science test questions are diverse and often involve formulas and calculations, so it is highly unlikely that the five samples will contain a sufficient number of useful samples. In addition, during the pre-training phase, the model is exposed to a large amount of textual data, and the arts test questions are formally more similar to the tasks that the model handles during this phase. As a result, the model has more prior knowledge related to the arts, and a small number of art samples can activate this relevant knowledge in time.

Does Chain-of-Thought prompting help? As observed in Appendix Table 8 and Appendix Figure 8, compared to the five-shot-ao, nearly all models show a noticeable decline in average performance on the five-shot-cot. This observation aligns with

Model	Arts	Science	Average
Qwen-72B-Chat	92.4 / 92.6 / 92.6	89.0 / 88.7 / 88.8	89.0 / 88.7 / 88.8
ERNIE-Bot 4.0	90.5 / 91.8 / 90.1	86.7 / 85.2 / 84.6	86.7 / 85.2 / 84.6
Yi-34B-Chat	77.8 / 88.3 / 81.2	72.6 / 81.4 / 76.6	72.6 / 81.4 / 76.6
ERNIE-Bot	81.8 / 82.2 / 81.2	76.2 / 75.7 / 75.7	76.2 / 75.7 / 75.7
GPT 4.0	75.1 / 78.0 / 73.2	70.6 / 73.8 / 67.4	70.6 / 73.8 / 67.4
Yi-6B-Chat	76.1 / 76.5 / 71.7	68.8 / 71.3 / 66.6	68.8 / 71.3 / 66.6
Qwen-7B-Chat	65.9 / 68.1 / 68.1	58.8 / 60.5 / 60.4	58.8 / 60.5 / 60.4
Baichuan2-13B-Chat	65.2 / 68.5 / 62.4	56.1 / 61.0 / 56.2	56.1 / 61.0 / 56.2
ChatGLM3-6B	64.8 / 63.4 / 57.9	59.8 / 59.3 / 53.8	59.8 / 59.3 / 53.8
Baichuan2-7B-Chat	63.5 / 64.0 / 59.3	55.2 / 56.3 / 52.9	55.2 / 56.3 / 52.9
ChatGPT	61.0 / 63.1 / 57.5	54.6 / 56.9 / 52.4	54.6 / 56.9 / 52.4
Chinese-Alpaca-2-13B	51.1 / 53.7 / 43.9	44.8 / 46.3 / 38.8	44.8 / 46.3 / 38.8
Educhat-sft-002-13B	39.5 / 46.3 / 39.9	33.3 / 39.4 / 36.1	33.3 / 39.4 / 36.1
Chinese-LLaMA-2-13B	40.5 / 44.2 / 35.2	35.7 / 38.9 / 33.2	35.7 / 38.9 / 33.2
Educhat-sft-002-13B-Baichuan	60.0 / 15.9 / 44.9	54.1 / 14.4 / 38.1	54.1 / 14.4 / 38.1

Table 4: Accuracy of multiple models in arts and science subjects across different prompt scenarios, the number on the left is in zero-shot, the number in the middle is in five-shot-ao, and the number on the right is five-shot-cot.

the findings of (Huang et al., 2023; Zeng et al., 2024; Song et al., 2023), who noted a deterioration in model performance when applying CoT. We believe that many subjects in E-EVAL, especially in arts, do not require complex reasoning, and additional reasoning steps might decrease performance. Further observation from Table 4 and Appendix Figure 8 reveals that while the average performance decreased, there was a divergence between humanities and sciences, humanities showed a decline, whereas sciences, particularly high school and middle school mathematics, showed an increase. This is because science questions typically have fixed principles and a logical deduction process, hence CoT prompts can effectively guide models in structured reasoning. CoT can aid models in step-by-step construction of answers, which is advantageous for science questions. On the contrary, arts questions often involve broader and more ambiguous knowledge areas. These questions might depend more on intuition, experience, and understanding of polysemous terms, which are not suited for simple logical reasoning. Introducing CoT in arts questions could lead to models over-reasoning or developing reasoning chains in the wrong direction, as these questions might require a wider range of background knowledge and creative thinking, rather than simple step-by-step logical deduction. Therefore, the application of CoT needs to be adjusted based on the question type and complexity,

to better adapt to the characteristics of different tasks.

4 Related Work

With the continuous advancement of natural language processing technology, benchmarks have expanded to encompass more complex tasks, such as machine translation (Bojar et al., 2014) and summarization (Narayan et al., 2018; Hermann et al., 2015). The advent of comprehensive benchmarks like GLUE (Wang et al., 2018) and SuperGLUE (Sarlin et al., 2020) heralded a new era. These benchmarks amalgamate various natural language understanding tasks, including textual entailment, sentiment analysis, and question answering, thereby providing a standard for evaluating the holistic performance of models. Popular for their ability to assess models on both understanding and generating natural language, these benchmarks have gained prominence. Yet, the emergence of LLMs like BERT and GPT shifted the focus towards assessing performance on higher-level, more intricate tasks. Such models have even surpassed human-level performance on certain tasks, notably in text summarization (Hermann et al., 2015) and reading comprehension (Rajpurkar et al., 2018; Li et al., 2022). However, some recent work (Goyal et al., 2022; Liu et al., 2023b) have demonstrate that LLM can perform even better than human or human annotators on some tasks such as summarization,

leading to a re-evaluation of the appropriateness of using these benchmarks. To offer a more encompassing evaluation, new benchmarks like MMLU (Hendrycks et al., 2021) include a multitude of domains and tasks, ranging from real-world exams to book knowledge, assessing ability in language understanding, common sense reasoning (Clark et al., 2018; Talmor et al., 2019; Sakaguchi et al., 2021), mathematical reasoning (Hendrycks et al., 2021; Cobbe et al., 2021), and code generation (Chen et al., 2021; Austin et al., 2021). The BIG-bench (Srivastava et al., 2022) includes 204 diverse tasks, some of which are deemed beyond the current ability of LLMs. The HELM (Liang et al., 2022) benchmark comprises 42 distinct tasks, evaluating LLMs across seven metrics.

With the burgeoning development of Chinese Large Models, an increasing number of Chinese benchmarks have emerged. CLUE (Xu et al., 2020), an influential Chinese NLU benchmark, has been widely adopted in the field. Additionally, the team has recently introduced SuperCLUE (Xu et al., 2023), a benchmark tailored specifically for LLMs. Concurrently, Chinese benchmarks akin to MMLU (Hendrycks et al., 2021) have surfaced, such as MMCUL (Zeng, 2023), which emphasizes medicine and education within its four major domains. AGIEval (Zhong et al., 2023) focuses on standardized Chinese exams like the college entrance exam, while C-Eval (Huang et al., 2023) encompasses questions across four levels of difficulty from middle school to professional tests. M3KE (Liu et al., 2023a) gathers 71 tasks from the Chinese education examination system, akin to the coverage of C-Eval. CMMLU (Li et al., 2023), designed for the Chinese language and cultural context, is a fully localized Chinese benchmark. Compared to these benchmarks, E-EVAL distinguishes itself by (1) focusing on the field of K-12 Education in China, covering all subjects from primary to high school. (2) including the often-overlooked domain of elementary education. (3) sourcing data from homework and smaller-scale exams, ensuring a high degree of data privacy.

5 Discussion and Conclusion

Although LLMs have potential in K-12 education, their accurate assessment remains critical for practical application, and the introduction of the E-EVAL benchmark, customized for K-12 education in China, provides a more accurate and comprehen-

sive evaluation benchmark. Although E-EVAL is not a competitive ranking, it serves as a key tool for tracking the progress of LLMs in Chinese K-12 education. This may pave the way for a wider and more effective utilization of large-scale language models in the field of K-12 education in China.

In this work, we obtained the following potentially insightful observations.

- Chinese-dominant LLMs have outperformed powerful Generalized models like GPT-4 in Chinese K-12 education.
- Generally, the more model parameters the better the results, but smaller models can also perform better than models of larger sizes.
- The gap between open-source and closed-source models is currently very tight, and open-source models are growing rapidly.
- Some specially trained educational LLMs still lag behind generalized models in performance, suggesting that there is still much space for improvement in the education vertical.
- Overall, models perform slightly better in Few-shot compared to Zero-shot, with a more significant improvement observed in liberal arts subjects as opposed to science subjects.
- The application of CoT has a negative impact on the model as a whole, but it is helpful for complex science subjects such as mathematics.
- LLMs are better at liberal arts than science, and especially perform poorly in highly logical mathematics.
- The poor performance of the Chinese-dominant large language model on simple problems at primary school level may indicate that the model’s mastery of higher-order knowledge does not mean that it has also mastered lower-order knowledge.

Limitations

While we have made every effort to collect questions from various disciplines as comprehensively as possible, we acknowledge that certain subjects, such as physics and geography, often include questions with graphical representations. Regrettably, our current collection does not cover these types of questions with accompanying images.

Acknowledgement

This work was supported by National Key Research and Development Program of China (2022YFF0902100), Postdoctoral Fellowship Program of CPSF (GZC20232873), Guangdong Basic and Applied Basic Research Foundation (2023A1515110718 and 2024A1515012003), National Natural Science Foundation of China (62376262), the Natural Science Foundation of Guangdong Province of China (2024A1515030166), Shenzhen Science and Technology Innovation Program (KQTD20190929172835662), Shenzhen Basic Research Foundation (JCYJ20210324115614039).

References

- 01.AI. 2023. Yi. <https://github.com/01-ai/Yi>.
- Jacob Austin, Augustus Odena, Maxwell Nye, Maarten Bosma, Henryk Michalewski, David Dohan, Ellen Jiang, Carrie Cai, Michael Terry, Quoc Le, and Charles Sutton. 2021. [Program synthesis with large language models](#).
- Jinze Bai, Shuai Bai, Yunfei Chu, Zeyu Cui, Kai Dang, Xiaodong Deng, Yang Fan, Wenbin Ge, Yu Han, Fei Huang, et al. 2023. Qwen technical report. *arXiv preprint arXiv:2309.16609*.
- Ondřej Bojar, Christian Buck, Christian Federmann, Barry Haddow, Philipp Koehn, Johannes Leveling, Christof Monz, Pavel Pecina, Matt Post, Herve Saint-Amand, Radu Soricut, Lucia Specia, and Aleš Tamchyna. 2014. [Findings of the 2014 workshop on statistical machine translation](#). In *Proceedings of the Ninth Workshop on Statistical Machine Translation*, pages 12–58, Baltimore, Maryland, USA. Association for Computational Linguistics.
- Mark Chen, Jerry Tworek, Heewoo Jun, Qiming Yuan, Henrique Ponde de Oliveira Pinto, Jared Kaplan, Harri Edwards, Yuri Burda, Nicholas Joseph, Greg Brockman, Alex Ray, Raul Puri, Gretchen Krueger, Michael Petrov, Heidy Khlaaf, Girish Sastry, Pamela Mishkin, Brooke Chan, Scott Gray, Nick Ryder, Mikhail Pavlov, Alethea Power, Lukasz Kaiser, Mohammad Bavarian, Clemens Winter, Philippe Tillet, Felipe Petroski Such, Dave Cummings, Matthias Plappert, Fotios Chantzis, Elizabeth Barnes, Ariel Herbert-Voss, William Hebgan Guss, Alex Nichol, Alex Paino, Nikolai Tezak, Jie Tang, Igor Babuschkin, Suchir Balaji, Shantanu Jain, William Saunders, Christopher Hesse, Andrew N. Carr, Jan Leike, Josh Achiam, Vedant Misra, Evan Morikawa, Alec Radford, Matthew Knight, Miles Brundage, Mira Murati, Katie Mayer, Peter Welinder, Bob McGrew, Dario Amodei, Sam McCandlish, Ilya Sutskever, and Wojciech Zaremba. 2021. [Evaluating large language models trained on code](#).
- Peter Clark, Isaac Cowhey, Oren Etzioni, Tushar Khot, Ashish Sabharwal, Carissa Schoenick, and Oyvind Tafjord. 2018. [Think you have solved question answering? try arc, the ai2 reasoning challenge](#).
- Karl Cobbe, Vineet Kosaraju, Mohammad Bavarian, Mark Chen, Heewoo Jun, Lukasz Kaiser, Matthias Plappert, Jerry Tworek, Jacob Hilton, Reiichiro Nakano, et al. 2021. Training verifiers to solve math word problems. *arXiv preprint arXiv:2110.14168*.
- Yiming Cui, Ziqing Yang, and Xin Yao. 2023. [Efficient and effective text encoding for chinese llama and alpaca](#). *arXiv preprint arXiv:2304.08177*.
- Yuhao Dan, Zhikai Lei, Yiyang Gu, Yong Li, Jianghao Yin, Jiaju Lin, Linhao Ye, Zhiyan Tie, Yougen Zhou, Yilei Wang, et al. 2023. Educhat: A large-scale language model-based chatbot system for intelligent education. *arXiv preprint arXiv:2308.02773*.
- Zhengxiao Du, Yujie Qian, Xiao Liu, Ming Ding, Jiezhong Qiu, Zhilin Yang, and Jie Tang. 2022. Glm: General language model pretraining with autoregressive blank infilling. In *Proceedings of the 60th Annual Meeting of the Association for Computational Linguistics (Volume 1: Long Papers)*, pages 320–335.
- Tanya Goyal, Junyi Jessy Li, and Greg Durrett. 2022. News summarization and evaluation in the era of gpt-3. *arXiv preprint arXiv:2209.12356*.
- Dan Hendrycks, Collin Burns, Steven Basart, Andy Zou, Mantas Mazeika, Dawn Song, and Jacob Steinhardt. 2021. [Measuring massive multitask language understanding](#). In *International Conference on Learning Representations*.
- Karl Moritz Hermann, Tomas Kocisky, Edward Grefenstette, Lasse Espeholt, Will Kay, Mustafa Suleyman, and Phil Blunsom. 2015. Teaching machines to read and comprehend. *Advances in neural information processing systems*, 28.
- Yuzhen Huang, Yuzhuo Bai, Zhihao Zhu, Junlei Zhang, Jinghan Zhang, Tangjun Su, Junteng Liu, Chuancheng Lv, Yikai Zhang, Jiayi Lei, et al. 2023. C-eval: A multi-level multi-discipline chinese evaluation suite for foundation models. *arXiv preprint arXiv:2305.08322*.
- Takeshi Kojima, Shixiang Shane Gu, Machel Reid, Yutaka Matsuo, and Yusuke Iwasawa. 2022. [Large language models are zero-shot reasoners](#). In *Advances in Neural Information Processing Systems*.
- Haonan Li, Martin Tomko, Maria Vasardani, and Timothy Baldwin. 2022. [MultiSpanQA: A dataset for multi-span question answering](#). In *Proceedings of the 2022 Conference of the North American Chapter of the Association for Computational Linguistics: Human Language Technologies*, pages 1250–1260, Seattle, United States. Association for Computational Linguistics.

- Haonan Li, Yixuan Zhang, Fajri Koto, Yifei Yang, Hai Zhao, Yeyun Gong, Nan Duan, and Timothy Baldwin. 2023. Cmmllu: Measuring massive multitask language understanding in chinese. *arXiv preprint arXiv:2306.09212*.
- Percy Liang, Rishi Bommasani, Tony Lee, Dimitris Tsipras, Dilara Soylu, Michihiro Yasunaga, Yian Zhang, Deepak Narayanan, Yuhuai Wu, Ananya Kumar, et al. 2022. Holistic evaluation of language models. *arXiv preprint arXiv:2211.09110*.
- Chuang Liu, Renren Jin, Yuqi Ren, Linhao Yu, Tianyu Dong, Xiaohan Peng, Shuting Zhang, Jianxiang Peng, Peiyi Zhang, Qingqing Lyu, Xiaowen Su, Qun Liu, and Deyi Xiong. 2023a. **M3ke: A massive multi-level multi-subject knowledge evaluation benchmark for chinese large language models**.
- Yang Liu, Dan Iter, Yichong Xu, Shuohang Wang, Ruo Chen Xu, and Chenguang Zhu. 2023b. Gpteval: Nlg evaluation using gpt-4 with better human alignment. *arXiv preprint arXiv:2303.16634*.
- Shashi Narayan, Shay B. Cohen, and Mirella Lapata. 2018. **Don't give me the details, just the summary! topic-aware convolutional neural networks for extreme summarization**. In *Proceedings of the 2018 Conference on Empirical Methods in Natural Language Processing*, pages 1797–1807, Brussels, Belgium. Association for Computational Linguistics.
- OpenAI. 2022. **Chatgpt: Optimizing language models for dialogue**. *OpenAI Blog*.
- OpenAI. 2023. Gpt-4 technical report. *arXiv preprint arXiv:2303.08774*.
- Pranav Rajpurkar, Robin Jia, and Percy Liang. 2018. Know what you don't know: Unanswerable questions for squad. *arXiv preprint arXiv:1806.03822*.
- Keisuke Sakaguchi, Ronan Le Bras, Chandra Bhagavatula, and Yejin Choi. 2021. Winogrande: An adversarial winograd schema challenge at scale. *Communications of the ACM*, 64(9):99–106.
- Paul-Edouard Sarlin, Daniel DeTone, Tomasz Malisiewicz, and Andrew Rabinovich. 2020. Superglue: Learning feature matching with graph neural networks. In *Proceedings of the IEEE/CVF conference on computer vision and pattern recognition*, pages 4938–4947.
- Linxin Song, Jieyu Zhang, Lechao Cheng, Pengyuan Zhou, Tianyi Zhou, and Irene Li. 2023. Nlpbench: Evaluating large language models on solving nlp problems. *arXiv preprint arXiv:2309.15630*.
- Aarohi Srivastava, Abhinav Rastogi, Abhishek Rao, Abu Awal Md Shoeb, Abubakar Abid, Adam Fisch, Adam R Brown, Adam Santoro, Aditya Gupta, Adrià Garriga-Alonso, et al. 2022. Beyond the imitation game: Quantifying and extrapolating the capabilities of language models. *arXiv preprint arXiv:2206.04615*.
- Alon Talmor, Jonathan Herzig, Nicholas Lourie, and Jonathan Berant. 2019. **CommonsenseQA: A question answering challenge targeting commonsense knowledge**. In *Proceedings of the 2019 Conference of the North American Chapter of the Association for Computational Linguistics: Human Language Technologies, Volume 1 (Long and Short Papers)*, pages 4149–4158, Minneapolis, Minnesota. Association for Computational Linguistics.
- Alex Wang, Amanpreet Singh, Julian Michael, Felix Hill, Omer Levy, and Samuel R Bowman. 2018. Glue: A multi-task benchmark and analysis platform for natural language understanding. *arXiv preprint arXiv:1804.07461*.
- Xidong Wang, Guiming Hardy Chen, Dingjie Song, Zhiyi Zhang, Zhihong Chen, Qingying Xiao, Feng Jiang, Jianquan Li, Xiang Wan, Benyou Wang, et al. 2023. Cmb: A comprehensive medical benchmark in chinese. *arXiv preprint arXiv:2308.08833*.
- Jason Wei, Xuezhi Wang, Dale Schuurmans, Maarten Bosma, brian ichter, Fei Xia, Ed H. Chi, Quoc V Le, and Denny Zhou. 2022. **Chain of thought prompting elicits reasoning in large language models**. In *Advances in Neural Information Processing Systems*.
- Liang Xu, Hai Hu, Xuanwei Zhang, Lu Li, Chenjie Cao, Yudong Li, Yechen Xu, Kai Sun, Dian Yu, Cong Yu, Yin Tian, Qianqian Dong, Weitang Liu, Bo Shi, Yiming Cui, Junyi Li, Jun Zeng, Rongzhao Wang, Weijian Xie, Yanting Li, Yina Patterson, Zuoyu Tian, Yiwen Zhang, He Zhou, Shaowei Hua Liu, Zhe Zhao, Qipeng Zhao, Cong Yue, Xinrui Zhang, Zhengliang Yang, Kyle Richardson, and Zhenzhong Lan. 2020. **CLUE: A Chinese language understanding evaluation benchmark**. In *Proceedings of the 28th International Conference on Computational Linguistics*, pages 4762–4772, Barcelona, Spain (Online). International Committee on Computational Linguistics.
- Liang Xu, Anqi Li, Lei Zhu, Hang Xue, Changtai Zhu, Kangkang Zhao, Haonan He, Xuanwei Zhang, Qiyue Kang, and Zhenzhong Lan. 2023. Superclue: A comprehensive chinese large language model benchmark. *arXiv preprint arXiv:2307.15020*.
- Aiyuan Yang, Bin Xiao, Bingning Wang, Borong Zhang, Ce Bian, Chao Yin, Chenxu Lv, Da Pan, Dian Wang, Dong Yan, Fan Yang, Fei Deng, Feng Wang, Feng Liu, Guangwei Ai, Guosheng Dong, Haizhou Zhao, Hang Xu, Haoze Sun, Hongda Zhang, Hui Liu, Jiaming Ji, Jian Xie, JunTao Dai, Kun Fang, Lei Su, Liang Song, Lifeng Liu, Liyun Ru, Luyao Ma, Mang Wang, Mickel Liu, MingAn Lin, Nuolan Nie, Peidong Guo, Ruiyang Sun, Tao Zhang, Tianpeng Li, Tianyu Li, Wei Cheng, Weipeng Chen, Xiangrong Zeng, Xiaochuan Wang, Xiaoxi Chen, Xin Men, Xin Yu, Xuehai Pan, Yanjun Shen, Yiding Wang, Yiyu Li, Youxin Jiang, Yuchen Gao, Yupeng Zhang, Zenan Zhou, and Zhiying Wu. 2023. **Baichuan 2: Open large-scale language models**.

Aohan Zeng, Xiao Liu, Zhengxiao Du, Zihan Wang, Hanyu Lai, Ming Ding, Zhuoyi Yang, Yifan Xu, Wendi Zheng, Xiao Xia, et al. 2022. Glm-130b: An open bilingual pre-trained model. *arXiv preprint arXiv:2210.02414*.

Hui Zeng. 2023. Measuring massive multitask chinese understanding. *arXiv preprint arXiv:2304.12986*.

Zhiyuan Zeng, Jiatong Yu, Tianyu Gao, Yu Meng, Tanya Goyal, and Danqi Chen. 2024. [Evaluating large language models at evaluating instruction following](#). In *The Twelfth International Conference on Learning Representations*.

Zhengyan Zhang, Xu Han, Zhiyuan Liu, Xin Jiang, Maosong Sun, and Qun Liu. 2019. Ernie: Enhanced language representation with informative entities. *arXiv preprint arXiv:1905.07129*.

Wanjun Zhong, Ruixiang Cui, Yiduo Guo, Yaobo Liang, Shuai Lu, Yanlin Wang, Amin Saied, Weizhu Chen, and Nan Duan. 2023. Agieval: A human-centric benchmark for evaluating foundation models. *arXiv preprint arXiv:2304.06364*.

A Statistics of E-EVAL

Table 5 lists all subjects of E-EVAL, their categories, and the number of questions for each subject. Table 6 lists all models evaluated in this paper.

B Bias of Option

The distribution of correct answers is presented in Table 2. We acknowledge minor fluctuations in the proportion of options, which hover around a random 25% mark and resemble those seen in C-EVA and MMLU (Huang et al., 2023; Li et al., 2023). To assess potential option bias, we shuffled the choice order in questions and randomly selected three permutations for each. We then evaluated ChatGPT, ERNIE-Bot, and ChatGLM3-6B on these permutations of E-EVAL. The zero-shot results in answer-only setting are summarized in Table 7. Our results indicate a low variance in accuracy across permutations, suggesting minimal option bias.

C Results of Evaluations

Table 8 shows the accuracy of multiple models in different prompt scenarios. Table 9 shows the performance of partial models on each subjects. The accuracy of zero-shot, five-shot-ao and five-shot-cot is shown in Table 10, 11 and 12 respectively.

D Evaluation Samples

Figure 2 is a development example with explanations from E-EVAL. Figure 3 is an example with five-shot in answer-only setting. Figure 4 is an example with five-shot in Chain-of-Thought setting. Figure 5 is a simple primary school math problem with the predictions of the top-3 models. Figure 6 is a hard high school math problem with the predictions of the top-3 models.

E Accuracy Improvement

The accuracy improvement from zero-shot-ao to five-shot-ao across 23 subjects is shown in Figure 7, and the accuracy improvement from five-shot-ao to five-shot-cot is shown in Figure 8.

F Models being Evaluated

Baichuan 2-13B and Baichuan 2-7B are the new generation of open-source large language models launched by Baichuan Intelligence. It is trained on a high-quality corpus with 2.6 trillion tokens and has achieved the best performance in authoritative Chinese and English benchmarks of the same size. Baichuan 2 comes in two model variants: Baichuan 2-7B with 70 billion parameters and Baichuan 2-13B with 130 billion parameters. Both models have undergone training on a massive 26 trillion tokens. In this paper, we evaluate the models Baichuan 2-7B-Chat and Baichuan 2-13B-Chat, specifically optimized for adhering to human instructions. These models demonstrate outstanding performance in dialogue and context comprehension.

Qwen-72B and Qwen-7B are integral components of the Qwen series of language models developed by Alibaba Cloud. Both models are built upon the Transformer architecture and have been trained on a diverse range of data sources, including internet texts, professional literature, and code. Qwen-72B, boasting a substantial 72 billion parameters, excels in multiple Chinese and English downstream tasks, particularly in areas such as reasoning and translation. It has undergone extensive pretraining on over 3 trillion tokens, encompassing a wide array of languages and domains, and can support contexts of up to 32,000 tokens in length. On the other hand, the 7-billion-parameter Qwen-7B also demonstrates remarkable data coverage and diversity. In this paper, the models evaluated are the chatbot variants fine-tuned from Qwen-72B and

Subject	Category	#Questions
Primary School Chinese (小学语文)	Arts	96
Primary School Mathematics (小学数学)	Science	102
Primary School English (小学英语)	Arts	94
Primary School Science (小学科学)	Science	82
Primary School Ethics (小学道德)	Arts	87
Middle School Chinese (初中语文)	Arts	148
Middle School Mathematics (初中数学)	Science	172
Middle School English (初中英语)	Arts	138
Middle School Physics (初中物理)	Science	152
Middle School Chemistry (初中化学)	Science	148
Middle School Biology (初中生物)	Science	169
Middle School Politics (初中政治)	Arts	174
Middle School History (初中历史)	Arts	127
Middle School Geography (初中地理)	Arts	161
High School Chinese (高中语文)	Arts	259
High School Mathematics (高中数学)	Science	251
High School English (高中英语)	Arts	261
High School Physics (高中物理)	Science	190
High School Chemistry (高中化学)	Science	176
High School Biology (高中生物)	Science	210
High School Politics (高中政治)	Arts	238
High School History (高中历史)	Arts	207
High School Geography (高中地理)	Arts	170

Table 5: Summary of all 23 subjects.

Qwen-7B through human alignment techniques.

ChatGLM3-6B is the latest open-source model in the ChatGLM series, excels with its base model, ChatGLM3-6B-Base, incorporating diverse training datasets, sufficient training steps, and effective strategies. This culminates in superior performance on various datasets, including those involving semantics, mathematics, reasoning, coding, and knowledge, especially notable among models with less than 10 billion parameters. The model introduces an innovative Prompt format, enhancing multi-turn dialogues, function calls, code interpretation, and agent tasks. It represents a significant advance in bilingual (Chinese and English) language processing, particularly in question answering and dialogue tasks.

Yi-34B and Yi-6B are two large language models in the Yi series developed by 01.AI. Trained from scratch on a 3T multilingual corpus, they exhibit exceptional bilingual ability, excelling in language comprehension, commonsense reasoning, and reading comprehension. Yi-34B performed outstandingly in various assessments, ranking

second only to GPT 4.0 on the AlpacaEval leaderboard in December 2023, surpassing major models like LLaMA2-Chat-70B. In the field of Chinese, it ranked second in the SuperCLUE in October 2023, again only behind GPT 4.0, and ahead of models like Baidu’s ERNIE. Although Yi-6B has fewer parameters than Yi-34B, it plays a crucial role in innovative projects and diverse applications, demonstrating strong language processing ability. In this paper, we are using the chat versions of Yi-34B and Yi-6B.

ChatGPT and GPT 4.0, developed by OpenAI, represent the latest advancements in the GPT series of AI models. While ChatGPT is based on particular GPT foundation models and focuses on smooth conversational experiences, GPT 4.0 is the newest iteration, introducing the capability to process visual inputs, enriching user interactions with the model. GPT 4.0 has demonstrated improved factual response rates and a significant reduction in responses to inappropriate content in OpenAI’s internal tests. These models are trained to better follow human instructions, offering

Model	Creator	#Parameters	Access
Qwen-72B	Alibaba	72B	Weights
Ernie-Bot 4.0	Baidu	undisclosed	API
Yi-34B-Chat	01.AI	34B	Weights
Ernie-Bot	Baidu	undisclosed	API
GPT 4.0	OpenAI	undisclosed	API
Yi-6B-Chat	01.AI	6B	Weights
ChatGLM3-6B	Tsinghua	6B	Weights
Qwen-7B	Alibaba	7B	Weights
Baichuan2-13B-Chat	Baichuan	13B	Weights
Baichuan2-7B-Chat	Baichuan	7B	Weights
ChatGPT	OpenAI	undisclosed	API
Chinese-Alpaca-2-13B	HFL	13B	Weights
Educhat-sft-002-13B	ECNU	13B	Weights
Chinese-LLaMA-2-13B	HFL	13B	Weights
Educhat-sft-002-13B-Baichuan	ECNU	13B	Weights

Table 6: Models evaluated in this paper.

Model	Arts	Science	Primary	Middle	High	Average
ChatGPT	59.3±1.3	46.1±1.1	66.1±2.0	57.5±0.1	47.9±0.9	53.6±0.7
ERNIE-Bot	83.6±1.4	71.1±1.6	81.8±1.3	84.7±1.7	72.7±1.3	78.2±1.5
ChatGLM3-6B	64.9±0.4	53.0±0.4	60.5±2.2	66.2±1.2	54.9±0.5	59.7±0.1

Table 7: Zero-shot average accuracy and variance in answer-only setting. We present the average accuracy and variance across 3 permutations within each category.

helpfulness, harmlessness, and honesty. GPT 4.0’s updates also include an increased input/output capacity, enhanced creativity and collaborative ability, and the ability to connect to third-party knowledge sources. In the paper, the version of ChatGPT is gpt-3.5-turbo-1106 and GPT 4.0 is gpt-4-0613.

ERNIE-Bot and ERNIE-Bot 4.0 are advanced large language models developed by Baidu. ERNIE-Bot is an industrial-grade, knowledge-enhanced large language model that encompasses extensive Chinese data. It possesses robust capabilities in text comprehension, dialogue question-answering, and content creation. The 4.0 version of ERNIE-Bot represents a comprehensive upgrade of the foundational model, achieving significant improvements in understanding, generation, logic, and memory capabilities compared to its predecessor. The notable feature of ERNIE-Bot 4.0 is its multimodal capability, capable of generating a range of content including text, images, and videos based on simple text prompts and image inputs. Compared to ChatGPT,

ERNIE-Bot 4.0 has an advantage in multimodal ability, though ChatGPT Plus with GPT 4.0 provides multimodality, it currently does not support video generation.

Chinese LLaMA & Alpaca LLM project is based on the LLaMA-2, released by Meta. Developers open-source Chinese LLaMA-2 (foundation model) and Alpaca-2 (instruction-following model). These models extend the original LLaMA-2 structure by incorporating an additional 20,000 Chinese tokens into its vocabulary and undergoes secondary pre-training and instruction fine-tuning on Chinese data, which further improved the fundamental semantic understanding of the Chinese language, resulting in a significant performance improvement compared to the first-generation models. In this paper, we used Chinese-LLaMA-2-13B and Chinese-Alpaca-2-13B.

EduChat is a LLM-based chatbot system in the education domain. Its goal is to support personalized, fair, and compassionate intelligent education, serving teachers, students, and parents.

Model	Zero-shot	Five-shot-ao	Five-shot-cot	Average
Random	25.0	25.0	25.0	25.0
Qwen-72B-Chat	89.0	88.7	88.8	88.9
Ernie-Bot 4.0	86.7	85.2	84.6	85.5
Yi-34B-Chat	72.5	81.4	76.6	76.9
Ernie-Bot	76.1	75.7	75.7	75.9
GPT 4.0	70.5	73.8	67.4	70.6
Yi-6B-Chat	68.8	71.2	66.5	68.8
Qwen-7B-Chat	58.7	60.4	60.4	59.9
Baichuan2-13B-Chat	56.1	60.9	56.1	57.8
ChatGLM3-6B	59.8	59.2	53.7	57.6
Baichuan2-7B-Chat	55.2	56.2	52.9	54.8
ChatGPT	54.5	56.9	52.3	54.6
Chinese-Alpaca-2-13B	44.8	46.2	38.7	43.3
Educhat-sft-002-13B	33.2	39.4	36.1	36.3
Chinese-LLaMA-2-13B	35.7	38.9	33.2	35.9
Educhat-sft-002-13B-Baichuan	54.0	14.4	38.1	35.5

Table 8: Accuracy of multiple models in different prompt scenarios.

Guided by theories from psychology and education, it further strengthens educational functions such as open question answering, essay assessment, Socratic teaching, and emotional support based on the existing basic LLMs. Developers use an educational corpus for pre-training to enable the model to acquire domain-specific knowledge. They further fine-tune the model on designed system prompts and instructions to stimulate a range of tool usage skills. They proposed several versions of the model. In this paper, we evaluated two models in educhat, educhat-sft-002-13B-Baichuan and educhat-sft-002-13B.

Subject	Qwen-72B-Chat	Ernie-Bot 4.0	Yi-34B	GPT 4.0	ChatGLM3-6B
Primary School					
Chinese	87.5 / 90.6 / 89.5	87.5 / 94.7 / 88.5	66.6 / 86.4 / 73.9	70.8 / 75.0 / 73.9	56.2 / 51.0 / 54.1
Mathematics	82.3 / 75.4 / 75.4	79.4 / 62.7 / 62.7	59.8 / 62.7 / 70.5	69.6 / 71.5 / 73.5	39.2 / 45.0 / 38.2
English	95.7 / 95.7 / 95.7	96.8 / 95.7 / 96.8	90.4 / 94.6 / 85.1	92.5 / 92.5 / 89.3	62.7 / 62.7 / 48.9
Science	90.2 / 87.8 / 89.0	92.6 / 89.0 / 82.9	68.2 / 85.3 / 84.1	85.3 / 82.9 / 85.3	71.9 / 69.5 / 67.0
Ethics	97.7 / 96.5 / 96.5	97.7 / 96.5 / 94.2	80.4 / 97.7 / 95.4	94.2 / 95.4 / 83.9	83.9 / 87.3 / 77.0
Middle School					
Chinese	85.8 / 88.5 / 88.5	87.1 / 89.1 / 89.8	75.6 / 80.4 / 70.9	54.7 / 61.4 / 51.3	52.0 / 50.0 / 41.8
Mathematics	83.7 / 84.3 / 84.3	77.9 / 64.5 / 68.6	57.5 / 61.6 / 70.9	59.8 / 65.1 / 64.5	37.2 / 40.6 / 51.1
English	97.8 / 97.1 / 97.1	97.8 / 97.1 / 97.1	83.3 / 94.9 / 91.3	93.4 / 91.3 / 89.8	70.2 / 71.0 / 60.1
Physics	91.4 / 93.4 / 94.0	89.4 / 76.3 / 80.9	78.9 / 85.5 / 83.5	76.3 / 78.9 / 71.0	69.7 / 70.5 / 61.8
Chemistry	95.2 / 94.5 / 94.5	91.2 / 89.6 / 89.1	75.0 / 85.8 / 82.4	67.5 / 69.5 / 64.8	67.5 / 67.5 / 66.2
Biology	95.8 / 93.4 / 93.4	95.8 / 97.0 / 97.0	81.6 / 93.4 / 89.9	87.5 / 88.7 / 82.2	72.1 / 72.1 / 59.1
Politics	94.2 / 95.9 / 95.9	94.2 / 91.3 / 93.1	92.5 / 95.9 / 94.2	83.9 / 86.7 / 79.3	82.7 / 83.9 / 77.5
History	99.2 / 97.6 / 98.4	97.6 / 97.6 / 95.2	87.4 / 96.8 / 92.9	88.9 / 88.9 / 88.1	81.1 / 78.7 / 77.1
Geography	97.5 / 95.0 / 95.0	95.6 / 95.0 / 93.7	75.7 / 95.6 / 78.8	81.9 / 83.8 / 81.3	70.1 / 68.3 / 62.7
High School					
Chinese	83.0 / 89.1 / 89.1	74.9 / 79.5 / 76.0	62.9 / 66.0 / 56.7	39.3 / 44.4 / 37.8	40.5 / 36.2 / 33.5
Mathematics	58.5 / 57.7 / 58.5	54.9 / 61.7 / 64.1	32.2 / 33.0 / 37.0	42.6 / 43.0 / 28.2	33.8 / 33.8 / 26.6
English	95.0 / 93.8 / 93.4	94.2 / 95.7 / 93.1	72.0 / 91.9 / 82.7	88.5 / 90.0 / 86.2	64.7 / 59.0 / 54.7
Physics	81.5 / 81.0 / 80.5	84.7 / 63.6 / 64.7	74.2 / 79.4 / 70.5	61.5 / 71.0 / 56.3	52.1 / 52.1 / 45.2
Chemistry	91.4 / 89.7 / 89.7	86.9 / 86.9 / 85.7	68.7 / 74.4 / 69.3	59.0 / 65.9 / 50.5	51.1 / 44.3 / 46.0
Biology	91.9 / 91.4 / 91.4	83.3 / 84.2 / 83.8	75.2 / 83.8 / 73.3	63.8 / 69.0 / 58.5	56.1 / 60.9 / 44.7
Politics	94.1 / 91.5 / 91.5	88.6 / 91.1 / 88.2	82.7 / 90.7 / 84.8	65.5 / 71.8 / 66.3	70.1 / 74.7 / 67.6
History	92.2 / 89.3 / 89.3	90.8 / 92.2 / 91.7	81.6 / 90.8 / 87.9	78.2 / 81.1 / 79.2	68.5 / 64.7 / 63.7
Geography	88.2 / 90.0 / 90.5	88.8 / 90.0 / 87.0	73.5 / 84.1 / 78.8	78.8 / 81.1 / 75.8	57.0 / 57.6 / 49.4

Table 9: Accuracy of partial models in all subjects across different prompt scenarios, the number on the left is in zero-shot, the number in the middle is in five-shot-ao, and the number on the right is in five-shot-cot.

Model	Arts	Science	Primary	Middle	High	Average
Random	25.0	25.0	25.0	25.0	25.0	25.0
Qwen-72B-Chat	92.4	84.7	90.4	93.2	85.8	89.0
ERNIE-Bot 4.0	90.5	81.7	90.4	91.6	82.4	86.7
ERNIE-Bot	81.8	68.9	80.0	82.3	70.9	76.2
Yi-34B-Chat	77.8	65.7	72.8	78.4	68.4	72.6
GPT 4.0	75.1	64.7	82.0	76.8	63.5	70.6
Yi-6B-Chat	76.1	59.3	71.3	76.2	63.0	68.8
ChatGLM3-6B	64.8	53.4	61.8	66.6	54.6	59.8
Qwen-7B-Chat	65.9	49.5	68.8	63.8	52.9	58.8
Baichuan2-13B-Chat	65.2	44.3	66.5	63.4	48.6	56.1
Baichuan2-7B-Chat	63.5	44.4	62.6	61.9	48.8	55.2
ChatGPT	61.0	46.1	68.9	57.5	49.1	54.6
Educhat-sft-002-13B-Baichuan	60.0	46.2	60.3	56.5	50.9	54.1
Chinese-Alpaca-2-13B	51.1	36.7	54.2	48.3	40.2	44.8
Chinese-LLaMA-2-13B	40.5	29.4	34.7	38.3	34.1	35.7
Educhat-sft-002-13B	39.5	25.1	37.3	36.9	29.7	33.3

Table 10: Zero-shot accuracy of multiple models in answer-only setting.

Model	Arts	Science	Primary	Middle	High	Average
Random	25.0	25.0	25.0	25.0	25.0	25.0
Qwen-72B-Chat	92.6	83.7	88.9	93.1	85.6	88.7
ERNIE-Bot 4.0	91.8	76.6	87.1	88.2	82.7	85.2
Yi-34B-Chat	88.3	72.4	84.8	87.4	76.4	81.4
ERNIE-Bot	82.2	67.3	78.0	80.2	72.0	75.7
GPT 4.0	78.0	68.4	83.0	79.2	67.8	73.8
Yi-6B-Chat	76.5	64.4	72.2	79.1	65.5	71.3
Baichuan2-13B-Chat	68.5	51.2	72.0	67.8	53.6	61.0
Qwen-7B-Chat	68.1	50.5	70.3	67.1	53.5	60.5
ChatGLM3-6B	63.4	54.0	62.2	66.7	53.4	59.3
ChatGPT	63.1	48.9	69.1	61.5	50.8	56.9
Baichuan2-7B-Chat	64.0	46.2	61.3	62.3	50.8	56.3
Chinese-Alpaca-2-13B	53.7	36.6	54.0	50.4	41.5	46.3
Educhat-sft-002-13B	46.3	30.4	44.0	41.0	37.2	39.4
Chinese-LLaMA-2-13B	44.2	31.9	45.9	43.1	34.3	38.9
Educhat-sft-002-13B-Baichuan	15.9	12.5	17.8	18.8	10.6	14.4

Table 11: Five-shot accuracy of multiple models in answer-only setting.

Model	Arts	Science	Primary	Middle	High	Average
Random	25.0	25.0	25.0	25.0	25.0	25.0
Qwen-72B-Chat	92.6	83.8	88.9	93.3	85.7	88.8
ERNIE-Bot 4.0	90.1	77.4	84.6	89.1	81.5	84.6
Yi-34B-Chat	81.2	70.6	81.3	83.7	70.5	76.6
ERNIE-Bot	81.2	68.6	78.0	80.1	72.1	75.7
GPT 4.0	73.2	59.8	80.9	74.5	59.3	67.4
Yi-6B-Chat	71.7	59.9	70.5	73.2	61.0	66.6
Qwen-7B-Chat	68.1	50.3	70.3	66.8	53.6	60.4
Baichuan2-13B-Chat	62.4	48.1	69.4	64.2	47.4	56.2
ChatGLM3-6B	57.9	48.5	56.1	61.8	47.6	53.8
Baichuan2-7B-Chat	59.3	44.5	59.8	59.8	46.4	52.9
ChatGPT	57.5	45.7	67.0	55.7	46.6	52.4
Chinese-Alpaca-2-13B	43.9	32.0	46.2	41.5	35.1	38.8
Educhat-sft-002-13B-Baichuan	44.9	29.3	44.5	40.2	35.2	38.1
Educhat-sft-002-13B	39.9	31.2	38.4	42.0	31.4	36.1
Chinese-LLaMA-2-13B	35.2	30.7	37.3	34.4	31.5	33.2

Table 12: Five-shot accuracy of multiple models in Chain-of-Thought setting.

实验室需配制一种强酸溶液500mL, $c(H^+)=2\text{mol/L}$, 下列配制方法可行的是:

Laboratory needs to prepare a strong acid solution of 500mL, $c(H^+)=2\text{mol/L}$, the feasible preparation method is:

A. 取100mL5mol/L H_2SO_4 , 加入400mL水。

A. Take 100mL of 5mol/L H_2SO_4 , add 400mL of water.

B. 取100mL5mol/L H_2SO_4 , 加水稀释至500mL。

B. Take 100mL of 5mol/L H_2SO_4 , dilute with water to 500mL.

C. 取100mL5mol/LHCl, 加水稀释至500mL。

C. Take 100mL of 5mol/L HCl, dilute with water to 500mL.

D. 取100mL5mol/L HNO_3 , 加水稀释至500mL。

D. Take 100mL of 5mol/L HNO_3 , dilute with water to 500mL.

答案: B

Answer: B

详解: A. 100mL5mol/L H_2SO_4 , 加入400mL水溶液的体积要小于500mL, 无法计算浓度, A不符合题意; B. $c(H^+)=2\text{mol/L}$, B符合题意; C. $c(H^+)=1\text{mol/L}$, C不符合题意; D. $c(H^+)=1\text{mol/L}$, D不符合题意; 故选B。

Explanation: A. The volume of the solution of 100mL 5mol/L H_2SO_4 with 400mL of water is less than 500mL, and the concentration cannot be calculated, so A does not meet the requirements; B. $c(H^+) = 2\text{mol/L}$, B meets the requirements; C. $c(H^+) = 1\text{mol/L}$, C does not meet the requirements; D. $c(H^+) = 1\text{mol/L}$, D does not meet the requirements; Therefore, choose B.

Figure 2: A development example with explanations from E-EVAL. English translations are provided beneath the relevant Chinese text.

以下是中国关于高中生物的单项选择题，请选出其中的正确答案。

The following are multiple-choice questions about biology of high school in China. Please select the correct answer.

人体内含有多种多样的蛋白质，每种蛋白质()。

The human body contains various proteins, and each protein ().

A. 都含有21种氨基酸。

A. Contains 21 types of amino acids.

B. 都是在细胞内发挥作用。

B. Functions within cells.

C. 都能调节生物体的生命活动。

C. Regulates the life activities of organisms.

D. 都具有一定的空间结构。

D. Has a certain spatial structure.

答案: D

Answer: D

...[another 4 examples without explanation]...

下列关于植物激素作用的说法，错误的是()。

Among the following statements about the effects of plant hormones, the incorrect one is ().

A. 种子在即将成熟时遇到高温天气出现“穗上发芽”的现象与脱落酸含量降低有关。

A. The phenomenon of "germination on the ear" when seeds are about to mature in high temperatures is related to the decrease in abscisic acid content.

B. 摘除棉花的顶芽可以促进侧芽的萌发，主要是因为顶芽摘除后侧芽处生长素含量降低。

B. Removing the apical bud of cotton can promote the germination of lateral buds, mainly because the content of auxin at the lateral bud decreases after the apical bud is removed.

C. 啤酒生产中用赤霉素处理大麦种子，可以使大麦在不发芽的状态下就能产生淀粉酶。

C. Treating barley seeds with gibberellin in beer production can allow barley to produce amylase without germination.

D. 生长素浓度升高到一定水平时，会促进乙烯的合成，乙烯又会反过来促进生长素合成。

D. When the concentration of auxin rises to a certain level, it promotes the synthesis of ethylene, and ethylene, in turn, promotes the synthesis of auxin.

答案: D

Answer: D

Figure 3: An example with five-shot-ao from E-EVAL. The red part is the response from model, English translations are provided beneath the relevant Chinese text.

以下是中国关于高中数学的单项选择题，请选出其中的正确答案。

The following are multiple-choice questions about high school mathematics in China. Please select the correct answers.

已知某教学大楼共有四层，每层都有东、西两个楼梯，则从一层到四层不同的走法种数为()。

Given that a teaching building has four floors, each with east and west stairs, the number of different ways to go from the first floor to the fourth floor is ().

- A. 7
- B. 8
- C. 9
- D. 10

答案: 让我们一步一步思考，根据题意，教学大楼共有四层，每层都有东、西两个楼梯，则从一层到二层，有2种走法，同理从二层到三层、从三层到四层也各有2种走法，则从一层到四层共有 $2 \times 2 \times 2 = 8$ 种走法。所以答案是B。

Answer: Let's think step by step. According to the problem, the teaching building has four floors, and each floor has east and west stairs. There are 2 ways to go from the first floor to the second floor, similarly from the second floor to the third floor, and from the third floor to the fourth floor, each having 2 ways. Therefore, the total number of ways from the first floor to the fourth floor is $2 \times 2 \times 2 = 8$, so the answer is B.

... [another 4 examples with explanation] ...

若集合 $A = \{0, 1, 2\}$ ，则A有()个真子集。

If the set $A = \{0, 1, 2\}$, then A has () proper subsets.

- A. 7
- B. 8
- C. 9
- D. 6

答案:

让我们一步一步思考:集合 $A = \{0, 1, 2\}$ 的真子集是指除了集合本身和空集之外的所有可能子集。

1、空集是 A 的真子集。

2、包含一个元素的子集: $\{0\}, \{1\}, \{2\}$ 。

3、包含两个元素的子集: $\{0, 1\}, \{0, 2\}, \{1, 2\}$ 。

4、包含所有元素的子集: $\{0, 1, 2\}$ 。

因此，共有 $2^3 - 1 = 7$ 个真子集，答案是A: 7

Answer:

Let's consider step by step: A set $A = \{0, 1, 2\}$ has subsets, excluding the set itself and the empty set.

1. The empty set is a proper subset of A.

2. Subsets containing one element: $\{0\}, \{1\}, \{2\}$.

3. Subsets containing two elements: $\{0, 1\}, \{0, 2\}, \{1, 2\}$.

4. Subset containing all elements: $\{0, 1, 2\}$.

Therefore, there are $2^3 - 1 = 7$ proper subsets, the answer is A:7

Figure 4: An example with five-shot-cut from E-EVAL. The red part is the response from model, English translations are provided beneath the relevant Chinese text.

以下是中国关于数学考试的单项选择题，请选出其中的正确答案。

四位同学赛跑，丁丁用了106秒，强强用了1分15秒，明明用了92秒，奇奇用了1分50秒。（）跑得最快。

The following is a Chinese multiple choice question about a math test, please choose the correct answer among them.

Four students ran a race, Ding Ding took 106 seconds, Qiang Qiang took 1 minute 15 seconds, Ming Ming took 92 seconds and Qi Qi took 1 minute 50 seconds. () ran the fastest.

A. 丁丁 (Ding Ding)

B. 强强 (Qiang Qiang)

C. 明明 (Ming Ming)

D. 奇奇 (Qi Qi)

答案:

Answer:

Qwen-72B:

首先，我们需要将所有人的跑步时间转换为同一单位。这里可以将所有人的时间都转换为秒。

2. 其次，我们比较每个人的时间，时间最短的人跑得最快。

3. 最后，我们计算出每个人的时间：

- 丁丁：106 秒

- 强强：1 分 15 秒 = 75 秒

- 明明：92 秒

- 奇奇：1 分 50 秒 = 110 秒

综上所述，本题答案选 **C. 明明** ❌

First, we need to convert everyone's running times to the same unit. Here you can convert everyone's time to seconds. \n2. Second, we compare everyone's times. The person with the shortest time runs the fastest. \n3. Finally, we calculate each person's time: \n - Ting Ting: 106 seconds \n - Qiang Qiang: 1 minute 15 seconds = 75 seconds \n - Ming Ming: 92 seconds \n - Qiqiqi: 1 minute 50 seconds = 110 seconds \n\n Summing up, the answer to this question is **C. Ming Ming**. ❌

Ernie-Bot 4.0:

C. 明明。 \n1分=60秒，1分15秒=75秒，1分50秒=110秒，因 $92 < 106 < 110 < 75$ ，所以明明用的时间最少，明明跑的最快。 **故选：C**。 ❌

C. Ming Ming. \n1 minute = 60 seconds, 1 minute 15 seconds = 75 seconds, 1 minute 50 seconds = 110 seconds, since $92 < 106 < 110 < 75$, Ming took the least amount of time and Ming ran the fastest. Therefore, **choose C**. ❌

Yi-34B-chat:

首先，我们需要将所有时间转换为秒，因为所有的计时都需要在同一个单位下进行比较。

丁丁用了106秒。强强用了1分15秒，即60秒 + 15秒 = 75秒。明明用了92秒。奇奇用了1分50秒，即60秒 + 50秒 = 110秒。

现在我们将所有时间都在秒的单位下：

- 丁丁：106秒

- 强强：75秒

- 明明：92秒

- 奇奇：110秒

要找出谁跑得最快，我们需要比较每个人的时间。时间越短，说明他们跑得越快。

从上面的列表中，我们可以看到明明用的时间最短，是92秒。

所以，正确答案是：**C. 明明** ❌

因此，明明跑得最快。

First, we need to convert all times to seconds because all timekeeping needs to be compared under the same unit. \n\n Ding Ding took 106 seconds. \n Strong used 1 minute 15 seconds, i.e. 60 seconds + 15 seconds = 75 seconds. \n Ming Ming used 92 seconds. \n CheeChee took 1 minute 50 seconds, i.e. 60 seconds + 50 seconds = 110 seconds. \n\n Now we have all the times in seconds: \n - TingTintin: 106 seconds \n - Qiangqiang: 75 seconds \n - Mingming: 92 seconds \n - Qiqi: 110 seconds \n\n To find out who ran the fastest, we need to compare the times of each person. The shorter the time, the faster they ran. \n\n From the list above, we can see that Ming Ming took the shortest time, which was 92 seconds. \n\n So, the correct answer is: **C. Ming**. \n\n Therefore, Ming ran the fastest. ❌

Figure 5: A simple primary school math problem with the predictions of the top-3 models.

以下是中国关于数学考试的单项选择题，请选出其中的正确答案。

$a = \log_{0.3} 0.4$, $b = \log_3 4$, $c = 4^{1/3}$ 的大小关系为()。

The following is a Chinese multiple choice question about a math test, please choose the correct answer among them.

The size relationship between $a = \log_{0.3} 0.4$, $b = \log_3 4$, and $c = 4^{1/3}$ is ().

- A. $a < b < c$
- B. $b < a < c$
- C. $a < c < b$
- D. $c < a < b$

答案:

Answer:

Qwen-72B:

首先，我们计算c的值： $c = 4^{1/3} = 2$ 。接着，我们可以根据对数函数的性质判断a和b的范围： $0 < a = \log_{0.3} 0.4 < 1$, $b = \log_3 4 > 1$ 。最后，我们将三个数进行比较： $a < 1 < b < 2 = c$ 。综上所述，本题答案选 **A. $a < b < c$** ✓

First, we calculate the value of c: $c = 4^{1/3} = 2$. Next, we can determine the range of a and b based on the properties of the logarithmic function: $0 < a = \log_{0.3} 0.4 < 1$, $b = \log_3 4 > 1$. Finally, we compare the three numbers: $a < 1 < b < 2 = c$. In summary, the answer to this question is **A. $a < b < c$** ✓

Ernie-Bot 4.0:

A. $a < b < c$.

首先，我们知道对数函数 $\log_a x$ 在 $a > 1$ 时是增函数，在 $0 < a < 1$ 时是减函数。因此， $a = \log_{0.3} 0.4$ 是一个减函数的值，由于 $0.4 > 0.3$ ，所以 $a < 0$ 。

其次，对于 $b = \log_3 4$ ，由于 $4 > 3$ ，所以 $b > 1$ 。

最后，对于 $c = 4^{1/3}$ ，由于 $4 > 1$ ，所以 $c > 1$ 。又因为 $c^3 = 4 < 3^2 = 9$ ，所以 $c < 3^{2/3}$ 。

综合以上三点，我们可以得出 $a < 0 < 1 < b < c < 3^{2/3}$ ，即 $a < b < c$ 。

因此，**正确答案是 A.** ✓

First, we know that the logarithmic function $\log_a x$ is an increasing function at $a > 1$ and a decreasing function at $0 < a < 1$. Therefore,

$a = \log_{0.3} 0.4$ is the value of a decreasing function, and since $0.4 > 0.3$, $a < 0$.

Second, for $b = \log_3 4$, since $4 > 3$, $b > 1$.

Finally, for $c = 4^{1/3}$, since $4 > 1$, $c > 1$. And since $c^3 = 4 < 3^2 = 9$, $c < 3^{2/3}$.

Combining these three points, we can conclude that $a < 0 < 1 < b < c < 3^{2/3}$, which means that $a < b < c$.

Therefore, **the correct answer is A.** ✓

Yi-34B-chat:

为了比较a、b和c的大小关系，我们需要先计算它们的具体值，然后进行比较。

首先，计算对数和分数指数幂：

1. 对于a，我们知道 $\log_{0.3} 0.4 < 0$ ，因为当底数小于1时，对数函数是减函数。

2. 对于b，我们有 $\log_3 4 > 1$ ，因为当底数大于1时，对数函数大于0。

3. 对于c，我们有 $4^{1/3} > 1$ ，因为任何分数指数幂 $x^{1/3}$ 当 $x > 0$ 时都大于1。

现在我们可以比较它们的大小关系：

- 因为 $a < 0$, $b > 1$, 所以 $a < b$ 。

- 因为 $c > 1$, 所以 $b < c$ 。

因此，我们有 $a < b < c$ 。

正确答案是 A. $a < b < c$ ✓

In order to compare the relationship between the sizes of a, b and c, we need to calculate their specific values and then compare them.

First, calculate the logarithmic and fractional exponential powers:

1. for a, we know that $\log_{0.3} 0.4 < 0$ because the logarithmic function is a decreasing function when the base is less than 1.

2. for b, we have $\log_3 4 > 1$ because the logarithmic function is greater than 0 when the base is greater than 1.

3. for c, we have $4^{1/3} > 1$ because any fractional power of exponent $x^{1/3}$ is greater than 1 when $x > 0$.

Now we can compare their magnitudes:

- Since $a < 0$ and $b > 1$, $a < b$.

- Since $c > 1$, $b < c$.

Therefore, we have $a < b < c$.

The correct answer is A. $a < b < c$ ✓

Figure 6: A hard high school math problem with the predictions of the top-3 models.

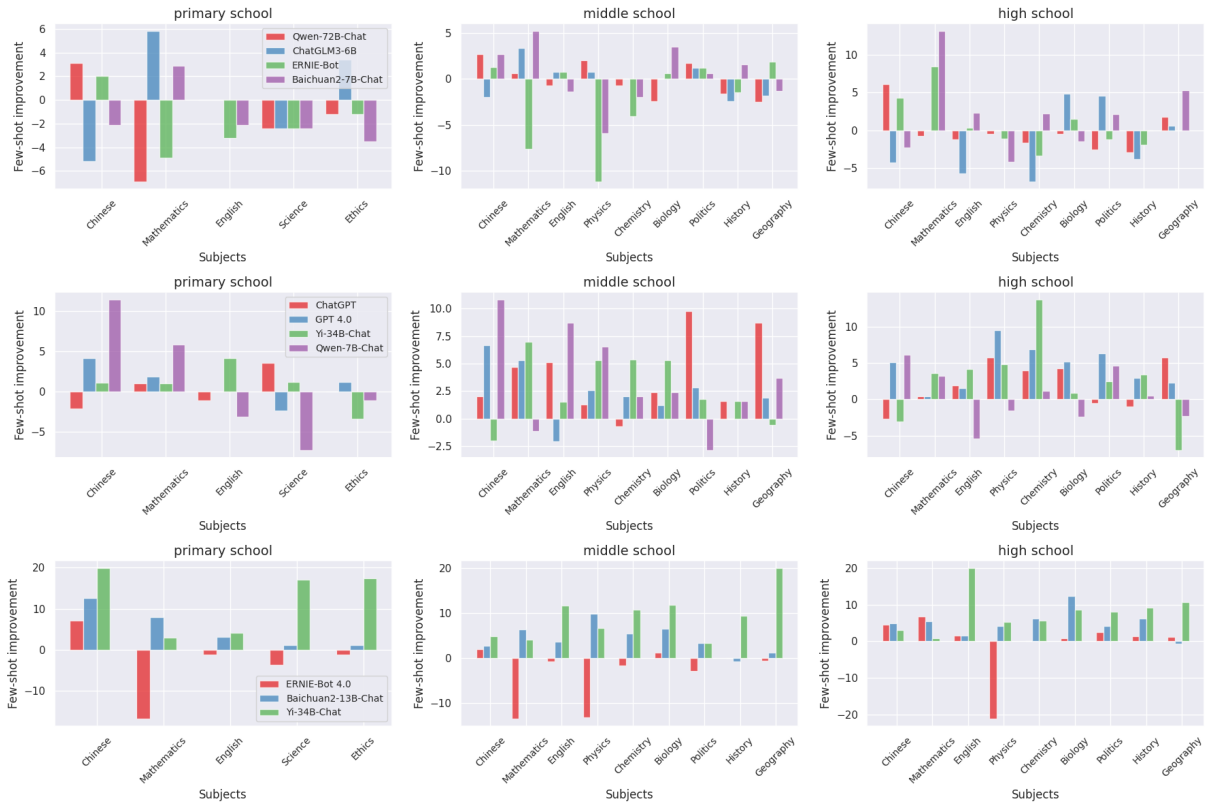


Figure 7: Accuracy improvement from zero-shot-ao to five-shot-ao across 23 subjects.

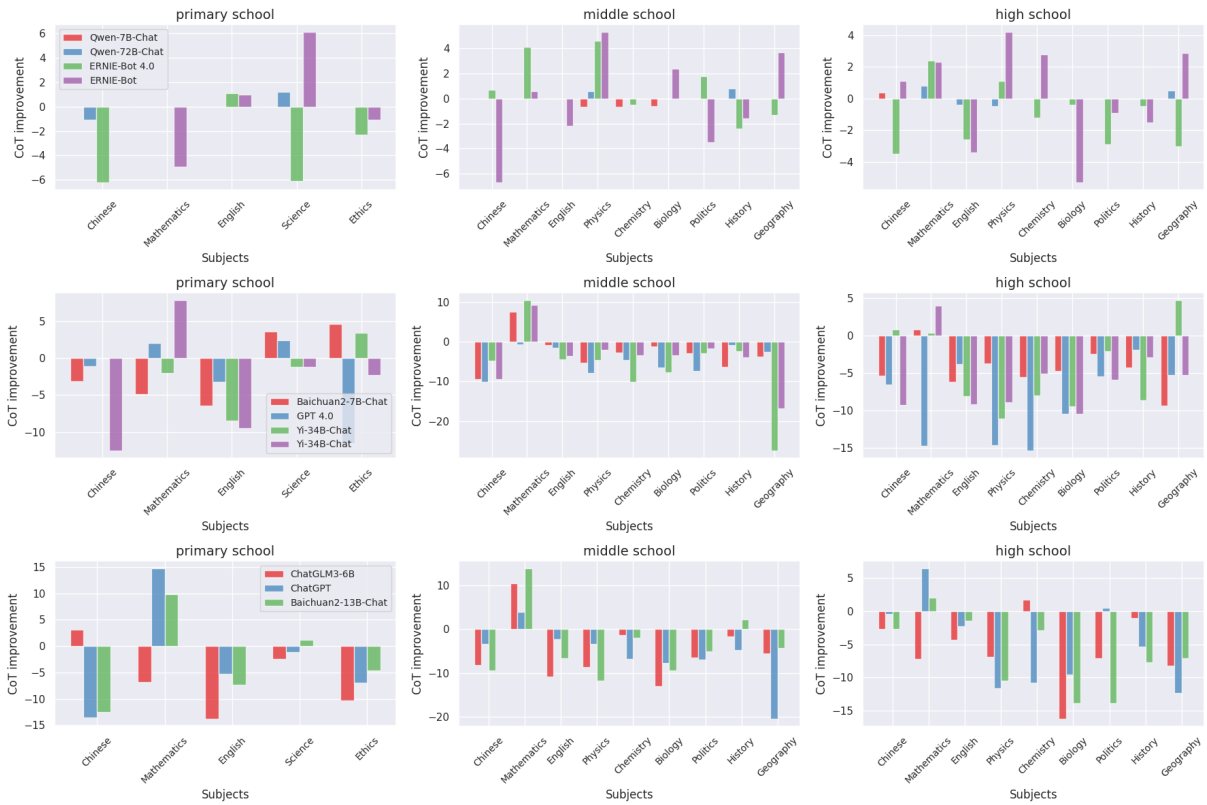


Figure 8: Accuracy improvement from five-shot-ao to five-shot-cot across 23 subjects.