

Evaluation of Sentence Representations in Polish

Ślawomir Dadas, Michał Perelkiewicz, Rafał Poświata

National Information Processing Institute, Warsaw, Poland

{sdadas, mperelkiewicz, rposwiata}@opi.org.pl

Abstract

Methods for learning sentence representations have been actively developed in recent years. However, the lack of pre-trained models and datasets annotated at the sentence level has been a problem for low-resource languages such as Polish which led to less interest in applying these methods to language-specific tasks. In this study, we introduce two new Polish datasets for evaluating sentence embeddings and provide a comprehensive evaluation of eight sentence representation methods including Polish and multilingual models. We consider classic word embedding models, recently developed contextual embeddings and multilingual sentence encoders, showing strengths and weaknesses of specific approaches. We also examine different methods of aggregating word vectors into a single sentence vector.

Keywords: sentence embedding, word embedding, polish language

1. Introduction

In recent years, advances in representation learning for text have led to significant breakthroughs in the field of natural language processing (NLP). Word embeddings have been used with particular success in many linguistic tasks such as text classification, sequence tagging or machine translation. Despite the wide adoption of word representations, especially in combination with deep learning architectures, some tasks require encoding larger chunks of text: sentences, paragraphs or documents. Information retrieval and plagiarism detection are common examples of problems that deal with longer texts and demand efficient methods of comparing or searching in large collections of documents. For this reason, there is an interest in the development of sentence and document embeddings.

1.1. Related work

A straightforward and commonly used method for representing sentences is to aggregate the representations of words making up a sentence into a single vector. In this approach, existing word embedding methods can be used as a source of word vectors. Originally, the most popular choices for word embeddings were Word2Vec (Mikolov et al., 2013a; Mikolov et al., 2013b), GloVe (Pennington et al., 2014) or FastText (Bojanowski et al., 2017). More recently, it has been shown that neural language models trained on large corpora can be used to generate contextualized word representations that outperform static word embeddings in multiple linguistic tasks. Notable examples of such models include ELMo (Peters et al., 2018), BERT (Devlin et al., 2019), Flair (Akbić et al., 2018), ERNIE (Zhang et al., 2019), XLNet (Yang et al., 2019b). The sequence of word vectors is usually transformed into a single sentence vector using Bag-of-Words (BoW) approach by computing an arithmetic or weighted mean but more complex approaches have been explored as well. Arora et al. (2017) proposed a method known as *Smooth Inverse Frequency (SIF)* which consisted of weighting word vectors and removing the projection of first principal component from the resulting matrix of sentences. Shen et al. (2018) performed an analysis of different aggregation techniques for word vectors

and showed that concatenating mean and max pooled vector from the sequence of words might improve performance on some downstream tasks.

Another group of methods uses a more direct approach to building sentence representations by employing sentence level optimization objectives. It usually involves training an encoder-decoder neural network where the encoder is a component responsible for generating the resulting sentence embeddings. Skip-Thought vectors (Kiros et al., 2015) is one of the first popular architectures of this type. It is a self-supervised model that given a sentence representation, tries to reconstruct the previous and the next sentence in a text document. This idea was later improved by other self-supervised models (Gan et al., 2017; Logeswaran and Lee, 2018). Some sentence encoders such as Universal Sentence Encoder (Cer et al., 2018) or InferSent (Conneau et al., 2017) are trained in a supervised way using Stanford Natural Language Inference (SNLI) - large manually annotated corpus of English sentence pairs. Other methods try to learn multilingual sentence representations by machine translation, using datasets of aligned sentence pairs in different languages (Schwenk and Douze, 2017; Artetxe and Schwenk, 2018). Availability of large multilingual corpora and recent improvements in automatic parallel corpus mining methods allowed to train models capable of encoding sentences in many, even low-resource, languages. LASER encoder introduced by Artetxe and Schwenk (2018) can handle 93 languages, recently released multilingual version of Universal Sentence Encoder (Yang et al., 2019a) supports 16 languages.

With the development of sentence representation methods, more datasets and tools for their evaluation started to appear. There are already several studies analyzing performance and linguistic properties of sentence representations in English (Adi et al., 2017; Conneau and Kiela, 2018; Perone et al., 2018; Zhu et al., 2018). Recently published study (Krasnowska-Kieraś and Wróblewska, 2019) has aimed to investigate retention of linguistic information in sentence embeddings for English and Polish languages by means of probing methods and downstream tasks. This study shows that correlation between results for Polish and En-

glish are high for most of the downstream tasks and probing methods. However, for low-resource languages like Polish, shortage of datasets, tools and pre-trained models is a major obstacle to the analogous studies and there is still a need for a thorough research. Initiatives such as Cross-Lingual NLI Corpus (XNLI) (Conneau et al., 2018) are welcomed but we still need more language-specific data in order to perform the evaluation of sentence embeddings for low-resource languages. In this study, we present two new sentence level datasets in Polish and evaluate a number of sentence embedding methods on five tasks including topic classification, sentiment analysis in two domains, textual entailment and relatedness. We hope that this work will reduce the gap between Polish and English in research concerning sentence representations.

1.2. Contributions

Our contributions are the following:

1. We perform a systematic evaluation of several sentence representation methods on five downstream tasks in Polish. The evaluation includes methods based on the aggregation of word vectors, contextual embeddings from language models and multilingual sentence encoders.
2. We share a manually translated version of SICK (Sentences Involving Compositional Knowledge) dataset, containing 10,000 pairs of sentences annotated with textual entailment labels and semantic relatedness scores.
3. We share an automatically extracted dataset (8TAGS) of almost 50,000 sentences relating to 8 topics such as food, sport or medicine.
4. We provide a tool based on SentEval evaluation toolkit by Conneau and Kiela (2018), adapted to support Polish models and datasets. We make the source code¹ available, as well as all pre-trained models² used in this study: Polish Word2Vec, GloVe, FastText and ELMo.

2. Methodology

In this section, we describe datasets, tasks, and sentence embedding methods included in this study. First, we present three datasets, two of which have been prepared by us for this evaluation. Next, we provide a summary of sentence representation methods and our model pre-training procedure.

2.1. Description of datasets and tasks

Wroclaw Corpus of Consumer Reviews Sentiment (WCCRS) A corpus created by Wroclaw University of Science and Technology consisting of text annotated with sentiment labels (Kocoń et al., 2019). This dataset contains consumer reviews relating to four domains: hotels, medical services, products and education. Data for all domains was annotated at the document level and two domains - hotels and medical services - were additionally annotated at the

sentence level. We use those two domains in our sentence evaluation experiments as a multiclass sentiment classification tasks: *WCCRS Hotels* and *WCCRS Medicine*. In both cases, each sentence is assigned to one of four classes: *positive*, *negative*, *neutral* or *ambiguous*. We report classification accuracy for both tasks.

Sentences Involving Compositional Knowledge (SICK)

This dataset is a manually translated version of popular English natural language inference (NLI) corpus consisting of 10,000 sentence pairs (Marelli et al., 2014). NLI is the task of determining whether one statement (premise) semantically entails other statement (hypothesis). Such relation can be classified as *entailment* (if the first sentence entails second sentence), *neutral* (the first statement does not determine the truth value of the second statement) or *contradiction* (if the first sentence is true, the second is false). Additionally, the original SICK dataset contains semantic relatedness scores for the sentence pairs as real numbers ranging from 1 to 5. When translating the corpus to Polish, we tried to be as close as possible to the original meaning. In some cases, however, two different English sentences had an identical translation in Polish. Such instances were slightly modified in order to preserve both the meaning and the syntactic differences in sentence pair. For evaluation of sentence representations on SICK, we follow the usual approach used for English. We add textual entailment task (*SICK-E*) as a multiclass classification problem, reporting the classification accuracy. For semantic relatedness (*SICK-R*), we learn a model that tries to predict the probability distribution of relatedness scores, as in Conneau and Kiela (2018). For this task, a Pearson correlation between predicted and original scores is reported.

8TAGS A corpus created specifically for this study as a more challenging example of sentence classification. It contains about 50,000 sentences annotated with 8 topic labels: *film*, *history*, *food*, *medicine*, *motorization*, *work*, *sport* and *technology*. This dataset was created automatically by extracting sentences from headlines and short descriptions of articles posted on Polish social networking site *wykop.pl*. The service allows users to annotate articles with one or more tags (categories). Dataset represents a selection of article sentences from 8 popular categories. The resulting corpus contains cleaned and tokenized, unambiguous sentences (tagged with only one of the selected categories), and longer than 30 characters. For this task, classification accuracy is reported.

2.2. Methods

The evaluation was conducted on eight word and sentence representation methods. Models for four of them (Word2Vec, GloVe, FastText, ELMo) were pre-trained by us on a large corpus of Polish consisting of Polish Wikipedia and a collection of Polish books and articles, 1.5 billion tokens in total. For other methods, we used already pre-trained and publicly available models. In the case of static word embedding models (Word2Vec, GloVe, FastText) we used the same hyperparameters and training procedure. The dimensionality of vectors has been set to 300. The vocabulary contained only lemmatized words with 3 or more occurrences in the corpus plus all numbers from 0 to

¹<https://github.com/sdadas/polish-sentence-evaluation>

²<https://github.com/sdadas/polish-nlp-resources>

10,000 and a set of pre-defined Polish forenames and last names. In the case of ELMo, we used the same hyperparameters as Peters et al. (2018) for the model with 4096 hidden units which was trained for 10 epochs.

For other models, we utilized the following pre-trained versions: 1) For Flair, *pl-forward* and *pl-backward* models available in the library were used. 2) For BERT, we used the official BERT Multilingual Cased model. 3) In the case of Universal Sentence Encoder, we used *universal-sentence-encoder-multilingual-large* version from TensorFlow Hub. 4) For LASER, we used the official model from Facebook.

2.2.1. Word embeddings

In this section, we describe methods based on static word embeddings. The final sentence vector is computed as an arithmetic mean of all vectors in the sentence. It is important to note that training word embedding models such as Word2Vec does not produce word vectors normalized to unit length. This is usually not a problem for word based tasks but we noticed that it does affect the performance in our case where we expect each word in the sentence to contribute equally to the resulting sentence vector. Therefore, we normalize all vectors to unit length before computing the mean.

Random baseline We compare the performance of other models to a simple baseline which is a word embedding model initialized with random vectors. In this method, each word in the vocabulary has randomly generated representation that does not encode any meaningful semantic information.

Word2Vec A model described in Mikolov et al. (2013a) is one of the first successful applications of neural networks for generating distributed word representations. The model learns a semantic relationship between words in a fixed length context window. The paper proposed two different methods of training the model: skip-gram (predicting context words given target word) and continuous bag-of-words (predicting target word given its context). The original paper and a follow-up paper (Mikolov et al., 2013b) describe two efficient methods for computing training loss: negative sampling and hierarchical softmax. In this study, we evaluate the most commonly used version of Word2Vec - skip-gram with negative sampling.

GloVe Global Vectors (Pennington et al., 2014) is a count based method for learning word embeddings. It works by constructing a matrix of weighted co-occurrences of words in a fixed context and then learns to estimate the co-occurrence scores from the dot product of word vectors.

FastText A model proposed by Bojanowski et al. (2017) is an extension of Word2Vec (Mikolov et al., 2013a). The idea of FastText is to jointly learn the representation of words and sub-word units defined as a set of fixed lengths character n-grams. In this model, the resulting embedding is defined as a sum of the original word vector and all n-gram vectors for this word. One interesting property of this model is the ability to estimate representations for out-of-vocabulary (OOV) words by combining their n-gram embeddings.

2.2.2. Contextual word representations

In this section, we describe methods for generating contextual word representations. This is an active area of research and all of the following approaches have been introduced only recently. Such approaches base on pre-training neural language model on a large text corpus. Hidden states of this neural model can be then used as word representations. These models often have many parameters which makes them computationally more expensive than using static word embeddings. For evaluation, we use the same approach to building sentence vector as in the case of static word embeddings: we compute a mean of all generated word representations in a given sentence.

ELMo Embeddings from Language Models is a deep learning architecture introduced by Peters et al. (2018). It is a language model with a character input utilizing three bidirectional LSTM layers. First layer is responsible for generating context independent representation of a word from its characters, next two layers are used for encoding word based contextual information. Authors suggest that using hidden states of all three layers as a word representation can be beneficial for some downstream tasks compared to using only the last layer. Following this advice, we evaluate two versions of ELMo embeddings: one using only the hidden state of the top layer and other using a concatenation of all three hidden states.

Flair A simple character based language model proposed by Akbik et al. (2018) which proved to be especially effective for sequence annotation tasks such as part-of-speech tagging or named entity recognition. Despite the fact that the model is fully character based, the authors use hidden states of the last LSTM layer at every white space position after each word as a representation for this word. To support bidirectionality, a separate backward language model is trained. For our experiments, we concatenate the outputs of forward and backward models to build the final word representation.

BERT Bidirectional Encoder Representations (Devlin et al., 2019) from Transformers is a model using the transformer architecture which was previously applied in sequence to sequence tasks. BERT, unlike traditional language models, is trained with two objectives: predicting missing words in a sentence and predicting whether one sentence comes after the other.

2.2.3. Sentence encoders

Our evaluation includes two pre-trained multilingual sentence encoders supporting Polish language. In this section, we briefly describe those models.

LASER Language-Agnostic SEntence Representations (Artetxe and Schwenk, 2018) is a multi-lingual sentence encoder architecture that learns sentence vectors by translating sentences from the source language to two target languages. The available pre-trained model supports 93 languages including Polish, and has been trained on a parallel corpus of 223 million sentences.

USE Universal Sentence Encoder was first presented in Cer et al. (2018). It uses a transformer architecture and the

Method	Language	WCCRS Hotels	WCCRS Medicine	SICK-E	SICK-R [†]	8TAGS
Word embeddings						
Random	N/A	65.83	60.64	72.77	0.628	31.95
Word2Vec	Polish	78.19	73.23	75.42	0.746	70.27
GloVe	Polish	80.05	72.54	73.81	0.756	69.78
FastText	Polish	80.31	72.64	75.19	0.729	69.24
Language models						
ELMo (all)	Polish	85.52	78.42	77.15	0.789	71.41
ELMo (top)	Polish	83.20	78.17	74.05	0.756	71.41
Flair	Polish	80.82	75.46	78.43	0.743	65.62
BERT	Multilingual	76.83	72.54	73.83	0.698	65.05
Sentence encoders						
LASER	Multilingual	81.21	78.17	82.21	0.825	64.91
USE	Multilingual	79.47	73.78	82.14	0.833	69.92

Table 1: Evaluation of sentence representations on four classification tasks and one semantic relatedness task (*SICK-R*). For classification, we report accuracy of each model. BERT, LASER and USE are multilingual models, other models are Polish only. [†] For semantic relatedness (*SICK-R*), Pearson correlation between true and predicted relatedness scores is reported.

training procedure involves multi-task objectives that include both self-supervised and fully supervised tasks. First publicly available pre-trained models were English only but recently a multilingual version of USE supporting 16 languages including Polish (Yang et al., 2019a) has been made available.

3. Experiments

In this section, we demonstrate the experimental results of sentence representation methods in Polish on downstream linguistic tasks. First, we discuss the results of unaltered versions of all the methods. Next, we demonstrate the effect of two aggregation techniques on word embedding models and discuss the performance impact of vector dimensionality.

3.1. Evaluation of sentence representations

Table 1 shows accuracy scores for four multiclass classification tasks (*WCCRS Hotels*, *WCCRS Medicine*, *SICK-E*, *8TAGS*) and Pearson correlation for semantic relatedness task (*SICK-R*). These results were obtained by training a neural network for 10 epochs with a sentence vector as an input, a single hidden layer of 50 units and softmax output layer. The exception was again *SICK-R* task where the continuous relatedness score was transformed to a probability distribution of relatedness values and the network input was a concatenation of the difference of sentence vectors and their dot product. This approach was compatible with other evaluation studies for *SICK-R* task in English.

Although there is no method with top performance in every task, there are three methods with strong results for more than half them. ELMo outperforms every other approach on three classification problems. This is an impressive result given that ELMo is not a typical sentence encoder and has been trained on word level objective. This allows us to believe that a sequential model based on ELMo (e.g.

network with LSTM layer and attention or pooling mechanism) would achieve even better results for those tasks. On the other hand, we can see a clear performance difference between word level models and multilingual sentence encoders on *SICK* dataset, for natural language inference and semantic relatedness tasks. Both USE and LASER show a comparable performance, almost 5% better than any word based model. For classification, we cannot decide which encoder is better. While LASER clearly outperforms USE in sentiment classification, it also clearly loses in topic classification.

Performance of multilingual BERT model in Polish is below our expectations as it is worse than Polish static word embedding models. While multilingual model is more universal than language-specific model, it seems that the price for multilingualism is quite high in the case of BERT. Polish Flair model achieves reasonable results, being ranked just above word embedding models and below ELMo for most tasks. It even gets the best result in *SICK-E* task among all language models.

Word embedding models are close to each other without an evident winner. They can be used as a strong baseline and for the evaluated tasks their performance is not far from more computationally expensive language models.

3.2. Evaluation of word embedding aggregation techniques and dimensionality

In the previous subsection, we compared the performance of various sentence representation methods, using an arithmetic mean to transform a sequence of word vectors into a single sentence vector. In this section, we examine two more advanced approaches to computing sentence representation from word vectors. First one, known as *Smooth Inverse Frequency (SIF)* by Arora et al. (2017). It works by computing a weighted average of vectors with weights equal to $\frac{a}{a+p(w)}$, where a is a smoothing parameter and $p(w)$ is a probability of the word, estimated as the fre-

Method	WCCRS Hotels	WCCRS Medicine	SICK-E	SICK-R [†]	8TAGS
Word2Vec					
Baseline	78.19	73.23	75.42	0.746	70.27
SIF	77.22	70.37	72.04	0.729	71.32
Max Pooling	79.86	72.64	79.47	0.792	69.85
GloVe					
Baseline	80.05	72.54	73.81	0.756	69.78
SIF	80.24	72.05	72.38	0.758	69.83
Max Pooling	78.25	73.68	77.56	0.786	69.42
FastText					
Baseline	80.31	72.64	75.19	0.729	69.24
SIF	78.51	70.47	65.39	0.721	70.08
Max Pooling	80.18	72.10	78.50	0.785	68.41

Table 2: Evaluation of aggregation techniques for word based sentence representations with fixed vector dimensionality (300). Baseline model uses simple averaging, *SIF* is a method proposed by Arora et al. (2017), *Max Pooling* is a concatenation of arithmetic mean and max pooled vector from word embeddings. For classification, we report accuracy of each model. [†] For semantic relatedness (*SICK-R*), Pearson correlation between true and predicted relatedness scores is reported.

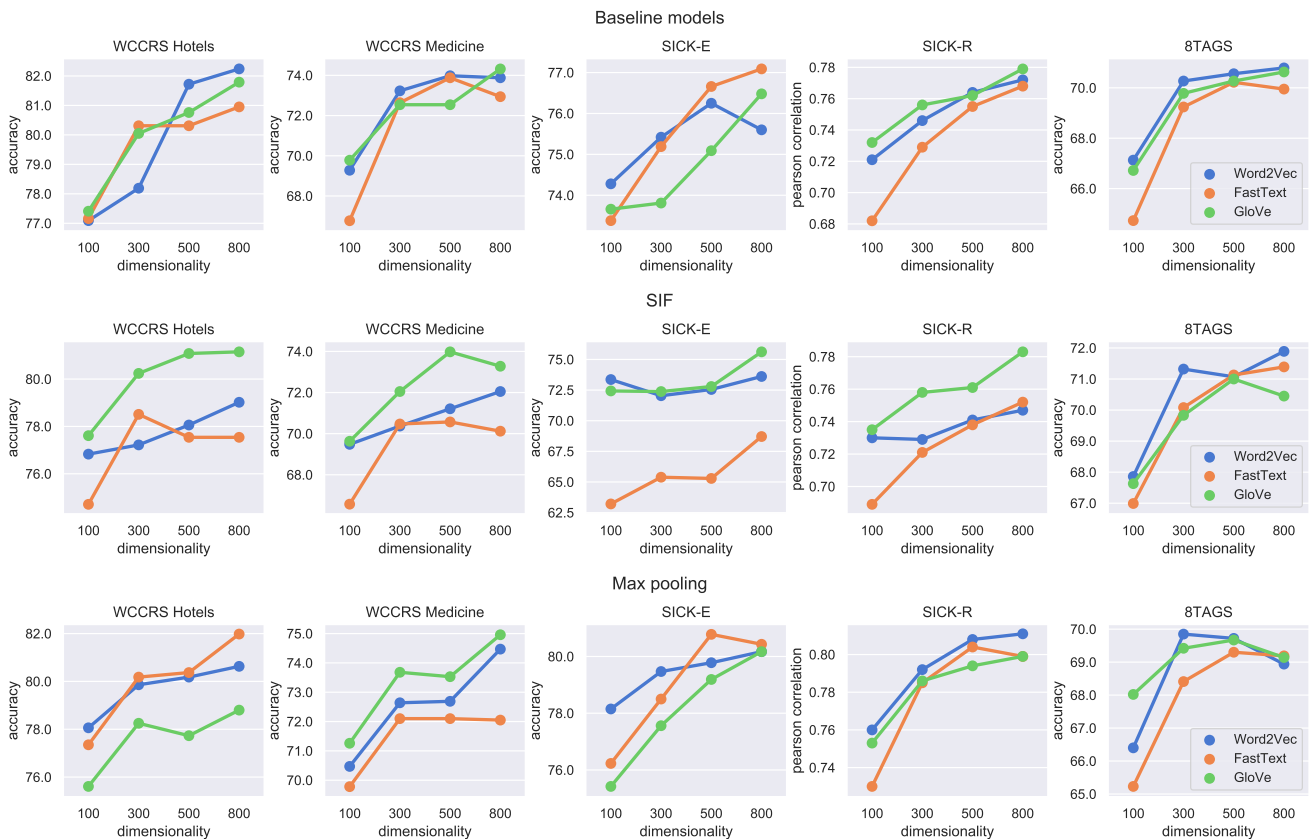


Figure 1: Evaluation of aggregation techniques for word embedding models with different dimensionalities. Baseline models use simple averaging, *SIF* is a method proposed by Arora et al. (2017), *Max Pooling* is a concatenation of arithmetic mean and max pooled vector from word embeddings.

quency of the word in a corpus divided by the total number of tokens in this corpus. Then, a matrix of sentence embeddings is created and the first principal component of the resulting matrix is subtracted from it (*common component removal*). The second evaluated method, described in

Shen et al. (2018), involves concatenating simple average of word vectors and max pooled representation from the sequence of those vectors.

Table 2 shows results of this experiment on classic word embedding models. Baseline is the same as in the previ-

ous experiment. We can see that the effect of applying *SIF* method is not clearly beneficial. The performance is similar to the baseline model with small gains for some tasks and small losses for others. The authors of *SIF* demonstrated that the method might improve semantic similarity of word vectors but it seems that there are no improvements for other tasks, at least in Polish. *Max pooling*, however, turned out to be beneficial for some problems. For each of the evaluated models, concatenating max pooled vector resulted in performance comparable to the baselines on classification tasks and significant improvements for tasks based on *SICK* dataset, with gains of 3% to 5%.

We also studied the impact of the aforementioned aggregation techniques for word based models with different dimensionalities. In this experiment, we trained static word embeddings (Word2Vec, GloVe and FastText) with vector sizes of 100, 300, 500 and 800. Figure 1 illustrates the performance of the baseline models as well as *SIF* and *max pooling* methods. We can see that simply increasing the size of the vector can improve accuracy. The largest models in their baseline versions turned out to almost as effective as ELMo on *SICK-E*, *SICK-R* and *8TAGS* tasks. They also outperformed USE and LASER on *WCCRS Hotels* and *8TAGS*. This outcome is understandable as the more dimensions a word vector has, the more semantic information can be preserved in the resulting sentence representation. It is surprising, however, how close can these simple models get to the more sophisticated language models or sentence encoders.

The effect of applying *SIF* and *max pooling* is consistent with the previous experiment. Again, we see no clear improvement with *SIF*. Application of *max pooling* technique has a positive impact on *SICK-E* and *SICK-R* tasks, although it is more evident for smaller vectors. While this effect is partially mitigated in higher dimensions, the performance of the best word based model with *max pooling* is just 1% below multilingual sentence encoders on *SICK*. Therefore, we can conclude that using a sufficiently highly dimensional word embedding model with *max pooling* provides a strong baseline for sentence representations which is hard to beat even by the recent state-of-the-art methods.

4. Conclusion

In this study, we provided an experimental evaluation of sentence embedding methods for Polish on five linguistic tasks. We presented a comparison of three groups of methods: static word embeddings, contextual embeddings from language models and sentence encoders. We also examined two recently introduced methods for aggregating word vectors into a sentence vector. In order to accelerate research in Polish natural language processing, we make the source code for our experiments, our datasets and pre-trained models public.

5. Bibliographical References

Adi, Y., Kermany, E., Belinkov, Y., Lavi, O., and Goldberg, Y. (2017). Fine-grained analysis of sentence embeddings using auxiliary prediction tasks. *International Conference on Learning Representations*.

Akbik, A., Blythe, D., and Vollgraf, R. (2018). Contextual string embeddings for sequence labeling. In *COLING 2018: 27th International Conference on Computational Linguistics*, pages 1638–1649. International Conference on Computational Linguistics.

Arora, S., Liang, Y., and Ma, T. (2017). A simple but tough-to-beat baseline for sentence embeddings. In *ICLR 2017: International Conference on Learning Representations 2017*. International Conference on Learning Representations.

Artetxe, M. and Schwenk, H. (2018). Massively multilingual sentence embeddings for zero-shot cross-lingual transfer and beyond. *arXiv preprint arXiv:1812.10464*.

Bojanowski, P., Grave, E., Joulin, A., and Mikolov, T. (2017). Enriching word vectors with subword information. *Transactions of the Association for Computational Linguistics*, pages 135–146.

Cer, D., Yang, Y., Kong, S.-y., Hua, N., Limtiaco, N. L. U., John, R. S., Constant, N., Guajardo-Céspedes, M., Yuan, S., Tar, C., Sung, Y.-h., Strope, B., and Kurzweil, R. (2018). Universal sentence encoder. *arXiv preprint arXiv:1803.11175*.

Conneau, A. and Kiela, D. (2018). Senteval: An evaluation toolkit for universal sentence representations. *Language Resources and Evaluation*.

Conneau, A., Kiela, D., Schwenk, H., Barrault, L., and Bordes, A. (2017). Supervised learning of universal sentence representations from natural language inference data. In *Proceedings of the 2017 Conference on Empirical Methods in Natural Language Processing*, pages 670–680. Empirical Methods in Natural Language Processing.

Conneau, A., Rinott, R., Lample, G., Williams, A., Bowman, S. R., Schwenk, H., and Stoyanov, V. (2018). Xnli: Evaluating cross-lingual sentence representations. *Empirical Methods in Natural Language Processing*, pages 2475–2485.

Devlin, J., Chang, M.-W., Lee, K., and Toutanova, K. (2019). Bert: Pre-training of deep bidirectional transformers for language understanding. *North American Chapter of the Association for Computational Linguistics*.

Gan, Z., Pu, Y., Heno, R., Li, C., He, X., and Carin, L. (2017). Learning generic sentence representations using convolutional neural networks. In *Proceedings of the 2017 Conference on Empirical Methods in Natural Language Processing*, pages 2390–2400. Empirical Methods in Natural Language Processing.

Kiros, R., Zhu, Y., Salakhutdinov, R. R., Zemel, R. S., Torralba, A., Urtasun, R., and Fidler, S. (2015). Skip-thought vectors. *Neural Information Processing Systems*, pages 3294–3302.

Kocóń, J., Zaśko-Zielińska, M., and Miłkowski, P. (2019). Multi-level analysis and recognition of the text sentiment on the example of consumer opinions. In *Proceedings of the International Conference Recent Advances in Natural Language Processing, RANLP 2019*.

Krasnowska-Kieraś, K. and Wróblewska, A. (2019). Empirical linguistic study of sentence embeddings. In *Pro-*

- ceedings of the 57th Annual Meeting of the Association for Computational Linguistics*, pages 5729–5739, Florence, Italy, July. Association for Computational Linguistics.
- Logeswaran, L. and Lee, H. (2018). An efficient framework for learning sentence representations. *International Conference on Learning Representations*.
- Marelli, M., Menini, S., Baroni, M., Bentivogli, L., bernardi, R., and Zamparelli, R. (2014). A sick cure for the evaluation of compositional distributional semantic models. In *Proceedings of the Ninth International Conference on Language Resources and Evaluation (LREC'14)*, pages 216–223. Language Resources and Evaluation.
- Mikolov, T., Chen, K., Corrado, G. S., and Dean, J. (2013a). Efficient estimation of word representations in vector space. *International Conference on Learning Representations*.
- Mikolov, T., Sutskever, I., Chen, K., Corrado, G. S., and Dean, J. (2013b). Distributed representations of words and phrases and their compositionality. *Neural Information Processing Systems*, pages 3111–3119.
- Pennington, J., Socher, R., and Manning, C. D. (2014). Glove: Global vectors for word representation. In *Proceedings of the 2014 Conference on Empirical Methods in Natural Language Processing (EMNLP)*, pages 1532–1543. Empirical Methods in Natural Language Processing.
- Perone, C. S., Silveira, R., and Paula, T. S. (2018). Evaluation of sentence embeddings in downstream and linguistic probing tasks.
- Peters, M. E., Neumann, M., Iyyer, M., Gardner, M., Clark, C., Lee, K., and Zettlemoyer, L. S. (2018). Deep contextualized word representations. In *NAACL HLT 2018: 16th Annual Conference of the North American Chapter of the Association for Computational Linguistics: Human Language Technologies*, pages 2227–2237. North American Chapter of the Association for Computational Linguistics.
- Schwenk, H. and Douze, M. (2017). Learning joint multilingual sentence representations with neural machine translation. In *Proceedings of the 2nd Workshop on Representation Learning for NLP*, pages 157–167. Meeting of the Association for Computational Linguistics.
- Shen, D., Wang, G., Wang, W., Min, M. R., Su, Q., Zhang, Y., Li, C., Henao, R., and Carin, L. (2018). Baseline needs more love: On simple word-embedding-based models and associated pooling mechanisms. *Meeting of the Association for Computational Linguistics*, pages 440–450.
- Yang, Y., Cer, D., Ahmad, A., Guo, M., Law, J., Constant, N., Abrego, G. H., Yuan, S., Tar, C., Sung, Y.-H., Strope, B., and Kurzweil, R. (2019a). Multilingual universal sentence encoder for semantic retrieval.
- Yang, Z., Dai, Z., Yang, Y., Carbonell, J., Salakhutdinov, R., and Le, Q. V. (2019b). Xlnet: Generalized autoregressive pretraining for language understanding.
- Zhang, Z., Han, X., Liu, Z., Jiang, X., Sun, M., and Liu, Q. (2019). Ernie: Enhanced language representation with informative entities. *arXiv preprint arXiv:1905.07129*.
- Zhu, X., Li, T., and Melo, G. d. (2018). Exploring semantic properties of sentence embeddings. In *ACL 2018: 56th Annual Meeting of the Association for Computational Linguistics*, pages 632–637. Meeting of the Association for Computational Linguistics.