

metAMoRphosED: a graphical editor for Abstract Meaning Representation

Johannes Heinecke

Orange Innovation

2 avenue Pierre Marzin

F-22300 Lannion

johannes.heinecke@orange.com

Abstract

This paper presents a graphical editor for directed graphs, serialised in the PENMAN format, as used for annotations in Abstract Meaning Representation (AMR). The tool supports creation and modification of AMR graphs and other directed graphs, addition and deletion of instances, edges and literals, renaming of concepts, relations and literals, setting a “top node” and validation of the edited graph.

1 Introduction

Abstract Meaning Representation (AMR) is a semantic representation language designed to formalise the meaning of sentences or a set of sentences (Banarescu et al., 2013)¹. Its motivation is to annotate semantic information like named entities, coreferences, word senses, semantic relations etc. However, it does not annotate meaning of natural language at the same degree as more complex frameworks such as the Discourse Representation Theory (Kamp and Reyle, 1993), as it does not mark number, semantic time, mode etc. Even though AMR has been explicitly devised for English and must not be considered as an interlingua, AMR is increasingly used to annotate sentences in languages other than English (Damonte and Cohen, 2018; Biloshmi et al., 2020; Uhrig et al., 2021; Heinecke and Shimorina, 2022). AMR graphs are directed graphs which contain concepts, instances, literals and labelled edges between instances and literals.

AMR uses concepts from PropBank (Kingsbury and Palmer, 2002; Palmer et al., 2005) where available (mainly verbal concepts), e.g., *bear-02* in figure 1, PropBank sense 2 for *bear*. Instances are indicated by a following “/”, e.g., *p* being an instance of the concept *person*. *:ARG1* etc. mark relations. Literals (strings and numbers) lack an

```
(b / bear-02
  :ARG1 (p / person
    :name (n / name
      :op1 "Queen"
      :op2 "Elizabeth"))
  :time (d / date-entity
    :year 1926))
```

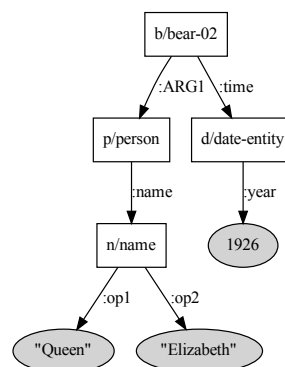


Figure 1: AMR graph for “Queen Elizabeth was born in 1926” in PENMAN format (above) and graphical visualisation

preceding instance and “/” (c.f., “Queen” and 1926 in the example in figure 1).

AMR data is available at the Linguistic Data Consortium (LDC) for English 2 :

- LDC2020T02: LDC general release AMR 3.0 (2020), with 59,255 sentences;
- LDC2017T10: LDC general release AMR 2.0 (2017), with 39,260 sentences.

The sentences of the test corpus of AMR 2.0 were translated by human translators into four languages (LDC2020T07: AMR 2.0, four translations of AMR 2.0 test set into Italian, Spanish, German, Chinese, 1371 sentences per language).²

¹See also the project web site <https://amr.isi.edu>

²Corpora available at <https://amr.isi.edu/download.html>

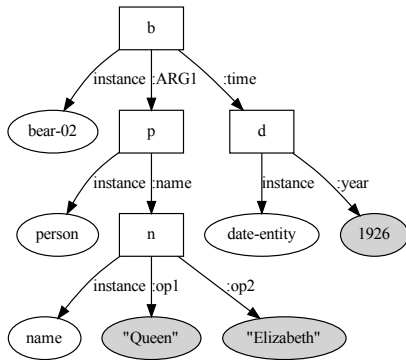


Figure 2: AMR graph of figure 1 with instances explicitly visualised

```
# ::id lpp_1943.293 ::date 2012-11-18...
# ::snt I answered , "eats anything ...
# ::save-date Thu Apr 18, 2013 ...
(a / answer-01
 :ARG0 (i / i)
 :ARG1 (e / eat-01
 :ARG1-of (f / find-01
 :ARG0 (i2 / it)
 :location (r / reach-03
 :ARG0 i2))))))

# ::id lpp_1943.294 ::date 2012-11-18...
# ::snt "Even flowers that have thorns ?"
# ::save-date Thu Oct 29, 2015 ...
(f / flower :mode interrogative
 :mod (e / even)
 :ARG0-of (h / have-03
 :ARG1 (t / thorn)))
```

Figure 3: Example of two sentences (slightly truncated for place reasons) in an AMR file (taken from *The Little Prince* corpus, available at the AMR project website)

Nearly all available annotated AMR corpora use the PENMAN graph serialisation format (Kaspar, 1989; shown in figure 1 together with a graphical representation where instances and concepts are shown in one rectangle for better readability, the full visualisation of figure 1 would be the visualisation in figure 2).

In addition to the PENMAN serialisation, typical AMR files contain some metadata too: the sentence itself, translations, a unique sentence identification, annotator identification, saving date, named entities, etc, e.g., figure 3.

Since the AMR graph is not anchored, i.e., there is no obvious link between words of the sentences and concepts, instances and relations in the graph, annotation of a corpus using a simple text editor is

not possible. Apart from the parentheses it would be very difficult to check manually whether the concepts are correctly chosen and the arguments (notably :ARG0 to :ARG9) defined for the chosen concepts. The corpora mentioned in the AMR project website have mostly been annotated and validated using the AMR editor (Hermjakob, 2013) at <https://amr.isi.edu/editor.html>. Since this tool is not available for download, and we wanted to annotate a specialised evaluation corpus, we started developing metAMoRphosED. Our aim was a utility easy to use for annotators without any profound knowledge of semantic graphs, PENMAN format or triplets and providing as much assistance to the annotators as possible.

2 Architecture

metAMoRphosED is a webserver (implemented in python), the graphical user interface (GUI; implemented using html, css and javascript) is accessible with an internet browser. The server will handle the AMR file and optionally additional validation information like PropBank-data, a list of valid relations or a file which defines the relations an instance of which concepts can have. Start the server with

```
server.py --file amr-file.txt \
 --pbframes propbank-frames/frames \
 --reification reification-table.txt \
 --relations amr-relation-list.txt \
 --concepts amr-concept-list.txt \
 --constraints constraints.yml
```

and point your internet browser to <http://localhost:4567>. Once you have clicked on , a view similar to the one in figure 4 appears. In addition to the sentence, the PENMAN serialisation and the visualisation, the graphical user interface shows the PropBank documentation of all the verbs found in the graph, and possible errors.

2.1 Graph validation

In order to help the annotators metAMoRphosED can load AMR-related data to find potential annotation errors. metAMoRphosED will not modify a graph on its own without user approval, but it will issue warnings.

- concept definitions: since metAMoRphosED has been primarily developed to edit AMR graphs, it can load PropBank data to validate :ARG_n relations of verbal concepts. In order to do so the option `--pbframes <propbank frames directory>` can be used

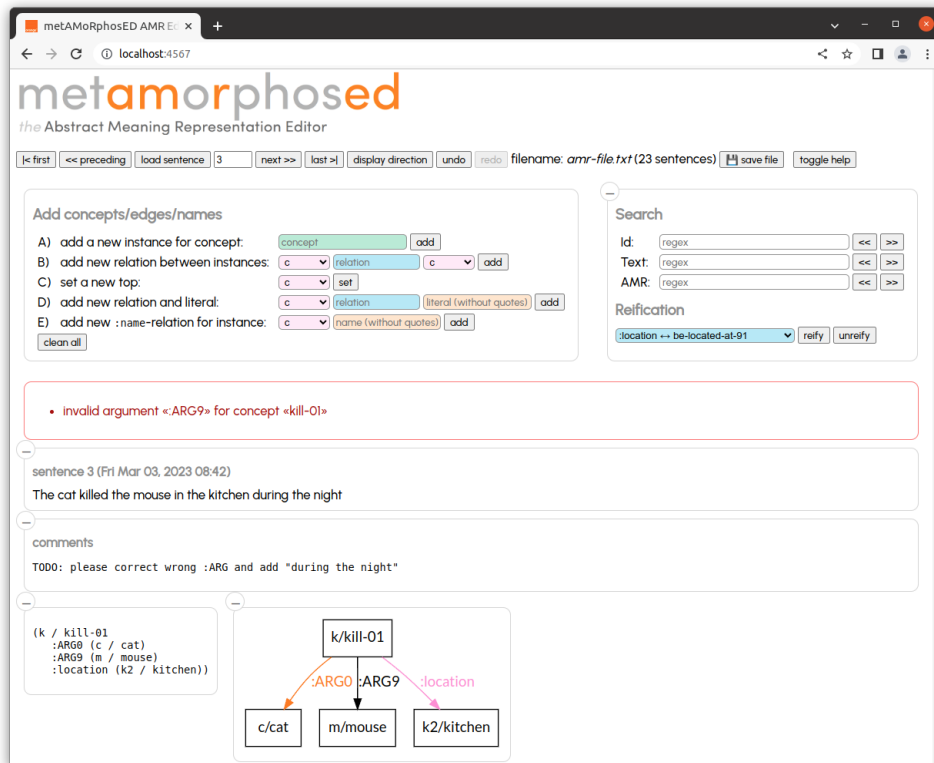


Figure 4: Initial screen with a sentence loaded, comments and an error message

to point to the `frames/` directory PropBank (available at <https://github.com/propbank/propbank-frames>). In addition to validation, metAMoRphosED will show all senses of all verbal concepts in the current graph (cf. figure 5).

- **valid relations:** the option `--relations <filename>` accepts a simple text file which contains a list of all valid relations (including inverted `-of` relations). If a graph contains a relation not in the list, a warning is given. Duplicated relations between two instances (e.g., two `:ARG0` relations) are also indicated as an error.

The editor verifies that instances with outgoing `:opn` or `:sntn` relations, metAMoRphosED have a correct sequence of `:op1` to `:opn` without any missing number.

- **relation constraints:** a more specific way of limiting the possible range values of relations comes with the option `--constraints <constraints.yml>`, for instance:

```
# constraints for domain/relation/range
subjects:
```

```
# name-instances can only have :opn relations,
# which in turn have quoted strings as ranges
# (an initial _ indicates that the predicate
# or object is a regex)
```

```
name:
  _:op\d:
  - "_".*"
```

```
# date-entity instances must only have
# :month, :day and :year predicates with
# integer values or :dayperiod with any value
```

```
date-entity:
  :month:
    - _[01]\d?
  :day:
    - _[0-3]\d?
  :year:
    - _\d\d\d\d
  :dayperiod:
```

- **reification:** the AMR documentation lists a set of relations which can be reified, metAMoRphosED proposes a function for this (cf. figure 6), which can be activated using the option `--reifications <table>`³.

2.2 Non-AMR data

metAMoRphosED is not confined to AMR-data only. As long as the data to be edited can be represented

³See <https://github.com/amrisi/amr-guidelines/blob/master/amr.md> for more details on reification in AMR.

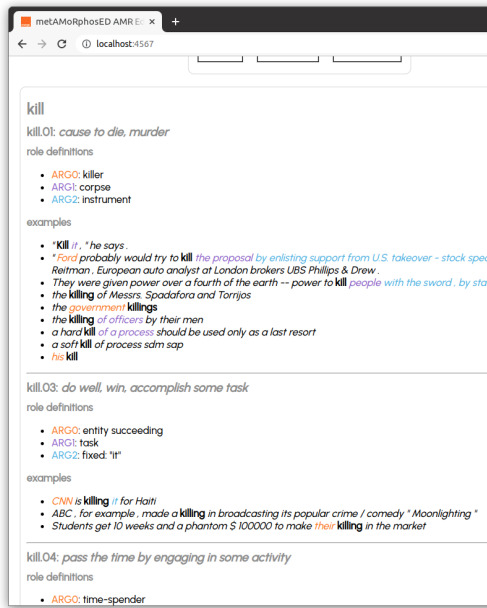


Figure 5: PropBank documentation (clipped)

using the PENMAN format the tool is able to process it. I.e. the data must contain concepts, instances, attributes (literals) and directed relations between them. This means that pure RDF (in contrast to RDFS) can not be annotated, neither can data taken from wikidata be edited directly due to the qualifiers, i.e. triples with an property in subject position.

However data like the MultiWOZ corpus can be transformed into PENMAN and than be edited by metAMoRphosED (Abrougui et al., 2023).

3 Editing functions

metAMoRphosED can create new graphs from scratch (in this case, the AMR-file must contain at least ()) or can be used to modify existing graphs (possibly generated by an AMR parser). Apart from graphical operations a direct modification of the PENMEN serialisation is possible. After every modification the current version of the graph is visualised. Navigation within the current file is possible by giving the sentence number, navigation buttons (first, last, next, preceding) or search functions (sentence id, sentence text, PENMAN, cf. figure 6) with highlighted results.

In order to add new instances or literals and new relations between new and existing instances, an input form is provided in the GUI (figure 7). Existing data can be modified or deleted by clicking on instances or relations in the graph visualisation (cf.

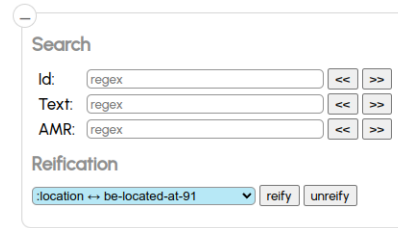


Figure 6: search and reification/dereification

figures 8 and 9). In case of an unwanted modification an *undo* function exists to revert the graph to the preceding version.

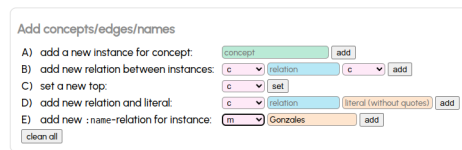


Figure 7: add menu

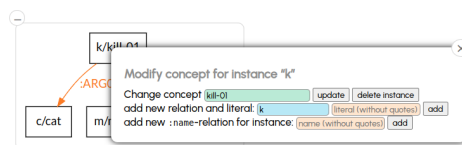


Figure 8: modify a concept

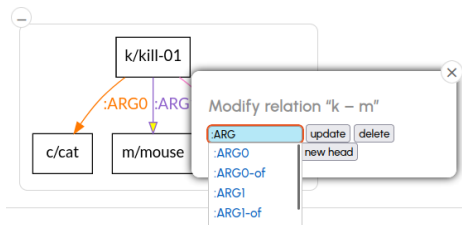


Figure 9: modify a relation

In AMR the entry point of a graph contains topic information, in order to change the entry point a *set top* function is provided.

As mentioned above, if metAMoRphosED was started with the option `--reification`, all relations listed correctly in the loaded reification table can be automatically reified (and unreified if no additional relation exists). So for instance the graph shown in figure 4 is transformed into the graph of figure 10.

If the loaded AMR file is under git version control, clicking the `save file` button also performs a `git add/git commit`.

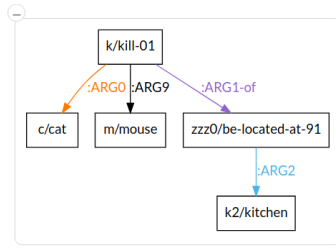


Figure 10: relation :location reified

4 Comparison

Since the existing AMR editor (Hermjakob, 2013) is not available for download, we were not able to compare the annotation speed and ergonomics of metAMoRphosED and ISI’s editor. Since AMR data is stored in PENMAN format, some might find it more difficult to “understand” than a graphical representation. In general, annotation speed depends mainly of the competence and experience of the annotators and much less on the tool. However the graphical representation which metAMoRphosED proposes, makes it easier for annotators new to AMR.

5 Conclusion and prospectives

We presented a novel graph editor, suitable to create or modify and validate Abstract Meaning Representation graphs in a visual mode. All modifications are git-version controllable. The code is actively maintained and available at <https://github.com/Orange-OpenSource/metamorphosed>. metAMoRphosED is currently used to annotate a test corpus containing 400 questions and turned out to be stable.

Apart from an interface to annotate AMR coreferences, which has been implemented and is being tested (cf. figure 11) we plan several future developments, notably a multi-user system, where multiple users can annotate the same file with integrated calculation of annotator agreement. Another improvement could be an automatic search of similar sentences in a reference corpus (such as AMR 3.0) to ensure that similar constructions and sentences are annotated homogeneously. Other ideas include providing a way to integrate plugins which could run queries to external systems to facilitate the annotation as much as possible. We will consider comments and issues posted by users to decide which feature is the most urgent to be implemented first.

Figure 11: AMR coreference editor interface (clipped)

Acknowledgments

We’d like to thank the anonymous reviewers for comments and ideas to improve this paper.

References

- Rim Abrougui, Géraldine Damnati, Johannes Heinecke, and Frédéric Béchet. 2023. Abstract Representation for Multi-Intent Spoken Language Understanding. In *International Conference on Acoustics, Speech, and Signal Processing*, Rhodes Island, Greece. IEEE.
- Laura Banarescu, Claire Bonial, Shu Cai, Madalina Georgescu, Kira Griffitt, Ulf Hermjakob, Kevin Knight, Philipp Koehn, Martha Palmer, and Nathan Schneider. 2013. Abstract Meaning Representation for Sembanking. In *Proceedings of the 7th Linguistic Annotation Workshop and Interoperability with Discourse*, pages 178–186, Sofia, Bulgaria. Association for Computational Linguistics.
- Rexhina Blloshmi, Rocco Tripodi, and Roberto Navigli. 2020. XL-AMR: Enabling Cross-Lingual AMR Parsing with Transfer Learning Techniques. In *Proceedings of the 2020 Conference on Empirical Methods in Natural Language Processing (EMNLP)*, page 2487–2500, Online. Association for Computational Linguistics.
- Marco Damonte and Shay B. Cohen. 2018. Cross-lingual Abstract Meaning Representation Parsing. In *Annual Conference of the North American Chapter of the Association for Computational Linguistics: Human Language Technologies*, pages 1146–1155, New Orleans, Louisiana, USA. Association for Computational Linguistics.
- Johannes Heinecke and Anastasia Shimorina. 2022. Multilingual Abstract Meaning Representation for Celtic Languages. In *Proceedings of the 4th Celtic Language Technology Workshop within LREC2022*, pages 1–6, Marseille. ELRA.

- Ulf Hermjakob. 2013. *AMR Editor: A Tool to Build Abstract Meaning Representations*. <https://amr.isi.edu/papers/amr-editor-ulf2013a.pdf>.
- Hans Kamp and Uwe Reyle. 1993. *From Discourse to Logic. Introduction to Modeltheoretic Semantics of Natural Language, Formal Logic and Discourse Representation Theory*. Studies in Linguistics and Philosophy 42. Kluwer, Dordrecht.
- Robert T. Kaspar. 1989. A Flexible Interface for Linking Applications to Penman’s Sentence Generator. In *Proceedings of the Workshop on Speech and Natural Language*, pages 153–158, Philadelphia, PA. Association for Computational Linguistics.
- Paul Kingsbury and Martha Palmer. 2002. From TreeBank to PropBank. In *Proceedings of the Third International Conference on Language Resources and Evaluation*, Las Palmas, Canary Islands - Spain. European Language Resources Association.
- Martha Palmer, Daniel Gildea, and Paul Kingsbury. 2005. The Proposition Bank: An Annotated Corpus of Semantic Roles. *Computational Linguistics*, 31(1):71–106.
- Sarah Uhrig, Yoalli Rezepka García, Juri Opits, and Anette Frank. 2021. *Translate, then Parse! A strong baseline for Cross-Lingual AMR Parsing*. In *Proceedings of the 17th International Conference on Parsing Technologies and the IWPT 2021 Shared Task on Parsing into Enhanced Universal Dependencies*, pages 58–64, Online. Association for Computational Linguistics.