

Large Dual Encoders Are Generalizable Retrievers

Jianmo Ni*, Chen Qu, Jing Lu, Zhuyun Dai,
Gustavo Hernández Ábrego, Vincent Y. Zhao, Yi Luan,
Keith B. Hall, Ming-Wei Chang, Yinfei Yang*†
Google Research, *Apple

Abstract

It has been shown that dual encoders trained on one domain often fail to generalize to other domains for retrieval tasks. One widespread belief is that the bottleneck layer of a dual encoder, where the final score is simply a dot-product between a query vector and a passage vector, is too limited compared to models with fine-grained interactions between the query and the passage. In this paper, we challenge this belief by scaling up the size of the dual encoder model *while keeping the bottleneck layer as a single dot-product with a fixed size*. With multi-stage training, scaling up the model size brings significant improvement on a variety of retrieval tasks, especially for out-of-domain generalization. We further analyze the impact of the bottleneck layer and demonstrate diminishing improvement when scaling up the embedding size. Experimental results show that our dual encoders, **Generalizable T5-based dense Retrievers (GTR)**, outperform previous sparse and dense retrievers on the BEIR dataset (Thakur et al., 2021) significantly. Most surprisingly, our ablation study finds that GTR is very data efficient, as it only needs 10% of MS Marco supervised data to match the out-of-domain performance of using all supervised data.

1 Introduction

Typical neural retrieval models follow a dual encoder paradigm (Gillick et al., 2018; Yang et al., 2020; Karpukhin et al., 2020). In this setup, queries and documents are encoded separately into a shared fixed-dimensional embedding space, where relevant queries and documents are represented in each other’s proximity. Then, approximated nearest neighbor search (Vanderkam et al., 2013; Johnson et al., 2021) is applied to efficiently retrieve relevant documents given an encoded input query.

* Correspondence to jianmon@google.com

† Work done while at Google Research

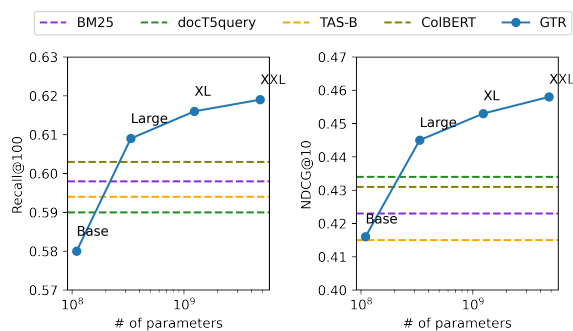


Figure 1: Average Recall@100 and NDCG@10 on all BEIR tasks (excl. MS Marco). Scaling up consistently improves dual encoders’ out-of-domain performance.

While dual encoders are popular neural retrievers, the expressiveness of the model is limited by a bottleneck layer consisting of only a simple dot-product between query and passage embeddings. Lu et al. (2021); Khattab and Zaharia (2020) argued that the dot-product (or cosine similarity) between the embeddings might not be powerful enough to capture the semantic relevance. Similarly, Thakur et al. (2021) suggested that dual encoder models have “issues for out-of-distribution data” and models with more interactions between queries and documents have better generalization ability.

In this paper, we challenge this belief by scaling up the dual encoder model size while keeping the bottleneck as a single dot-product with a fixed size. Note that scaling up a dual encoder is different from scaling up pretrained language models, such as BERT (Devlin et al., 2019) and T5 (Raffel et al., 2020), because of the presence of the bottleneck layer. While increasing the model size can greatly increase model capacity, for dual encoders with a fixed bottleneck embedding size, the interactions between queries and documents are still limited by a simple dot-product.

To test this hypothesis, we take advantage of the T5 architecture and checkpoints to build encoders of up to 5 billion parameters while keeping the

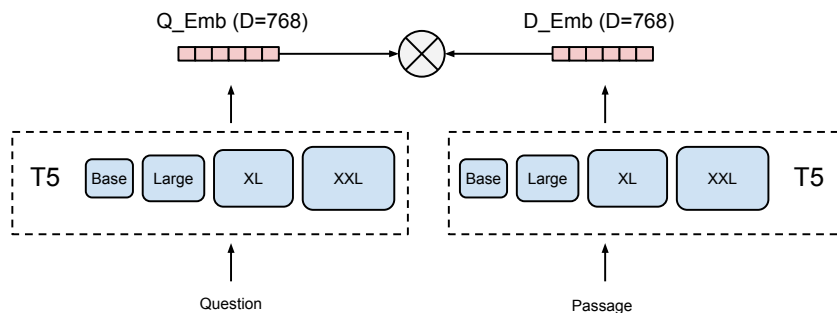


Figure 2: Architecture of **Generalizable T5-based dense Retrievers**. The research question we ask is: *can scaling up dual encoder model size improve the retrieval performance while keeping the bottleneck layers as a single dot-product with a fixed size?* Only the encoder is taken from the pre-trained T5 models, and the two towers of the dual encoder share parameters.

bottleneck embedding dimension of 768 in all configurations, as illustrated in Figure 2. Following Ni et al. (2021), we build dual encoders by taking the encoder part of T5. To effectively leverage the power of large models, we collect two billion web question-answer pairs as generic pre-training data. By combining pre-training with generic data and fine-tuning with MS Marco (Nguyen et al., 2016), we are able to train large-scale dual encoder retrieval models. We call the resulting models **Generalizable T5-based dense Retrievers (GTR)**.

We assess the zero-shot performance of GTR on the BEIR benchmark (Thakur et al., 2021), which has 18 information retrieval tasks across 9 domains. We showed that scaling up leads to better generalization despite the fixed single-dot product bottleneck. Second, pre-training on community question-answer pairs and fine-tuning on human curated data are both important to fully utilize the power of the scaled up model. In addition, with scaling and pre-training, we found GTR to be highly data efficient in terms of human annotated queries, as it only needs to use 10% of MS Marco to match the overall out-of-domain performance.

2 Background

2.1 Dual Encoder and dense retrieval

Classic retrieval models, such as BM25 (Robertson and Zaragoza, 2009), rely on lexical overlap: term frequency, inverse document frequency and document length. To allow semantic matching between queries and documents, dense retrieval models, such as dual encoders (Yih et al., 2011; Gillick et al., 2019; Karpukhin et al., 2020), are introduced, where both queries and documents are embedded into low-dimensional dense representations.

A critical challenge for dual encoders is that the performance can be bounded by the dot-product similarity function. As such, there is growing interest in applying lightweight interaction layers to replace the single dot-product function. Luan et al. (2020) propose a multi-vector encoding model to represent a document as a set of vectors and calculate the relevance scores as the maximum inner product over this set. ColBERT (Khattab and Zaharia, 2020) learns embeddings for each token and then uses a “MaxSim” operation to select the best candidate. While these models can achieve significant improvement, dual encoder is still the most popular in practice due to its simplicity and the ability to scale. In this paper, we take a step back and show that performance of single dot-product based methods can be improved significantly.

2.2 BEIR generalization task

We use BEIR, a heterogeneous benchmark, for zero-shot retrieval evaluation. BEIR has 18 information retrieval datasets¹ across 9 domains, including *Bio-Medical*, *Finance*, *News*, *Twitter*, *Wikipedia*, *StackExchange*, *Quora*, *Scientific*, and *Misc*. The majority of the datasets have binary query relevance labels. The other datasets have 3-level or 5-level relevance judgements. We refer readers to BEIR (Thakur et al., 2021) for more details.

3 Generalizable T5 Retriever

3.1 T5 dual encoder

We adopt the dual encoder framework and follow prior work (Xiong et al., 2020; Hofstätter et al.,

¹MS Marco is excluded from the zero-shot comparison as many baseline model used it as training data.

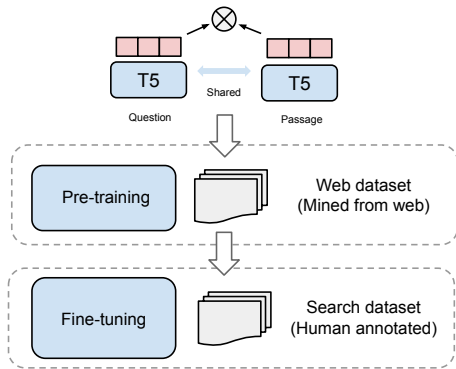


Figure 3: Multi-stage training for GTR models.

2021) to initialize from pre-trained language models. We choose the pre-trained T5 model family as our backbone encoder because it provides off-the-shelf pre-trained models with capacities ranging from millions to billions of parameters (Raffel et al., 2020; Xue et al., 2020, 2021). We illustrate the architectures of our models in Figure 2.

Let paired examples $\mathcal{D} = \{(q_i, p_i^+)\}$ be the training set, where q_i is a query and p_i^+ is a ground-truth relevant passage. Following Ni et al. (2021), we encode q_i and p_i^+ into embeddings by feeding them to the T5 encoder and taking the mean pooling of the encoder output. In all experiments, we fix the size of the output embeddings to 768.

We train the model using an in-batch sampled softmax loss (Henderson et al., 2017):

$$\mathcal{L} = \frac{e^{\text{sim}(q_i, p_i^+)/\tau}}{\sum_{j \in \mathcal{B}} e^{\text{sim}(q_i, p_j^+)/\tau}}, \quad (1)$$

where sim is cosine similarity, \mathcal{B} is a mini-batch of examples, and τ is the softmax temperature.

In addition to in-batch negatives, we also support having additional negatives p_j^- :

$$\mathcal{L} = \frac{e^{\text{sim}(q_i, p_i^+)/\tau}}{\sum_{j \in \mathcal{B}} e^{\text{sim}(q_i, p_j^+)/\tau} + e^{\text{sim}(q_i, p_j^-)/\tau}}. \quad (2)$$

We apply this loss function in a bi-directional way (Yang et al., 2019) for matchings of both question-to-document and document-to-question.

3.2 Multi-stage training

As shown in Figure 3, we use a multi-stage training approach to achieve generalizable retrieval models.

The training process includes a pre-training stage on a web-mined corpus and a fine-tuning stage on search datasets. Although the web-mined corpus is

not annotated, it contains a large amount of semi-structured data pairs (e.g., question-answer pairs) and can provide rich semantic relevance information to the model in pre-training. On the other hand, the search datasets are curated and well-annotated, and thus, can benefit the fine-tuning stage.

Specifically, for dual encoder pre-training, we initialize the dual encoders from the T5 models and train on question-answer pairs collected from the Web. Recently, Sentence-T5 (Ni et al., 2021) explored different ways to extract strong text embeddings and achieved remarkable performance on SentEval and Sentence Textual Similarity tasks. We follow their setting to encode queries and passages via mean pooling from the T5 encoders and focus on the dense retrieval tasks.

For fine-tuning, our aim is to adapt the model to retrieval using a high quality search corpus so the model can learn to better match generic queries to documents. In this paper, we consider two datasets for fine-tuning: MS Marco (Nguyen et al., 2016) and Natural Questions (NQ) (Kwiatkowski et al., 2019).

4 Experimental setup

4.1 Training Data

Community QA. To leverage the power of large scale models, we collect input-response pairs and question-answer pairs from online forums and QA websites, such as Reddit and StackOverflow. This results in 2 billion question-answer pairs that we use to pre-train the dual encoder.

MS Marco. The MS Marco dataset (Nguyen et al., 2016) includes 532K query and document pairs, which we use as search data for fine-tuning. This dataset is sampled from Bing search logs and covers a broad range of domains and concepts.

Natural Questions. In the fine-tuning stage, we also consider the Natural Questions dataset (Kwiatkowski et al., 2019), which has been widely used in related work (Karpukhin et al., 2020; Xiong et al., 2020). This dataset consists of 130K query and passage pairs that are human-annotated.

4.2 Configurations

We implement GTR models in JAX² and train them on Cloud TPU-V3. We consider different sizes of the T5 transformer (Vaswani et al., 2017) architecture, including Base, Large, XL and XXL. Their

²<https://github.com/google/jax>

GTR Models	Base	Large	XL	XXL
#. of params	110M	335M	1.24B	4.8B

Table 1: Number of parameters in the GTR models.

Models	Dim. size
ColBERT	128
DPR, ANCE, TAS-B, GenQ, GTR	768
BM25, DocT5Query	-

Table 2: Dimension of different models. Most dual encoder models set the embedding dimension to 768.

number of parameters are listed in Table 1. Note that we only use the *encoder* of the T5 models, and thus, the number of parameters are less than half of that of the full model. We take the off-the-shelf checkpoints as the initial parameters and use the same sentencepiece vocabulary model.³

During pre-training and fine-tuning, we set the batch size to 2048 and the softmax temperature τ to 0.01. We use Adafactor optimizer (Shazeer and Stern, 2018) and set the initial learning rate to 1e-3 with a linear decay. We train the model for 800K steps for pre-training and 20K steps for fine-tuning.

For fine-tuning, we use the hard negatives from RocketQA (Qu et al., 2021) with MS Marco and the hard negatives from Lu et al. (2021) with NQ. These hard negatives were proven to lead to better retrieval performance. By default, we use the complete MS Marco or NQ datasets for fine-tuning.

When evaluating on the BEIR benchmark, we use sequences of 64 tokens for questions and 512 for documents in all datasets but Trec-News, Robust-04, and ArguAna. In particular, we set the document length to 768 for Trec-News and Robust-04 while setting the question length to 512 for ArguAna, in accordance with the average query and document lengths in these datasets.

Our code and models are released at https://github.com/google-research/t5x_retrieval#released-model-checkpoints.

4.3 Models for comparison

We consider various baselines, including sparse retrieval models: BM25, DocT5Query, and dense retrieval models: DPR, ANCE, TAS-B, and GenQ (Thakur et al., 2021). We conduct experiments on four different sizes of our GTR models (GTR-

³<https://github.com/google-research/text-to-text-transfer-transformer#released-model-checkpoints>

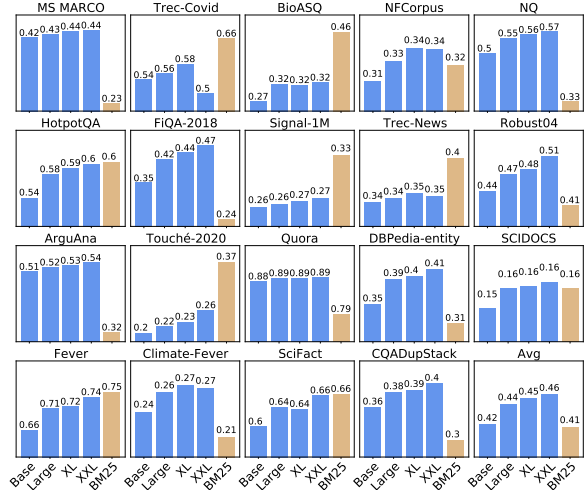


Figure 4: Comparison with BM25 on NDCG@10. GTR-Base outperforms BM25 on 9 tasks with larger GTR models continuing improving on these 9 tasks. GTR-XXL catches-up/surpasses BM25 on another 5 tasks and only under-performs on the remaining 5.

Base, GTR-Large, GTR-XL, and GTR-XXL). We also consider three different settings for GTR to investigate the effect of scaling up for different training stages:

- GTR: the full GTR models that conduct both pre-training and fine-tuning.
- GTR-FT: only fine-tuned on MS Marco without pre-training.
- GTR-PT: only pre-trained on CommunityQA without fine-tuning.

We evaluate our models on BEIR (Thakur et al., 2021) as discussed in Section 2.2. We consider two retrieval metrics: NDCG@10 and Recall@100 following BEIR. Due to space limitations, we report the Recall@100 results in Appendix A.

5 Evaluation Results

We present three groups of experiments to study a) the in-domain performance on MS Marco, b) the out-of-domain generalization performance on BEIR, and c) the data efficiency.

5.1 Results on MS Marco

As shown in Table 3, with scaling up, the in-domain NDCG@10 scores on MS Marco achieve consistent improvement. We observe a similar effect on other evaluation metrics, including MRR@10 and Recall@1000, and reported the numbers in Table 7 of Appendix A. This shows that increasing model capacity leads to better in-domain performance.

NDCG@10 / Model	Lexical / Sparse		Dense					Ours			
	BM25	docT5Query	DPR	ANCE	TAS-B	GenQ	ColBERT	GTR-Base	GTR-Large	GTR-XL	GTR-XXL
MS Marco	0.228	0.338	0.177	0.388	0.408	0.408	0.401	0.420	0.430	0.439	0.442
Trec-Covid	0.656	0.713	0.332	0.654	0.481	0.619	0.677	0.539	0.557	0.584	0.501
BioASQ	0.465	0.431	0.127	0.306	0.383	0.398	0.474	0.271	0.320	0.317	0.324
NFCorpus	0.325	0.328	0.189	0.237	0.319	0.319	0.305	0.308	0.329	0.343	0.342
NQ	0.329	0.399	0.474	0.446	0.463	0.358	0.524	0.495	0.547	0.559	0.568
HotpotQA	0.603	0.58	0.391	0.456	0.584	0.534	0.593	0.535	0.579	0.591	0.599
FiQA-2018	0.236	0.291	0.112	0.295	0.300	0.308	0.317	0.349	0.424	0.444	0.467
Signal-1M	0.330	0.307	0.155	0.249	0.289	0.281	0.274	0.261	0.265	0.268	0.273
Trec-News	0.398	0.42	0.161	0.382	0.377	0.396	0.393	0.337	0.343	0.350	0.346
Robust04	0.408	0.437	0.252	0.392	0.427	0.362	0.391	0.437	0.470	0.479	0.506
ArguAna	0.315	0.349	0.175	0.415	0.429	0.493	0.233	0.511	0.525	0.531	0.540
Touché-2020	0.367	0.347	0.131	0.240	0.162	0.182	0.202	0.205	0.219	0.230	0.256
Quora	0.789	0.802	0.248	0.852	0.835	0.830	0.854	0.881	0.890	0.890	0.892
DBPedia-entity	0.313	0.331	0.263	0.281	0.384	0.328	0.392	0.347	0.391	0.396	0.408
SCIDOCS	0.158	0.162	0.077	0.122	0.149	0.143	0.145	0.149	0.158	0.159	0.161
Fever	0.753	0.714	0.562	0.669	0.700	0.669	0.771	0.660	0.712	0.717	0.740
Climate-Fever	0.213	0.201	0.148	0.198	0.228	0.175	0.184	0.241	0.262	0.270	0.267
SciFact	0.665	0.675	0.318	0.507	0.643	0.644	0.671	0.600	0.639	0.635	0.662
CQADupStack	0.299	0.325	0.153	0.296	0.314	0.347	0.350	0.357	0.384	0.388	0.399
Avg	0.413	0.429	0.234	0.389	0.414	0.410	0.429	0.416	0.444	0.452	0.457
Avg w/o MS Marco	0.423	0.434	0.237	0.389	0.415	0.410	0.431	0.416	0.445	0.453	0.458

Table 3: NDCG@10 BEIR. Best results are marked in bold. GTR models are pre-trained on CommunityQA dataset and the complete MS Marco dataset. GTR models achieve better NDCG when increasing size from Base to XXL, outperforming the previous best sparse model DocT5Query and dense retrieval model TAS-B.

5.2 Results on BEIR generalization tasks

Also as shown in Table 3, we observe a clear gain on out-of-domain (OOD) performance in terms of NDCG@10 when the model size increases. The GTR-Large model already outperforms the previous best dense retrieval model TAS-B, as well as the best sparse model DocT5Query. Scaling up to GTR-XXL leads to another jump in retrieval performance. On average, the scaling up process demonstrates an encouraging ascending trend that eventually make GTR outperform all baseline methods on all evaluation metrics. This confirms that scaling up is a valid path towards generalizability.

Previously, dual encoders failed to match the performance of BM25 for tasks that require better lexical matching capabilities. Thus, we would like to investigate what kind of tasks can get improved by scaling up the model size. Figure 4 presents a detailed comparison of all sizes of GTR models against the BM25 baseline.

For tasks like NQ, where dual encoders have been previously shown to be more effective than BM25, increasing the model size continues to advance the performance of dual encoders. This suggests scaling up can further boost the head start of dense models over sparse models on these datasets.

For tasks like BioASQ and NFCorpus, where dual encoders previously struggled to match the performance of BM25 for inherent reasons, we discover scaling up consistently improves the retrieval performance. In particular, for NFCorpus, our Base

Ratio of data	GTR-FT		GTR		
	Large	XL	Large	XL	XXL
NDCG@10 on MS Marco					
10%	0.402	0.397	0.428	0.426	0.379
100%	0.415	0.418	0.430	0.439	0.442
Zero-shot average NDCG@10 w/o MS Marco					
10%	0.413	0.418	0.452	0.462	0.465
100%	0.412	0.433	0.445	0.453	0.458

Table 4: Comparisons of NDCG@10 for GTR models fine-tuned with different amount of data.

model under-performs BM25 but the XL model outperforms BM25 by 5.5% (0.343 vs. 0.325). This exciting finding verifies our assumption that scaling up can further exploit the powerful semantic matching capabilities of the dual encoder models and enable them to ultimately outperform BM25.

5.3 Data efficiency for large retrievers

To better understand the data efficiency for large dual encoders, we train GTR models using different proportions of MS Marco during fine-tuning. In particular, we sample a subset of the MS Marco training data by keeping only 10% of the training queries, as well as their relevant (positive) passages and irrelevant (hard negative) passages.

As shown in Table 4, using 10% of the training data reduces the in-domain performance of GTR on MS Marco, as expected. For OOD performance, however, we find some surprising results. We see

	GTR-FT	GTR-PT	GTR
Fine-tuning	✓	✗	✓
NDCG@10 on MS Marco			
Base	0.400	N/A	0.420
Large	0.415	N/A	0.430
XL	0.418	N/A	0.439
XXL	<u>0.422</u>	N/A	<u>0.442</u>
Zero-shot average NDCG@10 w/o MS Marco			
Base	0.387	0.295	0.416
Large	0.412	0.315	0.445
XL	0.433	0.315	0.453
XXL	0.430	0.332	0.458

Table 5: Comparisons (NDCG@10) of models trained with and without pre-training and fine-tuning. GTR-PT is not fine-tuned, and thus, does not have in-domain performance. Notably, GTR-FT XL already outperforms the previous best dual-encoder model TAS-B.

that the Large GTR-FT (fine-tuning only) model already shows comparable performance even trained with only 10% of the data. Moreover, the full GTR models trained with less data manage to achieve comparable or even better OOD performance than those fine-tuned on the complete MS Marco dataset. This is strong evidence that using 10% of the MS Marco dataset is sufficient to conduct fine-tuning for the full GTR models. This encouraging observation suggests that GTR models enjoy the benefit of data efficiency and can achieve domain adaptation with less fine-tuning data.

6 Ablation Study and Analysis

In this section we present ablations and analysis to further illustrate the effects of scaling up, the impact of fine-tuning and pre-training, and the GTR model’s behavior.

6.1 Scaling up in different training stages

The first ablation study aims to investigate how scaling up impacts dual encoder pre-training and fine-tuning. Results are presented in Table 5.

For fine-tuning only models (GTR-FT), scaling up benefits both in-domain and OOD performance. This suggests that, even without pre-training, having larger models is still beneficial to learn the retrieval signals during fine-tuning. For pre-training only models (GTR-PT), we also observe a generally upward trend for zero-shot retrieval tasks. This indicates scaled up models are more capable of absorbing the semantic information in generic training data, and thus, can improve generalization.

Model	Fine-tuning dataset	Zero-shot average NDCG@10
DPR	NQ	0.237
GTR-Base	NQ	0.360
GTR-Large	NQ	0.379
GTR-XL	NQ	0.407
GTR-Large	MS Marco	0.445
GTR-XL	MS Marco	<u>0.453</u>

Table 6: Comparisons of fine-tuning on MS Marco and NQ with average zero-shot NDCG@10.

Finally, with both pre-training and fine-tuning, the full GTR models consistently improve over GTR-FT of all sizes. This shows the power of combining scaling up and a generic pre-training stage.

6.2 Importance of the fine-tuning dataset

In Table 5, we compare GTR and GTR-PT on the BEIR benchmark to understand the importance of fine-tuning on MS Marco. The table shows that there is a clear gap between GTR models before and after fine-tuning. The result demonstrates the necessity of leveraging a high quality dataset (e.g., search data) to fine-tune the dual encoders.

Specifically, we compare fine-tuning GTR on NQ vs. MS Marco. NQ only covers Wikipedia documents and is much smaller in size than MS Marco. This allows us to investigate the performance of GTR of being fine-tuned on a less generalizable dataset. Also, fine-tuning on NQ gives a fair comparison with DPR (Karpukhin et al., 2020).

As shown in Table 6, the GTR-Base model fine-tuned on NQ outperforms the original DPR model that uses a BERT-Base model as the backbone encoder. This demonstrates the effectiveness of our pre-training on the Web dataset, as well as the hard negatives introduced from Lu et al. (2021) for NQ. Also, fine-tuning on NQ leads to inferior performance compared to fine-tuning on MS Marco, which is consistent with prior work (Thakur et al., 2021). However, the disadvantage of fine-tuning on NQ is being relieved as the model scales up. This shows that the benefit of scaling up holds for different fine-tuning datasets. Furthermore, when scaling up from Large to XL, we observe a more significant gain when fine-tuning with NQ than with MS Marco, indicating that scaling up helps more when using weaker fine-tuning data.

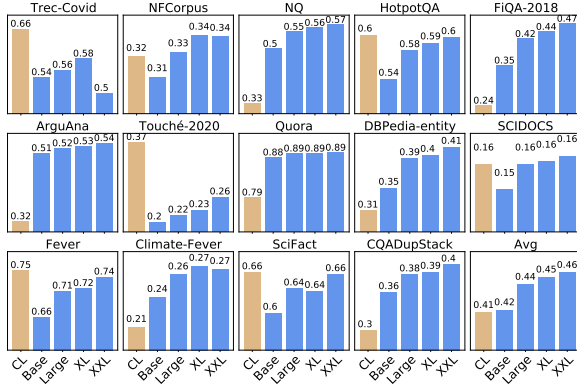


Figure 5: Comparison with Izcard et al. (2021) on NDCG@10. “CL” denotes their approach with contrastive learning on C4 and Wiki while others denote GTR with different sizes. Note that they only report results on 15 datasets of the BEIR benchmark.

6.3 Different pre-training strategies

Concurrently, Izcard et al. (2021) propose to conduct contrastive learning (CL) pre-training with data from C4 and Wiki datasets in an unsupervised way. In particular, their pre-training data is constructed by randomly choosing two spans from a single document and conduct word deletion or replacement to each span. In contrast, GTR uses Web-mined QA data as the pre-training data.

We compare the performance of GTR to their models to gain further insights into using different pre-training data and methods for dual encoders. As shown in Figure 5, on over half of the datasets, models with our pre-training approach under-perform CL-Pretrain with the base size; while as the model size increases, GTR-Large and -XXL models show significant gains over CL-Pretrain. This demonstrates that scaling up can mitigate the disadvantage of using a potentially inferior pre-training method. Note that our pre-training is additive to CL-Pretrain and we can leverage the pre-training on C4 and Wiki to further improve the results. We leave this exploration to future work.

6.4 Document length vs. model capacity

Previously, Thakur et al. (2021) showed that models trained with cosine similarity prefer short documents while those trained with dot-product prefer long documents. To investigate whether scaling up affects this observation, we compute the median lengths of the top-10 retrieved documents for all queries and present the results in Figure 6.

Though all GTR models are trained using cosine similarity, we found that scaling up the model

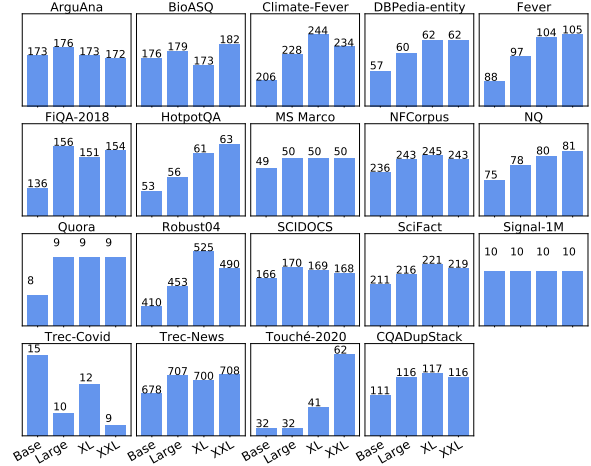


Figure 6: Median lengths (in words) of top-10 retrieved documents for all queries.

size has influence over the lengths of retrieved documents. We observe an increasing trend of document length for DB-Pedia, Fever, HotpotQA, Signal-1M, Trec-News, and Web-Touche2020 with scaling up. In particular, for Web-Touche2020, the lengths of the retrieved documents grow drastically as the model scales up: The largest GTR-XXL retrieves documents that are on average twice as long compared with the smallest GTR-Base. This contributes to the performance since Thakur et al. (2021) show that the majority of relevant documents in Web-Touche2020 are longer.

On the other hand, the only exception we observe is the Trec-Covid dataset, where GTR-XXL model retrieves much shorter documents than those by its smaller size counterparts. This may explain the inferior performance of GTR-XXL on Trec-Covid shown in Table 3 and Table 8. We leave it as future work to explore the effects of using dot-product as the similarity function for large dual encoders.

6.5 Scaling up with different bottleneck size

This section presents a complementary study to reveal the interaction of scaling up model capacity and increasing the bottleneck embedding size.

Specifically, we set the bottleneck embedding size to [256, 768, 2048, 4096]. Given this significant increase in the hyperparameter space, we make two minor compromises to be frugal on computational resources: 1) we directly fine-tune on MS Marco without pre-training on the Community QA dataset; 2) we evaluate on six randomly selected OOD datasets, which are BioASQ, DBPedia-entity, NQ, HotpotQA, Fever, and SciFact.

We present results of NDCG@10 in Figure 7.

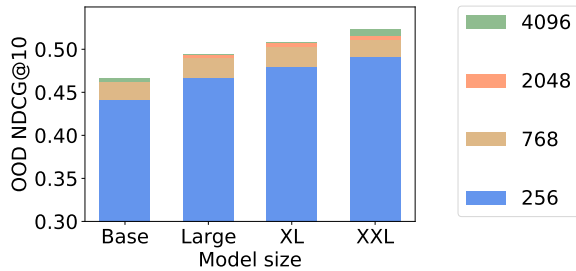


Figure 7: Average NDCG@10 for selected OOD datasets with different bottleneck and model sizes.

We observe that, under all choices of bottleneck embedding sizes, scaling up model capacity consistently improves model performance. On the other hand, when we increase the bottleneck dimension size, the performance gain is minimum from the dimensionality of 768 to 4096, as similarly observed in (Neelakantan et al., 2022). These observations indicate that, to enhance model generalizability under the single-vector dot-product scheme, scaling up model size can be more effective than increasing the bottleneck dimensionality. We leave the exploration of using better training objectives to improve the scaling law of bottleneck dimensionality as our future work.

7 Related Work

Neural information retrieval. Document retrieval is an important task in the NLP and information retrieval (IR) communities. Traditionally, lexical based approaches trying to match the queries and documents based on term overlap, such as TF-IDF and BM25 (Robertson and Zaragoza, 2009), have achieved great success in this task. Recently, neural based approaches, which go beyond the simple term matching, are being quickly adopted by the community and achieving state-of-the-art performance on multiple retrieval tasks, such as passage retrieval (Karpukhin et al., 2020), question answering (Ahmad et al., 2019), conversational question answering (Qu et al., 2020) and bitext retrieval (Feng et al., 2020).

Dual encoders for neural retrieval. In the line of neural retrievers, dual encoders have demonstrated great performance compared to traditional sparse models, such as BM25, on a wide range of retrieval tasks (Karpukhin et al., 2020; Gillick et al., 2018). A key to the success of dual encoders is pre-trained language models, from which the dual encoders are initialized. Other techniques, such as

negative mining (Xiong et al., 2020; Lu et al., 2021; Sachan et al., 2021) and having large training batch sizes (Qu et al., 2021), are also highly effective. However, little work has been done on discussing the effect of the capacity of the backbone models.

Zero-shot neural retrieval. Recent works have shown great improvement under the zero-shot setting for dual encoders by leveraging distillation and synthetic data generation (Thakur et al., 2021; Hofstätter et al., 2021; Ma et al., 2020). Both these techniques, and scaling up backbone models, are effective ways to close the gap between dual encoders and the upper bound of the single-product approaches with fixed-dimension embeddings. On the other hand, multi-vector approaches introduce more interactions between dense embeddings, which could also benefit from scaling up the backbone encoders. We hope that our exploration on scaling up model sizes for single dot-product based methods can lay the groundwork for multi-vector approaches and further push the frontier of neural information retrieval.

8 Inference latency

A caveat of scaling up is the increase in latency overhead. Therefore, we investigate the inference speed, in microseconds (ms), for all GTR models with a batch size of 1 and an input length of 128. We found the latency increases from 17 ms, 34 ms, 96 ms to 349 ms. To put it in context, the GTR-Base model has a close latency compared to TAS-B while the largest GTR-XXL model has a similar latency with re-ranking models (Thakur et al., 2021). With the recent work towards making large models efficient with sparsification, distillation and prompt-tuning, we hope the inference time for large dual encoders can be significantly reduced in the future.

9 Conclusion

This paper presents the Generalizable T5 Retriever (GTR), a scaled-up dual encoder model with a fixed-size dot-product bottleneck layer. We show that scaling up the model size brings significant improvement on retrieval performance across the board on the BEIR zero-shot retrieval benchmark, especially for out-of-domain generalization. The GTR-XXL model performs at the level of state-of-the-art performance on BEIR, outperforming many models that use earlier interactions between queries and documents. This sheds light on the research

direction to continue enhancing the single vector representation model through better backbone encoders. Moreover, our in-depth analysis reveals the impact of scaling up under the scenarios of different training stages, pre-training strategies, fine-tuning datasets, and bottleneck sizes, as well as how scaling up influences the retrieved document lengths. Our findings can inform future work and is an integral part of the joint effort to improve dual encoder models.

10 Limitations

In our work, we focus on standard dual encoder training and have not investigated other techniques such as distillation. There have been shown distillation is a strong recipe to improve the dense retrieval models on out-of-domain performance (Santhanam et al., 2021; Formal et al., 2021). We hope to investigate whether the scaling effect could also benefit distillation if we scale up the student dual encoders. In addition, we only focus on English-only corpus and we leave the exploration of scaling up dense retrievers for multi-lingual corpus to future work.

Acknowledgments

We thank Chris Tar and Don Metzler for feedback and suggestions. We thank all reviewers for their constructive feedback.

References

- Amin Ahmad, Noah Constant, Yinfei Yang, and Daniel Cer. 2019. [ReQA: An evaluation for end-to-end answer retrieval models](#). In *Workshop on Machine Reading for Question Answering*.
- Jacob Devlin, Ming-Wei Chang, Kenton Lee, and Kristina Toutanova. 2019. Bert: Pre-training of deep bidirectional transformers for language understanding. In *NAACL*.
- Fangxiaoyu Feng, Yinfei Yang, Daniel Cer, Naveen Arivazhagan, and Wei Wang. 2020. [Language-agnostic bert sentence embedding](#).
- Thibault Formal, C. Lassance, Benjamin Piwowarski, and Stéphane Clinchant. 2021. Splade v2: Sparse lexical and expansion model for information retrieval. *ArXiv*, abs/2109.10086.
- D. Gillick, A. Presta, and Gaurav Singh Tomar. 2018. End-to-end retrieval in continuous space. *ArXiv*, abs/1811.08008.
- Daniel Gillick, Sayali Kulkarni, Larry Lansing, Alessandro Presta, Jason Baldridge, Eugene Ie, and Diego Garcia-Olano. 2019. [Learning dense representations for entity retrieval](#). In *Proceedings of the 23rd Conference on Computational Natural Language Learning (CoNLL)*, pages 528–537, Hong Kong, China. Association for Computational Linguistics.
- Matthew Henderson, Rami Al-Rfou, B. Strope, Yun-Hsuan Sung, László Lukács, Ruiqi Guo, Sanjiv Kumar, Balint Miklos, and R. Kurzweil. 2017. Efficient natural language response suggestion for smart reply. *ArXiv*, abs/1705.00652.
- Sebastian Hofstätter, Sheng-Chieh Lin, Jheng-Hong Yang, Jimmy Lin, and Allan Hanbury. 2021. Efficiently teaching an effective dense retriever with balanced topic aware sampling. *arXiv preprint arXiv:2104.06967*.
- Gautier Izacard, Mathilde Caron, Lucas Hosseini, Sebastian Riedel, Piotr Bojanowski, Armand Joulin, and Edouard Grave. 2021. Towards unsupervised dense information retrieval with contrastive learning. *arXiv preprint arXiv:2112.09118*.
- Jeff Johnson, Matthijs Douze, and Hervé Jégou. 2021. [Billion-scale similarity search with gpus](#). *IEEE Transactions on Big Data*, 7(3):535–547.
- Vladimir Karpukhin, Barlas Oguz, Sewon Min, Patrick Lewis, Ledell Wu, Sergey Edunov, Danqi Chen, and Wen-tau Yih. 2020. [Dense passage retrieval for open-domain question answering](#). In *Proceedings of the 2020 Conference on Empirical Methods in Natural Language Processing (EMNLP)*, pages 6769–6781, Online. Association for Computational Linguistics.
- Omar Khattab and Matei Zaharia. 2020. Colbert: Efficient and effective passage search via contextualized late interaction over bert. In *Proceedings of the 43rd International ACM SIGIR conference on research and development in Information Retrieval*, pages 39–48.
- Tom Kwiatkowski, Jennimaria Palomaki, Olivia Redfield, Michael Collins, Ankur Parikh, Chris Alberti, Danielle Epstein, Illia Polosukhin, Jacob Devlin, Kenton Lee, et al. 2019. Natural questions: a benchmark for question answering research. *Transactions of the Association for Computational Linguistics*, 7:453–466.
- Jing Lu, Gustavo Hernández Ábrego, Ji Ma, Jianmo Ni, and Yinfei Yang. 2021. Multi-stage training with improved negative contrast for neural passage retrieval. In *Proceedings of the 2021 Conference on Empirical Methods in Natural Language Processing*, pages 6091–6103.
- Yi Luan, Jacob Eisenstein, Kristina Toutanova, and Michael Collins. 2020. Sparse, dense, and attentional representations for text retrieval. *arXiv preprint arXiv:2005.00181*.

- Ji Ma, Ivan Korotkov, Yinfei Yang, Keith Hall, and Ryan McDonald. 2020. Zero-shot neural retrieval via domain-targeted synthetic query generation. *arXiv e-prints*, pages arXiv–2004.
- Arvind Neelakantan, Tao Xu, Raul Puri, Alec Radford, Jesse Michael Han, Jerry Tworek, Qiming Yuan, Nikolas A. Tezak, Jong Wook Kim, Chris Hallacy, Johannes Heidecke, Pranav Shyam, Boris Power, Tyna Eloundou Nekoul, Girish Sastry, Gretchen Krueger, David P. Schnurr, Felipe Petroski Such, Kenny Sai-Kin Hsu, Madeleine Thompson, Tabarak Khan, Toki Sherbakov, Joanne Jang, Peter Welinder, and Lilian Weng. 2022. Text and code embeddings by contrastive pre-training. *ArXiv*, abs/2201.10005.
- Tri Nguyen, Mir Rosenberg, Xia Song, Jianfeng Gao, Saurabh Tiwary, Rangan Majumder, and Li Deng. 2016. *Ms marco: A human generated machine reading comprehension dataset*.
- Jianmo Ni, Gustavo Hernández Ábrego, Noah Constant, Ji Ma, Keith B Hall, Daniel Cer, and Yinfei Yang. 2021. Sentence-t5: Scalable sentence encoders from pre-trained text-to-text models. *arXiv preprint arXiv:2108.08877*.
- Chen Qu, Liu Yang, Cen Chen, Minghui Qiu, W. Bruce Croft, and Mohit Iyyer. 2020. Open-retrieval conversational question answering. In *Proceedings of the 43rd International ACM SIGIR Conference on Research and Development in Information Retrieval*.
- Yingqi Qu, Yuchen Ding, Jing Liu, Kai Liu, Ruiyang Ren, Wayne Xin Zhao, Daxiang Dong, Hua Wu, and Haifeng Wang. 2021. Rocketqa: An optimized training approach to dense passage retrieval for open-domain question answering. In *Proceedings of the 2021 Conference of the North American Chapter of the Association for Computational Linguistics: Human Language Technologies*, pages 5835–5847.
- Colin Raffel, Noam M. Shazeer, Adam Roberts, Katherine Lee, Sharan Narang, Michael Matena, Yanqi Zhou, W. Li, and Peter J. Liu. 2020. Exploring the limits of transfer learning with a unified text-to-text transformer. *JMLR*, 21/140.
- Stephen Robertson and Hugo Zaragoza. 2009. *The probabilistic relevance framework: Bm25 and beyond*. *Found. Trends Inf. Retr.*, 3(4):333–389.
- Devendra Sachan, Mostofa Patwary, Mohammad Shoeybi, Neel Kant, Wei Ping, William L. Hamilton, and Bryan Catanzaro. 2021. *End-to-end training of neural retrievers for open-domain question answering*. In *Proceedings of the 59th Annual Meeting of the Association for Computational Linguistics and the 11th International Joint Conference on Natural Language Processing (Volume 1: Long Papers)*, pages 6648–6662, Online. Association for Computational Linguistics.
- Keshav Santhanam, O. Khattab, Jon Saad-Falcon, Christopher Potts, and Matei A. Zaharia. 2021. Colbertv2: Effective and efficient retrieval via lightweight late interaction. *ArXiv*, abs/2112.01488.
- Noam Shazeer and Mitchell Stern. 2018. Adafactor: Adaptive learning rates with sublinear memory cost. In *International Conference on Machine Learning*, pages 4596–4604. PMLR.
- Nandan Thakur, Nils Reimers, Andreas Rücklé, Abhishek Srivastava, and Iryna Gurevych. 2021. *BEIR: A heterogeneous benchmark for zero-shot evaluation of information retrieval models*. In *Thirty-fifth Conference on Neural Information Processing Systems Datasets and Benchmarks Track (Round 2)*.
- Dan Vanderkam, Rob Schonberger, Henry Rowley, and Sanjiv Kumar. 2013. *Nearest neighbor search in google correlate*. Technical report, Google.
- Ashish Vaswani, Noam Shazeer, Niki Parmar, Jakob Uszkoreit, Llion Jones, Aidan N Gomez, Łukasz Kaiser, and Illia Polosukhin. 2017. *Attention is all you need*. In *Advances in Neural Information Processing Systems*, volume 30. Curran Associates, Inc.
- Lee Xiong, Chenyan Xiong, Ye Li, Kwok-Fung Tang, Jialin Liu, Paul Bennett, Junaid Ahmed, and Arnold Overwijk. 2020. Approximate nearest neighbor negative contrastive learning for dense text retrieval. *arXiv preprint arXiv:2007.00808*.
- Linting Xue, Aditya Barua, Noah Constant, Rami Al-Rfou, Sharan Narang, Mihir Kale, Adam Roberts, and Colin Raffel. 2021. Byt5: Towards a token-free future with pre-trained byte-to-byte models. *arXiv preprint arXiv:2105.13626*.
- Linting Xue, Noah Constant, Adam Roberts, Mihir Kale, Rami Al-Rfou, Aditya Siddhant, Aditya Barua, and Colin Raffel. 2020. mt5: A massively multilingual pre-trained text-to-text transformer. *arXiv preprint arXiv:2010.11934*.
- Yinfei Yang, Gustavo Hernández Abrego, Steve Yuan, Mandy Guo, Qinlan Shen, Daniel Cer, Yun-Hsuan Sung, Brian Strope, and Ray Kurzweil. 2019. Improving multilingual sentence embedding using bi-directional dual encoder with additive margin softmax. *arXiv preprint arXiv:1902.08564*.
- Yinfei Yang, Daniel Matthew Cer, Amin Ahmad, Mandy Guo, Jax Law, Noah Constant, G. Ábrego, Steve Yuan, C. Tar, Yun-Hsuan Sung, B. Strope, and R. Kurzweil. 2020. Multilingual universal sentence encoder for semantic retrieval. In *ACL*.
- Wen-tau Yih, Kristina Toutanova, John C. Platt, and Christopher Meek. 2011. *Learning discriminative projections for text similarity measures*. In *Proceedings of the Fifteenth Conference on Computational Natural Language Learning*, pages 247–256, Portland, Oregon, USA. Association for Computational Linguistics.

A More results

A.1 Comparisons on MS Marco

Table 7 shows the comparisons of GTR models and the baselines. Note that the best RocketQA model used additional augmented data other than MS Marco to improve the model performance while all others do not. Our best GTR-XXL models outperforms RocketQA on both MRR and recall.

Model	NDCG@10	MRR@10	Recall@1000
ANCE	0.388	0.330	0.959
TAS-Balanced	0.408	0.340	0.975
ColBERT	0.401	0.360	0.968
RocketQA	/	0.370	0.979
GTR-Base	0.420	0.366	0.983
GTR-Large	0.430	0.379	0.991
GTR-XL	0.439	0.385	0.989
GTR-XXL	0.442	0.388	0.990

Table 7: Comparisons of different models on MS Marco. Scaling up can improve GTR models’ in-domain performance.

A.2 Recall on BEIR

Table 8 presents the Recall@100 of GTR models and the baselines. Similar to NDCG@10, we observe that scaling up dual encoders lead to significant gains on the BEIR benchmark in terms of recall.

Recall@100 / Model	Lexical / Sparse		Dense					Ours			
	BM25	docT5query	DPR	ANCE	TAS-B	GenQ	ColBERT	GTR-Base	GTR-Large	GTR-XL	GTR-XXL
MS Marco	0.658	0.819	0.552	0.852	0.884	0.884	0.865	0.898	0.908	0.911	0.916
Trec-Covid	0.498	0.541	0.212	0.457	0.387	0.456	0.464	0.411	0.434	0.457	0.407
BioASQ	0.714	0.646	0.256	0.463	0.579	0.627	0.645	0.441	0.490	0.483	0.483
NFCorpus	0.250	0.253	0.208	0.232	0.280	0.280	0.254	0.275	0.298	0.318	0.300
NQ	0.760	0.832	0.880	0.836	0.903	0.862	0.912	0.893	0.930	0.936	0.946
HotpotQA	0.740	0.709	0.591	0.578	0.728	0.673	0.748	0.676	0.725	0.739	0.752
FiQA-2018	0.539	0.598	0.342	0.581	0.593	0.618	0.603	0.670	0.742	0.755	0.780
Signal-1M	0.370	0.351	0.162	0.239	0.304	0.281	0.283	0.263	0.261	0.268	0.268
Trec-News	0.422	0.439	0.215	0.398	0.418	0.412	0.367	0.475	0.525	0.512	0.544
Robust04	0.375	0.357	0.211	0.274	0.331	0.298	0.31	0.324	0.365	0.364	0.372
ArguAna	0.942	0.972	0.751	0.937	0.942	0.978	0.914	0.974	0.978	0.980	0.983
Touché-2020	0.538	0.557	0.301	0.458	0.431	0.451	0.439	0.281	0.282	0.297	0.301
Quora	0.973	0.982	0.470	0.987	0.986	0.988	0.989	0.996	0.996	0.997	0.997
DBPedia-entity	0.398	0.365	0.349	0.319	0.499	0.431	0.461	0.418	0.480	0.480	0.494
SCIDOCS	0.356	0.360	0.219	0.269	0.335	0.332	0.344	0.340	0.358	0.358	0.366
Fever	0.931	0.916	0.840	0.900	0.937	0.928	0.934	0.923	0.941	0.944	0.947
Climate-Fever	0.436	0.427	0.390	0.445	0.534	0.450	0.444	0.522	0.552	0.569	0.556
SciFact	0.908	0.914	0.727	0.816	0.891	0.893	0.878	0.872	0.899	0.911	0.900
CQADupStack	0.606	0.638	0.403	0.579	0.622	0.654	0.624	0.681	0.714	0.729	0.740
Avg	0.601	0.615	0.425	0.559	0.610	0.605	0.604	0.596	0.625	0.632	0.634
Avg w/o MS Marco	0.598	<u>0.603</u>	0.418	0.543	<u>0.594</u>	0.590	0.590	0.580	0.609	0.616	0.619

Table 8: Recall@100 on the BEIR benchmark. The best result on a given dataset is marked in bold.