

MetaTKG: Learning Evolutionary Meta-Knowledge for Temporal Knowledge Graph Reasoning

Yuwei Xia^{1,3}, Mengqi Zhang^{2,4}, Qiang Liu^{2,4*}, Shu Wu^{2,4}, Xiao-Yu Zhang^{1,3*}

¹Institute of Information Engineering, Chinese Academy of Sciences

²Center for Research on Intelligent Perception and Computing (CRIPAC)
National Laboratory of Pattern Recognition (NLPR)

Institute of Automation, Chinese Academy of Sciences

³School of Cyber Security, University of Chinese Academy of Sciences

⁴School of Artificial Intelligence, University of Chinese Academy of Sciences

xiayuwei@iie.ac.cn, mengqi.zhang@cripac.ia.ac.cn

{qiang.liu, shu.wu}@nlpr.ia.ac.cn, zhangxiaoyu@iie.ac.cn

Abstract

Reasoning over Temporal Knowledge Graphs (TKGs) aims to predict future facts based on given history. One of the key challenges for prediction is to learn the evolution of facts. Most existing works focus on exploring evolutionary information in history to obtain effective temporal embeddings for entities and relations, but they ignore the variation in evolution patterns of facts, which makes them struggle to adapt to future data with different evolution patterns. Moreover, new entities continue to emerge along with the evolution of facts over time. Since existing models highly rely on historical information to learn embeddings for entities, they perform poorly on such entities with little historical information. To tackle these issues, we propose a novel Temporal Meta-learning framework for TKG reasoning, MetaTKG for brevity. Specifically, our method regards TKG prediction as many temporal meta-tasks, and utilizes the designed Temporal Meta-learner to learn evolutionary meta-knowledge from these meta-tasks. The proposed method aims to guide the backbones to learn to adapt quickly to future data and deal with entities with little historical information by the learned meta-knowledge. Specially, in temporal meta-learner, we design a Gating Integration module to adaptively establish temporal correlations between meta-tasks. Extensive experiments on four widely-used datasets and three backbones demonstrate that our method can greatly improve the performance.

1 Introduction

Temporal Knowledge Graphs (TKGs) (Boschee et al., 2015) are of great practical values as an effective way to represent the real-world time-evolving facts. In TKGs, the expression of a fact is extended from a triple to a quadruple, such as

*To whom correspondence should be addressed.

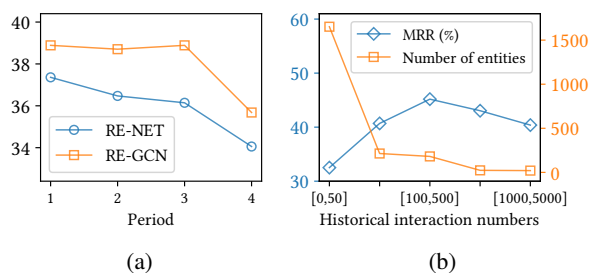


Figure 1: (a) The y-axis is the performance (MRR (%)) of existing TKG models RE-NET and RE-GCN on predicting facts in different time periods. (b) The left y-axis is the performance of RE-NET on predicting entities with different historical interaction numbers. And the right y-axis is the number of entities in each group. The results of both (a) and (b) are obtained based on the widely used TKG dataset ICEWS14.

(Obama, run for, president, 2012). Due to the great practical values of TKGs, related research on TKG reasoning has continued to emerge in recent years. In this paper, we mainly focus on predicting future facts over TKGs, which is beneficial for a wide range of practical scenarios such as health care and financial analysis. Specifically, given a TKG that contains historical facts from t_0 to t_n , we aim to predict new facts at timestamp t with $t > t_n$, such as (Obama, visit, ?, 2014).

The vast majority of existing solutions on TKG reasoning (Trivedi et al., 2017, 2019; Jin et al., 2020; Li et al., 2021) mainly focus on exploring evolutionary information in history to obtain effective temporal embeddings for entities and relations. However, it is far from sufficient to only consider the temporal information for the complex evolution process of facts.

Specifically, due to the diversity of facts, they exhibit various evolution patterns in the evolution process. This brings up the issue that most models

are hard to adapt to future data with different evolution patterns. For example, models trained with facts before COVID-19 are hard to adapt to facts that happen under the circumstance of COVID-19, because the evolution pattern of facts changes with the outbreak of COVID-19. Thus, it is important to learn variations in evolution patterns so as to guide models quickly adapt to future data with diverse evolution patterns. However, existing TKG reasoning models ignore the learning for evolution patterns. From Figure 1a, we can see the performance of existing TKG models drops along time, because models trained on historical data learn the old pattern which is not applicable to future data (You et al., 2021).

Moreover, as facts evolve constantly over time, there will be new entities continuing to emerge during the evolution of facts. Most of these new entities have little historical information and thus are hard to learn. As shown in Figure 1b, we can see that an extremely great number of future entities appear less than 50 times during evolution, and the performance of existing methods on such entities is much worse than others. Hence, improving the performance on entities with little historical information is necessary for prediction. However, most existing methods fail to address the issue, because they highly rely on sufficient historical information to obtain effective temporal embeddings of entities.

To deal with the aforementioned challenges, we propose a novel Temporal meta-learning framework for TKG reasoning, MetaTKG for brevity. MetaTKG is plug-and-play and can be easily applied to most existing backbones for TKG prediction. Specifically, MetaTKG regards TKG prediction as many temporal meta-tasks for training, and utilizes a Temporal Meta-Learner to learn the evolutionary meta-knowledge from these meta-tasks. Specially, each task consists of two KGs with adjacent time stamps in TKGs. In this way, the temporal meta-learner can learn the variation in evolution patterns of two temporally adjacent KGs, which can guide the backbones to learn to adapt quickly to future data with different evolution patterns. Besides, from the learning process of each task, the backbones can derive the meta-knowledge learned from entities with sufficient history to study how to obtain effective embeddings for entities with little historical information. Moreover, we specially design a Gating Integration module in temporal meta-learner according to the characteristics of TKGs,

to adaptively establish the temporal correlations between tasks during the learning process.

To summarize, the major contributions can be listed as follows:

- We illustrate and analyze the critical importance of learning the variations in evolution patterns of facts and new entities with little historical information on TKG reasoning.
- We propose a novel meta-learning framework to learn the evolutionary meta-knowledge for TKG prediction, which can be easily plugged into most existing TKG backbones.
- We conduct extensive experiments on four commonly-used TKG benchmarks and three backbones, which demonstrate that MetaTKG can greatly improve the performance.

2 Related Work

There are mainly two settings in TKG reasoning: interpolation and extrapolation. In this paper, we focus on the latter setting, which aims to predict future facts based on the given history. And we briefly introduce the applications of meta-learning in KGs and TKGs in this section.

TKG Reasoning with extrapolation setting.

Several early attempts such as GHNN (Han et al., 2020), Know-Evolve (Trivedi et al., 2017) and DyRep (Trivedi et al., 2019) build a temporal point process to obtain continuous-time dynamics for TKG reasoning, but they merely focus on continuous-time TKGs. Recently, RE-NET (Jin et al., 2020) models TKGs as sequences, utilizing R-GCNs and RNNs to capture structural and global temporal information, respectively. Following RE-NET, RE-GCN (Li et al., 2021) captures more complex structural dependencies of entities and relations, and utilizes static information to enrich embeddings of entities. Besides, CyGNet (Zhu et al., 2021) proposes a copy-generation mechanism, which utilizes recurrence patterns in history to obtain useful historical information. TANGO (Han et al., 2021b) applies the Neural Ordinary Differential Equations (NODEs) on TKGs to capture continuous temporal information. And CEN (Li et al., 2022) considers the length diversity of history and explores the most optimal history length of each dataset for prediction. Moreover, xERTE (Han et al., 2021a) designs an inference graph to select important entities for prediction, which visualizes the reasoning process. And TITer (Sun et al., 2021) presents a path-search model based on

Reinforcement Learning for TKG prediction. However, all of these models are unable to well adapt to new data with diverse evolution patterns, and fail to learn entities with little historical information.

Meta-Learning in KGs. Meta-learning is regarded as “learning to learn” (Vilalta and Drissi, 2002), which aims to transfer the meta-knowledge so as to make models rapidly adapt to new tasks with some examples. Meta-learning has been wildly used in various fields. In KGs, meta-learning has also been verified its effectiveness. GMatching (Xiong et al., 2018) proposes the problem of few-shot relation in KGs, and applies a metric-based meta-learning to solve the issue by transferring the meta-knowledge from the background information to few-shot relation. Afterward, MetaR (Chen et al., 2019) presents a solution for few-shot relation in KGs following the meta-learning framework, which is independent of the background knowledge compared to GMatching. Recently, some works which follow GMatching to solve the problem of few-shot relation in KGs have emerged, such as FSRL (Zhang et al., 2020), FAAN (Zhang et al., 2020) and GANA (Niu et al., 2021). These works design different neighbor aggregation modules to make improvements on representation learning. However, all of these works are difficult to be adopted for TKGs. OAT (Mirtaheri et al., 2021) is the first attempt to utilize meta-learning to solve the problem of one-shot relation on TKGs, which performs on newly constructed one-shot TKG dataset. OAT generates temporal embeddings of entities and relations with a transformer-based encoder (Vaswani et al., 2017). And the utilization in OAT of meta-learning is similar to KGs, which divides tasks by relations.

Different from these meta-learning works mentioned above, our proposed method focuses on entities with little historical information in TKGs. Moreover, our model does not need to perform on special datasets, which is of more practical values compared to the models that only center on few-shot relations. Besides, though OAT utilizes the meta-learning method, the way it divides tasks still results in its inability to learn the variation in evolution patterns.

3 Preliminaries

In this section, we mainly formulate TKGs and the problem of TKG reasoning, then give brief notations used in this work.

Definition 1 (Temporal Knowledge Graph). Let \mathcal{E} and \mathcal{R} represent a set of entities and relations. A Temporal Knowledge Graph (TKG) \mathcal{G} can be defined as a temporal sequence consisting of KGs with different timestamps, i.e., $\mathcal{G} = \{\mathcal{G}_1, \mathcal{G}_2, \dots, \mathcal{G}_n\}$. Each $\mathcal{G}_t \in \mathcal{G}$ contains facts that occur at time t . And a fact is described as a quadruple (e_s, r, e_o, t) , in which $e_s, e_o \in \mathcal{E}$ and $r \in \mathcal{R}$.

Definition 2 (TKG Reasoning). The task of TKG Reasoning with extrapolation setting can be categorized into *entity prediction* and *relation prediction*. The *entity prediction* task aims to predict the missing object entity of $(e_s, r, ?, t + 1)$ or the missing subject entity of $(?, r, e_o, t + 1)$ given historical KG sequence $\{\mathcal{G}_1, \mathcal{G}_2, \dots, \mathcal{G}_t\}$. Similarly, the *relation prediction* task aims to predict the missing relation of $(e_s, ?, e_o, t + 1)$. In this paper, we mainly evaluate our models on the entity prediction task.

Definition 3 (Backbones for TKG Reasoning). We denote TKG reasoning backbones as a parametrized function f_θ with parameters θ .

Definition 4 (Meta-task). In the traditional setting of meta-learning (Finn et al., 2017), the training process is based on a set of meta-tasks. We denote a meta-task as \mathcal{T}_t . Each meta-task consists of a support set \mathcal{T}_t^s and a query set \mathcal{T}_t^q , which can be denoted as $\mathcal{T}_t = \{\mathcal{T}_t^s, \mathcal{T}_t^q\}$. During the training process of each task \mathcal{T}_t , the backbones are first trained on \mathcal{T}_t^s . Then the backbones are trained on \mathcal{T}_t^q with the feedback from the loss of \mathcal{T}_t^s .

4 Proposed Approach

In this section, we present the proposed MetaTKG in detail. The framework of our model is shown in Figure 2. In MetaTKG, TKG prediction is regarded as many *temporal meta-tasks* for training. The *temporal meta-learner* in our model is built to learn evolutionary meta-knowledge from these meta-tasks. We aim to guide the backbones to learn to adapt quickly to future data and learn to deal with entities with little historical information by the learned meta-knowledge. Moreover, in the *temporal meta-learner*, the *Gating Integration* module shown in the middle part of Figure 2 is specially designed to adaptively capture the temporal correlation between tasks.

4.1 Temporal Meta-tasks

In TKGs, the temporal correlation between \mathcal{G}_{t-1} and \mathcal{G}_t implies the evolutionary changes. According to this, we can learn the variation in evolution

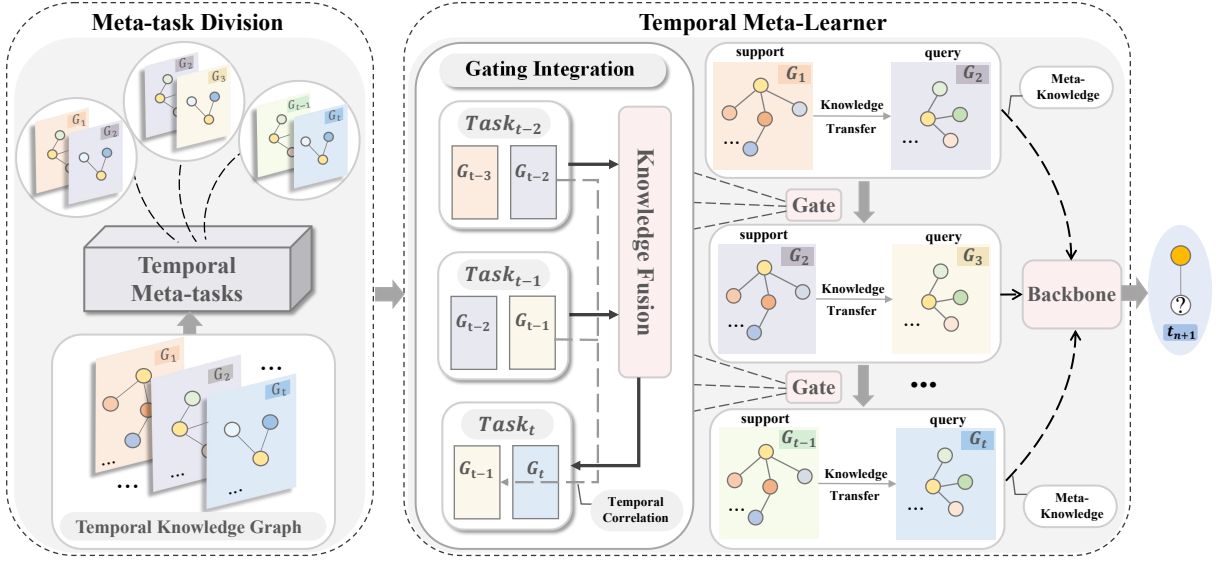


Figure 2: An illustration for MetaTKG. The TKG is firstly divided into many *temporal meta-tasks* (§4.1) for training. Then the *Temporal meta-learner* (§4.2) learns the evolutionary meta-knowledge from these tasks. Specially, according to the temporal characteristics of TKGs, we design a *Gating Integration* (§4.2.1) module to establish the temporal correlations among these tasks. During the learning process of each task, the knowledge gained from former ones will be fused and then transferred to the latter task. Finally, the obtained meta-knowledge from different tasks guides the backbone to learn to quickly adapt to new data for prediction over TKGs.

patterns by learning the evolutionary information in \mathcal{G}_{t-1} and \mathcal{G}_t . Thus, in our model, we regard TKG prediction as many temporal meta-tasks \mathcal{T}_t for training. Each task is designed to consist of two KGs in \mathcal{G} with adjacent time stamps, which is more applicable to the TKG scenario. Formally, a temporal meta-task \mathcal{T}_t can be denoted as:

$$\mathcal{T}_t = \{\mathcal{G}_{t-1}, \mathcal{G}_t\}, \quad (1)$$

where \mathcal{G}_{t-1} is the support set \mathcal{T}_t^s and \mathcal{G}_t is the query set \mathcal{T}_t^q . That is, our training data can be described as $\mathbb{T}_{train} = \{\mathcal{T}_t\}_{t=2}^k$, where each task \mathcal{T}_t corresponds to an individual entity prediction task. Similarly, the validation data and testing data are also composed of temporal meta-tasks, which can be denoted as $\mathbb{T}_{valid} = \{\mathcal{T}_t\}_{t=k+1}^m$ and $\mathbb{T}_{test} = \{\mathcal{T}_t\}_{t=m+1}^n$, respectively.

4.2 Temporal Meta-learner

To learn the evolutionary meta-knowledge from the temporal meta-tasks, inspired by the learning ability of meta-learning in the time series scene (You et al., 2021; Xie et al., 2022), we design a novel temporal meta-learner according to the characteristics of TKGs. The goal of the temporal meta-learner is to guide the backbones quickly adapt to future data by the learned meta-knowledge.

In specific, during the learning process of each \mathcal{T}_t , we first train the backbones on the support set

\mathcal{T}_t^s . And the updated parameter is computed by using one gradient update. Formally, this process can be defined as follows,

$$\theta'_t = \theta_t^s - \alpha \nabla_{\theta_t^s} \mathcal{L}_{\mathcal{T}_t^s} (f_{\theta_t^s}), \quad (2)$$

where θ'_t is the updated parameter on the support set \mathcal{T}_t^s , and θ_t^s represents the initial parameter for training the backbones on \mathcal{T}_t^s . α is a hyper-parameter, which is for controlling the step size.

After obtaining θ'_t updated on \mathcal{T}_t^s and the feedback from the loss of \mathcal{T}_t^s , we train the backbones on the query set \mathcal{T}_t^q by

$$\theta_t = \theta'_t - \beta \nabla_{\theta'_t} \mathcal{L}_{\mathcal{T}_t^q} (f_{\theta'_t}), \quad (3)$$

where θ_t is the updated parameter on the query set of \mathcal{T}_t . And θ'_t represents the initial parameter for training the backbones on \mathcal{T}_t^q . β is a hyper-parameter for controlling the step size. It is to be noted that we learn one meta-task at a time, the initial parameter for learning each \mathcal{T}_t is the updated parameter by previously learned meta-tasks, which will be further described in detail in §4.2.1.

By utilizing such training strategy, the evolutionary meta-knowledge learned from each \mathcal{T}_t can guide the backbones to gradually learn to face new data (the query set \mathcal{T}_t^q) with different evolution patterns from the old data (the support set \mathcal{T}_t^s). In this

way, by continuously learning these tasks one by one, the backbones can learn to quickly adapt to new data by the accumulated meta-knowledge from different tasks. Meanwhile, the meta-knowledge also guides the backbones to learn entities with little historical information with the learning experience from other entities.

4.2.1 Gating Integration

Due to the temporal characteristics of TKGs, meta-tasks in TKG scenario are temporally correlated. That is, the meta-knowledge learned from former meta-tasks is helpful for learning the next one. Thus, in the learning process of meta-tasks, the temporal correlation between them is necessary to be considered. Since such correlation is actually generated by the temporal correlation between KGs with adjacent time stamps in TKGs, the key to establishing the correlation between meta-tasks is to associate temporally adjacent KGs in different tasks. Considering the importance of establishing the temporal correlations, we specially design a gating integration module to effectively build up the temporal correlations between tasks.

Specifically, for the support set of each task, we fuse the updated parameter vector by task \mathcal{T}_{t-1} and \mathcal{T}_{t-2} , taking the fused one as the initial parameter of task \mathcal{T}_t for learning. Formally, the initial parameter θ_t^s in Eq (2) can be calculated as,

$$\theta_t^s = \sigma(g_s) \odot \theta_{t-1} + (1 - \sigma(g_s)) \odot \theta_{t-2}, \quad (4)$$

where g_s is a learn-able gate vector to balance the information of θ_{t-1} and θ_{t-2} . $\sigma(\cdot)$ is the Sigmoid function to project the value of each element into $[0, 1]$, and \odot denotes element-wise multiplication. It is important to note that the parameter g_s is updated with the loss of the support set \mathcal{T}_t^s in Eq (2). Formally,

$$g_s \leftarrow g_s - \alpha \nabla_{g_s} \mathcal{L}_{\mathcal{T}_t^s}(f_{\theta_t^s}). \quad (5)$$

By initializing θ_t^s with the gating module, we can achieve building up temporal correlations for the support set in each task. As shown in the gating integration module of Figure 2, θ_t^s operated on \mathcal{G}_{t-1} (the support set of \mathcal{T}_t) can contain knowledge in θ_{t-2} learned from \mathcal{G}_{t-2} (the query set of \mathcal{T}_{t-2}). Finally, the temporal correlations can be established by temporally associating \mathcal{G}_{t-1} and \mathcal{G}_{t-2} in different tasks. More discussions on temporal correlation for \mathcal{T}_t^s can be seen in Appendix A.

Different from the support set, we simply take the updated parameter θ_{t-1} by \mathcal{T}_{t-1} as the initial parameter θ_t^q in Eq (3) for learning \mathcal{T}_t^q :

$$\theta_t^q = \theta_{t-1}. \quad (6)$$

Noted that the query set $\mathcal{T}_t^q = \mathcal{G}_t$ of \mathcal{T}_t is temporally adjacent with the query set $\mathcal{T}_{t-1}^q = \mathcal{G}_{t-1}$ of task \mathcal{T}_{t-1} . Thus, by simply initializing θ_t^q with θ_{t-1} which contains knowledge learned from \mathcal{G}_{t-1} (the query set of \mathcal{T}_{t-1}), we can establish temporal correlation without gating for \mathcal{T}_t^q by associating \mathcal{G}_t and \mathcal{G}_{t-1} from different tasks.

4.2.2 Component-specific gating parameter

In particular, the gating parameter g_s in the gating integration module is designed to be component-specific, because we consider that parameters in different components should be updated with different frequencies. For example, the parameter of entity embeddings is updated only when the entity appears, the parameter of relation embeddings is updated more frequently, and other parameters in models need to be updated in every meta-task. Thus, we assign different g_s values to entity embedding, relation embedding, and other parameters in the model, respectively.

4.3 Model Evaluation

After training the backbones on all the tasks in \mathcal{T}_{train} , we can obtain the final updated parameter θ_{train} by \mathcal{T}_{train} for testing. The process of testing is similar to training. Specially, to ensure the consistency in time series, we update the parameter θ_{train} on \mathcal{T}_{valid} before testing. Moreover, to enhance the ability of fast adaptations for the backbones plugged with our method, we conduct multi-step gradient updates in the testing phase (Finn et al., 2017). Algorithm 1 provides the pseudo-code of the overall framework.

5 Experiment

In this section, we conduct experiments to evaluate MetaTKG on four typical datasets of temporal knowledge graph and three backbones for TKG prediction. The implementation details can be seen in Appendix B. Then we answer the following questions through experimental results and analyses.

- **Q1:** How does the proposed MetaTKG perform when plugged into existing TKG reasoning models for the entity prediction task?
- **Q2:** How effective is MetaTKG on learning the variations in evolution patterns?

Algorithm 1: Training procedure

Input: \mathcal{T}_{train} : $\{\mathcal{T}_t\}_{t=2}^k$; Initial parameters θ , g_s .

Output: The trained parameters θ_{train} , g_s .

- 1 Initialize θ and g_s randomly;
- 2 **while** not converged **do**
- 3 **for** task \mathcal{T}_t in \mathcal{T}_{train} **do**
- 4 Initialize θ_t^s for learning the support
 set \mathcal{T}_t^s by Eq (4);
- 5 Evaluate $\mathcal{L}_{\mathcal{T}_t^s}(f_{\theta_t^s})$ on \mathcal{T}_t^s ;
- 6 Update θ_t^s and g_s by Eq (2) and Eq
 (5) to obtain the output θ_t^s ;
- 7 Initialize θ_t^q by Eq (6) before
 learning \mathcal{T}_t^q ;
- 8 Evaluate $\mathcal{L}_{\mathcal{T}_t^q}(f_{\theta_t^q})$ by θ_t^s on \mathcal{T}_t^q ;
- 9 Update θ_t^q by Eq (3) to obtain the
 output θ_t^q ;
- 10 **end**
- 11 **end**
- 12 Obtain the final updated parameter on \mathcal{T}_{train}
 as θ_{train} for testing;
- 13 **return** θ_{train}

- **Q3:** How effective is MetaTKG on learning entities with little historical information?
- **Q4:** How does the Gating Integration module affect the performance of MetaTKG?
- **Q5:** How does the number of gradient update steps affect the performance of MetaTKG?

5.1 Experimental Settings

5.1.1 Datasets

We utilize WIKI (Leblay and Chekol, 2018) and three datasets from the Integrated Crisis Early Warning System (Boschee et al., 2015): ICEWS14 (García-Durán et al., 2018), ICEWS18 (Jin et al., 2020) and ICEWS05-15 (García-Durán et al., 2018) to evaluate the effectiveness of our model. Each of the ICEWS dataset is composed of various political facts with time annotations such as (*Barack Obama, visit, Malaysia, 2014/02/19*). ICEWS14, ICEWS18, and ICEWS05-15 record the facts in 2014, 2018, and the facts from 2005 to 2015, respectively. Following (Li et al., 2021), We divide ICEWS14, ICEWS18, ICEWS05-15, and WIKI into training, validation, and testing sets with a proportion of 80%, 10%, and 10% by timestamps. The details of the four datasets are presented in Table 1, where the time gap represents time granu-

Table 1: The statistics of the datasets.

Datasets	ICEWS14	ICEWS05-15	ICEWS18	WIKI
# \mathcal{E}	6,869	10,094	23,033	12,554
# \mathcal{R}	230	251	256	24
# Train	74,845	368,868	373,018	539,286
# Valid	8,514	46,302	45,995	67,538
# Test	7,371	46,159	49,545	63,110
Time gap	24 hours	24 hours	24 hours	1 year

larity between two temporally adjacent facts.

5.1.2 Backbones

Since MetaTKG is plug-and-play, we plug it into several following state-of-the-art TKG reasoning models to evaluate the effectiveness of our model.

RE-NET (Jin et al., 2020) deals with TKGs as KG sequences. RE-NET utilizes the RGCN to capture structural dependencies of entities and relations within each KG. Then RNN is adopted to associate KGs with different time stamps for capturing the temporal dependencies of entities and relations.

RE-GCN (Li et al., 2021) proposes a recurrent evolution module based on relational GNNs to obtain the embeddings which contain dynamic information for entities and relations. Specially, RE-GCN designs a static module that utilizes the static properties of entities to enrich the embeddings for prediction.

CEN (Li et al., 2022) takes the issue of length diversity in TKGs into consideration. CEN utilizes an RGCN-based encoder to learn the embeddings of entities with different history length, and adopts a CNN-based decoder to choose the optimal history length of each dataset for prediction.

5.1.3 Evaluation Metrics

For evaluating our model, we adopt widely used metrics (Jin et al., 2020; Li et al., 2021), MRR and Hits@{1, 3, 10} in experiments. To ensure the fairness of comparison among models, we unify the setting that the ground truth history is utilized during the multi-step inference for all models. Without loss of generality (Li et al., 2021), we only report the experimental results under the raw setting.

5.2 Performance Comparison (RQ1)

Since our model utilizes multi-step updates in the testing phase, we also fine-tune all backbone models with multi-step gradient updates for a fair comparison. The performances of the backbones plugged with MetaTKG, the original backbones,

Table 2: Performance comparison of MetaTKG when plugged into different backbones on four datasets in terms of MRR (%), Hit@1 (%), and Hit@10 (%) (all results are under raw metrics). The highest performance is highlighted in bold. The backbones with * represent the fine-tuned one. $\Delta Improve$ and $\Delta Improve^*$ indicate the relative improvements over the original backbones and fine-tuned backbones in percentage, respectively.

Model	ICEWS14			ICEWS18			ICEWS05-15			WIKI		
	MRR	Hit@1	Hit@10	MRR	Hit@1	Hit@10	MRR	Hit@1	Hit@10	MRR	Hit@1	Hit@10
RE-NET	38.75	28.96	57.61	28.72	18.84	48.18	44.05	33.22	65.02	50.81	40.52	68.59
RE-NET*	39.18	29.43	57.94	28.76	18.79	48.49	47.44	36.13	68.36	52.17	41.37	70.32
RE-NET + MetaTKG	40.87	30.84	60.11	30.19	19.85	50.62	49.15	37.56	70.75	53.28	42.17	71.96
$\Delta Improve$	5.47%	6.50%	4.34%	5.11%	5.35%	5.07%	11.57%	13.07%	8.82%	4.86%	4.06%	4.92%
$\Delta Improve^*$	4.30%	4.78%	3.75%	4.97%	5.62%	4.39%	3.61%	3.97%	3.50%	2.13%	1.93%	2.33%
RE-GCN	41.33	30.61	62.31	31.08	20.44	52.06	46.89	35.5	68.4	51.53	41.1	69.56
RE-GCN*	41.72	31.17	62.41	31.02	20.24	52.15	48.98	37.2	70.91	52.91	41.96	71.32
RE-GCN + MetaTKG	42.76	32.08	63.32	31.6	20.85	52.79	50.00	38.17	71.85	53.54	42.24	72.51
$\Delta Improve$	3.46%	4.80%	1.62%	1.67%	2.01%	1.40%	6.63%	7.52%	5.04%	3.90%	2.77%	4.24%
$\Delta Improve^*$	2.49%	2.92%	2.54%	1.87%	3.01%	1.77%	2.08%	2.61%	2.03%	1.19%	0.67%	1.67%
CEN	40.65	30.36	60.2	28.5	18.6	48.01	45.27	34.18	66.46	49.31	38.96	67.62
CEN*	40.38	30.25	59.73	28.64	18.78	48.31	48.28	36.67	69.89	52.69	41.53	71.62
CEN + MetaTKG	41.64	31.55	60.58	29.7	19.93	48.06	48.77	37.14	70.33	53.42	42.31	71.99
$\Delta Improve$	2.44%	3.92%	0.63%	4.21%	7.15%	0.10%	7.73%	8.66%	5.82%	8.34%	8.60%	6.46%
$\Delta Improve^*$	3.12%	4.30%	1.42%	3.70%	6.12%	-0.52%	1.01%	1.28%	0.63%	1.39%	1.88%	0.52%

and fine-tuned backbones on entity prediction task are shown in Table 2. From the results in Table 2, we have the following observations.

Our proposed method can provide significant improvements on the performance of backbones under most metrics on all datasets, which verifies the effectiveness of our method. For one thing, our method greatly enhances the performance of the original backbones, which indicates that our method can effectively help the backbones learn to adapt quickly to future data with various evolution patterns and alleviate the issue on learning entities with little historical information. For another, though fine-tuning could benefit the performance of backbones for facing new data to some degree, the backbones plugged with our model still significantly outperform the fine-tuned ones. This further illustrates the advantages of our method for learning variations in diverse evolution patterns.

Observing the results of relative improvements over the original backbones, we can find that the improvements on ICEWS05-15 are greater compared with ICEWS14, ICEWS18, and WIKI. It is worth noting that the number of time slices in ICEWS05-15 is much more than other datasets and facts in ICEWS05-15 last shortly (Han et al., 2021b), which implies that these facts may exhibit more diverse evolution patterns and evolve much faster in such a long time. Thus, we analyze the reason for the greater improvements on ICEWS05-15 is that the problem arising from diverse evolution patterns in ICEWS05-15 is more

serious than other datasets. Moreover, though the fine-tuned backbones can achieve great improvements on ICEWS15, our model still outperforms the fine-tuned ones.

5.3 Performance Comparison on Predicting Facts in Different Time Periods (RQ2)

To verify the effectiveness of our model in solving the problem brought by diverse evolution patterns, we evaluate the performance of backbones in different periods on ICEWS14 and ICEWS18. Specifically, we divide ICEWS14 and ICEWS18 into four time periods in chronological order, respectively. In Figure 3, we represent the relative improvements of the backbone plugged with MetaTKG on each period to the original backbone and the fine-tuned one. From the results shown in Figure 3, we can have the following observation.

Compared with the original backbone, we can see that the relative improvement increases over time periods. Combined with Figure 1a, we can infer that the facts in farther periods are more difficult to predict because they exhibit more different distributions than the training set. But our model can help the backbones keep effective over time because the backbones can obtain meta-knowledge from our model by training different temporal meta-tasks, which guides the backbones to learn how to adapt quickly to future data with the knowledge from old data. Moreover, compared with the fine-tuned backbone, we still can obtain the same observation described above. This illustrates that our

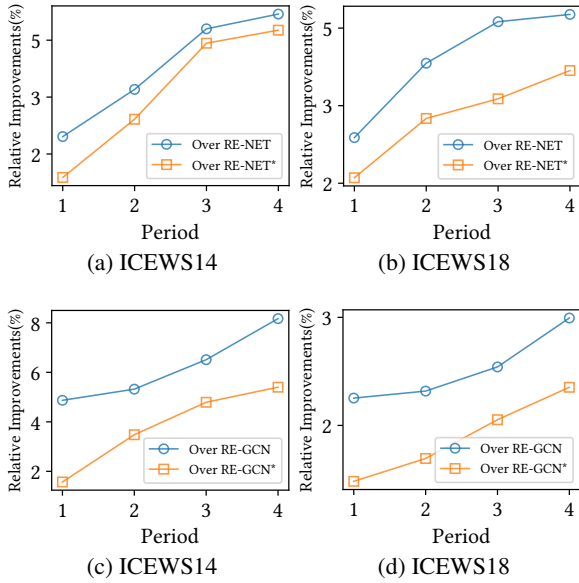


Figure 3: The relative improvements (MRR %) of backbones plugged with MetaTKG over the original and the fine-tuned ones on predicting facts in different periods. The backbone with * represents the relative improvements (%) over the fine-tuned one.

method is much more effective in learning the variations in diverse evolution patterns, which further verifies the effectiveness of MetaTKG.

5.4 Performance Comparison on Predicting Entities with Little Historical Information (RQ3)

We also conduct an experiment to verify the effectiveness of our model in solving the issue brought by entities with little historical information. Specifically, we divide the test sets of ICEWS14 and ICEWS18 into several groups according to the number of historical interactions of entities, respectively. Different groups contain entities with different historical interaction numbers. From the results in Figure 4, we have the following observation.

Compared with both the original backbone and the fine-tuned one, the relative improvement in the group [0, 50] is much higher than in the other groups. This indicates that both the original backbone and the fine-tuned one perform poorly on entities with little historical information, and our model is indeed effective for solving the issue of entity sparsity. We analyze the reason may be that during the training process of meta-tasks, the backbone learns to utilize the knowledge gained from entities with adequate historical information when facing entities with little historical information.

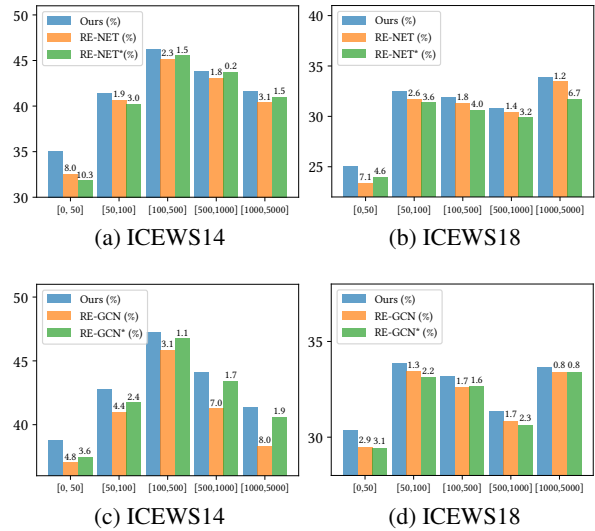


Figure 4: Performance comparison of models on entities with different historical interaction numbers. The y-axis is MRR value, and the x-axis represents groups with different historical interaction numbers of entities. And * represents the fine-tuned one. The numbers on each bar represent the relative improvements (%) of the backbone plugged with MetaTKG to the original backbone and the fine-tuned one, respectively.

5.5 Ablation Studies (RQ4)

We conduct two experiments to investigate the superiority of the gating integration module in MetaTKG and the effectiveness of the component-specific design for the gating parameter.

Ablation Study for Gating Module. To verify the effectiveness of the gating integration module, we compare the performance of the backbones plugged with MetaTKG and MetaTKG-G which removes the gating module. We show the results of all backbones plugged with the two models in Table 3 and obtain the following findings.

Firstly, all backbones plugged with MetaTKG outperform MetaTKG-G on most evaluation metrics, which confirms that the gating integration module can effectively enhance the performance on the entity prediction task. This illustrates the importance of capturing temporal correlation in TKGs scenario by the gating module. Secondly, in the results of all datasets for each backbone, the relative improvement on WIKI is lower compared with other datasets. For WIKI, it is worth noting that facts in WIKI last much longer and do not occur periodically (Han et al., 2021b), which implies that these facts may change slowly. Thus, this observation may indicate that the gating module is

Table 3: Ablation studies on gating integration module in terms of MRR (%) under the raw setting.

Model	ICEWS14	ICEWS05-15	ICEWS18	WIKI
RE-NET + MetaTKG	40.87	30.19	49.15	53.28
RE-NET+MetaTKG-G	39.72	29.18	48.01	52.54
$\Delta Improve$	2.90%	3.46%	2.37%	1.41%
RE-GCN + MetaTKG	42.76	31.60	50.00	53.54
RE-GCN + MetaTKG-G	41.54	31.14	49.36	53.05
$\Delta Improve$	2.94%	1.48%	1.30%	0.92%
CEN + MetaTKG	41.64	29.70	48.77	53.42
CEN + MetaTKG-G	40.86	28.98	48.21	52.98
$\Delta Improve$	1.91%	2.48%	1.16%	0.83%

Table 4: Ablation studies for component-specific gating parameter in terms of MRR (%) under the raw setting.

Model	ICEWS14	ICEWS05-15	ICEWS18	WIKI
RE-NET + MetaTKG	40.87	30.19	49.15	53.28
RE-NET+MetaTKG-C	40.34	29.98	48.51	52.78
$\Delta Improve$	1.31%	0.70%	1.32%	0.95%
RE-GCN + MetaTKG	42.76	31.60	50.00	53.54
RE-GCN + MetaTKG-C	41.98	31.31	49.52	53.21
$\Delta Improve$	1.86%	0.93%	0.97%	0.62%
CEN + MetaTKG	41.64	29.70	48.77	53.42
CEN + MetaTKG-C	40.98	29.21	48.39	53.02
$\Delta Improve$	1.61%	1.68%	0.79%	0.75%

more capable of establishing temporal correlations for datasets in which facts evolve significantly over time.

Ablation Study for Component-specific gating parameter. The gating parameter is the key to determining the performance of the gating integration module. In this experiment, we compare the performance of the backbones plugged with MetaTKG and MetaTKG-C, in which the gating parameter g_s is set to the same value for entity embedding, relation embedding, and other parameters in the model. We show the results of all backbones plugged with the two models in Table 4.

Through the relative improvements, we can find that assigning different g_s values to entity embedding, relation embedding and other parameters in the model can achieve more superior performance on all datasets with different backbones. This demonstrates the robustness and effectiveness of our g_s design.

5.6 Analysis on the effect of the number of gradient update steps (RQ5)

In this section, we study how the multi-step gradient updates affect our model. The performances of backbones plugged with MetaTKG under different multi-step values are shown in Figure 5. We can find that the multi-step updates can enhance the performance of backbones on most datasets.

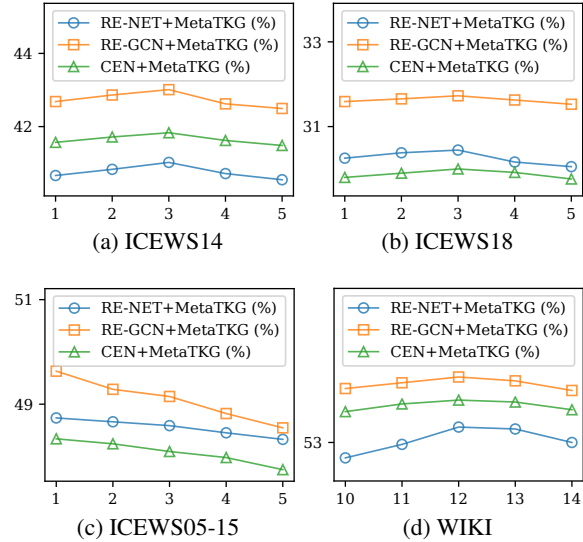


Figure 5: Effect of different gradient update step numbers in the testing phase. The y-axis is MRR value. And the x-axis represents the different number of gradient update steps.

However, compared with the other three datasets, the multi-step updates seem to be less effective on ICEWS05-15. From Table 1, we can find that the number of time slices in ICEWS05-15 is much more than other datasets, but the total number of facts is not larger than others, which indicates that the number of facts in ICEWS05-15 in each time slice is relatively less. Thus, we analyze the reason for the aforementioned observation is that the multi-step updates make the models susceptible to over-fitting when predicting each time slice.

6 Conclusion

In this paper, we have proposed a novel temporal meta-learning framework MetaTKG for TKG reasoning, which can be easily served as a plug-and-play module for most existing TKG prediction models. MetaTKG regards TKG prediction as temporal meta-tasks, and utilizes a Temporal Meta-Learner to learn the evolutionary meta-knowledge from these tasks. MetaTKG aims to guide the backbones to adapt quickly to future data and enhance the performance on entities with little historical information by the learned meta-knowledge. Specially, in the temporal meta-learner, we develop a Gating Integration module to establish temporal correlations between tasks. Extensive experiments on four benchmarks and three state-of-the-art backbones for TKG prediction demonstrate the effectiveness and superiority of MetaTKG.

Limitations

In this section, we discuss the limitation of our model. Specifically, we utilize multi-step gradient updates in the testing phase to enhance the ability of fast adaption for the backbones plugged with our model. In this way, the effectiveness of our model can be more significantly improved compared with one gradient update, but the requirement of GPU resources becomes larger than the original backbones. Moreover, since the model acts on data in one time slice at a time for TKG prediction, multi-step gradient updates tend to cause over-fitting on the dataset in which the number of data in each time slice is small, such as ICEWS05-15.

Acknowledgements

This work is sponsored by National Natural Science Foundation of China (NSFC) (U19B2038, 62141608, 62206291, 61871378, U2003111), and Defense Industrial Technology Development Program (Grant JCKY2021906A001).

References

- Elizabeth Boschee, Jennifer Lautenschlager, Sean O'Brien, Steve Shellman, James Starz, and Michael Ward. 2015. ICEWS Coded Event Data.
- Mingyang Chen, Wen Zhang, Wei Zhang, Qiang Chen, and Huajun Chen. 2019. Meta relational learning for few-shot link prediction in knowledge graphs. In *EMNLP-IJCNLP*, pages 4216–4225.
- Chelsea Finn, Pieter Abbeel, and Sergey Levine. 2017. Model-agnostic meta-learning for fast adaptation of deep networks. In *ICML*, volume 70, pages 1126–1135. PMLR.
- A García-Durán, Sebastijan Dumani, and M. Niepert. 2018. Learning sequence encoders for temporal knowledge graph completion. In *EMNLP*, pages 4816–4821.
- Xavier Glorot and Yoshua Bengio. 2010. Understanding the difficulty of training deep feedforward neural networks. In *AISTATS*, pages 249–256.
- Zhen Han, Peng Chen, Yunpu Ma, and Volker Tresp. 2021a. Explainable subgraph reasoning for forecasting on temporal knowledge graphs. In *ICLR*.
- Zhen Han, Zifeng Ding, Yunpu Ma, Yujia Gu, and Volker Tresp. 2021b. Learning neural ordinary equations for forecasting future links on temporal knowledge graphs. In *EMNLP*, pages 8352–8364.
- Zhen Han, Yunpu Ma, Yuyi Wang, Stephan Günnemann, and Volker Tresp. 2020. Graph hawkes neural network for forecasting on temporal knowledge graphs. In *AKBC*.
- W. Jin, M. Qu, X. Jin, and X. Ren. 2020. Recurrent event network: Autoregressive structure inference over temporal knowledge graphs. In *EMNLP*, pages 6669–6683.
- Diederik P. Kingma and Jimmy Ba. 2015. Adam: A Method for Stochastic Optimization. In *ICLR*.
- Julien Leblay and Melisachew Wudage Chekol. 2018. Deriving validity time in knowledge graph. In *WWW*, pages 1771–1776.
- Zixuan Li, Saiping Guan, Xiaolong Jin, Weihua Peng, Yajuan Lyu, Yong Zhu, Long Bai, Wei Li, Jiafeng Guo, and Xueqi Cheng. 2022. Complex evolutionary pattern learning for temporal knowledge graph reasoning. In *ACL*, pages 290–296.
- Zixuan Li, Xiaolong Jin, Wei Li, Saiping Guan, Jiafeng Guo, Huawei Shen, Yuanzhuo Wang, and Xueqi Cheng. 2021. Temporal knowledge graph reasoning based on evolutionary representation learning. In *SIGIR*, pages 408–417.
- Mehrnoosh Mirtaheri, Mohammad Rostami, Xiang Ren, Fred Morstatter, and Aram Galstyan. 2021. One-shot learning for temporal knowledge graphs. In *AKBC*.
- Guanglin Niu, Yang Li, Chengguang Tang, Ruiying Geng, Jian Dai, Qiao Liu, Hao Wang, Jian Sun, Fei Huang, and Luo Si. 2021. Relational learning with gated and attentive neighbor aggregator for few-shot knowledge graph completion. In *SIGIR*, pages 213–222.
- Adam Paszke, Sam Gross, Francisco Massa, Adam Lerer, James Bradbury, Gregory Chanan, Trevor Killeen, Zeming Lin, Natalia Gimelshein, Luca Antiga, Alban Desmaison, Andreas Kopf, Edward Yang, Zachary DeVito, Martin Raison, Alykhan Tejani, Sasank Chilamkurthy, Benoit Steiner, Lu Fang, Junjie Bai, and Soumith Chintala. 2019. PyTorch: An Imperative Style, High-Performance Deep Learning Library. In *NeurIPS*, pages 8024–8035.
- Haohai Sun, Jialun Zhong, Yunpu Ma, Zhen Han, and Kun He. 2021. TimeTraveler: Reinforcement learning for temporal knowledge graph forecasting. In *EMNLP*, pages 8306–8319.
- Rakshit Trivedi, Hanjun Dai, Yichen Wang, and Le Song. 2017. Know-evolve: Deep temporal reasoning for dynamic knowledge graphs. In *ICML*, pages 3462–3471.
- Rakshit Trivedi, Mehrdad Farajtabar, Prasenjeet Biswal, and Hongyuan Zha. 2019. Dyrep: Learning representations over dynamic graphs. In *ICLR*.
- Ashish Vaswani, Noam Shazeer, Niki Parmar, Jakob Uszkoreit, Llion Jones, Aidan N. Gomez, Lukasz Kaiser, and Illia Polosukhin. 2017. Attention is all you need. In *NIPS*, pages 5998–6008.
- Ricardo Vilalta and Youssef Drissi. 2002. A perspective view and survey of meta-learning. *Artificial intelligence review*, 18(2):77–95.

Ruobing Xie, Yalong Wang, Rui Wang, Yuanfu Lu, Yuanhang Zou, Feng Xia, and Leyu Lin. 2022. Long short-term temporal meta-learning in online recommendation. In *WSDM*, pages 1168–1176.

Wenhan Xiong, Mo Yu, Shiyu Chang, Xiaoxiao Guo, and William Yang Wang. 2018. One-shot relational learning for knowledge graphs. In *EMNLP*, pages 1980–1990.

Xiaoyu You, Mi Zhang, Daizong Ding, Fuli Feng, and Yuanmin Huang. 2021. Learning to learn the future: Modeling concept drifts in time series prediction. In *CIKM*, pages 2434–2443.

Chuxu Zhang, Huaxiu Yao, Chao Huang, Meng Jiang, Zhenhui Li, and Nitesh V. Chawla. 2020. Few-shot knowledge graph completion. In *AAAI*, pages 3041–3048.

Cunchao Zhu, Muhao Chen, Changjun Fan, Guangquan Cheng, and Yan Zhang. 2021. Learning from history: Modeling temporal knowledge graphs with sequential copy-generation networks. In *AAAI*, pages 4732–4740.

Appendix

A Discussion on Temporal Correlation

The meta-task in traditional static scenes is usually independent of each other, especially there are no temporal associations among them in static scenes. Different from this, there are temporal connections among tasks in the scenario of TKGs. For example, the task \mathcal{T}_1 is composed of \mathcal{G}_1 and \mathcal{G}_2 , and \mathcal{T}_2 consists of \mathcal{G}_2 and \mathcal{G}_3 . Obviously, there are temporal connections among time slices G_1 , G_2 and G_3 due to the time-series characteristics of TKG, so the temporal meta-tasks composed of adjacent time slices are certainly temporally associated.

Considering the temporal connection among tasks, the training for the next task may need the knowledge learned from former ones. The easiest way to achieve this is training tasks one by one and initializing the parameter of $\mathcal{T}_t = \{\mathcal{G}_t, \mathcal{G}_{t+1}\}$ with the updated parameter by $\mathcal{T}_{t-1} = \{\mathcal{G}_{t-1}, \mathcal{G}_t\}$. However, temporal connections established in this way are not effective enough because the temporal information between adjacent time slices is unable to utilize. Note that the initial parameter is operated on the support set and the final parameter updated by \mathcal{T}_t is actually operated on the query set of \mathcal{T}_t . That is, if we build up connection in this way, the support set \mathcal{G}_t of the task \mathcal{T}_t will be temporally associated with \mathcal{G}_t instead of \mathcal{G}_{t-1} .

B Implementation Details

We implement our MetaTKG in *Pytorch* (Paszke et al., 2019). We optimize all models with Adam optimizer (Kingma and Ba, 2015), where the learning rates of both support and query set are 0.001 and l_2 regularization λ_2 is set to 10^{-5} . We use the Xavier initializer (Glorot and Bengio, 2010) to initialize parameters. When training, we only conduct a one-step gradient in temporal meta-learner for efficiency. In the testing phase, we conduct multi-step gradient update. We perform grid search for the multi-step on validation set. The optimal multi-step for ICEWS14, ICEWS18, ICEWS05-15, and WIKI are 3, 3, 1, and 12, respectively. The optimal values of multi-step are set the same on all backbone models. All experiments are conducted on NVIDIA Tesla V100 (32G) and Intel Xeon E5-2660.