

# Spectral Probing

Max Müller-Eberstein<sup>②</sup> and Rob van der Goot<sup>②</sup> and Barbara Plank<sup>②,▲,♻️</sup>

<sup>②</sup> Department of Computer Science, IT University of Copenhagen, Denmark

<sup>▲</sup> Center for Information and Language Processing (CIS), LMU Munich, Germany

<sup>♻️</sup> Munich Center for Machine Learning (MCML), Munich, Germany

mamy@itu.dk, robv@itu.dk, b.plank@lmu.de

## Abstract

Linguistic information is encoded at varying timescales (subwords, phrases, etc.) and communicative levels, such as syntax and semantics. Contextualized embeddings have analogously been found to capture these phenomena at distinctive layers and frequencies. Leveraging these findings, we develop a fully learnable frequency filter to identify *spectral profiles* for any given task. It enables vastly more granular analyses than prior handcrafted filters, and improves on efficiency. After demonstrating the informativeness of spectral probing over manual filters in a monolingual setting, we investigate its multilingual characteristics across seven diverse NLP tasks in six languages. Our analyses identify distinctive spectral profiles which quantify cross-task similarity in a linguistically intuitive manner, while remaining consistent across languages—highlighting their potential as robust, lightweight task descriptors.

## 1 Introduction

Analyzing the contextualized embedding representations of pre-trained language models (LMs) using lightweight probes (Hewitt and Liang, 2019; Voita and Titov, 2020) has identified latent features in the untuned encoders which are highly relevant to downstream NLP tasks at various layer depths (Tenney et al., 2019). Orthogonally, linguistic phenomena are also encoded at different timescales: i.e., rapidly changing (sub-)word-level information versus slower changing sentence or paragraph-level information. Decomposing contextualized embeddings into frequencies with different rates of change has yielded initial insights into the timescales at which these task-specific latent phenomena occur (Tamkin et al., 2020). These findings currently rely on handcrafted spectral filters and are limited to English. To enable more efficient analyses of finer-grained, continuous frequency spectra in contextualized representations covering more tasks and languages, this work contributes:

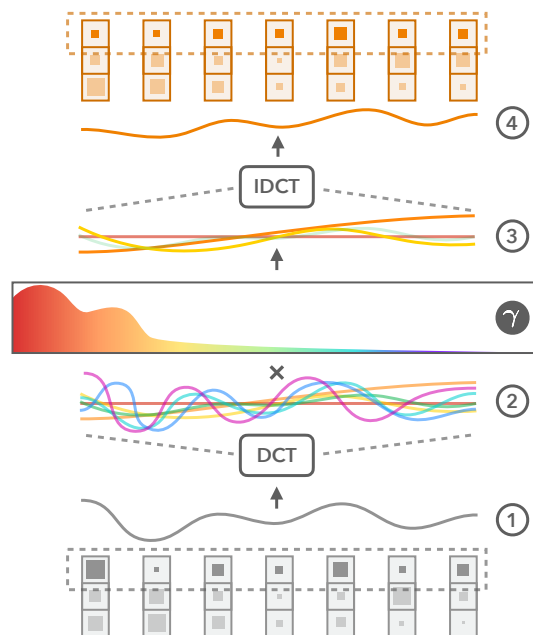


Figure 1: **Visualization of Spectral Probing.** Given a sequence of embedding values ①, decompose into composite frequency waves using DCT ②, apply the learned filter ③, retaining a subset of waves ③, for which IDCT returns the filtered sequence of values ④.

- A fully differentiable spectral probing framework for *learning* which frequencies are relevant for specific NLP tasks (Section 2).<sup>1</sup>
- A multilingual probing study examining timescale characteristics of seven diverse NLP tasks across six languages (Section 3).
- An analysis of the relationships between the spectral profiles of different tasks and their consistency across languages (Section 4).

## 2 Probing for Spectral Profiles

Spectral Probing (Figure 1) builds on established signal processing methods (Ahmed et al., 1974) and recent findings on the manual frequency filtering of

<sup>1</sup>Code at <https://github.com/mainlp/spectral-probing>.

contextual embeddings (Tamkin et al., 2020). The method automatically learns spectral profiles which measure the relevance of specific frequencies to a given task by amplifying or reducing contextual information with different rates of change.

**Discrete Cosine Transform** (Ahmed et al., 1974; DCT) is an invertible method for decomposing any sequence of real values  $\{x_0, \dots, x_{N-1}\}$  (e.g., all values of an embedding dimension) into a weighted sum over cosine waves with different frequencies. The number of frequencies equals the sequence length  $N$ , as the lowest frequency wave is a constant ( $k = 0$ ) and the highest frequency wave completes one cycle every timestep ( $k = N - 1$ ). The coefficient  $X_n^{(k)}$  for a wave at DCT index  $k$  at timestep  $n$  is calculated as:

$$X_n^{(k)} = \sum_{n=0}^{N-1} x_n \cos \left[ \frac{\pi}{N} \left( n + \frac{1}{2} \right) k \right]. \quad (1)$$

Inverting the DCT (IDCT) using all  $X_n^{(k)}$  will return the original sequence. However, weighting coefficients for some  $k$  by 0 will return a filtered version. Zeroing out all  $k$  above a threshold will only retain lower frequencies and make values oscillate with a slow rate of change. Vice-versa, zeroing out all  $k$  below a threshold will only retain higher frequencies—amplifying short-term changes.

**Fixed-band Filters** Applying frequency filters to a sequence of contextualized embeddings extracts linguistic information at different timescales. Within this formulation, the values across each embedding dimension are gathered into a real-valued sequence to which transformations such as the DCT can be applied. In seminal work, Tamkin et al. (2020) apply manually defined low ( $k \in [0, 1]$ ), mid-low ( $k \in [2, 8]$ ), mid ( $k \in [9, 33]$ ), mid-high ( $k \in [34, 129]$ ) and high frequency filters ( $k \in [130, 511]$ ) to English BERT embeddings (Devlin et al., 2019) to investigate how accurately a linear probe can extract task-specific information within certain spectra. Capturing the full picture using manual, fixed-band filters is however not computationally feasible: Relevant frequencies might not lie in a contiguous band, and furthermore, frequencies can not only be turned on or off (i.e., weighted 0 or 1), but can actually be weighted continuously in  $[0, 1]$ .

**Learnable Filters** To capture the complete picture, we propose spectral probing which *learns* a continuous weighting of frequencies relevant to a task. In effect, the spectral filter is a vector  $\gamma \in \mathbb{R}^M$  for which each entry corresponds to the weight assigned to a particular frequency. Before inverting the DCT, each  $X_n^{(k)}$  is multiplied by the sigmoid-scaled weight  $\gamma^{(k)} \in [0, 1]$  which will then retain or filter out frequencies at index  $k$ . As  $M$  depends on the sequence length  $N$ , which changes across inputs, the spectral probe dynamically scales  $\gamma$  to the length at hand using adaptive mean pooling. In practice, we set  $M$  to the maximum input length for our given encoder (e.g., 512 for BERT) and shrink  $\gamma$  appropriately, as a wave cannot cycle more often than there are values. It would however be equally possible to set  $M$  smaller than  $N$  and interpolate the filter up to the length required. Overall,  $\gamma$  is a lightweight parameter which can be easily incorporated between the frozen encoder and probing head, and uses the existing training objective to jointly learn which frequencies to amplify or filter out.

## 3 Experiments

### 3.1 Monolingual

**Setup** Initially, we compare spectral probing to previous fixed-band filters by reproducing the highest and lowest frequency experiments by Tamkin et al. (2020). These are the tasks of tagging parts-of-speech (POS) in the Penn Treebank (Marcus et al., 1993; PTB) as well as classifying TOPICS in the 20 Newsgroups corpus (Lang, 1995; 20News).

On the modeling side, we follow Tamkin et al. (2020) and train a linear probe (Alain and Bengio, 2017) on top of the frozen LM encoder to classify each manually/automatically filtered contextual embedding in an input sequence. This corresponds to probing and evaluating for the amount of task-relevant information in each sub-word across a sequence (e.g., underlying topic contextualization). The bands for the five manual filters follow the original definitions (see Section 2), and we compare them to unfiltered (ORIG) as well as automatically filtered (AUTO) embeddings from our spectral probe (details in Appendix B).

**Results** Figure 2 shows the accuracy (ACC) of the six prior filtering strategies in addition to the learned frequency weightings of the spectral probe. The unfiltered and manually filtered embeddings corroborate previous findings (Tamkin et al., 2020),

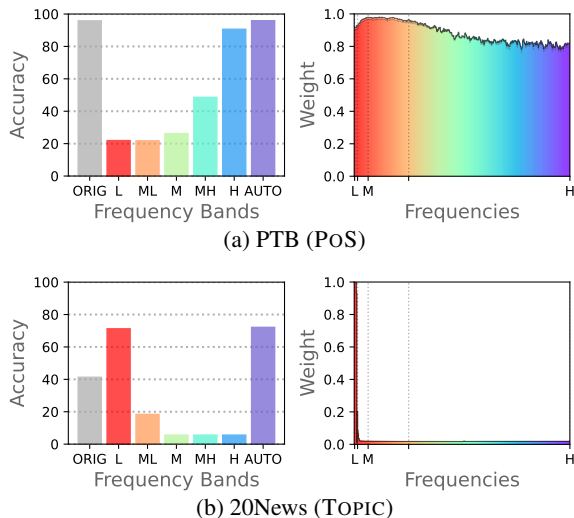


Figure 2: **Monolingual Results on PTB and 20News.** ACC of unfiltered (ORIG), low (L), mid-low (ML), mid (M), mid-high (MH), high (H), and the spectral probe’s automatic filters (AUTO) with frequency weightings.

with high frequencies performing best on POS, and the lowest frequencies performing best on TOPIC.

The spectral probe achieves 95.9% ACC for POS, outperforming ORIG by a 0.1% margin and the best manual filter by 5.2%. The spectral profile in Figure 2a (right) sheds light on why this may be the case: While it also prioritizes high (sub-)word-level frequencies, the learned filter additionally includes surprising amounts of mid-high and lower frequencies, emphasizing the need for both local and global context to achieve high performance.

For TOPIC, the spectral probe achieves 72.1% ACC, outperforming both ORIG (41.3%) and the fixed low-band filter (71.2%). The learned filter (see Figure 2b, right) mirrors the fixed-band results: Only the lowest bands are active, while all higher ones are not. As mid-low frequencies still appear to contain weaker amounts of topic information, the soft inclusion of this region by the spectral probe could account for its performance boost. Overall, spectral probing confirms and refines frequency ranges from prior work while surfacing more detail and requiring no manual probe engineering, with only a single probing run instead of five.

### 3.2 Multilingual

Leveraging spectral probing, we extend timescale analyses beyond English and investigate spectral profiles across more diverse tasks and languages.

**Setup** Each experiment covers German (DE), English (EN), Spanish (ES), French (FR), Japanese

TASK	ORIG	AUTO
POS	92.4±1.9	92.5±1.8
DEP	78.6±4.3	79.3±4.3
NER	88.0±2.7	88.1±2.6
QA	62.9±1.6	67.1±1.2
SENTI	57.4±0.9	64.3±1.1
TOPIC	27.1±8.1	37.2±8.2
NLI	44.1±4.1	56.3±5.6

Table 1: **Multilingual Results** (ACC) of unfiltered (ORIG) and automatically filtered (AUTO) embeddings. Means ± standard deviations over languages and random initializations (details in Appendix C).

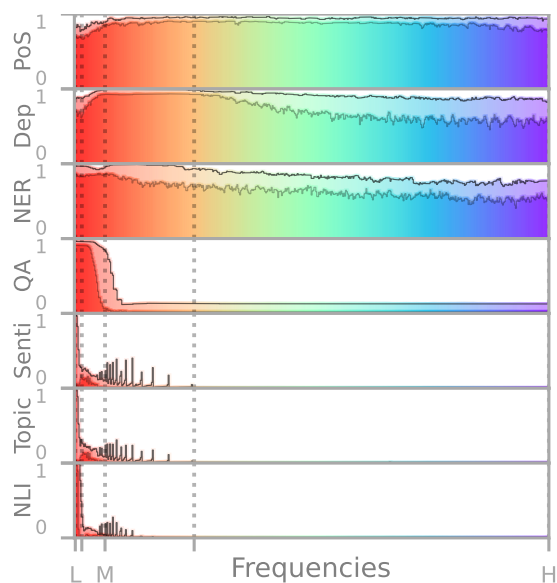


Figure 3: **Spectral Profiles** of all tasks (weight per frequency), with lower and upper bounds across languages.

(JA) and Chinese (ZH). The tasks are POS-tagging and dependency relation classification (DEP) from Universal Dependencies (Zeman et al., 2021); named entity recognition (NER) from WikiANN (Pan et al., 2017); question answering (QA) from MKQA (Longpre et al., 2021); sentiment analysis (SENTI) and TOPIC classification from Multilingual Amazon Reviews (Keung et al., 2020); natural language inference (NLI) from XNLI (Conneau et al., 2018) and JSNLI (Yoshikoshi et al., 2020) for JA (details and examples in Appendix A).

For each language-task combination we train a linear probe on the unfiltered embeddings of multilingual BERT (Devlin et al., 2019; mBERT) and on the automatically filtered representations from our spectral probe. The remaining settings are identical to the monolingual setup (details in Appendix B).

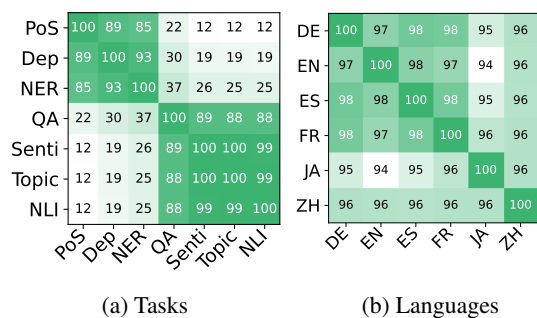


Figure 4: **Filter Overlap across Tasks/Languages** as measured in percentage-normalized L1 distance.

**Results** Table 1 shows equivalent or higher ACC for the spectral filter compared to the unfiltered embeddings for all tasks and languages. This increase is less pronounced for token-level tasks, but much larger for tasks where sequence-level information is critical. Figure 3 visualizes how POS, DEP and NER retain large parts of the original spectrum, while QA, SENTI, TOPIC and NLI appear to benefit from filtering out higher frequencies. This shows how tasks exhibit structures at different timescales and that spectral probing is able to identify these communicative levels consistently not only in English, but also across languages—an effect which we analyze more extensively next.

#### 4 Spectral Profiling Analysis

Each task’s distinct spectral profile (Figure 3) allows us to analyze their relation to the timescale hierarchy of linguistic structures, and quantify cross-task similarities within and across languages. For this we use the percentage-normalized L1 distance (i.e., 0%–100% overlap) between filters (Figure 4).

**Cross-task Overlap** Overall, we observe a dichotomy between broad-frequency, token-level tasks and low-frequency, sequence-level tasks (Figures 3 and 4a). In addition, there appears to be a hierarchy which depends on the timescales of the linguistic structures involved. Notably, compared to prior fixed-band filters, none of the learned filters fully excludes low frequencies. For instance, high-frequency information is most important to retrieve POS, but reaching the performance of the original embeddings also requires some lower-frequency information—most likely to disambiguate difficult cases based on sentence-level context.

DEP appears to benefit the least from both lower and higher-frequency information. Instead, the strong weight on mid-high frequencies matches the

fact that dependency relations span multiple words and benefit from information at the phrase-level. NER sees a further decrease in high-frequency information, coupled with an uptick in lower frequencies. We hypothesize that phrase and sentence-level information become more important for disambiguating certain entity types (e.g., ORG and LOC). Across the token-level tasks this shift from higher to lower frequencies is also reflected in filter overlap which decreases from syntactic to semantic token-level tasks, while their overlap with sentence-level tasks increases (Figure 4a).

The sequence-level tasks share low-frequency spectral profiles which overlap more with each other than do the token-level tasks. In fact, SENTI and TOPIC overlap almost perfectly (although the latter involves less mid-range frequencies). This similarity is unlikely to be the result of the shared underlying dataset as both tasks also overlap with the unrelated XNLI and JSNLI datasets. At the same time, the POS and DEP tasks, which also share datasets, have a lower overlap despite being based on the exact same inputs. Overall, SENTI, TOPIC and NLI all appear to rely on information which is consistent across a sequence—explaining why simple methods such as mean-pooled sentence embeddings can be effective in these scenarios.

QA provides an intermediate case: While it is reliant on low frequencies it also includes more mid-low and a small amount of higher frequency information. This is reflected in Figure 4a, where it shares more overlap with the token-level tasks than all other sequence-level tasks. Since probing for the correctness of a question-answer pair is dependent on finer-grained information than the general sentiment, topic or semantic coherence of a sequence, this inclusion of higher frequency information matches linguistic intuitions.

**Cross-lingual Consistency** Finally, we investigate the similarity of learned spectral profiles across languages. While Figure 3 shows that there is some variance between the filters of different languages within a task, Figure 4b shows that actual quantitative overlap between languages is high, ranging from 94%–98%. This holds even across distinctive pairs such as JA-EN which differ substantially in factors such as sub-word length and distance between syntactic dependents. This strong consistency highlights the potential for spectral profiles to provide language-agnostic features for task characterization and comparison.



## 5 Conclusion

Linguistic information at different timescales is an, as of yet, underexplored dimension in contextualized embeddings. We propose a fully differentiable *spectral probe* which automatically learns to weigh frequencies that are relevant to a specific task and improves over prior fixed-band filters by capturing continuous mixtures over frequencies (Section 2). This enables us to not only outperform the manual filters while using one probe instead of five, but to also identify that high-frequency tasks still benefit from low-frequency information (Section 3.1).

Extending spectral probing to seven tasks in six languages, we trained task-specific filters which outperformed the original, unfiltered embeddings. The resulting spectral profiles furthermore shed light onto how linguistic information at different timescales relates to different task types (Section 3.2). They not only match the linguistic intuitions underlying each task, but also enable quantitative comparisons between them. The analysis of the filters’ overlap surfaced a clear dichotomy between token and sequence-level tasks, but also highlighted intersecting frequency ranges which contain information relevant across task types. Finally, the language-agnostic nature of these spectral profiles highlights future avenues towards more robust task descriptors (Section 4).

### Limitations

Our experiments cover a diverse, but non-exhaustive set of NLP tasks and languages. While more extensive than prior related work (Tenney et al., 2019; Tamkin et al., 2020), we elaborate in the following regarding the motivation of the final setup: As the aim of our study was to investigate the cross-lingual properties of the underexplored timescale dimension of contextualized representations, the set of languages and tasks used in our experiments emphasizes consistency across languages. This limits us to high-resource languages for which datasets covering every task are available. However, with cross-lingual stability confirmed in our experiments, the study of lower-resourced languages is a clear avenue for future research.

Despite using a set of well-established datasets, it is important to keep data quality in mind when interpreting the results—even for these high-resource languages. In our initial exploratory data analyses, we identified and confirmed limitations known to the original dataset authors in that many include



silver, or weakly filtered annotations driven by automatic matching and translation (e.g., WikiANN, XNLI, JSNLI). As we are less interested in benchmarking performance and rather focus on the feasibility and analysis of our spectral profiles, individual data instances of lesser quality should however be of limited concern. Appendix A details how each dataset was constructed originally, and also how it was pre-processed by us, such that results can be interpreted in the appropriate context.

In terms of modeling, we hope that future work will investigate spectral probes and their resulting task profiles across more encoder models with different architectures and pre-training strategies. Finally, while we have demonstrated spectral profiles to be suitable for characterizing different tasks consistently across languages, future research could supplement them with other descriptors such as embedding layer depth in order to identify even more distinctive profiles.

### Ethics Statement

Given the theoretical nature and wide applicability of this work—both in terms of data domains and model architectures—it is difficult to anticipate broader impacts and future ethical implications. In general, benefits and harms in the field of probing originate from the information being investigated: While we are interested in linguistic timescale characteristics, probe-like methods have also been applied to protected attributes of data subjects in order to, for example, de-bias LMs (Ravfogel et al., 2020). Since this process involves personal information, any experiments extracting such characteristics should be sufficiently vetted for ethical acceptability. With spectral profiles being a relatively broad descriptor however, we do not expect them to identify frequencies exclusive to personal information or to replace existing, domain-specific probing methods.

### Acknowledgements

Thanks to  NLPnorth and  MaiNLP Lab for their insightful feedback, particularly Elisa Bassigiana, Joris Baan, Mike Zhang, as well as to ITU’s High-performance Computing Team. Additional thanks to the anonymous reviewers for their helpful comments. MME and BP are supported by the Independent Research Fund Denmark (DFF) Sapere Aude grant 9063-00077B. BP is supported by the ERC Consolidator Grant DIALECT 101043235.

## References

- Nasir Ahmed, T. Natarajan, and Kamisetty Ramamohan Rao. 1974. **Discrete cosine transform**. *IEEE Transactions on Computers*, C-23(1):90–93.
- Guillaume Alain and Yoshua Bengio. 2017. **Understanding intermediate layers using linear classifier probes**. In *5th International Conference on Learning Representations, ICLR 2017, Toulon, France, April 24-26, 2017, Workshop Track Proceedings*. OpenReview.net.
- Masayuki Asahara, Hiroshi Kanayama, Takaaki Tanaka, Yusuke Miyao, Sumire Uematsu, Shinsuke Mori, Yuji Matsumoto, Mai Omura, and Yugo Murawaki. 2018. **Universal Dependencies version 2 for Japanese**. In *Proceedings of the Eleventh International Conference on Language Resources and Evaluation (LREC 2018)*, Miyazaki, Japan. European Language Resources Association (ELRA).
- Samuel R. Bowman, Gabor Angeli, Christopher Potts, and Christopher D. Manning. 2015. **A large annotated corpus for learning natural language inference**. In *Proceedings of the 2015 Conference on Empirical Methods in Natural Language Processing*, pages 632–642, Lisbon, Portugal. Association for Computational Linguistics.
- Sabine Brants, Stefanie Dipper, Peter Eisenberg, Silvia Hansen-Schirra, Esther König, Wolfgang Lezius, Christian Rohrer, George Smith, and Hans Uszkoreit. 2004. TIGER: Linguistic interpretation of a german corpus. *Research on language and computation*, 2(4):597–620.
- Alexis Conneau, Ruty Rinott, Guillaume Lample, Adina Williams, Samuel Bowman, Holger Schwenk, and Veselin Stoyanov. 2018. **XNLI: Evaluating cross-lingual sentence representations**. In *Proceedings of the 2018 Conference on Empirical Methods in Natural Language Processing*, pages 2475–2485, Brussels, Belgium. Association for Computational Linguistics.
- Jacob Devlin, Ming-Wei Chang, Kenton Lee, and Kristina Toutanova. 2019. **BERT: Pre-training of deep bidirectional transformers for language understanding**. In *Proceedings of the 2019 Conference of the North American Chapter of the Association for Computational Linguistics: Human Language Technologies, Volume 1 (Long and Short Papers)*, pages 4171–4186, Minneapolis, Minnesota. Association for Computational Linguistics.
- Bruno Guillaume, Marie-Catherine de Marneffe, and Guy Perrier. 2019. Conversion et améliorations de corpus du Français annotés en Universal Dependencies. *Traitement Automatique des Langues*, 60(2):71–95.
- Charles R. Harris, K. Jarrod Millman, Stéfan J. van der Walt, Ralf Gommers, Pauli Virtanen, David Cournapeau, Eric Wieser, Julian Taylor, Sebastian Berg, Nathaniel J. Smith, Robert Kern, Matti Picus, Stephan Hoyer, Marten H. van Kerkwijk, Matthew Brett, Allan Haldane, Jaime Fernández del Río, Mark Wiebe, Pearu Peterson, Pierre Gérard-Marchant, Kevin Sheppard, Tyler Reddy, Warren Weckesser, Hameer Abbasi, Christoph Gohlke, and Travis E. Oliphant. 2020. **Array programming with NumPy**. *Nature*, 585(7825):357–362.
- John Hewitt and Percy Liang. 2019. **Designing and interpreting probes with control tasks**. In *Proceedings of the 2019 Conference on Empirical Methods in Natural Language Processing and the 9th International Joint Conference on Natural Language Processing (EMNLP-IJCNLP)*, pages 2733–2743, Hong Kong, China. Association for Computational Linguistics.
- Ziyang Hu. 2018. **Discrete Cosine Transform for PyTorch**. <https://github.com/zh217/torch-dct>.
- J. D. Hunter. 2007. **Matplotlib: A 2d graphics environment**. *Computing in Science & Engineering*, 9(3):90–95.
- Phillip Keung, Yichao Lu, György Szarvas, and Noah A. Smith. 2020. **The multilingual Amazon reviews corpus**. In *Proceedings of the 2020 Conference on Empirical Methods in Natural Language Processing (EMNLP)*, pages 4563–4568, Online. Association for Computational Linguistics.
- Diederik P. Kingma and Jimmy Ba. 2014. **Adam: A method for stochastic optimization**. *Computing Research Repository*, arxiv:1412.6980. Version 9.
- Ken Lang. 1995. Newsweeder: Learning to filter news. In *Proceedings of the Twelfth International Conference on Machine Learning*, pages 331–339. Retrieved from <http://qwone.com/~jason/20Newsgroups/> on Feb 10th, 2022.
- Shayne Longpre, Yi Lu, and Joachim Daiber. 2021. **MKQA: A linguistically diverse benchmark for multilingual open domain question answering**. *Transactions of the Association for Computational Linguistics*, 9:1389–1406.
- Mitchell P. Marcus, Beatrice Santorini, and Mary Ann Marcinkiewicz. 1993. **Building a large annotated corpus of English: The Penn Treebank**. *Computational Linguistics*, 19(2):313–330.
- Ryan McDonald, Joakim Nivre, Yvonne Quirmbach-Brundage, Yoav Goldberg, Dipanjan Das, Kuzman Ganchev, Keith Hall, Slav Petrov, Hao Zhang, Oscar Täckström, Claudia Bedini, Núria Bertomeu Castelló, and Jungmee Lee. 2013. **Universal Dependency annotation for multilingual parsing**. In *Proceedings of the 51st Annual Meeting of the Association for Computational Linguistics (Volume 2: Short Papers)*, pages 92–97, Sofia, Bulgaria. Association for Computational Linguistics.
- Xiaoman Pan, Boliang Zhang, Jonathan May, Joel Nothman, Kevin Knight, and Heng Ji. 2017. **Cross-lingual**

- name tagging and linking for 282 languages. In *Proceedings of the 55th Annual Meeting of the Association for Computational Linguistics (Volume 1: Long Papers)*, pages 1946–1958, Vancouver, Canada. Association for Computational Linguistics.
- Adam Paszke, Sam Gross, Francisco Massa, Adam Lerer, James Bradbury, Gregory Chanan, Trevor Killeen, Zeming Lin, Natalia Gimelshein, Luca Antiga, Alban Desmaison, Andreas Kopf, Edward Yang, Zachary DeVito, Martin Raison, Alykhan Tejani, Sasank Chilamkurthy, Benoit Steiner, Lu Fang, Junjie Bai, and Soumith Chintala. 2019. **PyTorch: An imperative style, high-performance deep learning library**. In *Advances in Neural Information Processing Systems 32*, pages 8024–8035. Curran Associates, Inc.
- Shauli Ravfogel, Yanai Elazar, Hila Gonen, Michael Twiton, and Yoav Goldberg. 2020. **Null it out: Guarding protected attributes by iterative nullspace projection**. In *Proceedings of the 58th Annual Meeting of the Association for Computational Linguistics*, pages 7237–7256, Online. Association for Computational Linguistics.
- Mo Shen, Ryan McDonald, Daniel Zeman, and Peng Qi. 2016. UD\_Chinese-GSD. [https://github.com/UniversalDependencies/UD\\_Chinese-GSD](https://github.com/UniversalDependencies/UD_Chinese-GSD).
- Natalia Silveira, Timothy Dozat, Marie-Catherine de Marneffe, Samuel Bowman, Miriam Connor, John Bauer, and Chris Manning. 2014. **A gold standard dependency corpus for English**. In *Proceedings of the Ninth International Conference on Language Resources and Evaluation (LREC'14)*, pages 2897–2904, Reykjavik, Iceland. European Language Resources Association (ELRA).
- Alex Tamkin, Dan Jurafsky, and Noah Goodman. 2020. **Language through a prism: A spectral approach for multiscale language representations**. In *Advances in Neural Information Processing Systems*, volume 33, pages 5492–5504. Curran Associates, Inc.
- Ian Tenney, Dipanjan Das, and Ellie Pavlick. 2019. **BERT rediscovers the classical NLP pipeline**. In *Proceedings of the 57th Annual Meeting of the Association for Computational Linguistics*, pages 4593–4601, Florence, Italy. Association for Computational Linguistics.
- Elena Voita and Ivan Titov. 2020. **Information-theoretic probing with minimum description length**. In *Proceedings of the 2020 Conference on Empirical Methods in Natural Language Processing (EMNLP)*, pages 183–196, Online. Association for Computational Linguistics.
- Thomas Wolf, Lysandre Debut, Victor Sanh, Julien Chaumond, Clement Delangue, Anthony Moi, Pierric Cistac, Tim Rault, Remi Louf, Morgan Funtowicz, Joe Davison, Sam Shleifer, Patrick von Platen, Clara Ma, Yacine Jernite, Julien Plu, Canwen Xu, Teven Le Scao, Sylvain Gugger, Mariama Drame, Quentin Lhoest, and Alexander Rush. 2020. **Transformers: State-of-the-art natural language processing**. In *Proceedings of the 2020 Conference on Empirical Methods in Natural Language Processing: System Demonstrations*, pages 38–45, Online. Association for Computational Linguistics.
- Takumi Yoshikoshi, Daisuke Kawahara, and Sadao Kurohashi. 2020. Multilingualization of a natural language inference dataset using machine translation. *Proceedings of the 244th Meeting of Natural Language Processing*, pages 1–8. (Translated from Japanese original).
- Daniel Zeman, Joakim Nivre, Mitchell Abrams, Elia Ackermann, Noëmi Aepli, Hamid Aghaei, Željko Agić, Amir Ahmadi, Lars Ahrenberg, Chika Kennedy Ajede, Gabrielë Aleksandravičiūtė, Ika Alfina, Lene Antonsen, Katya Aplonova, Angelina Aquino, Carolina Aragon, Maria Jesus Aranzabe, Bilge Nas Arıcan, Hórunn Arnardóttir, Gashaw Arutie, Jessica Naraiswari Arwidarasti, Masayuki Asahara, Deniz Baran Aslan, Luma Ateyah, Furkan Atmaca, Mohammed Attia, Aitziber Atutxa, Liesbeth Augustinus, Elena Badmaeva, Keerthana Balasubramani, Miguel Ballesteros, Esha Banerjee, Sebastian Bank, Verginica Barbu Mititelu, Starkađur Barkarson, Rodolfo Basile, Victoria Basmov, Colin Batchelor, John Bauer, Seyyit Talha Bedir, Kepa Bengoetxea, Gözde Berk, Yevgeni Berzak, Irshad Ahmad Bhat, Riyaz Ahmad Bhat, Erica Biagetti, Eckhard Bick, Agnè Bielinskienė, Kristín Bjarnadóttir, Rogier Blokland, Victoria Bobicev, Loïc Boizou, Emanuel Borges Völker, Carl Börstell, Cristina Bosco, Gosse Bouma, Sam Bowman, Adriane Boyd, Anouck Braggaar, Kristina Brokaitė, Aljoscha Burchardt, Marie Candito, Bernard Caron, Gauthier Caron, Lauren Cassidy, Tatiana Cavalcanti, Gülşen Cebirođlu Eryiđit, Flavio Massimiliano Cecchini, Giuseppe G. A. Celano, Slavomír Čéplö, Neslihan Cesur, Savas Cetin, Özlem Çetinođlu, Fabricio Chalub, Shweta Chauhan, Ethan Chi, Taishi Chika, Yongseok Cho, Jinho Choi, Jayeol Chun, Juyeon Chung, Alessandra T. Cignarella, Silvie Cinková, Aurélie Collomb, Çađrı Çöltekin, Miriam Connor, Marine Courtin, Mihaela Cristescu, Philemon Daniel, Elizabeth Davidson, Marie-Catherine de Marneffe, Valeria de Paiva, Mehmet Oguz Derin, Elvis de Souza, Arantza Diaz de Ilarraza, Carly Dickerson, Arawinda Dinakaramani, Elisa Di Nuovo, Bamba Dione, Peter Dirix, Kaja Dobrovoljc, Timothy Dozat, Kira Droganova, Puneet Dwivedi, Hanne Eckhoff, Sandra Eiche, Marhaba Eli, Ali Elkahky, Binyam Ephrem, Olga Erina, Tomaž Erjavec, Aline Etienne, Wograine Evelyn, Sidney Facundes, Richárd Farkas, Jannatul Ferdousi, Marília Fernanda, Hector Fernandez Alcalde, Jennifer Foster, Cláudia Freitas, Kazunori Fujita, Katarína Gajdošová, Daniel Galbraith, Marcos Garcia, Moa Gärdenfors, Sebastian Garza, Fabrício Ferraz Gerardi, Kim Gerdes, Filip Ginter, Gustavo Godoy, Iakes Goenaga, Koldo Gojenola, Memduh Gökırmak, Yoav Goldberg, Xavier Gómez Guino-



gart, Berta González Saavedra, Bernadeta Griciūtė, Matias Grioni, Loïc Grobol, Normunds Grūzītis, Bruno Guillaume, Céline Guillot-Barbance, Tunga Güngör, Nizar Habash, Hinrik Hafsteinsson, Jan Hajič, Jan Hajič jr., Mika Hämäläinen, Linh Hà Mỹ, Na-Rae Han, Muhammad Yudistira Hanifmuti, Sam Hardwick, Kim Harris, Dag Haug, Johannes Heinicke, Oliver Hellwig, Felix Hennig, Barbora Hladká, Jaroslava Hlaváčová, Florinel Hociung, Petter Hohle, Eva Huber, Jena Hwang, Takumi Ikeda, Anton Karl Ingason, Radu Ion, Elena Irimia, Olájdé Ishola, Kaoru Ito, Siratun Jannat, Tomáš Jelínek, Apoorva Jha, Anders Johannsen, Hildur Jónsdóttir, Fredrik Jørgensen, Markus Juutinen, Sarveswaran K, Hüner Kaşıkara, Andre Kaasen, Nadezhda Kabaeva, Sylvain Kahane, Hiroshi Kanayama, Jenna Kanerva, Neslihan Kara, Boris Katz, Tolga Kayadelen, Jessica Kenney, Václava Kettnerová, Jesse Kirchner, Elena Klementieva, Elena Klyachko, Arne Köhn, Abdullatif Köksal, Kamil Kopacewicz, Timo Korkiakangas, Mehmet Köse, Natalia Kotsyba, Jolanta Kovalevskaitė, Simon Krek, Parameswari Krishnamurthy, Sandra Kübler, Oğuzhan Kuyrukçu, Aslı Kuzgun, Sookyoung Kwak, Veronika Laippala, Lucia Lam, Lorenzo Lambertino, Tatiana Lando, Septina Dian Larasati, Alexei Lavrentiev, John Lee, Phuong Lê Hồng, Alessandro Lenci, Saran Lertpradit, Herman Leung, Maria Levina, Cheuk Ying Li, Josie Li, Keying Li, Yuan Li, KyungTae Lim, Bruna Lima Padovani, Krister Lindén, Nikola Ljubešić, Olga Loginova, Stefano Lusito, Andry Luthfi, Mikko Luukko, Olga Lyashevskaya, Teresa Lynn, Vivien Macketanz, Menel Mahamdi, Jean Maillard, Aibek Makazhanov, Michael Mandl, Christopher Manning, Ruli Manurung, Büşra Marşan, Cătălina Mărănduc, David Mareček, Katrin Marheinecke, Héctor Martínez Alonso, Lorena Martín-Rodríguez, André Martins, Jan Mašek, Hiroshi Matsuda, Yuji Matsumoto, Alessandro Mazzei, Ryan McDonald, Sarah McGuinness, Gustavo Mendonça, Tatiana Merzhevich, Niko Miekka, Karina Mischenkova, Margarita Misirpashayeva, Anna Missilä, Cătălin Mititelu, Maria Mitrofan, Yusuke Miyao, AmirHosseini Mojiri Foroushani, Judit Molnár, Amirsaïed Moloodi, Simonetta Montemagni, Amir More, Laura Moreno Romero, Giovanni Moretti, Keiko Sophie Mori, Shinsuke Mori, Tomohiko Morioka, Shigeki Moro, Bjartur Mortensen, Bohdan Moskalevskyi, Kadri Muischnek, Robert Munro, Yugo Murawaki, Kaili Müürisep, Pinkey Nainwani, Mariam Nakhlé, Juan Ignacio Navarro Horñiáček, Anna Nedoluzhko, Gunta Nešpore-Bērzkalne, Manuela Nevaci, Luong Nguyễn Thị, Huyèn Nguyễn Thị Minh, Yoshihiro Nikaido, Vitaly Nikolaev, Rattima Nitisaroj, Alireza Nourian, Hanna Nurmi, Stina Ojala, Atul Kr. Ojha, Adédayo Olúòkun, Mai Omura, Emeka Onwuegbuzia, Petya Osenova, Robert Östling, Lilja Övrelid, Şaziye Betül Özateş, Merve Özçelik, Arzucan Özgür, Balkız Öztürk Başaran, Hyunji Hayley Park, Niko Partanen, Elena Pascual, Marco Passarotti, Agnieszka Patejuk, Guilherme Paulino-Passos, Angelika Peljak-Łapińska, Siyao Peng, Cene-Augusto Perez, Natalia Perkova, Guy Per-

rier, Slav Petrov, Daria Petrova, Jason Phelan, Jussi Piitulainen, Tommi A Pirinen, Emily Pitler, Barbara Plank, Thierry Poibeau, Larisa Ponomareva, Martin Popel, Lauma Pretkalnina, Sophie Prévost, Prokopis Prokopidis, Adam Przepiórkowski, Tina Puolakainen, Sampo Pyysalo, Peng Qi, Andriela Rääbis, Alexandre Rademaker, Mizanur Rahman, Taraka Rama, Loganathan Ramasamy, Carlos Ramisch, Fam Rashel, Mohammad Sadegh Rasooli, Vinit Ravishankar, Livy Real, Petru Rebeja, Siva Reddy, Mathilde Regnault, Georg Rehm, Ivan Riabov, Michael Rießler, Erika Rimkutė, Larissa Rinaldi, Laura Rituma, Putri Rizqiyah, Luisa Rocha, Eiríkur Rögnvaldsson, Mykhailo Romanenko, Rudolf Rosa, Valentin Roşca, Davide Rovati, Olga Rudina, Jack Rueter, Kristján Rúnarsson, Shoval Sadde, Pegah Safari, Benoît Sagot, Aleksi Sahala, Shadi Saleh, Alessio Salomoni, Tanja Samardžić, Stephanie Samson, Manuela Sanguinetti, Ezgi Sanıyar, Dage Särg, Baiba Saulīte, Yanin Sawanakunanon, Shefali Saxena, Kevin Scannell, Salvatore Scarlata, Nathan Schneider, Sebastian Schuster, Lane Schwartz, Djamé Seddah, Wolfgang Seeker, Mojgan Seraji, Syeda Shahzadi, Mo Shen, Atsuko Shimada, Hiroyuki Shirasu, Yana Shishkina, Muh Shohibussirri, Dmitry Sichinava, Janine Siewert, Einar Freyr Sigurðsson, Aline Silveira, Natalia Silveira, Maria Simi, Radu Simionescu, Katalin Simkó, Mária Šimková, Kiril Simov, Maria Skachedubova, Aaron Smith, Isabela Soares-Bastos, Shafi Sourov, Carolyn Spadine, Rachele Sprugnoli, Steinhórfur Steingrímsson, Antonio Stella, Milan Straka, Emmett Strickland, Jana Strnadová, Alane Suhr, Yogi Lesmana Sulestio, Umur Sulubacak, Shingo Suzuki, Zsolt Szántó, Chihiro Taguchi, Dima Taji, Yuta Takahashi, Fabio Tamburini, Mary Ann C. Tan, Takaaki Tanaka, Dipta Tanaya, Samson Tella, Isabelle Tellier, Marinella Testori, Guillaume Thomas, Liisi Torga, Marsida Toska, Trond Trosterud, Anna Trukhina, Reut Tsarfaty, Utku Türk, Francis Tyers, Sumire Uematsu, Roman Untilov, Zdeňka Uřešová, Larraitz Uria, Hans Uszkoreit, Andrius Utkā, Sowmya Vajjala, Rob van der Goot, Martine Vanhove, Daniel van Niekerk, Gertjan van Noord, Viktor Varga, Eric Villemonte de la Clergerie, Veronika Vincze, Natalia Vlasova, Aya Wakasa, Joel C. Wallenberg, Lars Wallin, Abigail Walsh, Jing Xian Wang, Jonathan North Washington, Maximilian Wendt, Paul Widmer, Sri Hartati Wijono, Seyi Williams, Mats Wirén, Christian Wittern, Tsegay Woldemariam, Tak-sum Wong, Alina Wróblewska, Mary Yako, Kayo Yamashita, Naoki Yamazaki, Chunxiao Yan, Koichi Yasuoka, Marat M. Yavrumyan, Arife Betül Yenice, Olcay Taner Yıldız, Zhuoran Yu, Arlisa Yuliawati, Zdeněk Žabokrtský, Shorouq Zahra, Amir Zeldes, He Zhou, Hanzhi Zhu, Anna Zhuravleva, and Rayan Ziane. 2021. [Universal dependencies 2.9](#). LINDAT/CLARIAH-CZ digital library at the Institute of Formal and Applied Linguistics (ÚFAL), Faculty of Mathematics and Physics, Charles University.



## Appendix

### A Data Setup

In the following, we provide details about the versions, splits and pre-processing of each dataset. Additionally, we present example instances together with their token/sequence-level annotations in Table 2 (in English, where available). In our experiments, each model is tuned on the training split and only evaluated on the validation split as we are not interested in obtaining state-of-the-art results, but rather aim to analyze overall performance patterns across tasks. We use the original splits where provided and generate our own otherwise.

**Penn Treebank (Marcus et al., 1993)** We use Penn Treebank version 2 (PTB) as published in OntoNotes 4.0. Sections 02-21 were used for training, section 22 for validation, and section 23 for test, totaling 30,060, 1,336 and 1,640 instances respectively. The label space covers 48 part-of-speech tags. Note that Tamkin et al. (2020) use PTB version 3 in their experiments which we were unable to obtain due to licensing constraints. As such the exact data and splits may differ.

**Universal Dependencies (Zeman et al., 2021)** From Universal Dependencies version 2.9 (UD), we select the following treebanks: German-GSD (Brants et al., 2004), English-EWT (Silveira et al., 2014), Spanish-GSD (McDonald et al., 2013), French-GSD (Guillaume et al., 2019), Japanese-GSD (Asahara et al., 2018), Chinese-GSD (Shen et al., 2016) with standard splits, totaling 66,040 training and 6,683 validation instances. The label set comprises the 17 UPOS classes and the 36 dependency relations which can occur between a word and its head.

**WikiANN (Pan et al., 2017)** This dataset contains silver NER data for 282 languages which was extracted from Wikipedia using URL references as a proxy for named entities. It contains the entity types location (LOC), person (PER) and organization (ORG) which are annotated in BIO-format. Our experiments use the existing data splits with 20,000 training and 10,000 validation instances.

**MKQA (Longpre et al., 2021)** Multilingual Knowledge Questions and Answer (MKQA) is an open-domain question answering dataset which covers 10,000 questions and their corresponding answers in an aligned corpus spanning 26 languages.

After removing unanswerable questions, we use each correct QA pair to generate an additional incorrect pair for the same question, yielding a total set of 13,516 instances used in our experiments. To generate an incorrect answer, we sample an alternative answer of the same type (e.g., time, number) which does not equal the correct answer. Finally, we randomly split the data 80/20 into training and validation portions for which the instances are aligned across languages (i.e., the same questions and answers). The final task is a binary classification task for whether a QA pair is true or false, with a random baseline of 50%.

**Multilingual Amazon Reviews (Keung et al., 2020)** MAR are used for both sentiment analysis and topic classification. For SENTI, we convert the 1–5 star rating into  $\{1, 2\} \rightarrow \text{negative}$ ,  $\{3\} \rightarrow \text{neutral}$  and  $\{4, 5\} \rightarrow \text{positive}$ . For TOPIC, we consider the 30 product categories as topics. All original splits are kept, resulting in 200,000 training and 5,000 validation instances per language.

**20 Newsgroups (Lang, 1995)** This dataset contains English emails from 20 newsgroups and their corresponding topics. We use the `bydate`-version which is sorted by date and removes duplicate entries and email headers (which give away the topic). Of the official training and testing data, we subdivide the former 11,314 instances into an 80/20 train/validation split. Note that there may be differences to the version used in Tamkin et al. (2020) due to alternative splitting strategies.

**XNLI (Conneau et al., 2018)** The Cross-lingual Natural Language Inference (XNLI) dataset covers 15 languages translated from and including English (as it lacks Japanese data, we supplement it with JSNLI). The task is to identify the relation between a premise and a hypothesis as: `contradiction`, `entailment` or `neutral`. Our setups use the original training and validation splits with 392,702 and 2,490 input pairs respectively.

**JSNLI (Yoshikoshi et al., 2020)** This dataset contains premise-hypothesis pairs from the Stanford Natural Language Inference corpus (Bowman et al., 2015) which were translated automatically into Japanese and filtered for correctness. It contains 533,005 training and 3,916 validation instances with the same three classes as XNLI.

TOKEN-LEVEL TASKS									
PTB	In	Tokyo	,	trading	is	halted	during	lunchtime	.
	IN	NNP	,	NN	VBZ	VBN	IN	NN	.
UD	Can	rabbits	and	chickens	live	together	?		
	AUX	NOUN	CCONJ	NOUN	VERB	ADV	PUNCT		
	aux	nsubj	cc	conj	root	advmod	punct		
WikiANN	The	Zeros	formed	in	Chula	Vista	in	1976	.
	B-ORG	I-ORG	O	O	B-LOC	I-LOC	O	O	O
SEQUENCE-LEVEL TASKS									
MKQA	when did love become a part of marriage?   18th century						1 (true)		
	when did love become a part of marriage?   2016						0 (false)		
AMR	All socks had large holes after a few months.						apparel negative		
20News	[...] Does anyone know how to size cold gas roll control thruster tanks for sounding rockets? [...]						sci.space		
XNLI	I've got more than a job.   I don't have a job or any hobby.						contradiction		
JSNLI	地下鉄を待っている間に本を読む男。  男は地下にいる。 The man reads a book while waiting for the subway. The man is underground.						entailment		

Table 2: **Example Dataset Instances** annotated with respective token/sequence-level labels.

## B Experiment Setup

**Models** In the monolingual English experiments, we use `bert-base-cased` (Devlin et al., 2019; BERT) following Tamkin et al. (2020). For the multilingual experiments we use `bert-base-multilingual-cased` (Devlin et al., 2019; mBERT). For both LMs, we use respective checkpoints from the Transformer library’s model hub (Wolf et al., 2020).

Manual, fixed-band filters as well as the automatically learned filters are applied to the contextualized embeddings produced by the last layer of either model. As visualized in Figure 1, we decompose the sequence of values from each embedding dimension (768 in both LMs) using the DCT (Ahmed et al., 1974; DCT-II), weight the appropriate  $k$  by a fixed amount or by the learned weight in  $\gamma$ , before applying the IDCT to reconstruct a sequence of real values. These make up each dimension of the filtered embeddings.

Following Tamkin et al. (2020), the original/filtered embeddings are passed to a linear probe (Alain and Bengio, 2017) consisting of two parameters: a transformation  $\mathbf{W} \in \mathbb{R}^{E \times C}$  and a bias  $\mathbf{b} \in \mathbb{R}^C$ , where  $E$  is the embedding dimension and  $C$  is the number of classes specific to each task.

**Training** As we run probing experiments, neither the 108M-parameter BERT, nor the 178M-parameter mBERT are fine-tuned. We only train the linear probe which has 1,538–36,912 parameters depending on the task, plus the 512 parameters of the learned spectral filter  $\gamma$ . As in Tamkin et al. (2020), we use the Adam optimizer (Kingma and Ba, 2014) with a learning rate of  $10^{-3}$  which decays by 0.5 every time the loss plateaus. Updates are applied in batches of size 32 across a maximum of 30 epochs, with an early stopping patience of 1. Each setup is run with the five random seeds: 1932, 2771, 7308, 8119, 9095. On our hardware consisting of an NVIDIA A100 GPU with 40GBs of VRAM and an AMD Epyc 7662 CPU, training a probe takes approximately 10 minutes.

**Evaluation** In order to probe a sequence of contextualized embeddings for information at different timescales, it is necessary to apply each filter at the sub-word level. To measure the effect of different frequencies, we follow Tamkin et al. (2020) and evaluate all tasks using accuracy (ACC) on the sub-word level. Note that for token-level tasks each token label is therefore repeated across all of its sub-words, while for sequence-level tasks, each sub-word is classified with the label of its sequence.

**Implementation** All models are implemented using PyTorch v1.10 (Paszke et al., 2019) and NumPy v1.22 (Harris et al., 2020). Additionally, we use a modified version of the `torch-dct` package (Hu, 2018) to perform the DCT and IDCT. Visualizations are generated using `matplotlib` v3.5 (Hunter, 2007). Further, the code for reproducing our experiments is available at <https://github.com/mainlp/spectral-probing>.

## C Detailed Results

The following supplements the results presented in Section 3 with more detailed scores. Table 3 lists the exact scores for the monolingual English experiments on POS and TOPIC using the ORIG embeddings, the fixed-band filters and the learned AUTO filter. Table 4 lists the detailed scores for the ORIG and AUTO-filtered embeddings per language, in addition to the cross-lingual mean and standard deviation, across our seven tasks.

While the scores across random initializations never exceed a standard deviation of 1.0, it is important to note that scores may have higher variance across languages. This is to be expected due to different data across languages as well as pre-training availability. However we note that overall performance patterns (i.e., higher AUTO and relative task performance) are consistent across languages.

TASK	ORIG	LOW	MID-LOW	MID	MID-HIGH	HIGH	AUTO
POS	95.8±0.1	21.9±0.0	21.8±0.1	26.2±0.1	48.6±0.1	90.6±0.0	95.9±0.0
TOPIC	41.3±0.2	71.2±0.4	18.4±0.3	5.6±0.3	5.6±0.3	5.6±0.4	72.1±0.3

Table 3: **Detailed Monolingual Results** (ACC) for unfiltered (ORIG), low (L), mid-low (ML), mid (M), mid-high (MH), high (H), and automatically learned filters (AUTO), on the tasks of POS-tagging and TOPIC classification. Reported are the mean over five random initializations  $\pm$  standard deviations. The same results plus the spectral profiles (frequency weightings) learned by AUTO are plotted in Figure 2.

TASK	EMB	DE	EN	ES	FR	JA	ZH	AVG
POS	ORIG	92.0±0.0	91.6±0.1	93.8±0.0	95.1±0.1	92.5±0.0	89.5±0.1	92.4±1.9
	AUTO	92.1±0.1	91.6±0.0	93.9±0.0	95.1±0.0	92.7±0.1	89.8±0.1	92.5±1.8
DEP	ORIG	79.0±0.1	78.4±0.1	81.2±0.1	83.0±0.1	79.6±0.1	70.6±0.2	78.6±4.3
	AUTO	79.5±0.2	78.4±0.1	81.8±0.1	83.8±0.1	80.8±0.1	71.3±0.2	79.3±4.3
NER	ORIG	90.3±0.0	85.3±0.1	90.4±0.0	88.1±0.1	84.1±0.1	89.5±0.0	88.0±2.7
	AUTO	90.4±0.0	85.5±0.1	90.5±0.0	88.3±0.0	84.4±0.1	89.7±0.0	88.1±2.6
QA	ORIG	63.2±0.2	64.5±0.1	64.1±0.2	63.9±0.3	61.0±0.8	60.7±0.8	62.9±1.6
	AUTO	66.8±0.1	68.1±0.5	67.9±0.2	68.1±0.2	65.1±0.1	66.1±0.4	67.1±1.2
SENTI	ORIG	56.0±0.2	57.1±0.2	58.7±0.2	57.1±0.2	57.2±0.2	58.0±0.2	57.4±0.9
	AUTO	64.0±0.2	63.5±0.5	65.4±0.2	64.7±0.5	65.4±0.5	62.7±0.3	64.3±1.1
TOPIC	ORIG	22.7±0.1	26.8±0.4	22.9±0.3	24.0±0.3	22.9±0.5	43.3±0.4	27.1±8.1
	AUTO	34.3±0.7	39.8±0.4	30.2±0.2	30.7±0.4	35.8±0.5	52.3±0.5	37.2±8.2
NLI	ORIG	41.5±0.2	43.6±0.3	43.2±0.2	42.7±0.2	52.3±0.3	41.7±0.2	44.1±4.1
	AUTO	51.3±0.8	56.4±0.7	54.3±0.7	54.5±0.5	67.2±0.4	53.8±1.0	56.3±5.6

Table 4: **Detailed Multilingual Results** (ACC) for unfiltered (ORIG) and automatically learned filters (AUTO) on the tasks of POS-tagging, dependency relation classification (DEP), named entity recognition (NER), question answering (QA), sentiment analysis (SENTI), TOPIC classification, and natural language inference (NLI). Each task covers the languages German (DE), English (EN), Spanish (ES), French (FR), Japanese (JA) and Chinese (ZH). Reported are the mean over five random initializations  $\pm$  standard deviations as well as the mean over languages (AVG)  $\pm$  the standard deviation across languages. The latter results are reported in Table 1, in addition to the spectral profiles (frequency weightings) learned by AUTO in Figure 3.