

Metric-Based In-context Learning: A Case Study in Text Simplification

Subha Vadlamannati
Mercer Island High School
Seattle, USA
subhavee2@gmail.com

Gözde Gül Şahin
Computer Engineering Department
Koç University, Istanbul, Turkey
gosahin@ku.edu.tr

Abstract

In-context learning (ICL) for large language models has proven to be a powerful approach for many natural language processing tasks. However, determining the best method to select examples for ICL is nontrivial as the results can vary greatly depending on the quality, quantity, and order of examples used. In this paper, we conduct a case study on text simplification (TS) to investigate how to select the best and most robust examples for ICL. We propose **Metric-Based in-context Learning (MBL)** method that utilizes commonly used TS metrics such as SARI, compression ratio, and BERT-Precision for selection. Through an extensive set of experiments with various-sized GPT models on standard TS benchmarks such as TurkCorpus and ASSET, we show that examples selected by the top SARI scores perform the best on larger models such as GPT-175B, while the compression ratio generally performs better on smaller models such as GPT-13B and GPT-6.7B. Furthermore, we demonstrate that MBL is generally robust to example orderings and out-of-domain test sets, and outperforms strong baselines and state-of-the-art finetuned language models. Finally, we show that the behaviour of large GPT models can be *implicitly controlled* by the chosen metric. Our research provides a new framework for selecting examples in ICL, and demonstrates its effectiveness in text simplification tasks, breaking new ground for more accurate and efficient NLG systems.

1 Introduction

Text simplification (TS) is a crucial task in natural language processing, with the goal of converting complex text into simpler, easier-to-understand one. This is particularly important for individuals who struggle with comprehending complex languages, such as second language learners or individuals with cognitive impairments (Stajner, 2021) and disabilities like dyslexia (Rello et al., 2013) and autism (Barbu et al., 2015). For the aforementioned reasons, NLP community has shown great

interest in the topic, introducing plenty of datasets (e.g., ASSET (Alva-Manchego et al., 2020)), models, and evaluation metrics (e.g., SARI (Xu et al., 2016)).

There have been numerous approaches to TS proposed in the literature, including non-neural or rule-based methods (Nassar et al., 2019), machine translation approaches (Xu et al., 2016), and finetuning of large language models (Sheang and Saggion, 2021) on downstream task data. Recently, it has been shown that large language models such as GPT-3, are capable of in-context learning (ICL) (Brown et al., 2020a)—an emerging ability to learn from in-context samples without modifying model parameters.¹ Despite its strong ability, ICL still mostly falls behind the performance of finetuning techniques (Dong et al., 2023).

Recent studies have shown that in-context learning is highly variable to a range of factors, such as the number of examples, quality of examples, and even the order of examples (Lu et al., 2022; Liu et al., 2022; Dong et al., 2023). To address these concerns, recent literature has proposed several techniques for selecting the most relevant examples for ICL (Liu et al., 2022; Sorensen et al., 2022; Gonen et al., 2022; Rubin et al., 2022). The majority of them aim to *retrieve* a set of samples from the validation set that resembles the test set most by either training a separate retrieval model or utilizing an existing encoder to calculate similarities between pairs of sentences. However, adopting these techniques for text-generation tasks with multiple references is nontrivial, and the need to access to the full test set to pick examples from is not desirable, and may not always be possible in real-life scenarios.

In order to address this problem, we propose a simple yet intuitive metric-based selection tech-

¹We refer the readers to <http://ai.stanford.edu/blog/understanding-incontext/> for a summary of in-context learning inner mechanics.

nique, which we refer to as **Metric-Based** in-context Learning (MBL), to perform efficient and robust in-context learning with large language models for text generation tasks. Unlike previous ICL techniques, MBL only requires access to the development set and uses more informed measures rather than requiring generating sentence embeddings or training separate specified retrieval models. Furthermore, we perform an extensive set of experiments with GPT-3 models of various sizes (175B, 13B, and 6.7B)², specifically focusing on their performance for TS. We investigate utilizing commonly used TS metrics (e.g., SARI, compression ratio) for example selection and answer several research questions regarding their strengths and weaknesses on a variety of datasets and models. Through our experiments, we show that metric-based selection can significantly improve the performance of large language models on TS. We also demonstrate that these results are generally robust to various orderings and perform well in out-of-domain settings. This paper provides the following contributions:

- We provide a naive yet effective and robust approach to selecting examples for in-context learning, a.k.a., *metric-based learning* (MBL)³, and show that it achieves state-of-the-art results on two well-known benchmark datasets (TurkCorpus and ASSET when the optimal metric is used (see §5.1))⁴.
- We demonstrate the robustness of MBL to example ordering (see §5.2) and to out-of-domain test sets with some exceptions (see §5.3), suggesting that the order of examples and the origin of the development data are not the most important factors for MBL.
- We show that MBL improves upon important baselines (e.g., zero-shot, random selection), state-of-the-art ICL selection (e.g., KATE-GPT (Liu et al., 2022)) and text simplification methods (Sheang and Saggion, 2021) (see §5.4).

²Throughout the paper, GPT-175B, GPT-13B, and GPT-6.7B will refer to the GPT-3 model with 175B, 13B, and 6.7B parameters respectively.

³We use metric-based selection and learning interchangeably.

⁴We find SARI score to be optimal for large models, while, Compression Ratio (CR) achieves the best scores for the smaller models.

- **Our results suggest that GPT-175B can be implicitly controlled** via optimal metric-based learning, i.e., BERTScore Precision-based learning optimizes BLEU, while SARI-based selection optimizes SARI scores.

We release all generation outputs, baseline models and evaluation scripts publicly with <https://github.com/NLP-KU/metric-based-in-context-learning/>.

2 Related Work

Text Simplification (TS) Methods Recently, LLMs have been applied to text simplification through transfer learning approaches. For instance, Qiang et al. (2020) fine-tuned a BERT model on a text simplification dataset, achieving strong results on multiple benchmarks. Similarly, Sheang and Saggion (2021) introduced a transfer learning approach for text simplification using the T5 model and achieved current state-of-the-art results on standard TS benchmarks. Recent work in the TS domain has a particular focus on controllable text simplification, in which different “control tokens” are embedded in seq2seq models to control model outputs. This is seen in both Sheang and Saggion (2021) and Chamovitz and Abend (2022), where a large language model (BART, T5, etc.) is modified with several control tokens, like the number of words, Levenshtein similarity, and various text rewriting operations. A vast amount of earlier systems (e.g., (Xu et al., 2016)) have formulated text simplification as a machine translation task and employed neural machine translation architectures.

TS Evaluation Work on the suitability of various metrics for TS has also been an active area of discussion. While the most commonly used metric in TS is currently SARI (Xu et al., 2016), there is a concern over the metric that best correlates with human judgment. Alva-Manchego et al. (2021) conduct a detailed analysis of several commonly used metrics in the TS field, and suggest BERTScore_Precision as a primary metric of reference-based evaluation. Following these results, we also use BERTScore_Precision as a metric to select examples. Recent studies (Sulem et al., 2018; Tanprasert and Kauchak, 2021) analyzing the suitability of the other two common metrics, namely BLEU (Papineni et al., 2002) and FKGL (Kincaid et al., 1975), strongly advise against these metrics for TS. For these reasons, we do not select

examples based on either metric.

Example Selection and Ordering in ICL While large language models like GPT-3 perform exceptionally well on a variety of downstream tasks, selecting examples for in-context learning is non-trivial. Research on example selection is still in early stages, and a unified approach to selecting examples for downstream tasks has not yet been proposed (Dong et al., 2023). Liu et al. (2022) propose selecting the k most similar examples to the test set from the training/development set via measuring cosine distance in an embedding space (e.g., encodings from RoBERTa), and achieve strong results on various tasks like table-to-text generation. On a similar line, Rubin et al. (2022) introduce a more sophisticated method, where the authors train a two-step retrieval model to select ICL examples. Another set of work focus on optimizing prompts via mutual information (Sorensen et al., 2022) or perplexity (Gonen et al., 2022), that don’t require labeled sets. We consider Kate-GPT (Liu et al., 2022) as the closest work to ours, since both the intuition (i.e., choosing from a labeled validation set) and approach (i.e., learning-free) are similar.

3 Metric-based In-Context Learning

Following the line of work for retrieving the best samples from development set (Liu et al., 2022; Sorensen et al., 2022), we introduce a simple and intuitive technique based on employing standard evaluation metrics for selecting the examples.

Task Setup Given the list of sentences $l = [c, r_1, r_2, \dots, r_n]$, where c is the complex and r_i is the simple reference sentence; our goal is to find the best k pairs, $[c, r_i]$, such that the final text simplification performance on the test set is maximized. To do so, we go through each l in the development set and measure the distance between each c and r_i according to a metric, m . Finally, we pick the top k pairs and fill the prompt template with the samples: “Complex sentence: $\{c\}$, Simple sentence: $\{r_i\}$ ”.

We initially considered a long list of task-specific as well as general generation metrics that contain the standard evaluation metrics for TS, namely as SARI, BLEU, FKGL; as well as a simple analysis metric: Compression Ratio, and a more recent textual similarity metric BERTScore as suggested by Alva-Manchego et al. (2021). Following the criticisms by Sulem et al. (2018) and Tanprasert and Kauchak (2021), we removed BLEU and FKGL

from the list of candidate metrics.

Compression Ratio (CR) It is simply calculated by dividing the number of characters in c by the number of characters r_i . We consider the pairs with higher compression ratios as more preferable candidates for TS.

BERTScore Precision (BP) (Zhang et al., 2020) BERTScore computes the cosine similarity between each token in the candidate, y , and reference, x , sentences. Precision is calculated as:

$$\text{Prec} = \frac{1}{|y|} \sum_{y_j \in y} \max_{x_i \in x} x_i^\top y_j \quad (1)$$

We discard pairs with a score of 1 since they would simply be duplicates.

SARI (Xu et al., 2016) It is the defacto standard evaluation metric for TS. In general terms, it compares prediction against both the input and the reference sentences. It calculates a weighted average of F1 scores for three operations: addition, deletion, and keeping. Precision and recalls for each operation are calculated based on n-gram overlaps between the prediction, input and reference sentences. To calculate the SARI score for each c - r_i pair, we denote r_i as the prediction, c as the input, and $[r_1, \dots, r_{i-1}, r_{i+1}, \dots, r_n]$ as the reference sentences. Hence, this measure can only be applied when there are multiple references.

4 Experimental Setup

To investigate the effects of metric-based selection techniques on TS, we perform a comprehensive set of experiments using various LLMs, sample sizes, and datasets; and compare against strong baseline and state-of-the-art models. Following the criticism (Sulem et al., 2018) on using BLEU (Papineni et al., 2002), we use SARI (Xu et al., 2016) as our main evaluation metric. However, we also report BLEU for two reasons: i) to be consistent with previous works (see §4.4) and ii) to gain more insights on how the chosen metric for MBL affects the results measured with different metrics.

4.1 Models

Due to its recent success in text generation and in-context learning for various downstream tasks, we experiment with the GPT-3 (Brown et al., 2020b) model. We use three different version with the following parameter sizes:

175B, a.k.a., da-vinci-003, 13B, a.k.a., curie, and 6.7B, a.k.a., babbage. We used OpenAI API⁵ to generate responses using temperature=0.7, max_tokens=256 top_p=1, frequency_penalty=0 and presence_penalty = 0.

4.2 Datasets

We perform our main experiments on the ASSET (Alva-Manchego et al., 2020) and TurkCorpus (Xu et al., 2016) datasets. To investigate the transferability of our models, we conduct additional experiments on an out-of-domain cognitive simplification dataset, FestAbility (Chamovitz and Abend, 2022).

TurkCorpus is a widely-used dataset with 2000 validation and 359 test sentences. It has 8 reference sentences for each original sentence in both the validation and test set.

ASSET is another widely used TS dataset with the intention of improving upon TurkCorpus. It has the same 2000 validation and 359 original test sentences but introduces 10 new reference sentences for each original sentence. ASSET is deemed to be simpler by human evaluation in both fluency and simplicity (Alva-Manchego et al., 2020). ASSET improves upon TurkCorpus as it allowed human reviewers to focus on a wider variety of TS operations, which are: lexical paraphrasing, compression, and sentence splitting. Because of this, we emphasize the experiments done on ASSET rather than TurkCorpus while interpreting the results and answering the research questions in §4.

FestAbility is a cognitive simplification dataset with 321 pairs of complex and simple sentences—i.e., only one reference sentence. Each of these is additionally annotated with rewriting operations such as <ADDITION> and <DELETION>. These sentences are generated from the transcript of the virtual accessibility conference, and simplifications are generated from the Yalon Method (Chamovitz and Abend, 2022), a specialized method for simplifying text for individuals with cognitive impairments.

4.3 Baselines

For comparison, we implement three baselines: i) random selection ii) KATE-GPT (Liu et al., 2022) and iii) zero-shot. In the random setting, we randomly select c and r_i pairs from the validation

⁵<https://openai.com/>

sets. For KATE-GPT (Liu et al., 2022), we use the default setting that employs RoBERTa-base for contextualized embeddings and cosine similarity for the distance metric. Given that KATE-GPT calculates sentence pair similarities between the development and test set, unlike just the development set (like ours), we choose complex sentences as the representative. Zero-shot setting is simply conducted with the same instruction prompt without providing any examples.

4.4 Text Simplification State-of-the-art

We compare our results across multiple state-of-the-art systems.

MUSS (BART+ACCESS Supervised) Martin et al. (2022) fine-tune BART (Lewis et al., 2020) and add information from the four simplification tokens trained in ACCESS.

Finetuned-T5 Sheang and Saggion (2021) fine-tune T5 by adding multiple control tokens (e.g., compression ratio, Levenshtein similarity ratio, word rank, and number of words) similar to ACCESS, which control the model’s outputs. To the best of our knowledge, they achieve the current state-of-the-art on both the TurkCorpus and ASSET datasets, with SARI scores of 43.31 and 45.04 respectively.

4.5 Evaluation

Even though SARI is considered the standard evaluation metric in our experiments below, we evaluate the results both with SARI and BLEU to emphasize the behavior differences in metric-based selection. It should be noted that, SARI compares prediction against input and reference(s), while BLEU compares only the prediction against reference(s). We use the package EASSE (Alva-Manchego et al., 2019) with the default settings⁶ to generate reports for all of our experiments.

5 Experiments and Results

We conduct a comprehensive set of experiments with the setup explained in §4. Following the work by Lu et al. (2022), we experiment with the k values as 1, 2, 4, 6, 8, 10, 15, 20 examples. We repeat the random baseline experiments three times for each k . We aim to answer the following research questions (RQ):

⁶We used the BLEU with $n = 5$ against all references provided. The implementation is available at <https://github.com/feralvam/easse>.

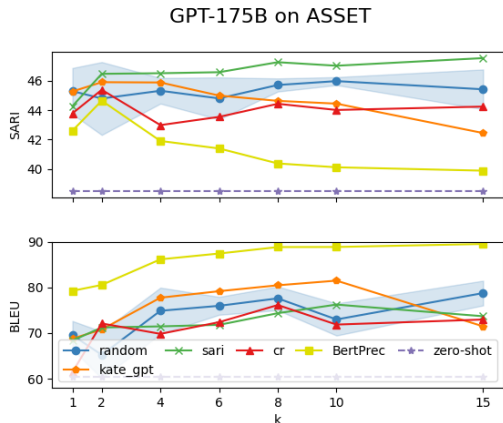


Figure 1: GPT-175B results on ASSET. Top: SARI scores, Bottom: BLEU scores.

RQ1: How do different metric-based selection techniques compare? (§5.1)

RQ2: Is metric-based sample selection robust to the order of the prompts? (§5.2)

RQ3: How does metric-based ICL compare to state-of-the-art text simplification methods? (§5.3)

RQ4: Does metric-based selection performance on one dataset transfer to other out-of-domain datasets? (§5.4)

5.1 RQ1: Effect of Metrics

Our main results with our default settings (GPT-175B on ASSET) is shown in Fig. 1. First of all, we observe that the random baseline is quite strong on average, however, with a **large variation** for most k values; while zero-shot results are quite weak for all datasets. Interestingly, SARI-based selection consistently leads to the highest SARI scores for $k > 1$, while BERTPrec-based selection gives the highest BLEU and lowest SARI scores consistently for each k . Kate-GPT follows BERTPrec-based selection for the BLEU score, while providing results on par or lower than the random baseline for the SARI score.

Next, we check whether our findings hold for smaller models. In Fig. 2, we show the results of our smallest model, GPT-6.7B on the ASSET dataset. Since the zero-shot results were significantly lower than $k = 1$, we show them in Table 1, rather than plotting. Not surprisingly the highest SARI scores are achieved via the largest model; however, the opposite is not true for BLEU. The smallest model achieves the highest BLEU scores

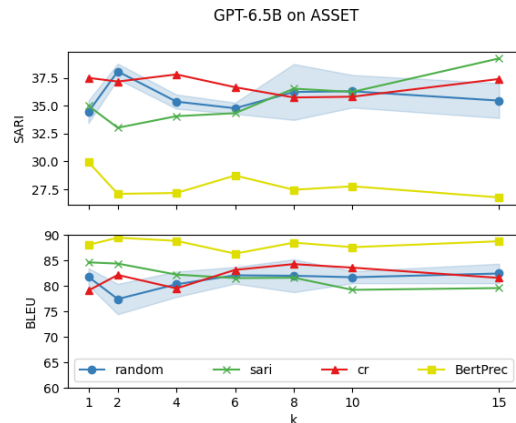


Figure 2: GPT-6.7B results on ASSET. Top: SARI scores, Bottom: BLEU scores.

that raises another warning flag for using BLEU for TS evaluation.

Similar to the larger model, BERTPrec-based selection achieves the highest BLEU, and the lowest SARI scores. SARI-based selection provides considerably high SARI scores only for larger k s, suggesting the implicit controlling mechanism does not exist, or is only triggered with more samples. We also observe that CR performs relatively better on GPT-6.7B which suggests compression provides a stronger signal (e.g., deletion, shorter tokens) that can be utilized better by smaller models for simplification.

Finally, we investigate how the quality of the dataset affects the metric-based selection techniques, i.e., whether they are robust to noise. Fig 3 shows an overview of the SARI scores from all models on the noisy (i.e., TurkCorpus) and the cleaner (i.e., ASSET) dataset. Even though the general patterns are visible, the results on TurkCorpus are moderately less conclusive.

Dataset	Model	SARI	BLEU
TurkCorpus	GPT-175B	32.17	42.34
	GPT-17B	27.19	38.35
	GPT-6.7B	24.13	57.14
ASSET	GPT-175B	38.49	60.48
	GPT-17B	30.45	40.13
	GPT-6.7B	26.28	69.83

Table 1: Zero-shot results

Selection Metric versus Evaluation Metric

Even though this was not one of our main research questions, we observe a strong relation between the metric used for MBL and the metric used for evaluation. For all the model and

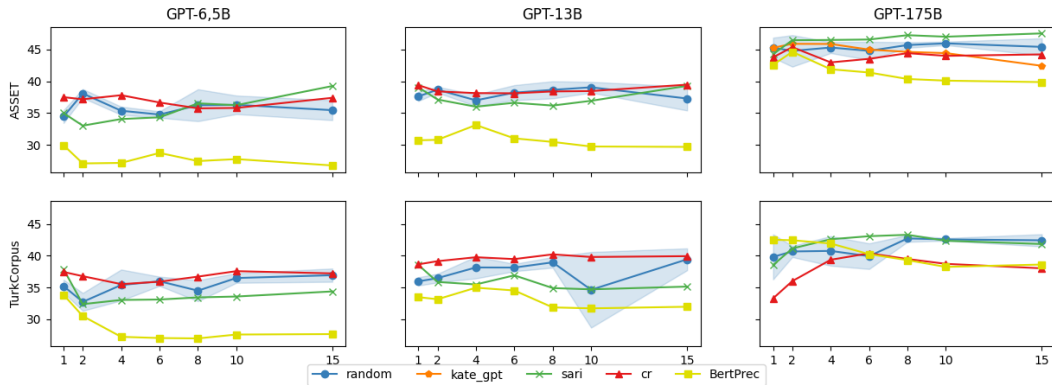


Figure 3: SARI scores for GPT-6.7B, GPT-13B and GPT-175B models on ASSET (top) and TurkCorpus (bottom) datasets. See App. B for BLEU scores.

dataset size settings, we observe that BLEU scores are consistently higher when the examples are selected via BERTScore_Precision. When we evaluate with the SARI score, SARI-metric behaves similarly for the GPT-175B model, however CR-metric performs better for the smaller models. More evidence for the relation between BLEU and BERTScore_Precision can be found in Appendix B. This suggests that the behaviour of large-enough GPT models can be *implicitly controlled* via MBL, which paves the way to a new research direction and needs further investigation.

5.2 RQ2: Effect of Order

Previous research (Lu et al., 2022) has shown that the order of the examples may have a significant impact on ICL performance. Commonly used orderings (Lu et al., 2022) include sorting from highest to lowest quality example, vice versa, and random selection. Inspired by these findings, we investigate the robustness of our selection metrics across sample orders. To do so, for each metric we perform three different order arrangements, namely as highest \rightarrow lowest, lowest \rightarrow highest, and random ordering for each metric. To have enough variation, we only experiment with $k = 6, 8, 10, 15$. As the baseline, we randomly pick samples and arrange them in 3 different randomized orders.

In Fig 4, we show how the performance of GPT-175B varies on ASSET when the samples that are i) picked randomly, ii) by SARI-based selection and iii) by BERTPrec-based selection are reordered following the above setup. As can be seen, the best-performing metrics, are also the most robust compared to others. To elaborate, SARI-based selection that provided the highest SARI scores has

the least variation, i.e., most robust to order; while BERTPrec-based selection provides the most stable BLEU scores along with the highest.

5.3 RQ3: Comparison to State-of-the-art

Finally, we compare our best and average model settings to state-of-the-art fine-tuned models⁷. The results are given in Table 2. Here, Random and SARI averages are calculated from §5.1 results, averaged over all k , with random selection being additionally averaged over all three random selections. These averages are reported for GPT-175B results, because it is generally the best model when considering averages across both datasets. As can be seen, the GPT-175B model with SARI-based selection outperforms existing results on all datasets, followed by random best and SARI-averaged. The exact settings (number of examples, model, and ordering) for SARI and Random Best can be found Appendix A.

5.4 RQ4: Task Transfer

In order to evaluate the suitability of our approach for unseen tasks and datasets, we experiment with choosing samples from a tune set and testing the performance on an unseen set. Here, we use ASSET and TurkCorpus as the tune set and evaluate on all three datasets: ASSET, TurkCorpus, and FestAbility. To investigate different metrics and language models, we perform experiments with GPT-175B with SARI-based selection and GPT-13B with CR-based selection as both metric selection techniques are generally best on those respective models. We

⁷The models which do not provide SOTA (e.g., KATE) are not included in the Table. The statistical significance cannot be provided since there is only one setting for the few-shot setting.

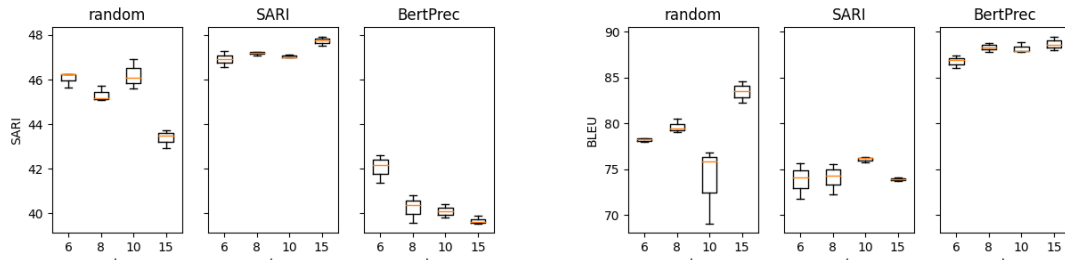


Figure 4: Boxplots for GPT-175B model performance on ASSET with sample (re)ordering via random, SARI-based and BERTPrec-based selections. Performance shown in SARI (left), and BLEU (right)

Model	ASSET	TurkCorpus	FestAbility
Finetuned T5	45.04	43.31	N/A
MUSS (BART + ACCESS)	43.63	42.62	N/A
BART-Large+Classifier	38.76	N/A	27.13
(Ours) Random-Best	46.93	43.14	N/A
(Ours) Random-Average	45.33	40.32	N/A
(Ours) MBL-Best	47.94	43.46	44.86
(Ours) MBL-Average	46.63	41.78	43.55

Table 2: Comparison to TS state-of-the-art models. Random- and MBL-best examples are selected from the top examples in all experiments run. The best results are shown in bold. For more information on the exact settings for MBL and Random Best, see Appendix A.

use the best experimental settings from Table 2 in out-of-domain settings, comparing them with their in-domain counterparts. For example, the best setting for TurkCorpus is $k=6$ with high to low ordering (see Appendix A for more details on optimal experiment settings), so we compare the results of the model when given this setting on both the TurkCorpus and ASSET datasets. State-of-the-art results in this table refer to the best setting for in-domain experiments (i.e. ASSET evaluated on ASSET or TurkCorpus evaluated on TurkCorpus).

Our results are given in Table 3. For easy comparison, the Table also includes in-domain selection results as well as the current state-of-the-art scores taken from Table 2. In the first row, we observe that samples selected from TurkCorpus and tested on ASSET achieve significantly lower SARI scores than their in-domain variant for the GPT-175B setting, whereas the gap is lower for the GPT-13B. On the other hand, for the TurkCorpus test setting (second row), we see that GPT-175B model prompted with the best ASSET examples achieves even better results than the in-domain setting, suggesting a highly successful transfer. This ability cannot be observed for the GPT-13B model with CR-based selection. The final row shows the transfer results to another related but different task. It is apparent

that both models prompted with ASSET examples achieve marginally higher scores than the TurkCorpus ones.

Taking a look at the BLEU scores, we see that out-of-domain configurations on the TurkCorpus and ASSET datasets generally tend to match or even exceed their in-domain counterparts, suggesting a successful transfer. However, on the FestAbility dataset, we observe notably low BLEU scores, which are in-part due to the nature of FestAbility, in which sentences are often simplified in unconventional ways. Additionally, FestAbility sentences are extremely short, with only 1452 unique tokens in the original sentences and 996 unique tokens in the simplified sentences (Chamovitz and Abend, 2022), leading to unconventional results.

Test Set	Model Setting	Tune Set	SARI	BLEU
ASSET	GPT-175B, SARI, high to low, $k=6$	TurkCorpus	43.46	79.83
	GPT-175B, SARI, high to low, $k=6$	ASSET	46.93	75.67
	GPT-13B, CR, high to low, $k=15$	TurkCorpus	41.73	74.57
	GPT-13B, CR, high to low, $k=15$	ASSET	41.9	76.49
	State-of-the-art (MBL-Best)		47.94	73.92
	Zero-shot (GPT-175B)		38.49	60.48
TurkCorpus	GPT-175B, SARI, random, $k=15$	ASSET	42.37	64.52
	GPT-175B, SARI, random, $k=15$	TurkCorpus	41.48	85.89
	GPT-13B, CR, high to low, $k=15$	ASSET	39.44	71.15
	GPT-13B, CR, high to low, $k=15$	TurkCorpus	40.37	73.83
	State-of-the-art (MBL-Best)		43.46	79.83
	Zero-Shot (GPT-175B)		32.17	42.34
FestAbility	GPT-175B, SARI, random, $k=6$	TurkCorpus	42.24	20.76
	GPT-175B, SARI, random, $k=15$	ASSET	44.86	17.08
	GPT-13B, CR, high to low, $k=15$	TurkCorpus	25.46	23.37
	GPT-13B, CR, high to low, $k=15$	ASSET	36.63	12.01
	State-of-the-art (MBL-Best)		44.86	N/A
	Zero-shot (GPT-175B)		40.77	6.9

Table 3: ICL out-of-domain results for GPT-175B, SARI-based selection and GPT-13B, CR-based selection. Examples are picked from the *Tune Set* and tested on the *Test Set*. Zero-shot results are from GPT-175B and given in the final rows for each dataset.

6 Qualitative Analysis

In this section, we perform a qualitative analysis of different model generated simplifications and

Metric	Top 2 Examples
Compression Ratio	Complex Sentence They <u>manifest</u> with either <u>neurological complications</u> or with skin problems (or <u>occasionally</u> both). Simple Sentence They <u>show</u> either <u>brain</u> or skin <u>problems</u> (or both).
	Complex Sentence The <u>psychological state of sympathy</u> is closely linked with <u>that of</u> compassion, empathy and <u>empathic concern</u> . Simple Sentence <u>Sympathy</u> is closely linked with compassion and empathy.
BertScore Precision	Complex Sentence Sthenurine forelimbs were long with two extra-long fingers and claws compared with the <u>relatively</u> small, stiff arms of modern macropods. Simple Sentence Sthenurine forelimbs were long with two extra-long fingers and claws compared with the small, stiff arms of modern macropods.
	Complex Sentence In 1828, Coenraad Johannes van Houten <u>developed</u> the first cocoa powder producing machine in the Netherlands. Simple Sentence In 1828, Coenraad Johannes van Houten <u>created</u> the first cocoa powder producing machine in the Netherlands.
SARI	Complex Sentence The organic matter in soil <u>derives</u> from plants and animals. Simple Sentence The organic matter in soil <u>comes</u> from plants and animals.
	Complex Sentence Dennis Lee Hopper (born May 17, 1936) is an American actor, filmmaker and artist. Simple Sentence Dennis Lee Hopper was born on May 17, 1936. He is an American actor, filmmaker and artist.

Table 4: Top 2 examples from each applicable selection metric (random and KATE-GPT selection were not applicable). All samples taken from the ASSET Validation dataset. We color rephrases first in blue and then in yellow, mark significant deletions in red, and underline sentence splits.

metric-based prompting examples in order to better understand how different settings affect model outputs.

6.1 Explaining Performance as k Increases

We aim to understand why certain metrics (BERT-Prec and KATE-GPT) tend to perform worse as k increases, while other metrics (SARI) tend to perform better as k increases when evaluated on SARI scores (as seen in Fig. 3). In fact, this result is commonly seen in other papers (Zhao et al., 2021; Zhang et al., 2022), where they describe that adding more training examples can sometimes hurt accuracy. By analyzing output of metric-based selection on a fixed dataset and model (ASSET, GPT-175B) seen in Appendix D.3, we aim to understand the performance of different metrics as the number of examples, or k , increases. Our analysis focuses on three different metrics (KATE-GPT, BERTPrec, and SARI) and a particularly difficult example due to its unconventional subject nature, multiple abbreviations, and unknown words, and objectively confusing sentence structure. In general, we see from earlier trends that KATE-GPT and BERTPrec-selected examples tend to get worse (w.r.t SARI) as k increases (see Figure 1-top). We also observe this qualitatively, as k increases, KATE-GPT and

BERTPrec examples become closer to the original sentence, with BERTPrec generations even matching the original sentence at $k = 15$. However, as the value of k increases, SARI-selected examples show an improvement in quality. We observe that examples selected using the SARI score metric tend to: i) split sentences more frequently, and ii) decode potentially confusing abbreviations, such as “OEL”.

Sentence Splitting: SARI-selected examples are more prone to splitting sentences (see $k=2,15$), which may be in-part due to the style of the top SARI examples, which include sentence splitting; while this is not present in any of the other metrics. See Appendix D.3 for examples. Sentence splitting is correlated with increased human comprehension of TS outputs (Williams et al., 2003). This is particularly interesting because it leads us to infer that models can potentially learn the “style” of the reference sentences.

Abbreviations: In all three cases, ($k = 2, 8, 15$) examples selected by SARI score remove the potentially confusing abbreviation “OEL” and instead replace it with either “original English-language” or “English-language”, while KATE-GPT and BERT-Prec selected examples only exhibit this behavior for $k = 2$ (see Appendix D.3).

6.2 Analyzing Model Size

Model size plays a significant role in output sentences, with smaller models (especially GPT-6.7B) tending to change very little structurally from the original sentence, regardless of the metric used to select examples. See Appendix D for a complete list of model outputs on all metrics for the original sentence “OEL manga series Graystripe’s Trilogy There is a three volume original English-language manga series following Graystripe, between the time that he was taken by Twolegs in Dawn until he returned to ThunderClan in The Sight”. From these results, we conclude that GPT-6.7B tends to hardly change sentences at all, with both Random and BERTPrec-selected examples having no change from the original sentence. SARI-selected examples adds a comma, but CR-selection prompts the model to rephrase key parts of the sentence. GPT-13B performs considerably better when looking at a qualitative analysis, as all examples have removed “OEL manga series Graystripe’s Trilogy” and restructured the sentence to be more concise, and SARI-selected going as far to remove an ambiguous abbreviation “OEL”. These qualitative observations are consistent with our results from Figure 1.

6.3 Analyzing Top Metric-Selected Examples

In this section, we analyze the top metric-selected examples for compression ratio, BERTPrec, and SARI. In Table 4 we include the top 2 examples for each metric from the ASSET validation dataset, and in Appendix C we include the remaining top 8 examples for SARI and BERTPrec selection.

Looking at the style of both BERTPrec and SARI score, both metrics’ top examples barely change from the original sentences, often only changing one or two words (i.e., movie → film) but leaving the rest unchanged, primarily using deletion or rewriting operations. However, in CR top examples, we see extreme deletions from the original sentences and several rewriting operations done (which is consistent with our understanding of the compression ratio). Notably, we also see that top SARI examples are the only metric that use sentence splitting (see the 2nd example under SARI from Table 4).

7 Conclusion and Future Work

In conclusion, we propose a novel and robust method for selecting examples in the TS domain,

evaluating its effectiveness on multiple well-known TS datasets and even on downstream tasks like cognitive simplification. Our experiments demonstrate state-of-the-art results in the field of TS and CS, reaching scores of 44.86 on FestAbility, 47.94 on ASSET and 43.46 on TurkCorpus. We hope that future work will generalize our findings in other text generation tasks and other domains.

Limitations

Our approach is computationally and financially intensive, especially on the GPT-175B model, which limits its scalability to smaller, open-source models. While our approach has shown strong results in the TS domain, we are not yet sure whether using domain-specific selection methods is widely applicable. Our approach also is not applicable in true few-shot settings in which a large validation set is not available to select examples from. Also, our approaches’ scalability to other downstream TS tasks outside of cognitive simplification is yet to be tested, especially in different domains. We tested on two well-known TS datasets (ASSET and TurkCorpus), and we did not test on another known TS dataset, Newsela, due to its restrictive licensing. Additionally, we have tested our approach on example numbers up to 15 due to financial constraints, and testing on higher numbers of examples may show additional insights and we leave this for future researchers.

Ethics Statement

We acknowledge that while our approach reaches high scores on datasets aimed for individuals with disabilities, further research and evaluation from humans with specific disabilities listed in this paper is crucial to determine the true effectiveness of our approach in these scenarios.

Acknowledgements

This work has been supported by the Scientific and Technological Research Council of Türkiye (TÜBİTAK) as part of the project “Automatic Learning of Procedural Language from Natural Language Instructions for Intelligent Assistance” with the number 121C132. We also gratefully acknowledge the Fatima Fellowship and KUIS AI Lab for providing support. We thank our anonymous reviewers, Aykut Erdem and the members of GGLab who helped us improve this paper.

References

- Fernando Alva-Manchego, Louis Martin, Antoine Bordes, Carolina Scarton, Benoît Sagot, and Lucia Specia. 2020. [ASSET: A dataset for tuning and evaluation of sentence simplification models with multiple rewriting transformations](#). In *Proceedings of the 58th Annual Meeting of the Association for Computational Linguistics*, pages 4668–4679, Online. Association for Computational Linguistics.
- Fernando Alva-Manchego, Louis Martin, Carolina Scarton, and Lucia Specia. 2019. [EASSE: Easier automatic sentence simplification evaluation](#). In *Proceedings of the 2019 Conference on Empirical Methods in Natural Language Processing and the 9th International Joint Conference on Natural Language Processing (EMNLP-IJCNLP): System Demonstrations*, pages 49–54, Hong Kong, China. Association for Computational Linguistics.
- Fernando Alva-Manchego, Carolina Scarton, and Lucia Specia. 2021. [The \(un\)suitability of automatic evaluation metrics for text simplification](#). *Computational Linguistics*, 47(4):861–889.
- Eduard Barbu, Maria Martín-Valdivia, Eugenio Martínez-Cámara, and L. López. 2015. [Language technologies applied to document simplification for helping autistic people](#). *Expert Systems with Applications*, 42:5076–5086.
- Tom Brown, Benjamin Mann, Nick Ryder, Melanie Subbiah, Jared D Kaplan, Prafulla Dhariwal, Arvind Neelakantan, Pranav Shyam, Girish Sastry, Amanda Askell, et al. 2020a. Language models are few-shot learners. *Advances in neural information processing systems*, 33:1877–1901.
- Tom B. Brown, Benjamin Mann, Nick Ryder, Melanie Subbiah, Jared Kaplan, Prafulla Dhariwal, Arvind Neelakantan, Pranav Shyam, Girish Sastry, Amanda Askell, Sandhini Agarwal, Ariel Herbert-Voss, Gretchen Krueger, Tom Henighan, Rewon Child, Aditya Ramesh, Daniel M. Ziegler, Jeffrey Wu, Clemens Winter, Christopher Hesse, Mark Chen, Eric Sigler, Mateusz Litwin, Scott Gray, Benjamin Chess, Jack Clark, Christopher Berner, Sam McCandlish, Alec Radford, Ilya Sutskever, and Dario Amodei. 2020b. [Language models are few-shot learners](#).
- Eytan Chamovitz and Omri Abend. 2022. Cognitive simplification operations improve text simplification. In *Proceedings of the 26th Conference on Computational Natural Language Learning (CoNLL)*, pages 241–265.
- Qingxiu Dong, Lei Li, Damai Dai, Ce Zheng, Zhiyong Wu, Baobao Chang, Xu Sun, Jingjing Xu, Lei Li, and Zhifang Sui. 2023. [A survey for in-context learning](#).
- Hila Gonen, Srini Iyer, Terra Blevins, Noah A. Smith, and Luke Zettlemoyer. 2022. [Demystifying prompts in language models via perplexity estimation](#). *CoRR*, abs/2212.04037.
- J Peter Kincaid, Robert P Fishburne Jr, Richard L Rogers, and Brad S Chissom. 1975. Derivation of new readability formulas (automated readability index, fog count and flesch reading ease formula) for navy enlisted personnel. Technical report, Naval Technical Training Command Millington TN Research Branch.
- Mike Lewis, Yinhan Liu, Naman Goyal, Marjan Ghazvininejad, Abdelrahman Mohamed, Omer Levy, Veselin Stoyanov, and Luke Zettlemoyer. 2020. [BART: denoising sequence-to-sequence pre-training for natural language generation, translation, and comprehension](#). In *Proceedings of the 58th Annual Meeting of the Association for Computational Linguistics, ACL 2020, Online, July 5-10, 2020*, pages 7871–7880. Association for Computational Linguistics.
- Jiachang Liu, Dinghan Shen, Yizhe Zhang, Bill Dolan, Lawrence Carin, and Weizhu Chen. 2022. [What makes good in-context examples for gpt-3?](#) In *Proceedings of Deep Learning Inside Out: The 3rd Workshop on Knowledge Extraction and Integration for Deep Learning Architectures, DeeLIO@ACL 2022, Dublin, Ireland and Online, May 27, 2022*, pages 100–114. Association for Computational Linguistics.
- Yao Lu, Max Bartolo, Alastair Moore, Sebastian Riedel, and Pontus Stenetorp. 2022. [Fantastically ordered prompts and where to find them: Overcoming few-shot prompt order sensitivity](#). In *Proceedings of the 60th Annual Meeting of the Association for Computational Linguistics (Volume 1: Long Papers)*, pages 8086–8098, Dublin, Ireland. Association for Computational Linguistics.
- Louis Martin, Angela Fan, Éric de la Clergerie, Antoine Bordes, and Benoît Sagot. 2022. [MUSS: Multilingual unsupervised sentence simplification by mining paraphrases](#). In *Proceedings of the Thirteenth Language Resources and Evaluation Conference*, pages 1651–1664, Marseille, France. European Language Resources Association.
- Islam Nassar, Michelle Ananda-Rajah, and Gholamreza Haffari. 2019. [Neural versus non-neural text simplification: A case study](#). In *Proceedings of the The 17th Annual Workshop of the Australasian Language Technology Association, ALTA 2019, Sydney, Australia, December 4-6, 2019*, pages 172–177. Australasian Language Technology Association.
- Kishore Papineni, Salim Roukos, Todd Ward, and Wei-Jing Zhu. 2002. [Bleu: a method for automatic evaluation of machine translation](#). In *Proceedings of the 40th Annual Meeting of the Association for Computational Linguistics*, pages 311–318, Philadelphia, Pennsylvania, USA. Association for Computational Linguistics.
- Jipeng Qiang, Yun Li, Zhu Yi, Yunhao Yuan, and Xindong Wu. 2020. Lexical simplification with pre-trained encoders. *Thirty-Fourth AAAI Conference on Artificial Intelligence*, page 8649–8656.

- Luz Rello, Ricardo Baeza-Yates, Stefan Bott, and Horacio Saggion. 2013. [Simplify or help? text simplification strategies for people with dyslexia](#). In *Proceedings of the 10th International Cross-Disciplinary Conference on Web Accessibility, W4A '13*, New York, NY, USA. Association for Computing Machinery.
- Ohad Rubin, Jonathan Herzig, and Jonathan Berant. 2022. [Learning to retrieve prompts for in-context learning](#). In *Proceedings of the 2022 Conference of the North American Chapter of the Association for Computational Linguistics: Human Language Technologies*, pages 2655–2671, Seattle, United States. Association for Computational Linguistics.
- Kim Cheng Sheang and Horacio Saggion. 2021. [Controllable sentence simplification with a unified text-to-text transfer transformer](#). In *Proceedings of the 14th International Conference on Natural Language Generation*, pages 341–352, Aberdeen, Scotland, UK. Association for Computational Linguistics.
- Taylor Sorensen, Joshua Robinson, Christopher Michael Rytting, Alexander Glenn Shaw, Kyle Jeffrey Rogers, Alexia Pauline Delorey, Mahmoud Khalil, Nancy Fulda, and David Wingate. 2022. [An information-theoretic approach to prompt engineering without ground truth labels](#). In *Proceedings of the 60th Annual Meeting of the Association for Computational Linguistics (Volume 1: Long Papers), ACL 2022, Dublin, Ireland, May 22-27, 2022*, pages 819–862. Association for Computational Linguistics.
- Sanja Stajner. 2021. [Automatic text simplification for social good: Progress and challenges](#). In *Findings of the Association for Computational Linguistics: ACL-IJCNLP 2021*, pages 2637–2652, Online. Association for Computational Linguistics.
- Elior Sulem, Omri Abend, and Ari Rappoport. 2018. [BLEU is not suitable for the evaluation of text simplification](#). In *Proceedings of the 2018 Conference on Empirical Methods in Natural Language Processing*, pages 738–744, Brussels, Belgium. Association for Computational Linguistics.
- Teerapaun Tanprasert and David Kauchak. 2021. [Flesch-kincaid is not a text simplification evaluation metric](#). In *Proceedings of the 1st Workshop on Natural Language Generation, Evaluation, and Metrics (GEM 2021)*, pages 1–14, Online. Association for Computational Linguistics.
- Sandra Williams, Ehud Reiter, and Liesl Osman. 2003. [Experiments with discourse-level choices and readability](#). In *Proceedings of the 9th European Workshop on Natural Language Generation (ENLG-2003) at EACL 2003*, Budapest, Hungary. Association for Computational Linguistics.
- Wei Xu, Courtney Napoles, Ellie Pavlick, Quanze Chen, and Chris Callison-Burch. 2016. [Optimizing statistical machine translation for text simplification](#). *Transactions of the Association for Computational Linguistics*, 4:401–415.
- Tianyi Zhang, Varsha Kishore, Felix Wu, Kilian Q. Weinberger, and Yoav Artzi. 2020. [Bertscore: Evaluating text generation with BERT](#). In *8th International Conference on Learning Representations, ICLR 2020, Addis Ababa, Ethiopia, April 26-30, 2020*. OpenReview.net.
- Yiming Zhang, Shi Feng, and Chenhao Tan. 2022. [Active example selection for in-context learning](#). In *Proceedings of the 2022 Conference on Empirical Methods in Natural Language Processing, EMNLP 2022, Abu Dhabi, United Arab Emirates, December 7-11, 2022*, pages 9134–9148. Association for Computational Linguistics.
- Zihao Zhao, Eric Wallace, Shi Feng, Dan Klein, and Sameer Singh. 2021. [Calibrate before use: Improving few-shot performance of language models](#). In *Proceedings of the 38th International Conference on Machine Learning, ICML 2021, 18-24 July 2021, Virtual Event*, volume 139 of *Proceedings of Machine Learning Research*, pages 12697–12706. PMLR.

A Optimal Settings

In this section, we provide full optimal settings in Table 5 for the “Random Best” and “MBL Best” models. These settings are all in-domain (i.e., ASSET Validation, ASSET Tune; MTurk Validation, MTurk Tune) and include model size, k (number of examples), and ordering (high/low, low/high, and random).

Metric and Dataset	Model	Metric	k	Ordering
MBL Best TurkCorpus	GPT-175B	SARI	6	High/Low
Random Best TurkCorpus	GPT-175B	SARI	8	Low/High
MBL Best ASSET	GPT-175B	SARI	15	Random
Random Best ASSET	GPT-175B	SARI	10	Random

Table 5: MBL-Best and Random-Best settings for results

B BLEU Results

In this section, we include full BLEU results in Figure 5 including all model sizes (175B, 13B, 6.7B), datasets (TurkCorpus and ASSET) and selection techniques.

C Top ASSET Examples

In this section, we include extended results from 4, with the top 3-10 results from the ASSET Validation dataset based on top SARI (Section C.1), CR, and BERTPrec (Section C.2) scores.

C.1 SARI

In this section, we include the top 3 to 10 examples based on SARI score selected from the ASSET Validation dataset in Table 6.

C.2 BERTPrec

In this section, we include the top 3 to 10 examples based on SARI score selected from the ASSET Validation dataset in Table 7.

D Selected Model Generated Outputs

In this section, we analyze select model generated outputs on 4 (5 for GPT-175B) different example-selection methods (Random, SARI, CR, BERTPrec and optionally KATE-GPT) on different models for in-domain configurations of the ASSET dataset. The original sentence in all of these is "OEL manga series Graystripe’s Trilogy There is a three volume original English-language manga series following Graystripe, between the time that he was taken

by Twolegs in Dawn until he returned to ThunderClan in The Sight." This sentence was specifically picked from the ASSET/TurkCorpus test dataset based on three reasons: 1) complexity (potentially confusing abbreviations and unconventional sentence structure) 2) length 3) unfamiliar/domain-specific terms from "Warrior Cats" (e.g. "ThunderClan" and "Twolegs"). §D.1 includes generations on GPT-13B, §D.2 includes generatons on GPT-6.7B, and §D.3 includes generations on GPT-175B.

D.1 Selected GPT-13B Generations

In this section, we include generations from the original sentence mentioned in D on GPT-13B on the ASSET Test set.

D.2 Selected GPT-6.7B Generations

In this section, we include generations from the original sentence mentioned in D on GPT-6.7B on the ASSET Test set.

D.3 Selected GPT-175B Generations

In this section, we include generations from the original sentence mentioned in D on GPT-175B on the ASSET Test set. Text in red indicates text that has been successfully been changed from the abbreviation "OEL" to an interpretable phrase (either "English-language" or "original English-language").

k	Example
3	Complex Sentence It is adjacent to Lord Wandsworth College. Simple Sentence it is next to Lord Wandsworth College.
4	Complex Sentence He took the post of chief conductor of the Netherlands Radio Philharmonic in 1957. Simple Sentence He became the chief conductor of the Netherlands Radio Philharmonic in 1957.
5	Complex Sentence It was discovered on February 27, 1995. Simple Sentence It was found on February 27, 1995.
6	Complex Sentence Surnames Aaron Schock, member of the U. S. House of Representatives representing the 18th district of Illinois. Simple Sentence Surnames Aaron Schock is a member of the U. S. House of Representatives. He represents the 18th district of Illinois.
7	Complex Sentence Mork holds a Professorship at the Norwegian Academy of Music, Oslo. Simple Sentence Mork is a Professor at the Norwegian Academy of Music.
8	Complex Sentence The Hubble Space Telescope observed Fortuna in 1993. Simple Sentence The Hubble Space Telescope saw Fortuna in 1993.
9	Complex Sentence The lithosphere is underlain by the asthenosphere, the weaker, hotter, and deeper part of the upper mantle. Simple Sentence The lithosphere is supported by the asthenosphere, the weaker, hotter, and deeper part of the upper mantle.
10	Complex Sentence The Beatles famously included his face on the cover of Sgt. Pepper's Lonely Hearts Club Band (Guy and Llewelyn-Jones 2004, 111). Simple Sentence The Beatles put his face on the cover of Sgt. Pepper's Lonely Hearts Club Band.

Table 6: Top 3-10 Examples from SARI, ASSET Validation dataset.

k	Example
3	<p>Complex Sentence The Convent has been the official residence of the Governor of Gibraltar since 1728.</p> <p>Simple Sentence The Convent has been the residence of the Governor of Gibraltar since 1728.</p>
4	<p>Complex Sentence Scholarships, Academic Awards, Flying Eagle Awards and Improvement Awards are given to students with outstanding academic achievements.</p> <p>Simple Sentence Scholarships, Academic Awards, Flying Eagle Awards and Improvement Awards are given to students with academic achievements.</p>
5	<p>Complex Sentence The blood vessels in the human body include arteries, veins and capillaries.</p> <p>Simple Sentence The blood vessels in the human body are called arteries, veins and capillaries.</p>
6	<p>Complex Sentence Frederick had a summer residence built there for Sophie Charlotte by the architect Johann Arnold Nering between 1695 and 1699.</p> <p>Simple Sentence Frederick had a summer residence built for Sophie Charlotte by the architect Johann Arnold Nering between 1695 and 1699.</p>
7	<p>Complex Sentence The film stars Al Pacino, John Cazale, Chris Sarandon, James Broderick, and Charles Durning.</p> <p>Simple Sentence The movie stars Al Pacino, John Cazale, Chris Sarandon, James Broderick, and Charles Durning.</p>
8	<p>Complex Sentence According to an interview in the UK newspaper The Sun, Heyman wrote the brand’s weekly scripts and submitted them to writers for possible changes, and then Vince McMahon for final approval.</p> <p>Simple Sentence According to an interview in the UK newspaper The Sun, Heyman wrote the brand’s weekly scripts and sent them to writers for possible changes, and then Vince McMahon for final approval.</p>
9	<p>Complex Sentence In March 2001, the World Wrestling Federation purchased World Championship Wrestling.</p> <p>Simple Sentence In March 2001, the World Wrestling Federation bought World Championship Wrestling.</p>
10	<p>Complex Sentence Becker defeated Jim Courier in straight sets to win the 1992 year-end ATP Tour World Championships in Frankfurt.</p> <p>Simple Sentence Becker defeated Jim Courier in straight sets to win the 1992 year-end ATP Tour World Championships.</p>

Table 7: Top 3-10 Examples from BERTPrec, ASSET Validation dataset.

Metric	Curie Simplifications
Random	there is a three volume manga series following graystripe between the time that he was taken by twolegs in dawn and he returned to thunderclan in the sight .
SARI	There is a three-volume original English-language manga series following graystripe, between the time he was taken by twolegs in dawn and he returned to thunderclan in the sight.
CR	There is a three volume manga series following graystripe between the time he was taken by twolegs in dawn and he returned to thunderclan in the sight.
BERTPrec	There is a three volume original English-language manga series following graystripe , between the time that he was taken by twolegs in dawn and he returned to thunderclan in the sight .

Table 8: Curie Simplifications for a selected complex sentence, ran on ASSET.

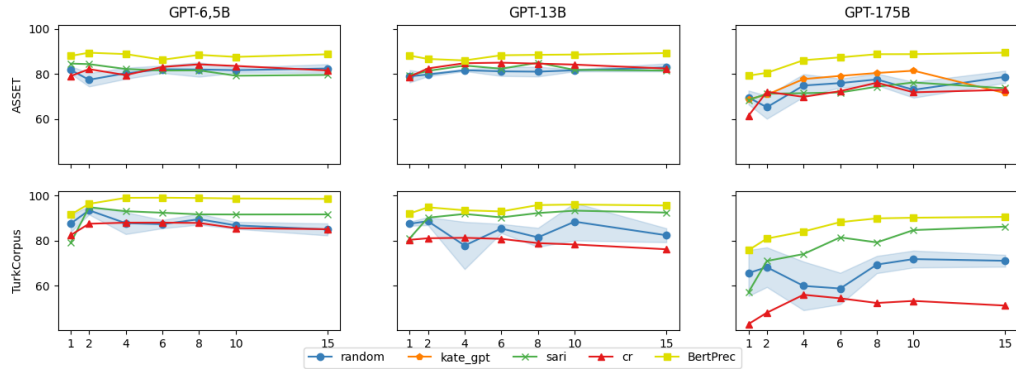


Figure 5: BLEU scores for GPT-6.5, GPT-13B and GPT-175B models on ASSET (top) and TurkCorpus (bottom) datasets.

Metric	Curie Simplifications
Random	oel manga series graystripe 's trilogy there is a three volume original english-language manga series following graystripe between the time that he was taken by twolegs in dawn until he returned to thunderclan in the sight .
SARI	oel manga series graystripe 's trilogy there is a three volume original english-language manga series following graystripe , between the time that he was taken by twolegs in dawn until he returned to thunderclan in the sight .
CR	OEL manga series, Graystripe 's Trilogy, has a three volume original English-language manga series following Graystripe, between the time that he was taken by twolegs in dawn until he returned to thunderclan in the sight.
BERTPrec	oel manga series graystripe 's trilogy there is a three volume original english-language manga series following graystripe , between the time that he was taken by twolegs in dawn until he returned to thunderclan in the sight .

Table 9: Babbage Simplifications for a selected complex sentence, ran on ASSET.

Original	OEL manga series Graystripe’s Trilogy There is a three volume original English-language manga series following Graystripe, between the time that he was taken by Twolegs in Dawn until he returned to ThunderClan in The Sight.
Reference Simplification	There is a three volume original English-language manga following Graystripe, between the time that he was taken by Twolegs in Dawn until he returned to ThunderClan in The Sight.
<hr/>	
k=2	
KATE-GPT	Graystripe’s Trilogy is a three volume original English-language manga series following Graystripe from when he was taken by Twolegs to his return to ThunderClan.
BERTPrec	Graystripe’s trilogy is a three-volume English-language manga series about his time between being taken by twolegs in Dawn and returning to ThunderClan in The Sight.
SARI	Graystripe’s trilogy is a three-volume original English-language manga series. It follows Graystripe between the time he was taken by Twolegs in Dawn and when he returned to ThunderClan in The Sight.
<hr/>	
k=8	
KATE-GPT	The Graystripe’s Trilogy is an OEL manga series that follows Graystripe’s journey between the time he was taken by Twolegs in Dawn and his return to ThunderClan in The Sight.
BERTPrec	Oel manga series Graystripe’s trilogy follows Graystripe between being taken by twolegs in Dawn and returning to ThunderClan in The Sight.
SARI	Graystripe’s trilogy is a three volume English-language manga series about his time away from ThunderClan in Dawn.
<hr/>	
k=15	
KATE-GPT	The OEL manga series Graystripe’s Trilogy follows Graystripe between the time he was taken by Twolegs in Dawn and when he returned to ThunderClan in The Sight.
BERTPrec	Oel manga series graystripe’s trilogy is a three-volume English-language manga series following Graystripe between his capture by twolegs in Dawn and his return to ThunderClan in The Sight.
SARI	Graystripe’s trilogy is a three-volume English-language manga series. It covers the time Graystripe was taken by twolegs in Dawn until he returned to ThunderClan in The Sight.

Table 10: Model-generated simplifications on ASSET, GPT-175B.