

Efficient Continual Pre-training for Building Domain Specific Large Language Models

Yong Xie*
Amazon Services LLC
yonxie@amazon.com

Karan Aggarwal
Amazon Services LLC
kagg@amazon.com

Aitzaz Ahmad
Amazon Services LLC
aitzaza@amazon.com

Abstract

Large language models (LLMs) have demonstrated remarkable open-domain capabilities. LLMs tailored for a domain are typically trained entirely on domain corpus to excel at handling domain-specific tasks. In this work, we explore an alternative strategy of continual pre-training as a means to develop domain-specific LLMs over an existing open-domain LLM. We introduce *FinPythia-6.9B*, developed through domain-adaptive continual pre-training on the financial domain. Continual pre-trained FinPythia showcases consistent improvements on financial tasks over the original foundational model. We further explore simple but effective data selection strategies for continual pre-training. Our data selection strategies outperform vanilla continual pre-training’s performance with just 10% of corpus size and cost, without any degradation on open-domain standard tasks. Our work proposes an alternative solution to building domain-specific LLMs cost-effectively.

1 Introduction

Large Language Models (LLMs) have exhibited a profound understanding of natural language, improving performance on various tasks (Brown et al., 2020). Open web data helps create general-purpose LLMs with a broad range of capabilities. General-purpose LLMs are however not “specialists”. For example, while LLMs could write good news articles, it would be hard-pressed to write specialized legal documents.

In order to create a specialist domain-specific LLM, they need to be trained on domain data. Approaches for building domain-specific LLMs fall into two categories: training

domain-specific LLMs from scratch or continually pre-training existing LLMs with domain data. Most researchers have taken the first approach of building domain-specific LLMs from scratch including the Med-PaLM family (Singhal et al., 2022, 2023) for the medical domain and BloombergGPT (Wu et al., 2023b) for finance. Little attention is paid to domain-adaptive continual pre-training, despite being a much cheaper alternative. Notably, PMC-LLaMA (Wu et al., 2023a), a medical LLM was trained through continual pre-training of LLaMA (Touvron et al., 2023) on medical papers. Continual pre-training can also be used for updating a LLM with the latest knowledge in an evolving environment.

In this work, we explore the following: 1) Is domain-adaptive continual pre-training helpful in building domain-specific LLMs?; 2) Can we employ data selection strategies for a more effective domain-adaptive continual pre-training?; and 3) Does domain-adaptive continual pre-training hurt LLM’s open-domain capabilities? We answer these questions in the confines of finance domain by training a continually pre-trained model, FinPythia, built on top of Pythia (Biderman et al., 2023).

We report a boost on financial benchmarks (Xie et al., 2023a) after continual pre-training on domain data of size 8% of what Pythia was trained on to answer the first question. We see an evidence of latest financial domain knowledge acquisition in FinPythia during qualitative analysis. To answer the second question, we propose two simple data selection techniques, task-aware *Efficient Task-Similar Domain-Adaptive Continual Pre-training* (ETS-DACP) and *Efficient Task-Agnostic Domain-Adaptive Continual Pre-training* (ETA-DACP). These methods outperform vanilla domain-adaptive continual pre-

*This work was done during author’s internship at Amazon

training with just 10% of selected domain data or 0.8% of Pythia’s training corpus. We use three metrics for data selection: similarity, perplexity, and token type entropy. While similarity needs task data as seed data, the latter two metrics are task-agnostic metrics. To answer the third question, we benchmark on four open-domain standard tasks and observe that continually pre-trained LLM retains its general capabilities while adapting to the domain.

The main contributions of this paper are threefold:

- We curate a large-scale financial corpus comprising 24 billion tokens sourced from financial datasets.
- Our experiments demonstrate the promise of building domain-specific LLMs through continual pre-training as an alternative to expensive pre-training from scratch, further extending the findings from smaller language models (LMs) (Gururangan et al., 2020; Xie et al., 2023b).
- We propose two Efficient Domain-adaptive Continual Pre-training methods as a more efficient approach to vanilla continual pre-training. Our novel approach deploys data selection strategies that can achieve better performance with a fraction of the cost of the domain-adaptive continual pre-training while beating the baselines from smaller language models.

2 Methodology

In this section, we describe the curation of our financial corpus used for continual pre-training, background concepts, and our proposed task-aware domain-adaptive continual pre-training.

2.1 Financial Corpus Curation

In our evaluation of data sources, we consider three dimensions: public availability, licensing, and scale. We use two sources of data for the financial corpus: the financial news common crawl and SEC filings. Financial News CommonCrawl is curated by filtering out financial news from the public CommonCrawl data. We follow the de-duplication procedure of Pythia suite (Biderman et al., 2023) to remove duplicate training data. Using these two sources, we

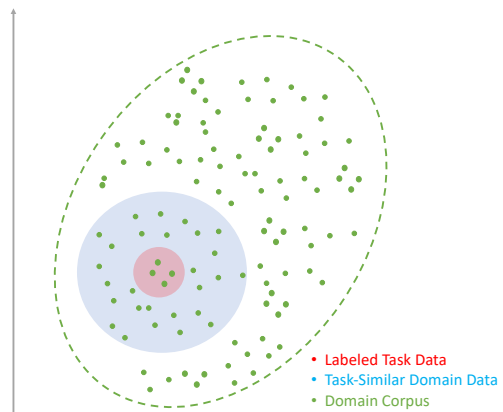


Figure 1: Relation between labeled task data, task-similar domain data and domain corpus.

create a combined dataset of 23.9 billion tokens (16.5 billion words) with details in Appendix G.

2.2 Background

Domain-adaptive Continual Pre-training (DACP) Typically, domain-specific LLMs are built by training the model from scratch using massive amounts of domain data. This procedure has two drawbacks: it is quite costly and needs much higher amounts of domain data, which is not as feasible in lower data domains like finance with very specialized confidential data. Domain-adaptive continual pre-training (DACP) is a straightforward alternative to building from scratch; we continually pre-train a general-purpose LLM on a large scale corpus of domain-specific unlabeled data. Domain-adaptive continual pre-training has shown the ability to adapt the LMs to better fit the in-domain distribution (Gururangan et al., 2020; Jin et al., 2022; Wu et al., 2022). They also enable large language models to acquire new knowledge as new data appears (Jang et al., 2022b,a), instead of training the model from scratch. We use DACP in our experiments to benchmark its benefits.

Task-Adaptive Continual Pre-training (TACP) Task-adaptive continual pre-training (TACP) refers to continual pre-training aiming to enhance performance on a targeted task. TACP has been studied in the context of smaller LMs like BERT by pre-training the LM on labeled and unlabeled data from the task (Gururangan et al., 2020;

Aharoni and Goldberg, 2020; Dai et al., 2019) showing improvements over the task. TACP has been used with pre-training loss objectives like Masked Language Modeling (MLM) loss on the training data of a downstream task for adapt the smaller LM to the downstream task **without** using any task labels. While task data is usually quite limited, TACP has shown considerable effects on smaller LMs like BERT. We benchmark TACP on our four financial evaluation tasks by continually pre-training the LLM on task’s data without any corresponding labels. Note, this is completely distinct than any supervised learning as no task labels are used in TACP.

2.3 Towards an Efficient Domain-adaptive Continual Pre-training

The primary limitation of TACP lies in constructing task-specific LLMs instead of foundation LLMs, owing to the sole use of unlabeled task data for training. While DACP uses a much larger corpus, it is prohibitively expensive. To balance these limitations, we propose two approaches: *Efficient Task-Similar Domain-Adaptive Continual Pre-training* (ETS-DACP) and *Efficient Task-Agnostic Domain-Adaptive Continual Pre-training* (ETA-DACP). While ETS-DACP aims to build foundation LLMs for a set of tasks by tailoring the DACP to emphasize the significance of these tasks, ETA-DACP is more general by selecting most informative samples from the domain corpus.

Efficient Task-Similar Domain-adaptive Continual Pre-training We stipulate that we can form an optimal set \mathcal{D}^* by selecting a portion of the domain data that is much closer to the task data (red) given by the blue region based on intuition before. We refer to this as *Efficient Task-Similar Domain-adaptive Continual Pre-training* (ETS-DACP). Fine-tuning LLMs can take a good amount of instructions, which are quite costly to create. ETS-DACP directly addresses this situation by using the relatively limited unlabeled task data to sample similar samples from the larger pool of pre-training domain corpus. We are motivated by prior research showing unsupervised training on tokens aligning closely with the target

domain/tasks leads to improved performance (Gururangan et al., 2020; Aharoni and Goldberg, 2020; Dai et al., 2019). Therefore, we hypothesize that continual pre-training LLMs on the unlabeled task data can be beneficial for target task performance by adapting the model to the task distribution.

We use similarity between embeddings of task data and domain corpus samples to perform data selection. This allows us to select a subset from the domain corpus that closely resembles the distribution of task data. To quantify document-level task similarity, we employ cosine similarity between the document embedding and task data embedding using the *Spacy* model (Honnibal and Montani, 2017). This approach allows us to cost-effectively measure the alignment between task-specific information and the financial corpus, enabling more focused and targeted pre-training.

Efficient Task-Agnostic Domain-adaptive Continual Pre-training While the previous case dealt with scenarios where task data is provided to us, we further explore scenarios where we do not have task data. This method also overcomes the limitation of ETS-DACP which makes the LLM too tuned to the task data instead of broader domain. We stipulate that two dimensions are important for obtaining domain information from a subset of pre-training domain data: **novelty** and **diversity**.

Novelty refers to the information that was unseen by the LLM before. We gauge the level of novelty in a document based on the **perplexity** recorded by LLM. Documents with higher perplexity are less represented in the original training corpus, thus being more likely to contain novel knowledge for the model. Such samples are also viewed as more difficult to learn (Bengio et al., 2009). Hence, these samples can be valuable in continual pre-training to acquire novel information. Using perplexity directly from the LLM incurs significant costs, as the inference requires approximately 25% of the training compute. To minimize this cost, we employ Pythia-70m as a surrogate model for computing document perplexity. Our preliminary experiment using a sample dataset reveals a strong correlation of 0.97 between the perplexity obtained from Pythia-1B and Pythia-70m. This high correlation justifies the

Method	Data Selection Metric	Non-task Unlabeled Data	Task Unlabeled Data	Task Labeled Data
DACP	None	✔	✘	✘
TACP	None	✘	✔	✘
ETS-DACP	Similarity	✔	✔	✘
ETA-DACP-ppl	Perplexity	✔	✘	✘
ETA-DACP-ent	Entropy	✔	✘	✘
ETS-DACP-com	Similarity, Perplexity, Entropy	✔	✔	✘
(Instruction) Fine-Tuning	None	✘	✘	✔

Table 1: Data selection metrics and data sources used for each method. ✔ indicates “yes”, while ✘ indicates “no”. Task unlabeled data refers to task data with stripped off labels.

use of a smaller model as a reliable surrogate, enabling a cost-effective sampling.

Diversity captures the diversity of distributions of token types in the domain corpus. Diversity has been shown to be an effective feature in related research on curriculum learning in language modeling (Tsvetkov et al., 2016; Ruder and Plank, 2017). We use part-of-speech (POS) tagging to get token types. Since entropy has been shown to be one of the best measures of diversity (Bengio et al., 2009), we use **entropy** of POS tags (Tsvetkov et al., 2016) as our diversity measure.

2.3.1 Data Sampling Strategy

We proposed ETS-DACP and ETA-DACP to enhance vanilla DACP by refining pre-training data through active selection of relevant samples. We can select the data in two ways:

Hard Sampling: We rank the samples in the domain corpus by the metric percentile. We select top-k samples from the domain corpus based on the metric(s), where k is the number of samples needed to meet pre-decided token budget for pre-training.

Soft Sampling: In this case, instead of giving binary weights by leaving out the examples below top-k, we assign soft weights based on the distance metric. Taking similarity metric as an example distance metric, let’s say a sample with a similarity score of 0.9. This is normalized and treated as the probability of selecting the sample. This procedure allows for the continual pre-training to see the non-task samples outside the blue region in Figure 1, adding diversity to pre-training data.

We use the following three dimensions for selecting samples: similarity to task data (ETS-DACP), perplexity as a proxy for novelty (ETA-DACP), and diversity measured by token type entropy (ETA-DACP). In order to convert met-

ric values into sampling probabilities, we propose a method based on quantile ranges. To achieve this, we first calculate the 0-100 quantiles for each metric. Probability is each document is equal to the metric quantile it falls onto. This approach effectively normalizes our metrics, also allowing for the aggregation of different metric types.

Table 1 gives a summary of all the methods presented in this work and traditional methods for domain adaptation of a LLM along with their requirements.

3 Experimental Setup

3.1 Evaluation tasks

Finance Domain Tasks We evaluate the models on financial tasks to evaluate the effectiveness of our domain-adaptive continual pre-training. We adopt the *FLARE* framework (Xie et al., 2023a) to evaluate our models. FLARE extends the LLM evaluation framework *lm-evaluation-harness*¹ by including various financial tasks. We follow their instruction prompt, data split, and metric computation for comparison. We consider following 4 tasks used in Wu et al., 2023b; Xie et al., 2023a: (1) **Financial Phrase Bank**. FPB is a sentiment classification task on financial news (Malo et al., 2014). The sentiment reflects whether the news is considered as positive/neutral/negative by investors. (2) **FiQA SA**. An aspect based sentiment classification task based on financial news and headlines (Maia et al., 2018). (3) **Headline**. Binary classification task on whether a headline on a financial entity contains certain information (Sinha and Khandait, 2020). Each news article is associated with 9 tags like “price or not”, “price up”, “price down”, “price stable”, “past price”, and “as-

¹<https://github.com/EleutherAI/lm-evaluation-harness>

		BloombergGPT	OPT 7B	BLOOM 7B	GPT-J-6B	Pythia 1B	FinPythia 1B	Pythia 7B	FinPythia 7B
FPB	Acc	-	57.22	52.68	50.21	42.85	<u>47.14</u>	54.64	<u>59.90</u>
	F1	51.07*	65.77	52.11	49.31	43.94	<u>46.52</u>	55.79	<u>64.43</u>
FiQA SA	Acc	-	40.43	70.21	60.42	<u>54.51</u>	46.13	<u>60.85</u>	52.34
	F1	75.07*	31.29	74.11	62.14	<u>56.29</u>	44.53	<u>61.33</u>	53.04
Headline	F1	82.20*	62.62	42.68	45.54	44.73	<u>53.02</u>	43.83	<u>54.14</u>
NER	F1	60.82*	41.91	18.97	35.87	49.15	55.51	41.60	<u>48.42</u>
Average	F1	67.29*	50.40	46.97	48.22	48.53	<u>49.90</u>	50.64	54.83
$\Delta(\%)$	Avg-F1	-	-	-	-	0.00	2.82%	0.00	8.27%

Table 2: 5-shot results on financial tasks from domain adaptive continual pre-training. * indicates the results extracted from BloombergGPT (Wu et al., 2023b) evaluated with different data split and is not directly comparable with others. **Bold** indicates the best results among all the evaluated models except BloombergGPT. Underline indicates the better results between FinPythia and Pythia of same size. $\Delta(\%)$ is the % difference between the Average F1 of four tasks with FinPythia and Pythia of same model size.

set”. (4) **NER**. Financial named entity extraction task is based on credit risk assessment section of SEC reports. Words in this task are annotated with PER, LOC, ORG, and MISC.

General Domain Tasks To evaluate the effect of domain training on the non-domain abilities, we evaluate on the following open domain tasks: (1) **ARC** (Boratto et al., 2018): measures the ability of predicting an output grid after a demonstration of a task for the first time; (2) **MMLU** (Hendrycks et al., 2020): tests knowledge of 57 tasks including elementary mathematics, history, and law; (3) **TruthfulQA**: Measures question answering ability on 817 questions in 38 categories (Lin et al., 2021). (4) **HellaSwag** (Zellers et al., 2019): measures commonsense ability to generate a relevant follow up sentence, given an event description.

3.2 Baselines

We compare against the following versus the proposed efficient continual pre-training methods.

3.3 Training Setup and Infrastructure

For our benchmark pre-trained LLM model, we select 1B and 6.9B parameter models from the Pythia suite (Biderman et al., 2023). The Pythia model suite offers a diverse array of model sizes, ranging from 70 million to 12 billion parameters. Continual pre-training configuration is derived from Pythia’s training setup reported in Biderman et al. (2023). Specifically, we set a learning rate of 1.2e-05 for FinPythia-6.9B and 3e-05 for *FinPythia-1B*, the smallest learning rates in their original schedules. We use small learning rates to mitigate catastrophic forgetting. We keep them constant throughout the course for efficient pre-training.

We use the precision of bf16 rather than fp16 used in Pythia. We half the original batch size to 512. We run the continual pre-training job on a single AWS P4d.24xlarge instance. As the model size is moderate, we only use data parallelism via DeepSpeed ZeRO Stage 2 (Rasley et al., 2020) with activation checkpointing enabled. It takes 18 days for FinPythia-6.9B to pre-train and 3 days for FinPythia-1B to pre-train on 24 billion tokens.

4 Results and Analysis

4.1 Domain-adaptive Continual Pre-training

To evaluate financial domain tasks, we compare FinPythia with Pythia and other open-sourced models of similar size: OPT-7B (Zhang et al., 2022), BLOOM-7B (Scao et al., 2022), and GPT-J-6B (Wang and Komatsuzaki, 2021). While we report results from open-sourced models, the main insights are obtained from the comparison between Pythia and FinPythia, as their difference reflects the effect of domain-adaptive continual pre-training. Models are evaluated in a 5-shot setting for each task. Shots are randomly sampled from the tasks’ training dataset for each test instance following FLARE (Xie et al., 2023a) benchmark.

Results are reported in Table 2. FinPythia-6.9B and FinPythia-1B exhibit superior performance except on the FiQA SA task compared with Pythia counterparts. DACP boosts the average task performance by 2.8% for the 1B model and 8.3% for the 6.9B model. These outcomes directly substantiate the impact of domain-adaptive continual pre-training for enhancing domain performance. Furthermore, Pythia-6.9B outperforms OPT-7B, BLOOM-

7B, and GPT-J-6B. For comparison with BloombergGPT please see Appendix A.

4.2 Efficient Domain-adaptive Continual Pre-training

FLARE uses 5-shot in-context performance over the entire training data, *i.e.*, each test sample while evaluating each model sees different train samples. This makes it harder to compare different models, as each test example sees 5 completely different training examples across models during inference. In real world, there is a limited set of labeled samples with no luxury of seeing a large training data. We observed a high standard deviation owing to this randomness in selection across the large training dataset. *To overcome this randomness and make the comparisons fair across models, we set aside a pool of 50 labeled data samples from the training dataset for each task, referred to as the “shot pool”.* For the remaining training samples, we remove their labels and utilize them as unlabeled task data, which is used in our data selection strategy using task data. This particular configuration is adopted because we do not have access to unlabeled task data. By using this setup, we also simulate the constraints posed by scarce labeled data. Although this approach creates unlabeled task data - the size is still small, containing only 0.24 million tokens from the four tasks.

We select 10% subset of the corpus with each efficient DACP method. We also create another version of ETS-DACP called **ETS-DACP-com** by using the other two measures with similarity by averaging all three measures for ranking. Both the TACP and Efficient DACP methods run for a single epoch, employing the same pre-training configuration as DACP to ensure a fair comparison. We run these experiments with Pythia-1B due to the compute budget. Evaluation is performed ten times using 10 random seeds and mean performance is reported for each of our four tasks.

The evaluation results are presented in Table 3. While TACP shows significant improvement in model performance compared to the original Pythia-1B, ETS-DACP stands out as the top-performing approach among DACP, TACP, and our proposed efficient DACP methods in terms of average task performance. This enhanced performance cannot be solely attributed to the

increased number of tokens, as DACP with the same amount of tokens yields inferior results. The results underscore the efficacy of both task-adaptive and domain continual pre-training LLMs on unlabeled task data, in line with results observed in smaller language models (Aharoni and Goldberg, 2020). We can observe the following: 1) ETS-DACP trained on 10% outperforms DACP on 100% data; 2) ETS-DACP has the best performance among all three counterparts and is on par with a combination of three metrics - ETS-DACP-com; 3) ETA-DACP-ent trained on 10% corpus is a close second despite not having any access to task data, handily surpassing vanilla DACP; and 4) Efficient DACP methods with hard sampling outperform ones with soft sampling.

These results clearly show that ***not all data is equal for continual pre-training***; all the data used in efficient DACP methods (10%) is a subset of the data in DACP. Since DACP’s (100%) performance is lower than ETS-DACP/ETA-DACP-ent. Adding more data on top of highly similar or high entropy data actually hurts the performance. The difference in results between hard and soft sampling adds more evidence to this observation. While there is variability across tasks, on an average, adding examples outside the most interesting/similar examples hurts the performance with a notable exception of ETS-DACP-com which is a combination of all three metrics. Hence, data should be carefully curated for any domain continual pre-training.

Note, 10% of domain data (2.39B) translates to less than 1% of the 300 billion tokens base Pythia was trained on. Hence, being selective during the data curation process for continual pre-training can have large effects on domain performance at a small cost. These results demonstrate the effectiveness of continual pre-training on domains and task (sub-domains). A natural question that arises from this exercise is ***whether the LLM is losing its generality by being further tuned on a narrow domain?*** In short, is the LLM becoming a specialist at the expense of being a generalist? We answer this question by measuring the performance of continually pre-trained LLM variants on out-of-domain tasks which Pythia was evaluated on. Table 4 shows the performance on the standard four non-finance tasks.

	Tokens	FPB F1	FiQA SA F1	Headline F1	NER F1	Average F1	Win Rate (%)	$\Delta(\%)$
Pythia 1B	0	52.84 (15.5)	65.32 (13.7)	45.61 (10.0)	48.77 (13.7)	53.14 (7.5)	50.0	0.00
DACP	2.39B (10%)	64.77 (10.4)	59.85 (19.0)	41.41 (6.5)	<u>51.32</u> (7.6)	54.34 (8.9)	62.5	2.25%
DACP (FinPythia 1B)	23.9B (100%)	59.16 (12.1)	52.84 (18.1)	53.34 (9.4)	55.20 (5.8)	55.14 (2.5)	58.3	3.76%
TACP	0.24M	66.80 (10.5)	<u>72.27</u> (2.2)	38.91 (1.5)	50.55 (11.7)	57.13 (13.2)	60.4	7.50%
DSIR (Xie et al., 2023b)	2.29B (10%)	73.74 (1.4)	42.08 (25.5)	45.75 (9.3)	49.71 (14.2)	52.82 (12.4)	62.5	-0.6%
RepSet (Suzuki et al., 2023)	2.29B (10%)	71.36 (4.4)	53.18 (25.2)	43.51 (5.6)	46.81 (14.9)	53.71 (10.8)	52.1	1.07%
Hard Sampling								
ETS-DACP	2.39B (10%)	67.11 (9.6)	50.84 (21.9)	71.56 (7.1)	49.52 (8.4)	59.76 (9.7)	66.7	12.45%
ETA-DACP-ppl	2.39B (10%)	<u>73.66</u> (1.9)	45.86 (24.9)	39.11 (2.0)	48.69 (8.5)	51.83 (13.1)	43.8	-2.4%
ETA-DACP-ent	2.39B (10%)	69.58 (8.4)	58.14 (19.1)	59.83 (11.1)	46.18 (15.7)	58.43 (8.3)	<u>64.6</u>	9.99%
ETS-DACP-com	2.39B (10%)	62.58 (14.7)	72.83 (1.8)	53.91 (11.6)	48.34 (15.9)	<u>59.41</u> (9.3)	66.7	11.79%
Soft Sampling								
ETS-DACP	2.39B (10%)	72.45 (3.4)	47.08 (18.1)	40.82 (7.9)	46.16 (15.1)	51.63 (12.3)	35.4	-2.84%
ETA-DACP-ppl	2.39B (10%)	61.44 (18.4)	52.44 (13.6)	41.00 (5.6)	43.80 (13.7)	49.67 (8.0)	20.8	-6.5%
ETA-DACP-ent	2.39B (10%)	68.20 (9.5)	57.00 (22.5)	<u>62.06</u> (11.4)	38.00 (19.6)	56.31 (11.3)	56.3	5.96%
ETS-DACP-com	2.29B (10%)	64.41 (11.0)	67.97 (9.2)	51.22 (12.5)	47.68 (13.8)	57.82 (8.6)	58.3	8.80%

Table 3: Effect of TACP and efficient DACP measured by 5-shot results on financial tasks with Pythia-1B. Mean and standard deviation (in parenthesis) of 10 runs are reported. ETA-DACP-ppl is ETA-DACP based on perplexity, and ETA-DACP-ent based on entropy. ETS-DACP-com is task similar DACP with data selection by averaging all three metrics. Win rate is percentage of times a model is more accurate than other models in a pair-wise comparison (Liang et al., 2022). **Bold** indicates the best results and underline indicates the second best per task. $\Delta(\%)$ denotes the % difference versus base Pythia 1B’s average F1. Note, the results in third row (DACP 100%) correspond to FinPythia 1B results in Table 2. The difference in results between the two tables is because we fixed the pool of 5-shot examples for a fair comparison between all the experiments versus random 5-shots in previous works (Wu et al., 2023b).

We do not observe any significant change in the performance on the four out-of-domain tasks.

4.3 Ablation on Percentage of Pre-training Data Selected

We show ablation with percentage of pre-training data in Figure 2. We see ETS-DACP and ETA-DACP-ent methods saturate near an average F1 score of 59% at 5% of pre-trained data and start declining after using 10% of pre-trained data. This shows that adding samples that are not as informative, drops the performance as LLM learns over not so useful examples, adjusting its distribution. For DACP,

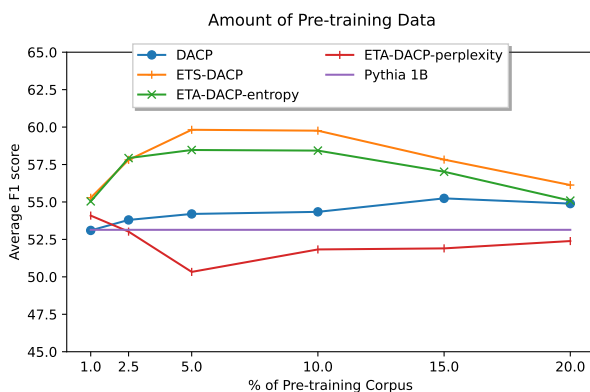


Figure 2: Ablation of amount of pre-training data versus F1 score for continual pre-training methods.

we observe a constant increase in performance. We observe an interesting trend in perplexity with a higher performance than DACP with 1% of selected pre-trained data. It starts to drop significantly afterwards, reaching the lowest performance at 5% of the training data, and recovering afterwards. On further investigation by randomly sampling the perplexity based data selected between 1%-5% of pre-training sample region, we saw a particularly examples with long tables, devoid of natural language text. This change in distribution versus the rest of pre-training corpus and tasks could explain the drop in performance with perplexity based data selection.

Comparison of Data Selection Metrics

From the results in Table 1 and Figure 2, we can observe that task similarity based selection works the best: similarity of training data with the task data is most beneficial while (pre-) training. Entropy is a close second but an effective task-agnostic data selection technique for domain pre-training. Highest entropy samples are selected based on the named entity distribution; these samples would have a more variety of domain specific entities like names, versus lower entropy samples. Our hypothesis is that such samples expose LLM to more domain knowledge than the lower entropy sam-

	Tokens	ARC		MMLU		TruthfulQA		HellaSwag		Average		$\Delta(\%)$
		Acc	Acc Norm	Acc	Acc Norm	MC1	MC2	Acc	Acc Norm	Acc	Acc Norm	
Pythia 1B	0	25.94	29.27	26.29	26.29	23.62	40.47	37.65	47.83	28.38	35.96	0.00
DACP	2.39B (10%)	26.28	29.44	26.43	26.43	24.48	42.26	36.83	45.34	28.50	35.87	0.42%
DACP (FinPythia 1B)	23.9B (100%)	24.32	27.47	26.09	26.09	24.60	42.05	35.34	42.45	27.59	34.52	-2.78%
TACP	0.24M	25.34	28.41	24.93	24.93	24.48	41.95	37.03	47.27	27.95	35.64	-1.51%
Hard Sampling												
ETS-DACP	2.39B (10%)	24.74	28.07	25.99	25.99	23.26	43.85	36.31	44.79	27.57	35.68	-2.85%
ETA-DACP-ppl	2.39B (10%)	26.71	28.41	26.31	26.31	24.97	41.42	36.70	44.89	28.67	35.26	1.02%
ETA-DACP-ent	2.39B (10%)	25.34	27.99	24.60	24.60	24.11	41.38	36.92	44.98	27.75	34.74	-2.21%
ETS-DACP-com	2.39B (10%)	26.37	29.35	26.58	26.58	24.48	41.51	36.61	44.97	28.51	35.60	0.45%
Soft Sampling												
ETS-DACP	2.39B (10%)	26.45	28.33	27.10	27.10	24.60	41.73	36.24	44.49	28.60	35.41	0.77%
ETA-DACP-ppl	2.39B (10%)	25.85	29.69	26.59	26.59	24.85	42.17	36.55	44.71	28.46	35.79	0.28%
ETA-DACP-ent	2.39B (10%)	25.94	29.10	25.61	25.61	24.60	41.64	36.78	45.20	28.23	35.39	-0.52%
ETS-DACP-com	2.39B (10%)	25.77	27.47	27.05	27.05	24.24	41.82	36.93	44.62	28.50	35.24	0.42%

Table 4: Evaluation on standard tasks **Bold** indicates the best value for a column. We follow the evaluation practice used to create HuggingFace Open LLM leaderboard. $\Delta(\%)$ is the percentage difference between average accuracy of Continually pre-trained LLM and Pythia 1B.

ples with lower type of different entities and hence, less informative. Perplexity exhibits an interesting phenomenon: there is benefit with an initial set of top-1% perplexity samples but not any further. High perplexity samples are more novel for the model but novelty can come both from out-of-distribution as well as lower quality samples. We do observe mostly high quality financial articles in top-1% of perplexity samples while in top 1% to top 5% perplexity range, we observed samples with long tables which arguably are noisy on what the foundational model has been trained on. Hence, perplexity has a high probability of being affected by the noise in the data which score high on perplexity metric versus entropy metric.

Since, most of large datasets can have noisy samples, perplexity based data selection is not a good idea. Correlation between perplexity and other two metrics: similarity (0.21) and entropy (0.14) is quite low. Hence, these two avoid selecting these noisy samples. Given that we generally want our domain LLMs to perform well over unseen tasks, adapting the pre-training to a task agnostic framework is better. *Based on our experiments, entropy metric scores high both on task agnostic as well as performance on downstream tasks.*

5 Related Work

Domain specific large language models. While the majority of released LLMs are general-purpose models, domain-specific LLMs have emerged as valuable counterparts. MedPaLM, trained on a medical corpus, achieved state-of-the-art results on medical benchmarks

(Singhal et al., 2022, 2023) while Bloomberg developed a financial LLM from scratch on a financial corpus (Wu et al., 2023b). Continual pre-training presents an alternative approach to building domain-specific LLMs from scratch. Wu et al. (2023a) build medical LLMs through vanilla continual pre-training LLaMA (Touvron et al., 2023) on medical papers.

Continual pre-training of Language Models. Continual pre-training of LMs on unlabeled data for a given task has been demonstrated to be beneficial for task performance (Aharoni and Goldberg, 2020; Gururangan et al., 2020). Aharoni and Goldberg (2020) document that continual pre-training on a similar domain contributes to task performance. Notably, the work closest to ours is Xie et al. (2023b), that selects the data based on an importance sampling scheme with weighting using relevance to the target task data distribution. While these works exclusively use task data, we also propose a task agnostic method, ETA-DACP, as task similarity is not always feasible. Other methods like DAS (Ke et al., 2023), do not perform a pre-selection of data as they perform the importance sampling on the fly, making it 3x more expensive than vanilla pre-training. Further, DAS uses contrastive learning between two copies of the model elevating memory requirements.

In contrast to all these methods which have done experiments on small language models like BERT/roBERTa, *we are the first ones to explore data selection for continual pre-training for Large Language Models (LLMs)*, to best of our knowledge.

Data selection. Data selection for continual pre-training plays a critical role in choosing the most valuable samples for the training process. Various linguistic features independent of specific domains or tasks have been shown to be beneficial for data selection and learning curricula (Ruder and Plank, 2017; Tsvetkov et al., 2016). In the context of LLMs, there is a limited understanding of how to curate data for pre-training, let alone for continual pre-training. *To best of our knowledge, ours is the first work that attempts data selection in the context of LLMs for continual pre-training.*

6 Conclusion

In this paper, we demonstrate the efficacy of domain-adaptive continual pre-training for developing domain-specific LLMs. Our results show that domain-adaptive continual pre-training improves the LLMs’ performance on financial tasks and it enables the LLMs to acquire domain knowledge at a much lower cost.

Furthermore, we propose efficient domain-adaptive continual pre-training methods, ETS-DACP and ETA-DACP, to enhance continual pre-training. By being selective during the training data curation, our methods refine continual pre-training, yielding even better results with just 10% of the data (cost) of vanilla continual pre-training. Entropy based task-agnostic data selection works almost at par with the task-aware data selection strategy. This finding can be used on data selection for continual pre-training even in the absence of a task. We also observe no degradation in performance on open-domain standard tasks, implying that domain continual pre-training does not hurt open-domain capabilities.

Our findings place domain continual pre-training as a strong alternative to building domain-specific LLMs from scratch. By being smarter about data selection, we can surpass vanilla continual pre-training at a fraction of the cost. Contrary to the wide belief that just adding more data helps, our results suggest that quality of data matters too. While domain continual pre-training has been studied widely in small LM literature, we provide a unique insight in LLMs given the scale and costs involved. Overall, our work paves the way for developing domain-specific LLMs at

a reduced cost, with implications for a wide range of LLM applications.

7 Limitations

We see the following limitations in our work:

Huge Computational Requirements We used p4d.24xlarge instance on AWS to run our experiments, which is quite costly: \$800-\$1000/day. Hence, it is quite expensive to run these experiments and very few researchers have the resources to run these kind of experiments. However, since our method is trying to solve this exact problem by reducing the cost of pre-training, we believe our work should be helpful in increasing democratization of LLMs, though still quite expensive.

Domain Generalization: Our results and experiments have been done entirely on the Finance domain. These results may or may not generalize to other domains. We are unable to extend this to other domains because of huge costs associated with pre-training experiments.

Model Generalization: Our data selection methods have been tested on Pythia 1B model. This might not generalize to larger model sizes, however. The computational costs of experimenting these four variants of our data selection strategies discussed in this paper are quite prohibitive to be shown on larger model sizes like 7B. However, our results in Table 2 showing continual pre-training on 7B model had a much larger effect (+8.27%) than the 1B counter part (+2.82%), are quite encouraging.

Comparison with training a Domain LLM from scratch: While we present a much cheaper alternative than training a domain LLM from scratch, it is not still clear which one of the two: training a domain LLM from scratch or continually pre-training is a better strategy for creating a domain LLM.

References

- Roei Aharoni and Yoav Goldberg. 2020. [Unsupervised domain clusters in pretrained language models](#). In *Proceedings of the 58th Annual Meeting of the Association for Computational Linguistics, ACL 2020, Online, July 5-10, 2020*, pages 7747–7763. Association for Computational Linguistics.
- Shai Ben-David, John Blitzer, Koby Crammer, Alex Kulesza, Fernando Pereira, and Jennifer Wort-

- man Vaughan. 2010. A theory of learning from different domains. *Machine learning*, 79:151–175.
- Yoshua Bengio, Jérôme Louradour, Ronan Collobert, and Jason Weston. 2009. [Curriculum learning](#). In *Proceedings of the 26th Annual International Conference on Machine Learning, ICML 2009, Montreal, Quebec, Canada, June 14-18, 2009*, volume 382 of *ACM International Conference Proceeding Series*, pages 41–48. ACM.
- Stella Biderman, Hailey Schoelkopf, Quentin Gregory Anthony, Herbie Bradley, Kyle O’Brien, Eric Hallahan, Mohammad Aflah Khan, Shivanshu Purohit, USVSN Sai Prashanth, Edward Raff, et al. 2023. Pythia: A suite for analyzing large language models across training and scaling. In *International Conference on Machine Learning*, pages 2397–2430. PMLR.
- Michael Boratko, Harshit Padigela, Divyendra Mikkilineni, Pritish Yuvraj, Rajarshi Das, Andrew McCallum, Maria Chang, Achille Fokoue-Nkoutche, Pavan Kapanipathi, Nicholas Mattei, et al. 2018. A systematic classification of knowledge, reasoning, and context within the arc dataset. *arXiv preprint arXiv:1806.00358*.
- Tom Brown, Benjamin Mann, Nick Ryder, Melanie Subbiah, Jared D Kaplan, Prafulla Dhariwal, Arvind Neelakantan, Pranav Shyam, Girish Sastry, Amanda Askell, et al. 2020. Language models are few-shot learners. *Advances in neural information processing systems*, 33:1877–1901.
- Xiang Dai, Sarvnaz Karimi, Ben Hachey, and Cécile Paris. 2019. [Using similarity measures to select pretraining data for NER](#). In *Proceedings of the 2019 Conference of the North American Chapter of the Association for Computational Linguistics: Human Language Technologies, NAACL-HLT 2019, Minneapolis, MN, USA, June 2-7, 2019, Volume 1 (Long and Short Papers)*, pages 1460–1470. Association for Computational Linguistics.
- Junwen Duan, Yue Zhang, Xiao Ding, Ching Yun Chang, and Ting Liu. 2018. Learning target-specific representations of financial news documents for cumulative abnormal return prediction. In *Proceedings of the 27th international conference on computational linguistics*, pages 2823–2833.
- Yaroslav Ganin, Evgeniya Ustinova, Hana Ajakan, Pascal Germain, Hugo Larochelle, François Laviolette, Mario Marchand, and Victor S. Lempit-sky. 2016. [Domain-adversarial training of neural networks](#). *J. Mach. Learn. Res.*, 17:59:1–59:35.
- Suchin Gururangan, Ana Marasović, Swabha Swayamdipta, Kyle Lo, Iz Beltagy, Doug Downey, and Noah A. Smith. 2020. [Don’t stop pretraining: Adapt language models to domains and tasks](#). In *Proceedings of the 58th Annual Meeting of the Association for Computational Linguistics*, pages 8342–8360. Online. Association for Computational Linguistics.
- Dan Hendrycks, Collin Burns, Steven Basart, Andy Zou, Mantas Mazeika, Dawn Song, and Jacob Steinhardt. 2020. Measuring massive multi-task language understanding. *arXiv preprint arXiv:2009.03300*.
- Matthew Honnibal and Ines Montani. 2017. spaCy 2: Natural language understanding with Bloom embeddings, convolutional neural networks and incremental parsing. To appear.
- Joel Jang, Seonghyeon Ye, Changho Lee, Sohee Yang, Joongbo Shin, Janghoon Han, Gyeonghun Kim, and Minjoon Seo. 2022a. [Temporalwiki: A lifelong benchmark for training and evaluating ever-evolving language models](#). In *Proceedings of the 2022 Conference on Empirical Methods in Natural Language Processing, EMNLP 2022, Abu Dhabi, United Arab Emirates, December 7-11, 2022*, pages 6237–6250. Association for Computational Linguistics.
- Joel Jang, Seonghyeon Ye, Sohee Yang, Joongbo Shin, Janghoon Han, Gyeonghun Kim, Stanley Jungkyu Choi, and Minjoon Seo. 2022b. [Towards continual knowledge learning of language models](#). In *The Tenth International Conference on Learning Representations, ICLR 2022, Virtual Event, April 25-29, 2022*. OpenReview.net.
- Xisen Jin, Dejiao Zhang, Henghui Zhu, Wei Xiao, Shang-Wen Li, Xiaokai Wei, Andrew O. Arnold, and Xiang Ren. 2022. [Lifelong pretraining: Continually adapting language models to emerging corpora](#). In *Proceedings of the 2022 Conference of the North American Chapter of the Association for Computational Linguistics: Human Language Technologies, NAACL 2022, Seattle, WA, United States, July 10-15, 2022*, pages 4764–4780. Association for Computational Linguistics.
- Zixuan Ke, Yijia Shao, Haowei Lin, Tatsuya Konishi, Gyuhak Kim, and Bing Liu. 2023. Continual pre-training of language models. In *The Twelfth International Conference on Learning Representations*.
- Percy Liang, Rishi Bommasani, Tony Lee, Dimitris Tsipras, Dilara Soylu, Michihiro Yasunaga, Yian Zhang, Deepak Narayanan, Yuhuai Wu, Ananya Kumar, et al. 2022. Holistic evaluation of language models. *arXiv preprint arXiv:2211.09110*.
- Stephanie Lin, Jacob Hilton, and Owain Evans. 2021. Truthfulqa: Measuring how models mimic human falsehoods. *arXiv preprint arXiv:2109.07958*.
- Hong Liu, Sang Michael Xie, Zhiyuan Li, and Tengyu Ma. 2023. Same pre-training loss, better downstream: Implicit bias matters for language models. In *International Conference on Machine Learning*, pages 22188–22214. PMLR.

- Lefteris Loukas, Manos Fergadiotis, Ion Androutsopoulos, and Prodromos Malakasiotis. 2021. [EDGAR-CORPUS: billions of tokens make the world go round](#). *CoRR*, abs/2109.14394.
- Macedo Maia, Siegfried Handschuh, André Freitas, Brian Davis, Ross McDermott, Manel Zarrouk, and Alexandra Balahur. 2018. [Www'18 open challenge: Financial opinion mining and question answering](#). In *Companion of the The Web Conference 2018 on The Web Conference 2018, WWW 2018, Lyon , France, April 23-27, 2018*, pages 1941–1942. ACM.
- Pekka Malo, Ankur Sinha, Pekka J. Korhonen, Jyrki Wallenius, and Pyry Takala. 2014. [Good debt or bad debt: Detecting semantic orientations in economic texts](#). *J. Assoc. Inf. Sci. Technol.*, 65(4):782–796.
- Yu Qin and Yi Yang. 2019. What you say and how you say it matters: Predicting stock volatility using verbal and vocal cues. In *Proceedings of the 57th Annual Meeting of the Association for Computational Linguistics*, pages 390–401.
- Jeff Rasley, Samyam Rajbhandari, Olatunji Ruwase, and Yuxiong He. 2020. [Deepspeed: System optimizations enable training deep learning models with over 100 billion parameters](#). In *KDD '20: The 26th ACM SIGKDD Conference on Knowledge Discovery and Data Mining, Virtual Event, CA, USA, August 23-27, 2020*, pages 3505–3506. ACM.
- Sebastian Ruder and Barbara Plank. 2017. [Learning to select data for transfer learning with bayesian optimization](#). In *Proceedings of the 2017 Conference on Empirical Methods in Natural Language Processing, EMNLP 2017, Copenhagen, Denmark, September 9-11, 2017*, pages 372–382. Association for Computational Linguistics.
- Tevan Le Scao, Angela Fan, Christopher Akiki, Elie Pavlick, Suzana Ilic, Daniel Hesslow, Roman Castagné, Alexandra Sasha Luccioni, François Yvon, Matthias Gallé, Jonathan Tow, Alexander M. Rush, Stella Biderman, Albert Webson, Pawan Sasanka Ammanamanchi, Thomas Wang, Benoît Sagot, Niklas Muennighoff, Albert Villanova del Moral, Olatunji Ruwase, Rachel Bawden, Stas Bekman, Angelina McMillan-Major, Iz Beltagy, Huu Nguyen, Lucile Saulnier, Samson Tan, Pedro Ortiz Suarez, Victor Sanh, Hugo Laurençon, Yacine Jernite, Julien Launay, Margaret Mitchell, Colin Raffel, Aaron Gokaslan, Adi Simhi, Aitor Soroa, Alham Fikri Aji, Amit Alfassy, Anna Rogers, Ariel Kreisberg Nitzav, Canwen Xu, Chenghao Mou, Chris Emezue, Christopher Klamm, Colin Leong, Daniel van Strien, David Ifeoluwa Adelani, and et al. 2022. [BLOOM: A 176b-parameter open-access multi-lingual language model](#). *CoRR*, abs/2211.05100.
- Karan Singhal, Shekoofeh Azizi, Tao Tu, S. Sara Mahdavi, Jason Wei, Hyung Won Chung, Nathan Scales, Ajay Kumar Tanwani, Heather Cole-Lewis, Stephen Pfohl, Perry Payne, Martin Seneviratne, Paul Gamble, Chris Kelly, Nathaneal Schärli, Aakanksha Chowdhery, Philip Andrew Mansfield, Blaise Agüera y Arcas, Dale R. Webster, Gregory S. Corrado, Yossi Matias, Katherine Chou, Juraj Gottweis, Nenad Tomasev, Yun Liu, Alvin Rajkumar, Joelle K. Barral, Christopher Semturs, Alan Karthikesalingam, and Vivek Natarajan. 2022. [Large language models encode clinical knowledge](#). *CoRR*, abs/2212.13138.
- Karan Singhal, Tao Tu, Juraj Gottweis, Rory Sayres, Ellery Wulczyn, Le Hou, Kevin Clark, Stephen Pfohl, Heather Cole-Lewis, Darlene Neal, Mike Schaeckermann, Amy Wang, Mohamed Amin, Sami Lachgar, Philip Andrew Mansfield, Sushant Prakash, Bradley Green, Ewa Dominowska, Blaise Agüera y Arcas, Nenad Tomasev, Yun Liu, Renee Wong, Christopher Semturs, S. Sara Mahdavi, Joelle K. Barral, Dale R. Webster, Gregory S. Corrado, Yossi Matias, Shekoofeh Azizi, Alan Karthikesalingam, and Vivek Natarajan. 2023. [Towards expert-level medical question answering with large language models](#). *CoRR*, abs/2305.09617.
- Ankur Sinha and Tanmay Khandait. 2020. [Impact of news on the commodity market: Dataset and results](#). *CoRR*, abs/2009.04202.
- Jun Suzuki, Heiga Zen, and Hideto Kazawa. 2023. [Extracting subset from extensive text for training pre-trained language models](#). *Information Processing & Management*, 60(3):103249.
- Hugo Touvron, Thibaut Lavril, Gautier Izacard, Xavier Martinet, Marie-Anne Lachaux, Timothée Lacroix, Baptiste Rozière, Naman Goyal, Eric Hambro, Faisal Azhar, Aurélien Rodriguez, Armand Joulin, Edouard Grave, and Guillaume Lample. 2023. [Llama: Open and efficient foundation language models](#). *CoRR*, abs/2302.13971.
- Yulia Tsvetkov, Manaal Faruqui, Wang Ling, Brian MacWhinney, and Chris Dyer. 2016. [Learning the curriculum with bayesian optimization for task-specific word representation learning](#). In *Proceedings of the 54th Annual Meeting of the Association for Computational Linguistics, ACL 2016, August 7-12, 2016, Berlin, Germany, Volume 1: Long Papers*. The Association for Computer Linguistics.
- Ben Wang and Aran Komatsuzaki. 2021. [GPT-J-6B: A 6 Billion Parameter Autoregressive Language Model](#). <https://github.com/kingoflolz/mesh-transformer-jax>.
- Chaoyi Wu, Xiaoman Zhang, Ya Zhang, Yanfeng Wang, and Weidi Xie. 2023a. [Pmc-llama: Further finetuning llama on medical papers](#). *CoRR*, abs/2304.14454.

- Shijie Wu, Ozan Irsoy, Steven Lu, Vadim Dabravolski, Mark Dredze, Sebastian Gehrmann, Prabhajan Kambadur, David S. Rosenberg, and Gideon Mann. 2023b. [Bloomberggpt: A large language model for finance](#). *CoRR*, abs/2303.17564.
- Tongtong Wu, Massimo Caccia, Zhuang Li, Yuanfang Li, Guilin Qi, and Gholamreza Haffari. 2022. [Pretrained language model in continual learning: A comparative study](#). In *The Tenth International Conference on Learning Representations, ICLR 2022, Virtual Event, April 25-29, 2022*. OpenReview.net.
- Qianqian Xie, Weiguang Han, Xiao Zhang, Yanzhao Lai, Min Peng, Alejandro Lopez-Lira, and Jimin Huang. 2023a. [PIXIU: A large language model, instruction data and evaluation benchmark for finance](#). *CoRR*, abs/2306.05443.
- Sang Michael Xie, Shibani Santurkar, Tengyu Ma, and Percy S Liang. 2023b. Data selection for language models via importance resampling. *Advances in Neural Information Processing Systems*, 36:34201–34227.
- Yong Xie, Dakuo Wang, Pin-Yu Chen, Jinjun Xiong, Sijia Liu, and Oluwasanmi Koyejo. 2022. [A word is worth a thousand dollars: Adversarial attack on tweets fools stock prediction](#). In *Proceedings of the 2022 Conference of the North American Chapter of the Association for Computational Linguistics: Human Language Technologies*, pages 587–599, Seattle, United States. Association for Computational Linguistics.
- Rowan Zellers, Ari Holtzman, Yonatan Bisk, Ali Farhadi, and Yejin Choi. 2019. Hellaswag: Can a machine really finish your sentence? *arXiv preprint arXiv:1905.07830*.
- Susan Zhang, Stephen Roller, Naman Goyal, Mikel Artetxe, Moya Chen, Shuohui Chen, Christopher Dewan, Mona T. Diab, Xian Li, Xi Victoria Lin, Todor Mihaylov, Myle Ott, Sam Shleifer, Kurt Shuster, Daniel Simig, Punit Singh Koura, Anjali Sridhar, Tianlu Wang, and Luke Zettlemoyer. 2022. [OPT: open pre-trained transformer language models](#). *CoRR*, abs/2205.01068.
- Mingmin Zhao, Shichao Yue, Dina Katabi, Tommi S Jaakkola, and Matt T Bianchi. 2017. Learning sleep stages from radio signals: A conditional adversarial architecture. In *International Conference on Machine Learning*, pages 4100–4109. PMLR.

A Benchmark BloombergGPT’s Performance

As BloombergGPT is evaluated using an in-house data split, and the calculation details of reported metrics may not be identical, direct comparisons of their results with ours are not feasible. To adequately assess the efficacy of continual pre-training, we benchmark BloombergGPT’s performance against the FLARE framework. This involves evaluating OPT-66B and GPT-NeoX-20B’s performance, as obtained from FLARE, and comparing it to the results reported in Wu et al. (2023b). This rigorous benchmarking ensures a fair and comprehensive evaluation, providing valuable insights into the effectiveness of our continual pre-training approach in relation to financial LLMs trained from scratch.

Table 5 reports the comparison results. GPT-NeoX reports similar average task performance under two evaluation frameworks, but its performance on individual tasks varies. For example, the F1 score on FiQA SA obtained by FLARE is 46% higher than BloombergGPT’s evaluation, whereas F1 scores for Headline and NER are lower. Moreover, OPT-66B reports inferior results based on FLARE than BloombergGPT’s evaluation on all of the 4 tasks, and the average task performance is 20% lower. These results suggest that BloombergGPT’s evaluation results are inflated compared with FLARE. The comparison is still inconclusive unless BloombergGPT is benchmarked on FLARE or BloombergGPT’s evaluation configuration is made public.

		FLARE		BloombergGPT	
		GPT-NeoX	OPT-66B	GPT-NeoX	OPT-66B
FPB	F1	46.75	40.00	44.64	48.67
FiQA SA	F1	73.86	37.36	50.59	51.60
Headline	F1	62.62	61.36	73.22	79.41
NER	F1	47.03	52.24	60.98	57.49
Average	F1	57.57	47.74	57.36	59.29

Table 5: Evaluation results obtained on FLARE benchmark versus BloombergGPT (Wu et al., 2023b) for two public models: GPT-NeoX and OPT-66B.

B Intuition behind Domain Task Performance and Data Selection

In this section we formalize the problem and give a mathematical intuition behind why similarity based method works best.

Formulation We first formalize the problem. We are given an unlabeled domain pre-training corpus, \mathcal{U} represented by green region in Figure 1. Next, we can take two scenarios: absence or presence of an unlabeled task corpus. The first scenario of the presence of a task corpus, which can be a single or group of tasks, \mathcal{T} is depicted as the red region in Figure 1. Typically, the task corpus is a subset of the domain corpus, $\mathcal{T} \subset \mathcal{U}$, with $|\mathcal{U}| \gg |\mathcal{T}|$. The goal of data selection is to select a subset, $\mathcal{D} \subset \mathcal{U}$, that is most helpful for pre-training the LLM model. We also assume that the selected domain corpus subset is much larger than the task corpus, $|\mathcal{D}| \gg |\mathcal{T}|$, as is a typical case. The data selection problem can be formally defined as selection of optimal $\mathcal{D}^* \subset \mathcal{U}$:

$$\mathcal{D}^* = \operatorname{argmin}_{\mathcal{D}^* \subset \mathcal{U}} \mathbb{E}_{x \in \mathcal{T}} [\mathcal{L}_t(y|f(\theta^*; x))] \quad (1)$$

where, $f(\theta; \cdot)$ is a LLM with parameters θ , y is the task output, x is an input in target task data \mathcal{T} , and \mathcal{L}_t is the target task loss or metric. θ^* is computed on pre-training task with $\mathcal{L}_{\text{pre-train}}$ as the pre-training loss, and x_u as the unlabeled sample in \mathcal{D} :

$$\theta^* = \operatorname{argmin}_{\theta} \mathbb{E}_{x_u \in \mathcal{D}} [\mathcal{L}_{\text{pre-train}}(f(\theta; x_u))] \quad (2)$$

Our domain-adaptive continual pre-training can be viewed from the lens of unsupervised domain adaptation (Ganin et al., 2016). Our source data is the large unsupervised domain corpus, while the target data is the target task data. With pre-training, we do not have control over the alignment with task training data itself; our idea is that by aligning with the domain during pre-training, we could align the LLM with the task. This intuition is backed by evidence of LLM pre-training helping the performance over open domain tasks. We use the generalization bound from (Ganin et al., 2016; Ben-David et al., 2010) since our problem is similar to unsupervised domain adaptation. Consider a hypothesis space \mathcal{H}_p with $f \in \mathcal{H}_p$; generalization errors on source \mathcal{D} and task data

Question: What is a SPAC?

Pythia6.9B: Spac is an acronym for Space. It is defined as either (1) above, just beneath, below, above, or through a port in the body of a planet, Moon, or other heavenly body; or (2) beyond a star’s sphere of influence, usually in interplanetary space or interstellar space; also, (3) outside the limits of the Milky Way Galaxy.

FinPythia-6.9B: A SPAC is a type of merger and acquisition vehicle that is used to raise money from investors, use that money to identify a company that could be valuable to an interested party, then merge with the company and take it public. The use of the SPAC is to give investors a piece of the upside in the acquired company and allows the company to issue shares that may give investors a piece of the upside of the company as well.

Question: Who is Cathie Wood?

Pythia-6.9B: Cathie Wood is the founder of All Things Organic, an organic marketing company that she founded in 2000. In addition to being an organic marketer, Cathie is also a Certified Coach, foodie, cook, a past lover of yoga, a certified teacher, mother and wife to three gorgeous children.

FinPythia-6.9B: Cathie Wood is an American investor and advisor, the founder and chief executive officer of Ark Investment Management.

Question: How do you like Fed’s latest policy to fight inflation?

Pythia6.9B: I like Fed’s latest policy to fight inflation, which was reported by Tyler. Fed’s latest policy was reported in a meeting on September 12 and it was named as SOMO, which stood for Standardized Open Market Operations. According to the policy, the U.S. central bank could buy \$40 billion worth of financial instruments if the price of the instruments reach 6 percent.

FinPythia-6.9B: There is a big confusion about Fed’s new policy to fight inflation. They are following a new policy from September 2022 called the fastest quarter-percentage point rate hikes in two decades to fight the ”costly” inflation which is the 8.5 percent rate of increase in food and energy prices that may aggravate inflation and lead to recession in the near future.

Question: What is the difference between bond and stock in terms of risk profile?

Pythia-6.9B: Stock is less risky (you can liquidate your shares anytime) but bond is more risky (you can’t liquidate).

FinPythia-6.9B: When you buy a bond, you receive a set of fixed payments from the issuer at a regular interval over a fixed term. You take on the full risk of the coupon payments not being made, so a bond is always considered to be a lower risk debt instrument than a stock. However, a stock is a more liquid investment than a bond. When buying a stock, you are buying shares in the company that the bond represents and you hold on to the stock until you want to cash out, and it can be used as collateral to borrow money.

Table 6: Generation examples from Pythia-6.9B and FinPythia-6.9B. We observe FinPythia’s updated financial events knowledge post 2021, providing factual answers with reasoning as shown in the last example.

\mathcal{T} as $\epsilon_{\mathcal{D}}$ and $\epsilon_{\mathcal{T}}$, respectively. The generalization bound can be given:

$$\epsilon_{\mathcal{T}}(f) \leq \epsilon_{\mathcal{D}}(f) + \frac{1}{2}d_{\mathcal{H}_p\Delta\mathcal{H}_p}(\mathcal{D}, \mathcal{T}) + \mathcal{C} \quad (3)$$

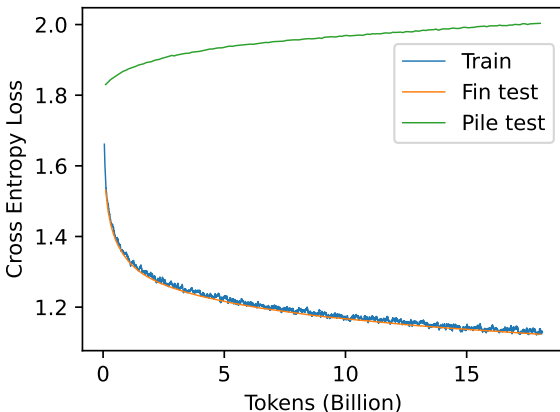


Figure 3: Training loss of FinPythia-6.9B. FinPythia-6.9B achieves significant loss drop in financial corpus at mild expense of Pile loss with vanilla pre-training (DACP).

where, $d_{\mathcal{H}_p\Delta\mathcal{H}_p}$ is distribution discrepancy distance between \mathcal{D} and \mathcal{T} bounded by (Ganin et al., 2016):

$$d_{\mathcal{H}_p\Delta\mathcal{H}_p}(\mathcal{D}, \mathcal{T}) \leq 2 \sup_{\alpha(h) \in \mathcal{H}_d} [\alpha(h) - 1] \quad (4)$$

where, $\alpha(h)$ is optimal domain classifier and \mathcal{H}_d is the hypothesis space of domain classifier. (Zhao et al., 2017) prove that optimal state of minimum discrepancy distance $d_{\mathcal{H}_p\Delta\mathcal{H}_p}(\mathcal{D}, \mathcal{T})$ is when the domain classifier has random predictions achieving a state of highest entropy. We argue that it is achieved when the representations for samples in two domains are most similar, leading to a random domain classifier that is unable to distinguish between the two dataset distributions. Motivated by this intuition, we can use a strategy based on selecting samples with the most similar representations to our task dataset \mathcal{T} . We use the embedding

similarity as a proxy for dataset similarity as getting the optimal representation is challenging in unpractical in the case of large corpus.

C Qualitative Evaluation

Qualitative examples generated by Pythia-6.9B and FinPythia-6.9B are presented in Table 6. Upon examination, we observe that FinPythia-6.9B exhibits a superior ability to generate more relevant and detailed responses for finance-related questions. For example, in first example, while Pythia exhibits no knowledge of very finance domain specific term “SPAC” and starts hallucinating, FinPythia gives a correct definition of SPAC. Same with the other three examples. These findings suggest that the continual pre-training helps FinPythia-6.9B acquire in-domain knowledge, lacking in Pythia.

D Train and Test Loss of Continual Pre-training Methods

To monitor the pre-training process, we randomly sample 0.1% of our financial corpus as a financial test dataset. The model is also evaluated on the Pile test dataset. The loss trajectory for FinPythia-6.9B is reported in Figure 3. The training loss in the figure is smoothed using a moving average of 50 optimization steps. We observe a sharp decrease in Financial test (Fin test) loss during the early stage of continual pre-training, and the progress gradually becomes saturated, similar to the loss trajectory of training from scratch (Wu et al., 2023b; Touvron et al., 2023). The loss log suggests that domain-adaptive continual pre-training succeeds in adopting Pythia to the financial

domains at the expense of a mild increase in Pile loss (Pile test).

We show the plots of Finance domain loss (Fin Test) and open domain loss (Pile Loss) for our efficient DACP methods in Figure 5. ETS-DACP-com (Hard sampling) has the lowest loss for Fin Test loss as it uses both task knowledge and also uses high entropy/perplexity samples in the the larger financial pile. This selection difference is illustrated in Figure 4. All methods have similar Fin Test loss for Soft sampling as we sample entire financial corpus space for sampling, allowing the model to see the entire space of corpus (green dots in Figure 7) mimicking Figure 4b. This effect of sampling is further seen in the Hard Sampling case; ETS-DACP limited to samples in the blue shaded region in Figure 4a, has a higher fin test loss as well as Pile test loss, as it is confined to the task distribution unlike task agnostic methods which see the wider financial corpus distribution as shown in Figure 4b. ETA-DACP-ent and ETA-DACP-ppl show similar loss curves as expected as they both sample from the entire financial corpus. ETS-DACP-com has a higher loss than these but lower loss than ETS-DACP, as it is a mixture of these three sampling techniques.

ETS-DACP has the highest loss for open domain Pile loss. However, we did not observe any significant degradation of performance on open domain tasks with ETS-DACP. Surprisingly, there is a tight correlation between losses of ETS-DACP-ent and ETS-DACP-ppl, while ETS-DACP-ppl performs consistently and considerably worse than ETS-DACP-ent on our tasks. These observations suggest that there

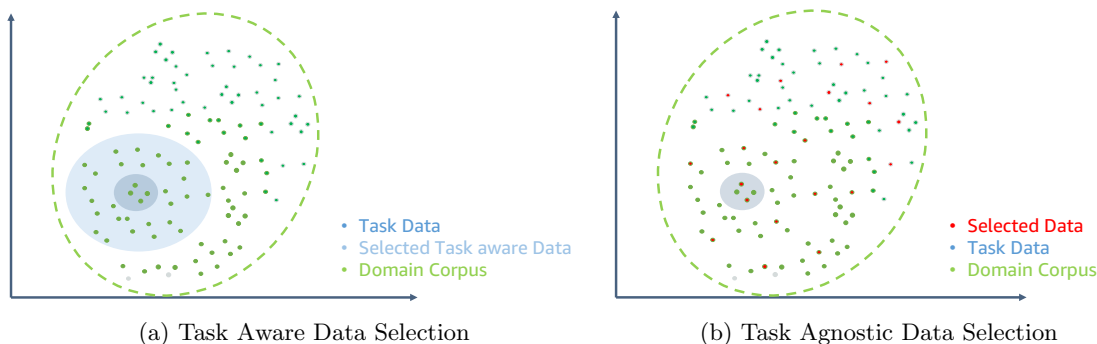


Figure 4: Pictorial depiction of Task Aware Data Selection (left) versus Task Agnostic Data Selection (Right). While task aware data selection confines the model to only see data in the regions similar to task data (or a sub-domain), task agnostic allows the model to see the wider distribution of domain data.

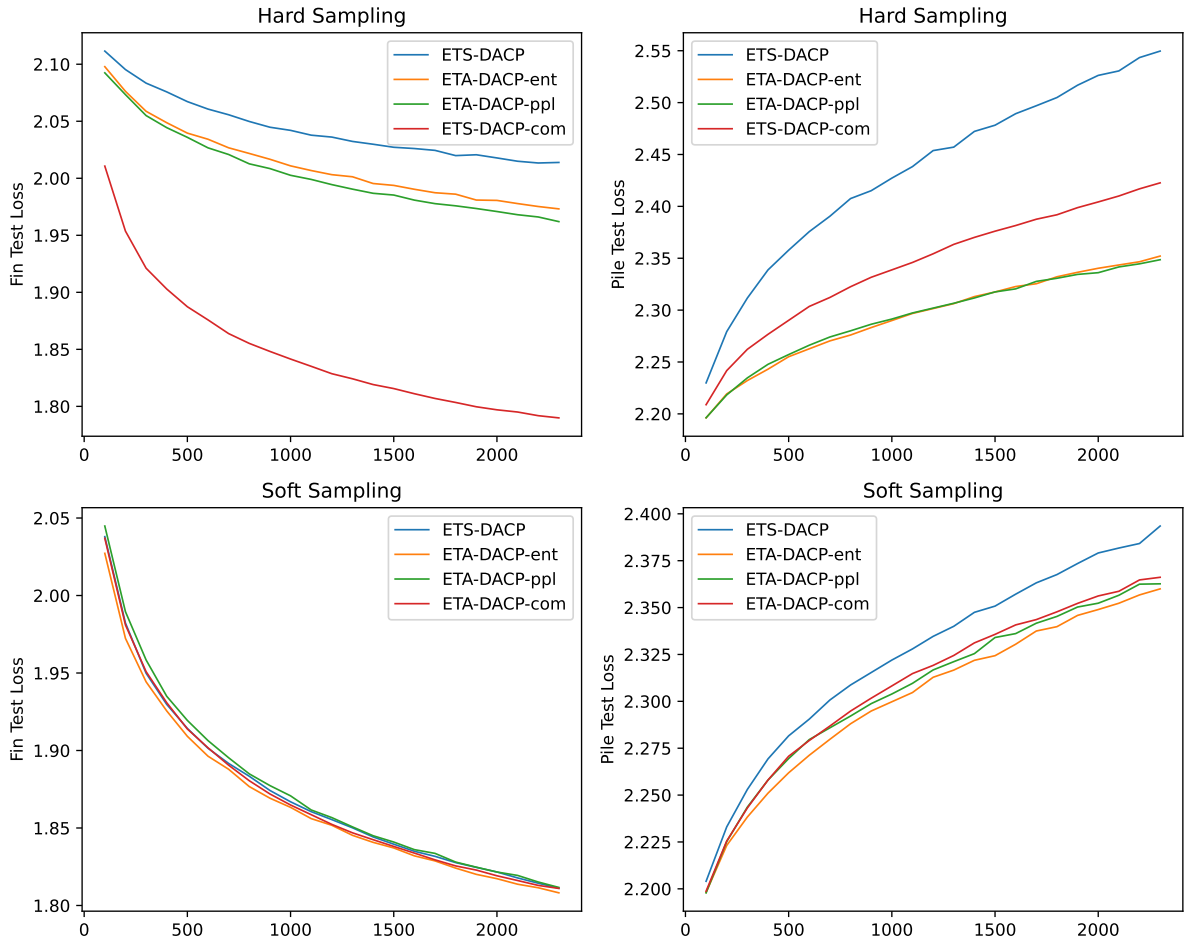


Figure 5: Loss curves for in domain loss (Fin Test loss) on left and general domain loss (Pile loss) on right for our Efficient DACP class of methods. X-axis is number of epochs ran for 10% of domain corpus.

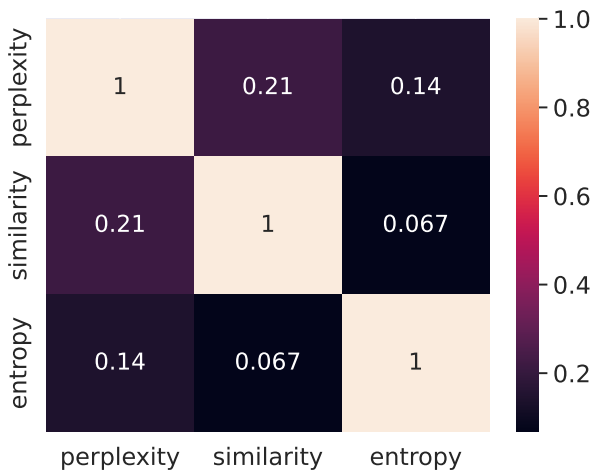


Figure 6: Spearman's rank correlation heatmap between perplexity, similarity, and entropy measures.

is no good correlation between actual our task performance and loss curves. Using validation/test loss with unlabeled data is not a good

proxy for task performance, atleast in this domain. This is supported by (Liu et al., 2023)'s observations on low correlation between task performance and pre-training loss.

E Perplexity, Similarity, and Diversity

In this section, we present an in-depth analysis of the distribution of perplexity, similarity, and diversity within our financial corpus. Our findings reveal that all three metrics display a highly skewed distribution. Specifically, as illustrated in the top row of Figure 7, the similarity metric demonstrates a two-modal pattern, potentially attributable to the presence of two distinct sources within our financial corpus.

Figure 6 shows the Spearman's rank correlation of all three metrics. We see that the three metrics exhibit low correlation. This suggests that subsets of data we selected by ranking across these three metrics do not have a high

degree of overlap. This inspired us to create the ETS-DACP-com method, which combines the three metrics together to balance the three different dimensions. Figure 8 shows the quantile distribution of three metrics for selected subsets for each of the efficient DACP methods with hard sampling.

F ETS-DACP-com vs ETS-DACP

ETS-DACP-com effectively strikes a balance between constructing a domain-specific LLM and a task-specific LLM. To demonstrate its efficacy, we utilize the average quantile of similarity, knowledge novelty, and diversity as the sampling weights. By applying these weights,

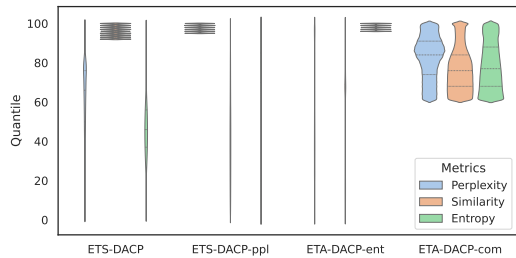


Figure 8: Average sample quantile of subsets of financial corpus used in ETS-DACP-com and ETS-DACP.

we perform weighted sampling, selecting 10% and 20% of the financial corpus without replacement to construct the training data.

The average sample quantile for various subsets of the financial corpus is illustrated in Figure 8. We claim that using a simple average of quantiles for the three metrics achieves a good balance among the three dimensions—the average quantile for the three dimensions lies in a similar ballpark for each subset. In contrast, the subset for ETS-DACP exhibits higher perplexity and lower or middle entropy, suggesting that unlabeled task data contains new knowledge but is less diverse. For ETA-DACP-ppl and ETA-DACP-ent, the samples are uniform across the other two dimensions.

G Financial Dataset Curation

Common financial corpus includes SEC filings (Maia et al., 2018), conference call transcripts (Qin and Yang, 2019), analyst reports, financial tweets (Xie et al., 2022), financial news (Duan et al., 2018), etc. We use financial news and filings from Financial News CommonCrawl and SEC filings to curate our financial domain corpus. The procedure is detailed as follows.

Financial News CommonCrawl [13.2B words, 83.5%] We curate an English finan-

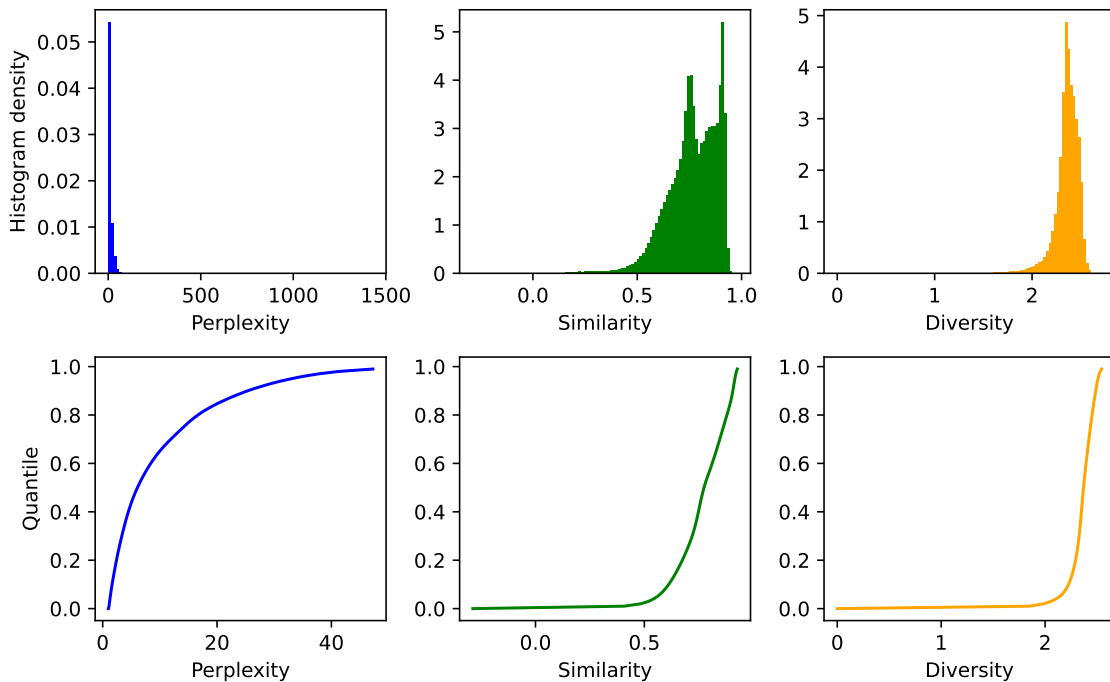


Figure 7: Distribution of perplexity, similarity and diversity.

cial news dataset by pre-processing the publicly available News CommonCrawl dumps hosted on AWS S3² spanning from 2016 to 2022. To identify financial news articles from the vast collection of News CommonCrawl dumps, we employ two filtering mechanisms: the domain filter and the URL keyword filter. Firstly, we establish a comprehensive portfolio of web domains corresponding to reputable news outlets that predominantly focus on financial, economic, and business news, such as CNBC. We retain news articles specifically sourced from these financial news domains, which constitute a substantial portion of our financial corpus.

Secondly, to capture financial articles from general news outlets, we observe that many of them designate dedicated sections or subdomains for business, economy, or finance news, like Fox Business. To effectively identify these financial articles, we implement a simple yet effective keyword-based approach that targets financial sections and subdomains within general news outlets. The filtering processes ensure the selection of a financial corpus appropriate for our continual pre-training in the financial domain.

financial corpus, we include 10-K filings from the period spanning 1993 to 2022. To ensure data accuracy and consistency, these filings are parsed and pre-processed using the package detailed in Loukas et al. (2021). Furthermore, we optimize the quality of our corpus by eliminating report sections containing less than 20 words, to remove spurious examples.

List of Domains used to Filter Financial News We use the following keywords to identify subdomains and urls: economy, market, finance, money, wealth, invest, business, industry.

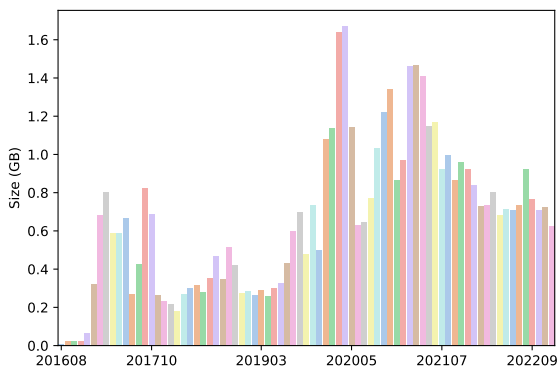


Figure 9: Financial news size by month

SEC Filing [3.3B words, 16.5%] Public companies in the United States are legally required to submit their financial statements on a regular basis. The Securities and Exchange Commission (SEC) facilitates public access to these filings through the Electronic Data Gathering, Analysis, and Retrieval (EDGAR) System, which has been available since 1993. On average, this system accommodates approximately 40,000 new files per year. To enrich our

²s3://commoncrawl