

Learning Parse and Translation Decisions From Examples With Rich Context

Ulf Hermjakob and Raymond J. Mooney

Dept. of Computer Sciences
University of Texas at Austin

Austin, TX 78712, USA

ulf@cs.utexas.edu mooney@cs.utexas.edu

Abstract

We present a knowledge and context-based system for parsing and translating natural language and evaluate it on sentences from the Wall Street Journal. Applying machine learning techniques, the system uses parse action examples acquired under supervision to generate a deterministic shift-reduce parser in the form of a decision structure. It relies heavily on context, as encoded in features which describe the morphological, syntactic, semantic and other aspects of a given parse state.

1 Introduction

The parsing of unrestricted text, with its enormous lexical and structural ambiguity, still poses a great challenge in natural language processing. The traditional approach of trying to master the complexity of parse grammars with hand-coded rules turned out to be much more difficult than expected, if not impossible. Newer statistical approaches with often only very limited context sensitivity seem to have hit a performance ceiling even when trained on very large corpora.

To cope with the complexity of unrestricted text, parse rules in any kind of formalism will have to consider a complex context with many different morphological, syntactic or semantic features. This can present a significant problem, because even linguistically trained natural language developers have great difficulties writing and even more so extending explicit parse grammars covering a wide range of natural language. On the other hand it is much easier for humans to decide how *specific* sentences should be analyzed.

We therefore propose an approach to parsing based on learning from examples with a very strong emphasis on context, integrating morphological,

syntactic, semantic and other aspects relevant to making good parse decisions, thereby also allowing the parsing to be deterministic. Applying machine learning techniques, the system uses parse action examples acquired under supervision to generate a deterministic shift-reduce type parser in the form of a decision structure. The generated parser transforms input sentences into an integrated phrase-structure and case-frame tree, powerful enough to be fed into a transfer and a generation module to complete the full process of machine translation.

Balanced by rich context and some background knowledge, our corpus based approach relieves the NL-developer from the hard if not impossible task of writing explicit grammar rules and keeps grammar coverage increases very manageable. Compared with standard statistical methods, our system relies on deeper analysis and more supervision, but radically fewer examples.

2 Basic Parsing Paradigm

As the basic mechanism for parsing text into a shallow semantic representation, we choose a shift-reduce type parser (Marcus, 1980). It breaks parsing into an ordered sequence of small and manageable parse actions such as shift and reduce. This ordered 'left-to-right' parsing is much closer to how humans parse a sentence than, for example, chart oriented parsers; it allows a very transparent control structure and makes the parsing process relatively intuitive for humans. This is very important, because during the training phase, the system is guided by a human supervisor for whom the flow of control needs to be as transparent and intuitive as possible.

The parsing does not have separate phases for part-of-speech selection and syntactic and semantic processing, but rather integrates all of them into a single parsing phase. Since the system has all morphological, syntactic and semantic context information available at all times, the system can make well-

based decisions very early, allowing a single path, i.e. deterministic parse, which eliminates wasting computation on 'dead end' alternatives.

Before the parsing itself starts, the input string is segmented into a list of words incl. punctuation marks, which then are sent through a morphological analyzer that, using a lexicon¹, produces primitive frames for the segmented words. A word gets a primitive frame for each possible part of speech. (Morphological ambiguity is captured within a frame.)

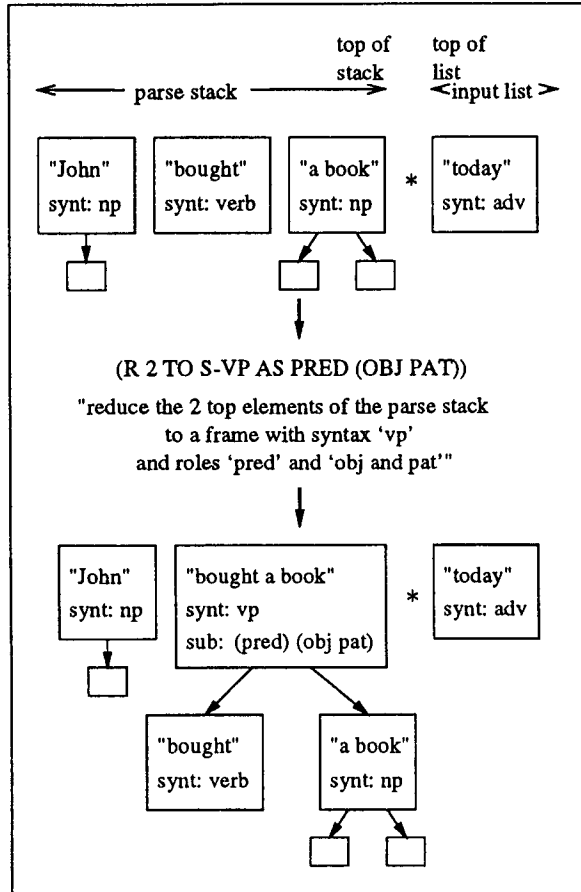


Figure 1: Example of a parse action (simplified); boxes represent frames

The central data structure for the parser consists of a parse stack and an input list. The parse stack and the input list contain trees of frames of words or phrases. Core slots of frames are surface and lexical form, syntactic and semantic category, subframes with syntactic and semantic roles, and form restric-

¹The lexicon provides part-of-speech information and links words to concepts, as used in the KB (see next section). Additional information includes irregular forms and grammatical gender etc. (in the German lexicon).

```

"John bought a new computer science book
today.":
  synt/sem: S-SNT/I-EV-BUY
  forms: (3rd_person sing past_tense)
  lex: "buy"
  subs:
    (SUBJ AGENT) "John":
      synt/sem: S-NP/I-EN-JOHN
      (PRED) "John"
      synt/sem: S-NOUN/I-EN-JOHN
    (PRED) "bought":
      synt/sem: S-TR-VERB/I-EV-BUY
      (OBJ THEME) "a new computer science book":
        synt/sem: S-NP/I-EN-BOOK
        (DET) "a"
        (MOD) "new"
        (PRED) "computer science book"
          (MOD) "computer science"
            (MOD) "computer"
              (PRED) "science"
                (PRED) "book"
          (TIME) "today":
            synt/sem: S-ADV/C-AT-TIME
            (PRED) "today"
            synt/sem: S-ADV/I-EADV-TODAY
        (DUMMY) ".":
          synt: D-PERIOD
  
```

Figure 2: Example of a parse tree (simplified).

tions such as number, person, and tense. Optional slots include special information like the numerical value of number words.

Initially, the parse stack is empty and the input list contains the primitive frames produced by the morphological analyzer. After initialization, the *deterministic parser* applies a sequence of *parse actions* to the parse structure. The most frequent parse actions are *shift*, which shifts a frame from the input list onto the parse stack or backwards, and *reduce*, which combines one or several frames on the parse stack into one new frame. The frames to be combined are typically, but not necessarily, next to each other at the top of the stack. As shown in figure 1, the action

(R 2 TO VP AS PRED (OBJ PAT))

for example reduces the two top frames of the stack into a new frame that is marked as a verb phrase and contains the next-to-the-top frame as its predicate (or head) and the top frame of the stack as its object and patient. Other parse actions include *add-into*, which adds frames arbitrarily deep into an existing frame tree, *mark*, which can mark any slot of any frame with any value, and operations to introduce empty categories (i.e. traces and 'PRO', as in "She_i wanted PRO_i to win."). Parse actions can

have numerous arguments, making the *parse action language* very powerful.

The parse action sequences needed for training the system are acquired interactively. For each training sentence, the system and the supervisor parse the sentence step by step, with the supervisor entering the next parse action, e.g. (R 2 TO VP AS PRED (OBJ PAT)), and the system executing it, repeating this sequence until the sentence is fully parsed. At least for the very first sentence, the supervisor actually has to type in the entire parse action sequence. With a growing number of parse action examples available, the system, as described below in more detail, can be trained using those previous examples. In such a partially trained system, the parse actions are then proposed by the system using a parse decision structure which "classifies" the current context. The proper classification is the specific action or sequence of actions that (the system believes) should be performed next. During further training, the supervisor then enters parse action commands by either confirming what the system proposes or overruling it by providing the proper action. As the corpus of parse examples grows and the system is trained on more and more data, the system becomes more refined, so that the supervisor has to overrule the system with decreasing frequency. The sequence of correct parse actions for a sentence is then recorded in a log file.

3 Features

To make good parse decisions, a wide range of features at various degrees of abstraction have to be considered. To express such a wide range of features, we defined a *feature language*. Parse features can be thought of as functions that map from partially parsed sentences to a value. Applied to the target parse state of figure 1, the feature (*SYNT OF OBJ OF -1 AT S-SYNT-ELEM*), for example, designates the general syntactic class of the object of the first frame of the parse stack², in our example *np*³. So, features do not a priori operate on words or phrases, but only do so if their description references such words or phrases, as in our example through the path 'OBJ OF -1'.

Given a particular parse state and a feature, the system can interpret the feature and compute its

²*S-SYNT-ELEM* designates the top syntactic level; since -1 is *negative*, the feature refers to the 1st frame of the *parse stack*. Note that the top of stack is at the right end for the parse stack.

³If a feature is not defined in a specific parse state, the feature interpreter assigns the special value *unavailable*.

value for the given parse state, often using additional background knowledge such as

1. A *knowledge base* (KB), which currently consists of a directed acyclic graph of 4356 mostly semantic and syntactic concepts connected by 4518 *is-a* links, e.g. "*book_{noun-concept} is-a tangible - object_{noun-concept}*". Most concepts representing words are at a fairly shallow level of the KB, e.g. under 'tangible object', 'abstract', 'process verb', or 'adjective', with more depth used only in concept areas more relevant for making parse and translation decisions, such as temporal, spatial and animate concepts.⁴
2. A *subcategorization table* that describes the syntactic and semantic role structures for verbs, with currently 242 entries.

The following representative examples, for easier understanding rendered in English and not in feature language syntax, further illustrate the expressiveness of the feature language:

- the general syntactic class of *frame₋₃* (the third element of the parse stack): e.g. verb, adj, np,
- whether or not the adverbial alternative of *frame₁* (the top element of the input list) is an adjectival degree adverb,
- the specific finite tense of *frame₋₁*, e.g. present tense,
- whether or not *frame₋₁* contains an object,
- the semantic role of *frame₋₁* with respect to *frame₋₂*: e.g. agent, time; this involves pattern matching with corresponding entries in the verb subcategorization table,
- whether or not *frame₋₂* and *frame₋₁* satisfy subject-verb agreement.

Features can in principal refer to any one or several elements on the parse stack or input list, and any of their subelements, at any depth. Since the currently 205 features are supposed to bear some linguistic relevance, none of them are unjustifiably remote from the current focus of a parse state.

The feature collection is basically independent from the supervised parse action acquisition. Before learning a decision structure for the first time, the supervisor has to provide an initial set of features

⁴Supported by acquisition tools, word/concept pairs are typically entered into the lexicon and the KB at the same time, typically requiring less than a minute per word or group of closely related words.

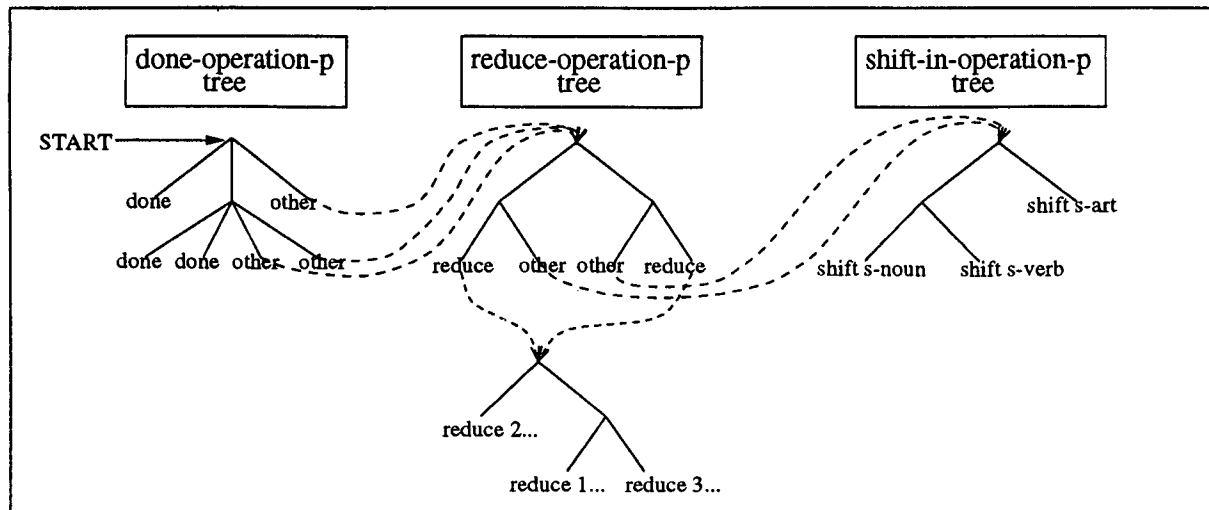


Figure 3: Example of a hybrid decision structure

that can be considered obviously relevant. Particularly during the early development of our system, this set was increased whenever parse examples had identical values for all current features but nevertheless demanded different parse actions. Given a specific conflict pair of partially parsed sentences, the supervisor would add a new relevant feature that discriminates the two examples. We expect our feature set to grow to eventually about 300 features when scaling up further within the Wall Street Journal domain, and quite possibly to a higher number when expanding into new domains. However, such feature set additions require fairly little supervisor effort.

Given (1) a log file with the correct parse action sequence of training sentences as acquired under supervision and (2) a set of features, the system revisits the training sentences and computes values for all features at each parse step. Together with the recorded parse actions these feature vectors form *parse examples* that serve as input to the learning unit. Whenever the feature set is modified, this step must be repeated, but this is unproblematic, because this process is both fully automatic and fast.

4 Learning Decision Structures

Traditional statistical techniques also use features, but often have to sharply limit their number (for some trigram approaches to three fairly simple features) to avoid the loss of statistical significance.

In parsing, only a very small number of features are crucial over a wide range of examples, while most features are critical in only a few examples, being used to 'fine-tune' the decision structure for

special cases. So in order to overcome the antagonism between the importance of having a large number of features and the need to control the number of examples required for learning, particularly when acquiring parse action sequence under supervision, we choose a decision-tree based learning algorithm, which recursively selects the most discriminating feature of the corresponding subset of training examples, eventually ignoring all locally irrelevant features, thereby tailoring the size of the final decision structure to the complexity of the training data.

While parse actions might be complex for the action interpreter, they are atomic with respect to the decision structure learner; e.g. "(R 2 TO VP AS PRED (OBJ PAT))" would be such an atomic *classification*. A set of *parse examples*, as already described in the previous section, is then fed into an ID3-based learning routine that generates a decision structure, which can then 'classify' any given parse state by proposing what parse action to perform next.

We extended the standard ID3 model (Quinlan, 1986) to more general hybrid decision structures. In our tests, the best performing structure was a decision list (Rivest, 1987) of hierarchical decision trees, whose simplified basic structure is illustrated in figure 3. Note that in the 'reduce operation tree', the system first decides whether or not to perform a reduction before deciding on a specific reduction. Using our knowledge of similarity of parse actions and the exceptionality vs. generality of parse action groups, we can provide an overhead structure that helps prevent data fragmentation.

5 Transfer and Generation

The output tree generated by the parser can be used for translation. A transfer module recursively maps the source language parse tree to an equivalent tree in the target language, reusing the methods developed for parsing with only minor adaptations. The main purpose of learning here is to resolve translation ambiguities, which arise for example when translating the English “to know” to German (*wissen/kennen*) or Spanish (*saber/conocer*).

Besides word pair entries, the *bilingual dictionary* also contains pairs of phrases and expressions in a format closely resembling traditional (paper) dictionaries, e.g. “to comment on SOMETHING.1”/“sich zu ETWAS_DAT.1 äußern”. Even if a complex translation pair does not bridge a structural mismatch, it can make a valuable contribution to disambiguation. Consider for example the term “interest rate”. Both element nouns are highly ambiguous with respect to German, but the English *compound* conclusively maps to the German compound “Zinssatz”. We believe that an extensive collection of complex translation pairs in the bilingual dictionary is critical for translation quality and we are confident that its acquisition can be at least partially automated by using techniques like those described in (Smadja et al., 1996). Complex translation entries are preprocessed using the same parser as for normal text. During the transfer process, the resulting parse tree pairs are then accessed using pattern matching.

The generation module orders the components of phrases, adds appropriate punctuation, and propagates morphologically relevant information in order to compute the proper form of surface words in the target language.

6 Wall Street Journal Experiments

We now present intermediate results on training and testing a prototype implementation of the system with sentences from the Wall Street Journal, a prominent corpus of ‘real’ text, as collected on the ACL-CD.

In order to limit the size of the required lexicon, we work on a reduced corpus of 105,356 sentences, a tenth of the full corpus, that includes all those sentences that are fully covered by the 3000 most frequently occurring words (ignoring numbers etc.) in the entire corpus. The first 272 sentences used in this experiment vary in length from 4 to 45 words, averaging at 17.1 words and 43.5 parse actions per sentence. One of these sentence is “*Canadian manufacturers’ new orders fell to \$20.80 billion (Cana-*

Tr. snt.	16	32	64	128	256
Prec.	85.1%	86.6%	87.7%	90.4%	92.7%
Recall	82.8%	85.3%	87.7%	89.9%	92.8%
L. pr.	77.2%	80.4%	82.5%	86.6%	89.8%
L. rec.	75.0%	77.7%	81.6%	85.3%	89.6%
Tagging	96.6%	96.5%	97.1%	97.5%	98.4%
Cr/snt	2.5	2.1	1.9	1.3	1.0
0 cr	27.6%	35.3%	35.7%	50.4%	56.3%
≤ 1 cr	44.1%	50.7%	54.8%	68.4%	73.5%
≤ 2 cr	61.4%	65.1%	66.9%	80.9%	84.9%
≤ 3 cr	72.4%	77.2%	79.4%	87.1%	93.0%
≤ 4 cr	84.9%	86.4%	89.7%	93.0%	94.9%
Ops	79.1%	82.9%	86.8%	89.1%	91.7%
OpSeq	1.8%	4.4%	5.9%	10.7%	16.5%
Str&L	5.5%	8.8%	10.3%	18.8%	26.8%
Loops	13	6	0	1	1

Table 1: Evaluation results with varying number of training sentences; with all 205 features and hybrid decision structure; Train. = number of training sentences; pr/prec. = precision; rec. = recall; l. = labeled; Tagging = tagging accuracy; Cr/snt = crossings per sentence; Ops = correct operations; OpSeq = Operation Sequence

labeled precision

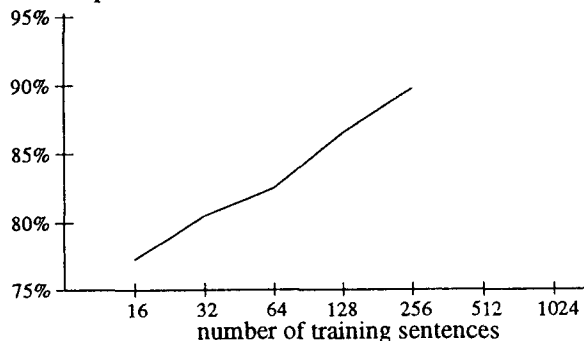


Figure 4: Learning curve for labeled precision in table 1.

dian) in January, down 4% from December’s \$21.67 billion billion on a seasonally adjusted basis, Statistics Canada, a federal agency, said.”

For our parsing test series, we use 17-fold cross-validation. The corpus of 272 sentences that currently have parse action logs associated with them is divided into 17 blocks of 16 sentences each. The 17 blocks are then consecutively used for testing. For each of the 17 sub-tests, a varying number of sentences from the *other* blocks is used for training the parse decision structure, so that within a sub-test, none of the training sentences are ever used as a test sentence. The results of the 17 sub-tests of each series are then averaged.

Features	6	25	50	100	205
Prec.	88.0%	88.7%	90.8%	91.7%	92.7%
Recall	87.3%	88.7%	90.8%	91.7%	92.8%
L. pr.	79.8%	86.7%	87.2%	88.6%	89.8%
L. rec.	81.5%	84.1%	86.9%	88.1%	89.6%
Tagging	97.6%	97.9%	98.1%	98.2%	98.4%
Cr/snt	1.8	1.7	1.3	1.1	1.0
0 cr	39.0%	43.4%	50.4%	54.0%	56.3%
≤ 1 cr	57.4%	59.6%	70.6%	72.1%	73.5%
≤ 2 cr	72.1%	73.9%	80.5%	84.2%	84.9%
≤ 3 cr	82.7%	84.9%	88.6%	92.3%	93.0%
≤ 4 cr	89.0%	89.7%	93.8%	94.5%	94.9%
Ops	80.6%	81.9%	88.9%	90.7%	91.7%
OpSeq	2.6%	1.5%	8.8%	13.6%	16.5%
Str&L	8.8%	9.2%	15.1%	23.5%	26.8%
Loops	8	2	2	2	1

Table 2: Evaluation results with varying number of features; with 256 training sentences

Precision (*pr.*):

$$\frac{\text{number of correct constituents in system parse}}{\text{number of constituents in system parse}}$$

Recall (*rec.*):

$$\frac{\text{number of correct constituents in system parse}}{\text{number of constituents in logged parse}}$$

Crossing brackets (*cr*): number of constituents which violate constituent boundaries with a constituent in the logged parse.

Labeled (*l.*) precision/recall measures not only structural correctness, but also the correctness of the syntactic label. **Correct operations (*Ops*)** measures the number of correct operations during a parse that is continuously corrected based on the logged sequence. The *correct operations* ratio is important for example acquisition, because it describes the percentage of parse actions that the supervisor can confirm by just hitting the return key. A sentence has a correct **operating sequence (*OpSeq*)**, if the system fully predicts the logged parse action sequence, and a correct **structure and labeling (*Str&L*)**, if the structure and syntactic labeling of the final system parse of a sentence is 100% correct, regardless of the operations leading to it.

The current set of 205 features was sufficient to always discriminate examples with different parse actions, resulting in a 100% accuracy on sentences already seen during training. While that percentage is certainly less important than the accuracy figures for unseen sentences, it nevertheless represents an important upper ceiling.

Many of the mistakes are due to encountering con-

Type of decision structure	plain list	hier. list	plain tree	hybrid tree
Precision	87.8%	91.0%	87.6%	92.7%
Recall	89.9%	88.2%	89.7%	92.8%
Lab. precision	28.6%	87.4%	38.5%	89.8%
Lab. recall	86.1%	84.7%	85.6%	89.6%
Tagging acc.	97.9%	96.0%	97.9%	98.4%
Crossings/snt	1.2	1.3	1.3	1.0
0 crossings	55.2%	52.9%	51.5%	56.3%
≤ 1 crossings	72.8%	71.0%	65.8%	73.5%
≤ 2 crossings	82.7%	82.7%	81.6%	84.9%
≤ 3 crossings	89.0%	89.0%	90.1%	93.0%
≤ 4 crossings	93.4%	93.4%	93.4%	94.9%
Ops	86.5%	90.3%	90.2%	91.7%
OpSeq	12.9%	11.8%	13.6%	16.5%
Str&L	22.4%	22.8%	21.7%	26.8%
Endless loops	26	23	32	1

Table 3: Evaluation results with varying types of decision structures; with 256 training sentences and 205 features

structions that just have not been seen before at all, typically causing several erroneous parse decisions in a row. This observation further supports our expectation, based on the results shown in table 1 and figure 4, that with more training sentences, the testing accuracy for unseen sentences will still rise significantly.

Table 2 shows the impact of reducing the feature set to a set of *N* core features. While the loss of a few specialized features will not cause a major degradation, the relatively high number of features used in our system finds a clear justification when evaluating compound test characteristics, such as the number of structurally completely correct sentences. When 25 or fewer features are used, all of them are syntactic. Therefore the 25 feature test is a relatively good indicator for the contribution of the semantic knowledge base.

In another test, we deleted all 10 features relating to the subcategorization table and found that the only metrics with degrading values were those measuring semantic role assignment; in particular, none of the precision, recall and crossing bracket values changed significantly. This suggests that, at least in the presence of other semantic features, the subcategorization table does not play as critical a role in resolving structural ambiguity as might have been expected.

Table 3 compares four different machine learning variants: plain decision lists, hierarchical decision

lists, plain decision trees and a hybrid structure, namely a decision list of hierarchical decision trees, as sketched in figure 3. The results show that extensions to the basic decision tree model can significantly improve learning results.

System	Syntax	Semantics
Human translation	1.18	1.41
CONTEX on correct parse	2.20	2.19
CONTEX (full translation)	2.36	2.38
Logos	2.57	3.24
SYSTRAN	2.68	3.35
Globalink	3.30	3.83

Table 4: Translation evaluation results (best possible = 1.00, worst possible = 6.00)

Table 4 summarizes the evaluation results of translating 32 randomly selected sentences from our Wall Street Journal corpus from English to German. Besides our system, CONTEX, we tested three commercial systems, Logos, SYSTRAN, and Globalink. In order to better assess the contribution of the parser, we also added a version that let our system start with the correct parse, effectively just testing the transfer and generation module. The resulting translations, in randomized order and without identification, were evaluated by ten bilingual graduate students, both native German speakers living in the U.S. and native English speakers teaching college level German. As a control, half of the evaluators were also given translations by a bilingual human.

Note that the translation results using our parser are fairly close to those starting with a correct parse. This means that the errors made by the parser have had a relatively moderate impact on translation quality. The transfer and generation modules were developed and trained based on only 48 sentences, so we expect a significant translation quality improvement by further development of those modules.

Our system performed better than the commercial systems, but this has to be interpreted with caution, since our system was trained and tested on sentences from the same lexically limited corpus (but of course without overlap), whereas the other systems were developed on and for texts from a larger variety of domains, making lexical choices more difficult in particular.

Table 5 shows the correlation between various parse and translation metrics. Labeled precision has the strongest correlation with both the syntactic and semantic translation evaluation grades.

Metric	Syntax	Semantics
Precision	-0.63	-0.63
Recall	-0.64	-0.66
Labeled precision	-0.75	-0.78
Labeled recall	-0.65	-0.65
Tagging accuracy	-0.66	-0.56
Number of crossing brackets	0.58	0.54
Operations	-0.45	-0.41
Operation sequence	-0.39	-0.36

Table 5: Correlation between various parse and translation metrics. Values near -1.0 or 1.0 indicate very strong correlation, whereas values near 0.0 indicate a weak or no correlation. Most correlation values, incl. for labeled precision are negative, because a higher (better) labeled precision correlates with a numerically lower (better) translation score on the 1.0 (best) to 6.0 (worst) translation evaluation scale.

7 Related Work

Our basic parsing and interactive training paradigm is based on (Simmons and Yu, 1992). We have extended their work by significantly increasing the expressiveness of the parse action and feature languages, in particular by moving far beyond the few simple features that were limited to syntax only, by adding more background knowledge and by introducing a sophisticated machine learning component.

(Magerman, 1995) uses a decision tree model similar to ours, training his system SPATTER with parse action sequences for 40,000 Wall Street Journal sentences derived from the Penn Treebank (Marcus et al., 1993). Questioning the traditional n-grams, Magerman already advocates a heavier reliance on contextual information. Going beyond Magerman's still relatively rigid set of 36 features, we propose a yet richer, basically unlimited feature language set. Our parse action sequences are too complex to be derived from a treebank like Penn's. Not only do our parse trees contain semantic annotations, roles and more syntactic detail, we also rely on the more informative parse action sequence. While this necessitates the involvement of a parsing supervisor for training, we are able to perform deterministic parsing and get already very good test results for only 256 training sentences.

(Collins, 1996) focuses on bigram lexical dependencies (BLD). Trained on the same 40,000 sentences as *Spat*, it relies on a much more limited type of context than our system and needs little background knowledge.

Model	SPATTER	BLD	CONTEX
Labeled precision	84.9%	86.3%	89.8%
Labeled recall	84.6%	85.8%	89.6%
Crossings/sentence	1.26	1.14	1.02
Sent. with 0 cr.	56.6%	59.9%	56.3%
Sent. with ≤ 2 cr.	81.4%	83.6%	84.9%

Table 6: Comparing our system CONTEX with Magerman’s SPATTER and Collins’ BLD; results for SPATTER and BLD are for sentences of up to 40 words.

Table 6 compares our results with SPATTER and BLD. The results have to be interpreted cautiously since they are not based on the exact same sentences and detail of bracketing. Due to lexical restrictions, our average sentence length (17.1) is below the one used in SPATTER and BLD (22.3), but some of our test sentences have more than 40 words; and while the Penn Treebank leaves many phrases such as “the New York Stock Exchange” without internal structure, our system performs a complete bracketing, thereby increasing the risk of crossing brackets.

8 Conclusion

We try to bridge the gap between the typically hard-to-scale hand-crafted approach and the typically large-scale but context-poor statistical approach for unrestricted text parsing.

Using

- a rich and unified context with 205 features,
- a complex parse action language that allows integrated part of speech tagging and syntactic and semantic processing,
- a sophisticated decision structure that generalizes traditional decision trees and lists,
- a balanced use of machine learning and *micro-modular* background knowledge, i.e. very small pieces of highly independent information
- a modest number of interactively acquired examples from the Wall Street Journal,

our system CONTEX

- computes parse trees and translations fast, because it uses a deterministic single-pass parser,
- shows good robustness when encountering novel constructions,
- produces good parsing results comparable to those of the leading statistical methods, and
- delivers competitive results for machine translations.

While many limited-context statistical approaches have already reached a performance ceiling, we still expect to significantly improve our results when increasing our training base beyond the currently 256 sentences, because the learning curve hasn’t flattened out yet and adding substantially more examples is still very feasible. Even then the training size will compare favorably with the huge number of training sentences necessary for many statistical systems.

References

- E. Black, J. Lafferty, and S. Roukos. 1992. Development and evaluation of a broad-coverage probabilistic grammar of English-language computer manuals. In *30th Proceedings of the ACL*, pages 185–192.
- M. J. Collins. 1996. A New Statistical Parser Based on Bigram Lexical Dependencies. In *34th Proceedings of the ACL*, pages 184–191.
- U. Hermjakob. 1997. *Learning Parse and Translation Decisions From Examples With Rich Context*. Ph.D. thesis, University of Texas at Austin, Dept. of Computer Sciences TR 97-12. file://ftp.cs.utexas.edu/pub/mooney/papers/hermjakob-dissertation-97.ps.Z
- D. M. Magerman. 1995. Statistical Decision-Tree Models for Parsing. In *33rd Proceedings of the ACL*, pages 276–283.
- M. P. Marcus. 1980. *A Theory of Syntactic Recognition for Natural Language*. MIT Press.
- M. P. Marcus, B. Santorini, and M. A. Marcinkiewicz. 1993. Building a Large Annotated Corpus of English: The Penn Treebank. In *Computational Linguistics 19 (2)*, pages 184–191.
- S. Nirenburg, J. Carbonell, M. Tomita, and K. Goodman. 1992. *Machine Translation: A Knowledge-Based Approach*. San Mateo, CA: Morgan Kaufmann.
- J. R. Quinlan. 1986. Induction of decision trees. In *Machine Learning 1 (1)*, pages 81–106.
- R. L. Rivest. 1987. Learning Decision Lists. In *Machine Learning 2*, pages 229–246.
- R. F. Simmons and Yeong-Ho Yu. 1992. The Acquisition and Use of Context-Dependent Grammars for English. In *Computational Linguistics 18 (4)*, pages 391–418.
- F. Smadja, K. R. KcKeown and V. Hatzivassiloglou. 1996. Translating Collocations for Bilingual Lexicons: A Statistical Approach. In *Computational Linguistics 22 (1)*, pages 1–38.
- Globalink. <http://www.globalink.com/home.html> Oct. 1996.
- Logos. <http://www.logos-ca.com/> Oct. 1996.
- SYSTRAN. <http://systranmt.com/> Oct. 1996.