

DEFINITE NOUN PHRASES IN STATISTICAL MACHINE TRANSLATION INTO SCANDINAVIAN LANGUAGES

Sara Stymne

Linköping University, Sweden
Xerox Research Centre Europe, France

EAMT, Leuven, Belgium
May 31, 2011

TASK

- Improve translation into Danish, Swedish, and Norwegian with a focus on definiteness

- Improve translation into Danish, Swedish, and Norwegian with a focus on definiteness
- Scandinavian languages have two ways to express definiteness
- Leads to errors:
 - Spurious definite articles
 - Wrong form of nouns

- Improve translation into Danish, Swedish, and Norwegian with a focus on definiteness
- Scandinavian languages have two ways to express definiteness
- Leads to errors:
 - Spurious definite articles
 - Wrong form of nouns

- Simple pre-processing solution – that works!

- 1 DEFINITENESS
- 2 PRE-PROCESSING
- 3 SUGGESTED APPROACH
- 4 EXPERIMENTS
- 5 CONCLUSION

DEFINITENESS – DANISH

<i>NP type</i>	Danish	English
<i>sg, -mod</i>	hunden	the dog
<i>sg, +mod</i>	den sorte hund	the black dog

DEFINITENESS – DANISH

<i>NP type</i>	Danish	English
<i>sg, -mod</i>	hunden * den hund(en)	the dog
<i>sg, +mod</i>	den sorte hund * den sorte hunden *sorte hunden	the black dog

DEFINITENESS – DANISH

<i>NP type</i>	Danish	English
<i>sg, -mod</i>	hunden * den hund(en)	the dog
<i>sg, +mod</i>	den sorte hund * den sorte hunden *sorte hunden	the black dog
<i>pl, -mod</i>	hundene	the dogs
<i>pl, +mod</i>	de sorte hunde	the black dogs

DEFINITENESS – SWEDISH/NORWEGIAN

<i>NP type</i>	Swedish	English
<i>sg, -mod</i>	hunden	the dog
<i>sg, +mod</i>	den svarta hunden	the black dog

DEFINITENESS – SWEDISH/NORWEGIAN

<i>NP type</i>	Swedish	English
<i>sg, -mod</i>	hunden * den hund(en)	the dog
<i>sg, +mod</i>	den svarta hunden * den svarta hund *svarta hunden	the black dog

DEFINITENESS – SWEDISH/NORWEGIAN

<i>NP type</i>	Swedish	English
<i>sg, -mod</i>	hunden * den hund(en)	the dog
<i>sg, +mod</i>	den svarta hunden * den svarta hund *svarta hunden	the black dog
<i>pl, -mod</i>	hundarna	the dogs
<i>pl, +mod</i>	de svarta hundarna	the black dogs

OTHER USES OF DEFINITE SUFFIXES

- Demonstratives (SV)
 - This dog
 - Den (här) hunden, denna hund

OTHER USES OF DEFINITE SUFFIXES

- Demonstratives (SV)
 - This dog
 - Den (här) hunden, denna hund
- Possesives (NO)
 - My black dog
 - min svarte hund, **den** svarte hunden min

OTHER USES OF DEFINITE SUFFIXES

- Demonstratives (SV)
 - This dog
 - Den (här) hunden, denna hund
- Possesives (NO)
 - My black dog
 - min svarte hund, **den** svarte hunden min
- With relative clauses (DA, SV, NO)
 - The dog that barked is nice
 - **Den** hund som skällde är snäll
 - The dog, which barked, is nice
 - Hunden som skällde är snäll

OUTLINE

1 DEFINITENESS

2 PRE-PROCESSING

3 SUGGESTED APPROACH

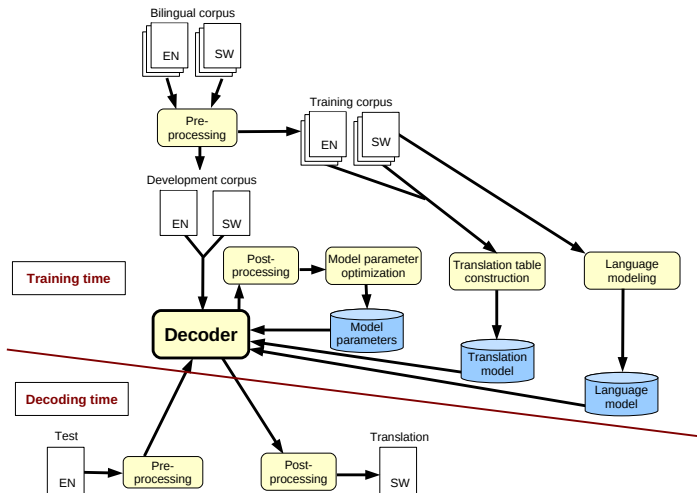
4 EXPERIMENTS

5 CONCLUSION

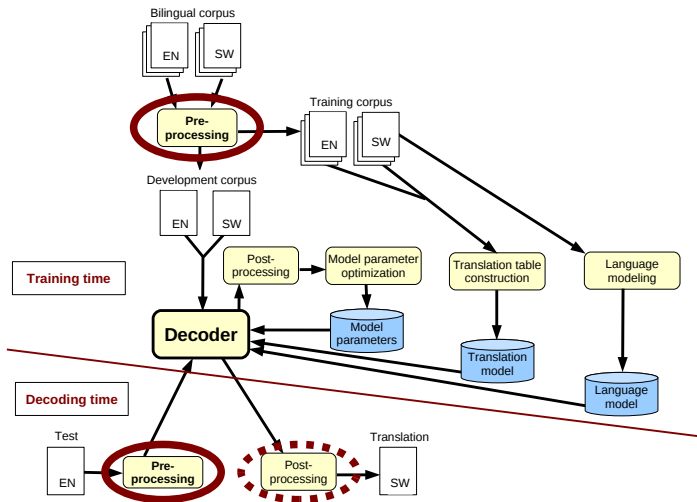
- Change the source to become more common to the target
- Change the target to become more common to the source (needs post-processing)
- Commonly used, for instance for:
 - Tokenization, lower-casing, etc
 - Compounds
 - Reordering
 - ...

- Change the source to become more common to the target
- Change the target to become more common to the source (needs post-processing)
- Commonly used, for instance for:
 - Tokenization, lower-casing, etc
 - Compounds
 - Reordering
 - ...
 - Definiteness, En-Da (Stymne, 2009)

SYSTEM INTEGRATION I



SYSTEM INTEGRATION II



- Source side processing:
 - **English** ⇒ Danish, Swedish, Norwegian
 - **Italian** ⇒ Danish
- Target side processing:
 - English ⇒ **Swedish**

OUTLINE

- 1 DEFINITENESS
- 2 PRE-PROCESSING
- 3 SUGGESTED APPROACH**
- 4 EXPERIMENTS
- 5 CONCLUSION

SOURCE SIDE PROCESSING

- Pre-processing the source, to look like the target with respect to definiteness:
 - Identify definite NPs
 - Apply suitable operators:
 - remove-DEF
 - add-DEFSUFFIX
 - move-ADJ

IDENTIFICATION OF DEFINITE NPs

- English
 - the (ADJVNUM)* NOUN+
- Italian
 - il/lo (ADJVNUM)* NOUN+ ADJ*

- Non-modified: remove-DEF, add-DEFSUFFIX
- Modified: none

the	commission	
ART	NOUN	
	commission#the	
<hr/>		
the	member	states
ART	NOUN	NOUN
	member	states#the
<hr/>		
the	71	countries
ART	NUM	NOUN
the	71	countries

- Non-modified: remove-DEF, add-DEFSUFFIX
- Modified: move-ADJ

i (il)	livelli	
ART	NOUN	
	livelli-DEF	
nei (in il)	fondi	strutturali
APPRART	NOUN	ADJ
in il	strutturali	fondi

ENGLISH-SV/NO – STRATEGY 1

- Non-modified: remove-DEF, add-DEFSUFFIX
- Modified: add-DEFSUFFIX

the	commission	
ART	NOUN	
	commission#the	
<hr/>		
the	member	states
ART	NOUN	NOUN
	member	states#the
<hr/>		
the	71	countries
ART	NUM	NOUN
the	71	countries#the

ENGLISH–SV/NO – STRATEGY 2

- Non-modified: ~~remove-DEF~~, ~~add-DEFSUFFIX~~
- Modified: ~~add-DEFSUFFIX~~

the	commission
ART	NOUN
	commission

the	member	states
ART	NOUN	NOUN
	member	states

the	71	countries
ART	NUM	NOUN
the	71	countries

TARGET SIDE PROCESSING

- Pre-processing the target, to look like the source with respect to definiteness:
 - Identify bare definite NPs
 - $\neg(\text{ADJ}\vee\text{NUM}\vee\text{ART}) \text{ NOUN}.\text{DEF}$
 - Add dummy definite articles

- Non-modified: Add article
- Modified: nothing

	medlemsstaterna	
	NOUN.DEF	
DEF	medlemsstaterna	
the	member states	
<hr/>		
det	svåra	beslutet
ART	ADJ	NOUN.DEF
det	svåra	beslutet
the	hard	decision

OUTLINE

- 1 DEFINITENESS
- 2 PRE-PROCESSING
- 3 SUGGESTED APPROACH
- 4 EXPERIMENTS**
- 5 CONCLUSION

- Moses
 - standard phrase-based SMT
- Matrax
 - phrase-based SMT
 - handles noncontiguous phrases:

- Moses
 - standard phrase-based SMT
- Matrax
 - phrase-based SMT
 - handles noncontiguous phrases:
does not **jeopardize** the effort
bringer ikke indsatsen i fare

- Automotive manuals
- Based on translation-memory data
 - English–Danish, 170k sentences
 - English–Swedish, 330k sentences
 - English–Norwegian, 400k sentences
- Europarl
 - Italian–Danish, 100k sentences
 - English–Danish, 700k sentences
 - English–Swedish, 700k sentences

RESULTS – DANISH

Languages	System	Bleu	NIST
En-Da – auto	Baseline	70.91	8.8816
	DEF-proc	76.35+	9.3629+
En-Da – auto+P+CS	Baseline	74.09	9.2328
	DEF-proc	76.17+	9.4342+
En-Da – EP	Baseline	19.01	5.6373
	DEF-proc	23.22+	6.1009+

RESULTS – DANISH

Languages	System	Bleu	NIST
En-Da – auto	Baseline	70.91	8.8816
	DEF-proc	76.35+	9.3629+
En-Da – auto+P+CS	Baseline	74.09	9.2328
	DEF-proc	76.17+	9.4342+
En-Da – EP	Baseline	19.01	5.6373
	DEF-proc	23.22+	6.1009+
It-Da – EP	Baseline	10.54	4.3924
	DEF-proc	12.04+	4.5754+

RESULTS – SWEDISH

Languages	System	Bleu	NIST
En-Sv – auto	Baseline	61.20	9.7934
	DEF-proc1	58.84-	9.4898-
	DEF-proc2	62.05+	9.9129+
En-Sv – EP+P	Baseline	21.63	6.1085
	DEF-proc2	22.03+	6.1778+

RESULTS – SWEDISH

Languages	System	Bleu	NIST
En-Sv – auto	Baseline	61.20	9.7934
	DEF-proc1	58.84-	9.4898-
	DEF-proc2	62.05+	9.9129+
En-Sv – EP+P	Baseline	21.63	6.1085
	DEF-proc2	22.03+	6.1778+
	Target-proc	21.31-	6.1018

RESULTS – NORWEIGAN

Languages	System	Bleu	NIST
En-No	Baseline	58.57	8.8846
	DEF-proc1	56.59-	8.6943-
	DEF-proc2	59.08	8.9092

TENTATIVE ERROR ANALYSIS

- English–Swedish Europarl
- Manual analysis of errors in 50 sentences
- Fewest total errors for target proc.
- Source side: more wrong or extra function words
- Definite processing: fewer word order and punctuation errors
- Approximately the same number of definiteness errors in all systems:
 - Source side: only wrong form of nouns
 - Other systems: mixed error types, e.g. spurious articles

EXAMPLE, ITALIAN–DANISH

- Src: Non pensa che dovremmo ormai esplorare nuovi modi per affrontare il problema delle nostre relazioni con **la Birmania**?
- Ref: Finder De ikke, at vi bør se på andre måder, hvorpå vi kan tackle problemet med vores relationer i **Burma**?
- Baseline: Tænker ikke at vi bør efterhånden resterende tid nye måder fat af vores forbindelser med **den Burma**?
- DEF-proc: Tænker ikke at vi bør overveje nye måder nu af vores forbindelser med **Burma** tackle problemet?

EXAMPLE, ITALIAN–DANISH

- Src: Non **pensa** che dovremmo ormai **esplorare** nuovi modi per **affrontare** il problema delle nostre relazioni con la Birmania?
- Ref: **Finder De** ikke, at vi bør **se på** andre måder, hvorpå vi kan **tackle** problemet med vores relationer i Burma?
- Baseline: Tænker ikke at vi bør efterhånden resterende tid nye måder fat af vores forbindelser med den Burma?
- DEF-proc: Tænker ikke at vi bør **overveje** nye måder nu af vores forbindelser med Burma **tackle** problemet?

EXAMPLE, ENGLISH–SWEDISH

- Src: Men who commit murders rarely receive long
 prison sentences . . .
- Ref: Männen som utför morden får sällan långa
 fängelsestraff . . .
- Baseline: De män som begår morden sällan få långa
 fängelsestraff . . .
- DEF-proc2: Män som begår mord sällan få långa
 fängelsestraff . . .
- Target-proc: De män som begår morden sällan erhåller långa
 fängelsestraff . . .

EXAMPLE, ENGLISH–SWEDISH

Src:	Men who commit murders rarely receive long prison sentences . . .
Ref:	Männen som utför mordet får sällan långa fängelsestraff . . .
Baseline:	De män som begår mordet sällan få långa fängelsestraff . . .
DEF-proc2:	Män som begår mord sällan få långa fängelsestraff . . .
Target-proc:	De män som begår mordet sällan erhåller långa fängelsestraff . . .

EXAMPLE, ENGLISH–DANISH

- Src: The majority of **the women** will be travelling to a conference of members of parliament in Berlin.
- Ref: Hovedparten af **kvinderne** skal af sted til en konference for parlamentsmedlemmer i Berlin.
- Baseline: Størstedelen af **de kvinder** bliver til en konference for parlamentsmedlemmer rejser i Berlin.
- DEF-proc: Flertallet af **kvinderne** bliver rejser til en konference af medlemmer af parlamentet i Berlin.

EXAMPLE, ENGLISH–DANISH

- Src: The majority of the women will be travelling to a conference of members of parliament in Berlin.
- Ref: Hovedparten af kvinderne skal af sted til en konference for parlamentsmedlemmer i Berlin.
- Baseline: Størstedelen af de kvinder bliver til en konference for parlamentsmedlemmer rejser i Berlin.
- DEF-proc: Flertallet af kvinderne bliver rejser til en konference af medlemmer af parlamentet i Berlin.

EXAMPLE, ENGLISH–DANISH

- Src: The majority of the women **will be travelling** to a conference of **members of parliament** in Berlin.
- Ref: Hovedparten af kvinderne **skal af sted** til en konference for **parlamentsmedlemmer** i Berlin.
- Baseline: Størstedelen af de kvinder **bliver** til en konference for **parlamentsmedlemmer rejser** i Berlin.
- DEF-proc: Flertallet af kvinderne **bliver rejser** til en konference af **medlemmer af parlamentet** i Berlin.

OUTLINE

- 1 DEFINITENESS
- 2 PRE-PROCESSING
- 3 SUGGESTED APPROACH
- 4 EXPERIMENTS
- 5 CONCLUSION

CONCLUSIONS

- Special treatment of definiteness is useful
- Source side preprocessing – positive results for a variety of language pairs and datasets
- Target side processing – no positive results
- Careful modification of preprocessing data needed for new language pairs

FUTURE WORK

- Thorough error analysis
- More elaborate preprocessing strategy, that takes more constructions into account
- Other language pairs
- Present a lattice to decoder

Thank you for your attention!

Tak for opmærksomheden!

Tack för uppmärksamheten!