

# Analyzing Film Adaptation through Narrative Alignment

Tanzir Pial, Shahreen Salim, Charuta Pethe, Allen Kim, Steven Skiena

Department of Computer Science,  
Stony Brook University, NY, USA

{tpial,ssalimaunti,cpethe, allekim, skiena}@cs.stonybrook.edu

## Abstract

Novels are often adapted into feature films, but the differences between the two media usually require dropping sections of the source text from the movie script. Here we study this screen adaptation process by constructing narrative alignments using the Smith-Waterman local alignment algorithm coupled with SBERT embedding distance to quantify text similarity between scenes and book units. We use these alignments to perform an automated analysis of 40 adaptations, revealing insights into the screenwriting process concerning (i) faithfulness of adaptation, (ii) importance of dialog, (iii) preservation of narrative order, and (iv) gender representation issues reflective of the Bechdel test.

## 1 Introduction

Book-to-film adaptation plays an important role in film-making. From an artistic point of view, there are many possible ways to craft a movie from any given book, all of which entail changes (addition, deletion, and modification) to the structure of the text. Books and films are different forms of media, with different characteristics and goals. Novels are generally much longer texts than screenplays, written without the strict time-limits of film. Further, film adaptations present the screenplay writers' interpretation of the book, whose intentions are often different from the author of the original text.

In this paper, we study which parts of books get excised from the script in their movie adaptations. Our technical focus is on methods to identify alignments between each unit (e.g., dialog, set-up of a scene) of a movie script with the paragraphs of the book. However, certain book paragraphs must be left unmatched when appropriate, reflecting sections of the book deleted in the movie adaptation for simplifying or focusing the action. We primarily focus on understanding screenwriter behavior and discovering patterns in the book-to-film adap-

tation process.

The importance of book-to-film adaptation is evidenced by its economic and cultural impact. [Frontier Economics \(2018\)](#) found that books were the basis of more than 50% of the top 20 UK-produced films between 2007-2016. These films grossed £22.5bn globally, accounting for 65% of the global box office gross of the top UK films. Recent availability of large-scale book and screenplay data empowers the NLP community to study the screenwriting process. Our work opens new lines of research in this domain, providing insight into the thought processes of screenwriters and film producers.

The relationship between book source and film script has repeatedly been the subject of research within the NLP community. The degree to which movie adaptations are faithful to the original books was raised by [Harold \(2018\)](#), who considers two questions: how it can be decided if a movie is faithful to its book, and whether being faithful to its source is a merit for a movie adaptation. There have been many works focusing on analyzing movie adaptations of specific books, such as [Rahmawati et al. \(2013\)](#) and [Österberg \(2018\)](#).

With the advent of GPT-3 ([Brown et al., 2020](#)) and more advanced models, Artificial Intelligence (AI) systems are increasingly being proposed to automate creative tasks in the entertainment industry. The Writers Guild of America's historic strike highlighted concerns about AI's use in covered projects – specifically, there was a contention that AI should not be involved in the direct writing or rewriting of literary material, nor should it be utilized as source material ([WGA, 2023](#)). A book to film script alignment and analysis tool has potential application for both sides of the debate, e.g., by creating training dataset for generative models for rewriting creative materials into different formats and analyzing the differences between materials created by humans



Figure 1: When one book becomes two movies. Alignments of the seventh Harry Potter book (top line) with scripts for the Part 1 (left) and Part 2 (right) scripts. The green edges denote alignment with the correct portion of the book, as opposed to the magenta edges. Our local alignment methods recognize the split structure of the book much better than global alignment methods like *Book2Movie* (Tapaswi et al., 2015), who align only 41.4% of Part 2 with the second part of the book, compared to 81.6% with our alignment.

and AI, as well as identifying areas where AI may have limitations.

We frame the book-to-script problem as a sequence alignment problem, where a book and its movie script are two text sequences. Sequence alignment techniques are critically important in bioinformatics, specifically for efficiently aligning genome and protein sequences. In the field of computer vision, some of these algorithms have been adapted for image matching (Thevenon et al., 2012). Pial and Skiena (2023) posit that these algorithms have a role to play in the analysis of long texts in NLP too. We adapt their proposed text alignment methods for the book-to-film adaptation domain. The primary mechanism of most sequence alignment algorithms does not change based on the components of the sequence. Provided with a definition for similarity (or distance) between individual components, they can be adapted to any domain.

Our primary contributions<sup>1</sup> include:

- *Book-Script Alignment Algorithm* – To identify commonalities between a book and its script adaptation, we introduce a domain-adapted book-to-film alignment approach. This method builds upon the techniques advanced by Pial and Skiena (2023) for general narrative alignment. It leverages modern text embedding methodologies in conjunction with local alignments generated by the Smith-Waterman (SW) algorithm (Smith and Waterman, 1981), a seminal technique in computational biology. Our approach proves significantly more accurate than prior methods including *Book2Movie* (Tapaswi et al., 2015). Our alignments identify which portions of the book are excised in the adaptation, providing novel insights into the screenwriting process.

<sup>1</sup>All codes and datasets are available at [https://github.com/tanzir5/alignment\\_tool2.0](https://github.com/tanzir5/alignment_tool2.0)

- *Recognizing Faithfulness of Adaptations* – Certain film adaptations retain only the title of the putative source book, while others strive to fully capture the contents and spirit of the source. We use our alignment methods to define a faithfulness statistic (retention percentage), and demonstrate its performance on 18 book-script pairs where published critics have commented on the faithfulness of the adaptation. We achieve a Spearman rank correlation of 0.65 between retention percentage and critic labels, significant to the 0.001 level.
- *Investigations of Screenwriter Behavior* – For 40 book-film adaptations, we analyze screenwriter decisions from several perspectives:
  - We demonstrate that book-units with dialog are substantially more likely to be retained than other narrative text, significant with a p-value  $< 3 \times 10^{-6}$ .
  - We prove that the narrative order of book-script pairs are highly consistent, demonstrating that local Smith-Waterman alignments capture global narrative order.
  - We show that script alignments can reveal whether the adaptation is likely to pass the gender-role sensitivity Bechdel test based on text from a given book.
- *Datasets for Text-to-Text Alignment* – We introduce three novel datasets designed to facilitate research on the book-to-movie alignment task. The first consists of six book-script pairs where each unit of the book is annotated as either retained or removed in the corresponding screenplay. The second dataset contains two book-script pairs where we fully align individual chapters of the book with the corresponding scenes in the movie. Finally, we provide a dataset of 40 book-script pairs to ex-

plore additional research questions associated with film adaptation. Our software, testing procedures, and data resources will be made publicly available upon acceptance of this paper, subject to copyright limitations on the original data.

The outline of this paper is as follows. We survey work on script analysis and alignment methods in Section 2. Our alignment methods based on Smith-Waterman and SBERT embeddings are presented in Section 3, and the datasets we develop in Section 4. The accuracy of our alignment algorithms is established in Section 5, before we apply these methods to four aspects of film adaptation in Section 6.

## 2 Related Work

The task of aligning the video of a movie with a book has been explored in prior research. Tapaswi et al. (2015) proposed a graph-based approach to align book chapters with corresponding movie scenes, treating the alignment as a shortest path finding problem. Zhu et al. (2015) utilized neural sentence embeddings and video-text neural embeddings to compute similarities between movie clips and book sentences. In contrast, our work primarily analyzes the removed and retained parts of the book to gain insights into screenwriter behavior while also performing book-to-film alignment.

Core to our proposed method is the dynamic programming (DP) algorithm for alignment. DP and the associated dynamic time warping algorithms have been widely applied in various film alignment tasks, including aligning script dialogs with transcript dialogs (Everingham et al., 2006; Park et al., 2010), aligning scripts with video for person identification (Bauml et al., 2013), action recognition (Laptev et al., 2008), and identifying scene order changes in post-production (Lambert et al., 2013), aligning plot synopses with video (Tapaswi et al., 2014), and annotating movie videos with script descriptions (Liang et al., 2012). Kim et al. (2020) uses DP to segment novels into parts corresponding to a particular time-of-day.

Neural machine translation (Bahdanau et al., 2014) models create soft alignments between target words and segments of the source text relevant for predicting the target word. The size of the book and film scripts restrict us to directly employ neural models like this. Other than translations involving two languages, Paun (2021) proposes using

Method	HP2	HP4	Complexity
Baseline (Length)	22.6	3.0	$O(c + s)$
Book2Movie	59.5	52.5	$O(c^2 s \log(cs))$
Greedy + SBERT	61.2	51.5	$O(mn \log(mn))$
SW + SBERT	<b>85.3</b>	<b>66.2</b>	$O(mn \log(mn))$

Table 1: Comparison of alignment accuracy and efficiency of different algorithms. For Baseline (Length) we align each chapter sequentially with a number of scenes one by one according to the length of the chapters.  $s$  = no. of scenes,  $c$  = no. of chapters,  $m$  = no. of book paragraphs,  $n$  = no. of scene paragraphs.

Doc2Vec (Le and Mikolov, 2014) embeddings for creating monolingual parallel corpus composed of the works of English early modern philosophers and their corresponding simplified versions.

Additionally, several previous works have addressed different aspects of film scripts, such as genre classification (Shahin and Krzyżak, 2020), estimating content ratings based on the language use (Martinez et al., 2020), script summarization (Gorinski and Lapata, 2015), sentiment analysis (Frangidis et al., 2020), automated audio description generation (Campos et al., 2020), creating dialog corpora (Nio et al., 2014), creating multimodal treebanks (Yaari et al., 2022). Lison and Meena (2016) performs subtitle to movie script alignment for creating training dataset for automatic turn segmentation classifier. However, to the best of our knowledge, ours is the first-ever work on automated analysis of book-to-film adaptations on a moderately large scale (40 books).

In bioinformatics, sequence alignment has been studied in depth for many decades. Accurate but comparatively slower classes of algorithms include the DP algorithms like local alignments by Smith and Waterman (1981), global alignments by Needleman and Wunsch (1970), etc. Global alignments align the whole sequence using DP, while local alignments try to align locally similar regions. In this work, we use Smith-Waterman (SW) to produce local alignments, which are subsequently used to construct the final global alignment. Heuristic but faster algorithms include Altschul et al. (1990).

## 3 Aligning Books with Film Scripts

Here we describe the Smith-Waterman algorithm for local sequence alignment, including the similarity metrics we use to compare books and scripts.

### 3.1 The Smith-Waterman Algorithm

We modify the classical Smith-Waterman algorithm (SW) to allow for many-to-many matching, since a paragraph in the book can be conceptually aligned with multiple units of the script. We calculate the highest alignment score for two sequences  $X$  and  $Y$  of length  $m$  and  $n$ , respectively, using the recurrence relation  $H(i, j)$ .

$$H(i, j) = \max \begin{cases} H(i-1, j-1) + S(X_i, Y_j), \\ H(i-1, j) + g + \max(0, S(X_i, Y_j)), \\ H(i, j-1) + g + \max(0, S(X_i, Y_j)), \\ 0 \end{cases} \quad (1)$$

To identify the most similar segment pair, the highest-scoring cell in the SW DP matrix  $H$  is located, and segments are extended left towards the front of the sequences until a zero-score cell is reached. The contiguous sub-sequence from the start cell to the zero-score cell in each sequence forms the most similar segment pair.

The algorithm allows for matching two components using a similarity metric or deleting a component with a gap penalty,  $g$ . We set  $g = -0.7$  empirically. The algorithm has a time complexity of  $O(mn)$ .

### 3.2 Independent Matches in Local Alignments

A complete book-script alignment consists of a collection of local alignments, but there is no single standard strategy in the literature for creating global collections from local alignment scores. Here we use a greedy approach, processing matching segments in decreasing alignment score order. To eliminate weak and duplicate local alignments, we skip over previously-selected paragraph pairs. The cost of sorting the DP matrix scores results in an algorithm with  $O(mn \log(mn))$  time complexity.

Using the paragraph-level alignments produced by SW, we compute information at two different levels of granularity: decision on the removal of book units (usually made up of 5-10 paragraphs, as discussed in Section 4.1) and alignment of chapters (made up of 25-50 paragraphs). Generally, book units prove a more suitable choice. Conversely, aligning chapters with scenes provides a universally recognized evaluation method employed in previous works (Tapaswi et al., 2015).

We interpret the removal of a book unit from the script whenever less than half of its paragraphs align with any scene paragraph. In case of chapter

alignment, each scene paragraph with an alignment casts a vote for the chapter of the aligned book paragraph. We align the chapter with the maximum number of votes with the scene.

### 3.3 Similarity Metric

We use paragraphs as the smallest unit for alignment and generate semantically meaningful embeddings for each book and script paragraph using the pretrained SBERT model (Reimers and Gurevych, 2019). While SBERT is primarily designed for sentence embeddings, it has been trained on diverse datasets for various purposes. We use the SBERT model<sup>2</sup> pretrained on the MS MARCO (Nguyen et al., 2016) dataset for information retrieval. This particular model is trained to maximize cosine similarity between relevant query and passage pairs. Given that script paragraphs typically consist of one to two sentences resembling single-sentence queries in the training data, and book paragraphs are generally longer akin to multi-sentence passages in the training data, this model is well-suited for our method.

Dayhoff et al. (1978) suggests that DP based algorithms perform well when the expected similarity score of two random unrelated components is negative and only related components have a positive similarity score. To incorporate this idea, we compute the similarity score between two paragraphs  $x$  and  $y$  as,

$$S(x, y) = \sigma(Z(x, y)) - th_s \times 2 - 1 \quad (2)$$

where  $\sigma(\cdot)$  denotes the logistic sigmoid function,  $Z(\cdot, \cdot)$  denotes the z-score of the cosine similarity between  $x$  and  $y$  derived from a distribution of similarity scores between random paragraphs, and  $th_s$  denotes a threshold for having a positive score. The threshold  $th_s$  ensures that all pairs with less than  $th_s$  z-score have a negative similarity score. We set  $th_s$  to +0.6 empirically, but found that all thresholds from +0.5 to +1 z-score performed similarly.

## 4 Datasets

This study focuses on three data sets of annotated book-script pairs:

- **Removed Parts Annotation Set.** For six book-script pairs (four Harry Potter and two Jane Austen classics), we manually annotated

<sup>2</sup><https://www.sbert.net/docs/pretrained-models/msmarco-v3.html>

Alignment Method	Similarity Metric	PB	HP2	HP4	HP7P1	HP7P2	PP
Greedy (Baseline)	jaccard	0.68	0.64	0.32	0.34	0.38	0.67
	glove	0.57	0.58	0.27	0.28	0.31	0.55
	hamming	0.54	0.51	0.29	0.12	0.35	0.52
	tf-idf	0.63	0.63	0.29	0.32	0.32	0.64
Smith- Waterman (SW)	SBERT	<b>0.69</b>	0.72	0.43	0.40	0.45	0.64
	jaccard	0.60	0.72	0.45	0.73	0.63	0.6
	glove	0.56	0.58	0.27	0.37	0.33	0.54
	hamming	0.42	0.48	0.30	0.24	0.20	0.47
	tf-idf	0.59	0.68	0.41	0.64	0.55	0.55
SBERT	0.67	<b>0.73</b>	<b>0.48</b>	<b>0.74</b>	<b>0.73</b>	<b>0.65</b>	

Table 2: F1 scores of different methods to determine whether book unit is retained or removed in the film adaptation. SBERT+SW achieves the highest F1 score on six of seven books. *HP* denotes the *Harry Potter* series by JK Rowling while *PB* and *PP* denote *The Princess Bride* by William Goldman and *Pride and Prejudice* by Jane Austen respectively

each book unit as *retained* or *removed*. They are listed in Table A.1 of the appendix. We note that the dataset contains five books, not six, because two movies were adapted from the seventh Harry Potter book (HP7).

- **Manual Alignment Set.** We manually aligned two books with their movie adaptation scripts. We aligned each scene with a chapter of the book. The two book-script pairs are two volumes of the *Harry Potter* series (HP2 and HP4, books also used in the first dataset).
- **Automated Analysis Set.** We collected 40 book-script pairs for automated analysis from a mix of Gutenberg (n.d.), the HathiTrust Digital Library (n.d.), and personal sources. Information about these books is provided in Table B.1 where each book-film is given a unique ID and Table B.2 in the appendix.

We collected the scripts from popular websites that publicly host scripts using the code developed by Ramakrishna et al. (2017). The length of books in pages and associated films in minutes have a Pearson correlation of 0.36, indicating that longer books get made into longer films. The process of manual annotation involved multiple researchers, but each book-movie pair was annotated by a single person without any involvement of other annotators.

#### 4.1 Segmenting Texts

Film scripts generally follow a typical format with *slug lines* at the beginning of each scene that provide information such as location and time of day (Cole and Haag, 2002). This standardized format facilitates parsing and segmentation of movie scripts into individual scenes. In the case of film scripts, a paragraph usually corresponds to a single

bit of dialog or set-up of the scene.

In contrast, books generally lack such a rigid structure. While chapters serve as a common unit of segmentation for books, they are often too lengthy for analyzing retention statistics. To investigate the scriptwriter’s decisions regarding the retention of book parts, it becomes necessary to segment books into smaller units. We adopt the text segmentation algorithm proposed by Pethe et al. (2020). This algorithm leverages a weighted overlap cut technique to identify local minimas as breakpoints where the word usage transitions to a different subset of vocabulary indicating a context switch. These resulting text units are referred to as *book units*.

## 5 Evaluation

We evaluate the performance of our alignment algorithm against several baselines and previous work. There are two distinct aspects to be considered in our evaluation: (i) the performance of different text similarity metrics, and (ii) local vs. global alignment approaches such as *Book2Movie* (Tapaswi et al., 2015). Additionally, we provide qualitative evaluation of our alignments in Appendix C.

### 5.1 Baselines

**Different Similarity Metrics:** To test the impact of similarity metric on performance, we evaluate five different versions of SW, using the similarity metrics of Jaccard similarity, a word embedding-based metric (GloVE), Hamming distance, TF-IDF and SBERT, respectively. Details of these metrics appear in Appendix D.

**Greedy Baselines:** We formulate baseline algorithms which uses greedy matching, where the pairs of paragraphs are aligned in decreasing or-

der of their similarity values while maintaining a 1-1 book-script match. Both SBERT+SW and SBERT+greedy use SBERT embeddings as the similarity metric, but SW can utilize the similarity information of the neighborhood paragraphs during alignment, which the greedy baseline cannot. Therefore any improvement of SW+SBERT over baseline must be attributed to the SW alignment method.

## 5.2 Retention Accuracy

Book retention is a weaker standard than fine alignment. We manually annotated each book unit as retained or removed in the movie for the six book-script pairs in Table A.1. In this context, a false positive book unit denotes that the algorithm marked this unit as retained wrongly, while a true positive book unit denotes that both the algorithm and the manual annotator marked this unit as retained. We use 6,546 book units in this experiment.

Our results are presented in Table 2. The SBERT and Smith-Waterman combination produced the best F1 score for retention classification for five of the six book-script pairs. On the remaining instance it finished second to SBERT with the greedy heuristic. Based on these results, we will use SBERT+SW on our film adaptation analysis to follow.

## 5.3 Alignment Accuracy

Building gold-standard alignments between book-length novels and scripts is a challenging task. We manually aligned movie scenes with book chapters for two book-script pairs (HP2 and HP4) and compared our SW+SBERT method against *Book2Movie* (Tapaswi et al., 2015) and Greedy+SBERT baselines. Accuracy is measured as the percentage of correctly aligned scenes.

The *Book2Movie* method formulates the alignment problem as a shortest-path finding task in a graph, employing Dijkstra’s algorithm to solve it. They utilize dialogue and character frequency as their similarity metric and directly align chapters with scenes. We created a simple dialog and character frequency based similarity metric to fit into the *Book2Movie* alignment algorithm. Our method’s alignment accuracy is 25.8% and 13.7% more than *Book2Movie* for HP2 and HP4 respectively, as presented in the Table 1.

The *Book2Movie* algorithm assumes global priors, so that a book chapter towards the end of

the text gets a penalty for aligning with an early movie scene and vice versa. This technique aims to restrict alignments between distant scenes and chapters. However this assumption becomes troublesome when the two sequences do not follow similar order e.g., the seventh HP book and the two movies adapted from it. Our method does not assume a global prior, allowing it to successfully align both the movies with the correct parts of the book, as shown in Figure 1. *Book2Movie* correctly aligns the whole first movie with the first part of the book, while our method aligns 97.5% of the first movie correctly. But *Book2Movie* aligns only 41.4% of the second film correctly, whereas our method achieves 81.6% accuracy there. This proves how global priors can negatively influence accuracy of alignment algorithms.

## 6 Analysis of the Film Adaptation Process

The economics of the movie industry imposes stronger constraints on the length of scripts than the publishing industry forces on books. Our alignments illustrate the relationship between book and script lengths, and running times. Figure 2 (left) shows that the retention percentage of a book in the movie has an inverse relationship with the length of the book, whereas Figure 2 (middle) shows that longer movies tend to retain more parts of the books. Finally, Figure 2 (right) shows that longer books tend to have longer movie adaptations. Script retention information for all book-movie pairs in our dataset is presented in the Figure 3, using alignments constructed by our SW+SBERT method.

The book-script alignment methods we have developed so far enable us to analyze the film adaptation process in several interesting ways. The subsections below will consider four particular tasks, namely: (i) measuring the faithfulness of a film adaptation to its original source, (ii) the influence of dialog on script retention, (iii) the preservation of temporal sequencing in adaptation, and (iv) gender representation decisions in film adaptation.

### 6.1 Faithfulness of Movies to Source Novels

The faithfulness of movie adaptations to their original source material has long been a topic of research and discussion (Leitch, 2008). Our alignment methods provide to quantify the faithfulness of scripts to their source books.

We use the alignments for 40 book-movie pairs

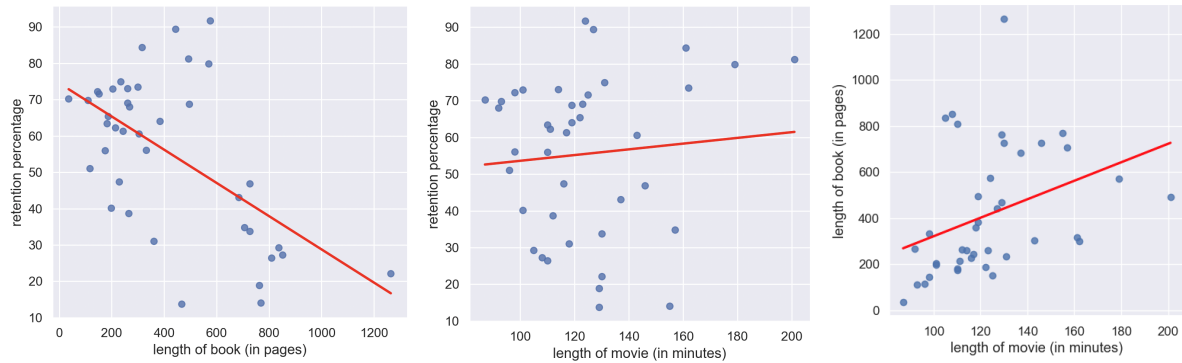


Figure 2: Relationships between book length, script length, and playing time. Scripts contain smaller fractions of longer books: correlation  $-0.58$  (on left). Scripts for longer movies contain larger fractions of the book: correlation  $0.09$  (in middle). Longer books lead to longer movies: correlation  $0.36$  (on right).

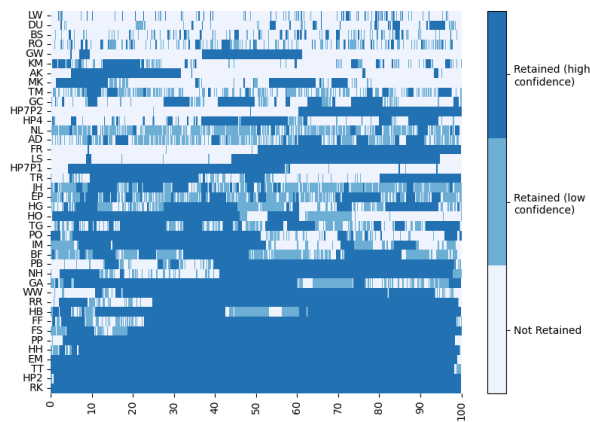


Figure 3: Alignments for 40 book-movie scripts. Here the parts of the book are colored based on if they are not retained or retained, with low or high confidence, by SW+SBERT according to the generated alignment scores.

presented in the Figure 3 to identify which text in each book gets aligned, marking it as *retained* in the script. We propose using the percentage of retained text as a metric for measuring script faithfulness, acknowledging that films completely focused on a small section of the book may be classified as unfaithful.

Table 3 presents the books with the highest and lowest amount of retention respectively. The second Jurassic Park film (The Lost World), based on the novel by Michael Crichton with the same name, had the lowest retention in our dataset, which supports claims that the movie was “*an incredibly loose adaptation of Crichton’s second book*” (Weiss, 2023). On the other end of the spectrum, both critics (Blohm, 2016) and our alignments finds two movie adaptations based on Jane Austen’s novels to be the most faithful to its source material.

We have annotated 18 movie adaptations with binary labels indicating faithfulness based on critic reviews. We describe the labelling process and the data sources in Appendix E. The retention percentage demonstrates a Spearman rank correlation of  $0.65$  with a p-value of  $0.001$  and achieves an AUC score of  $0.875$  for classifying faithfulness. This strengthens the cause for using retention percentages found by SW+SBERT as a faithfulness metric.

## 6.2 Retention of Dialog from Books

Dialogs between characters is a critical aspect of visual media. We hypothesize that movie adaptations tend to retain the more dialog-heavy parts of the book than descriptive parts without speech.

To quantify this preference, we compute a dialog retention ratio  $u_b$  for each book-movie pair  $b$  as:

$$u_b = \frac{|r_b \cap d_b|}{|d_b|} \times \frac{|b|}{|r_b|} \quad (3)$$

where  $r_b$  denotes the retained part of book  $b$ , and  $d_b$  denotes the part of book  $b$  with dialogs. Similarly we compute  $v_b$ , the representative value for retaining texts without dialogs. A value greater than 1 for  $u_b$  signifies that dialog-heavy parts are retained more than non-dialog parts. Figure 4 shows that for majority of the books, texts with dialog are retained more than texts without it.

Statistically, we find that dialog has mean retention of  $u = 1.04$ , compared to non-dialog with a mean retention of  $v = 0.97$ . A t-test comparing the distribution of  $u_b$  and  $v_b$  over all books in our data set shows that they follow two different distributions with a p-value  $< 3 \times 10^{-6}$ . The effect size is calcu-

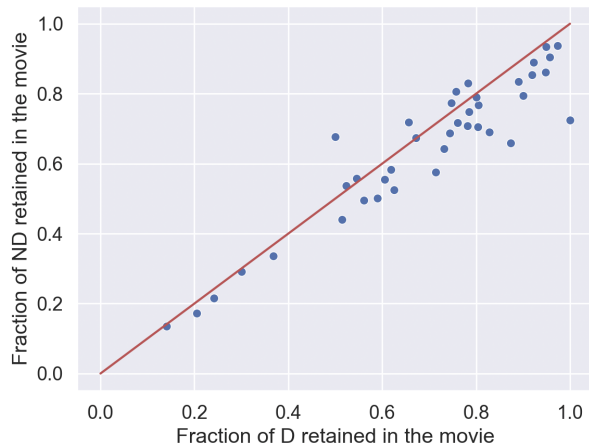


Figure 4: Paragraphs of books with dialog (D) are more likely to be retained in the script than paragraphs containing no dialog (ND). Each blue point denotes a book-script pair, represented by the fraction of dialog and no-dialog text retained in the script. The majority of the pairs (33/40) fall below the red diagonal  $x = y$  line.

lated to be 1.09 using Cohen’s  $d$ , signifying a large effect.

### 6.3 Sequential Orderings in Books and Adaptations

Narrative order in both books and films generally follow sequentially with time, despite the existence of literary devices such as flashbacks. We propose that the sequential order of events in books and scripts will largely coincide. Such a hypothesis cannot be tested with a global alignment algorithm such as *Book2Movie*, because such global alignments are forced to be sequential by design. But our **local** Smith-Waterman alignments permit a meaningful test, by quantifying the degree of monotonicity exhibited in a book-script alignment. SW aligns each book paragraph to an arbitrary paragraph in the script or let it remain unaligned.

To score alignment monotonicity, we compute the longest increasing subsequence (LIS) of the aligned book-script pair, representing the longest story portion in the book presented in the same order in the script. Figure 5 presents the length of LIS for all book-movie pairs in our dataset, along with the expected length according to chance. Logan and Shepp (1977) proved that the expected LIS of two random  $n$ -element permutations is  $\sim 2\sqrt{n}$ . All our alignments display much larger increasing subsequences, closer to the trivial upper bound of  $n$ .

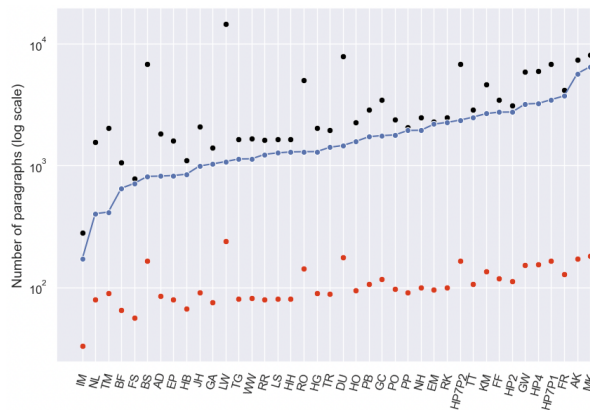


Figure 5: Books and scripts generally proceed in the same temporal order, so book-script alignments should increase monotonically. We plot the length of the longest increasing subsequence (LIS) of each  $n$ -part alignment in blue, and compare to the expected LIS (in red) for a random permutation ( $2\sqrt{n}$ ). The black points denote the upper limit. The significantly higher LIS lengths prove that local Smith-Waterman alignments capture the global temporal order.

### 6.4 A Modified Bechdel Test

The cultural importance of movies makes the unbiased representation of women in film an important issue. The Bechdel test (Bechdel, 1986) provides a simple framework for evaluating the representation of women in films. To pass the test, a film must satisfy three requirements: (i) There are two women in the film (ii) who talk with each other (iii) about something other than men. Previous works have focused on its usage for analysing films and society as a whole (Selisker, 2015) as well as automating the test (Agarwal et al., 2015). However, its binary nature fails to capture the degree of unbiased representation. Our ability to segment books into the respective portions which are/are not included in a corresponding movie script permits us to study the issues of adaptation through a Bechdel-inspired lens along a continuum.

Let  $d$  represent the set of all dialogs in a book,  $d_{f,b}$  denote the dialogs of female characters without any mention of male characters, and  $rd$  encompass all retained dialogs in the film. We introduce the Bechdel representation ratio  $B$  as the ratio between retention fraction of  $d_{f,b}$  and overall retention fraction of dialogs.

$$B = \frac{|d_{f,b} \cap rd|}{|d_{f,b}|} \times \frac{|d|}{|rd|} \quad (4)$$



Book Name	Year (Book, Movie)	Retention %	Critic Opinion
The Lost World	1995, 1997	13.8	" <i>incredibly loose adaptation</i> " (Weiss, 2023)
Dune	1965, 1984	14.1	" <i>the last filmmaker you'd want to adapt your novel to the screen if you're looking for a faithful retelling</i> " (Davis, 2018)
The Grapes of Wrath	1939, 1940	18.9	-
Anna Karenina	1878, 2012	22.1	-
All the King's Men	1946, 1949	26.4	" <i>vary wildly from one another</i> " (Davis, 2018)
The Two Towers	1954, 2002	79.8	" <i>Surprisingly Book Accurate</i> " (Gass, 2019)
The Return of the King	1955, 2003	81.2	" <i>Surprisingly Book Accurate</i> " (Gass, 2019)
Harry Potter 2	1998, 2002	84.3	" <i>followed the book the most closely</i> " (Collier, 2017)
Pride and Prejudice	1813, 2005	89.4	" <i>fairly faithful to the source</i> " (Blohm, 2016)
Emma	1816, 1996	91.7	" <i>adapted fairly faithfully to film</i> " (Blohm, 2016)

Table 3: Faithfulness of screen adaptation: the five film scripts with the least/most book retention in our dataset.

We consider books with a Bechdel representation ratio  $B > 1$  to be a good predictor of whether the film is likely to pass the Bechdel test. For a collection of 26 book-film pairs which have been assessed on the Bechdel test by crowdsourcing (Hickey, 2014), only 3 of the 10 films pass with  $b \leq 1$ , while 10 of 16 pass with  $b > 1$ , i.e. our algorithm correctly identifies the Bechdel test result for 17/26 film adaptations. More details about the data can be found in Appendix F.

## 7 Conclusion

In this paper, we have adapted a local dynamic programming alignment algorithm to efficiently align books and scripts and conducted a proof-of-concept analysis of 40 film adaptations, revealing insights into screenwriters' decision-making from various perspectives. Our work demonstrates that alignment methods can be used to identify which parts of books appear in movies, and opens up new research directions regarding how films are adapted from books. Future research directions include exploring patterns in screenwriting process that reflect the prevailing zeitgeist and cultural dynamics. By leveraging automated methods, it is possible to investigate how these patterns vary across different time periods, cultures as well as for characters of different genders and ethnicities.

One future study would be to create a model that can embed video frames and book text in the same embedding space essentially converting two different media to the same space that can create better

metrics to quantify similarity, yielding better alignments using the Smith-Waterman algorithm. This study can shed light onto how much the auditory and visual analysis strengthens the adaptation analysis process.

## Limitations

The *Removed Parts Annotation Set* discussed in Section 4 employs a non-standard segmentation unit called *book units*. While chapters and paragraphs are standard alternatives, they each face their own challenges. Chapters are too large to be annotated as fully removed or retained in film adaptation while annotating paragraphs will require a high number of human hours. Book units presented a promising alternative that required less resources and also created units more likely to be completely removed or retained in the film. However the manual annotator occasionally thought a book unit was partially retained in the film. For future research, annotating book paragraphs would be an alternative given sufficient resources, although our annotated book unit dataset remains a readily available option for evaluation.

The alignment of books with their film adaptations is inherently subjective. Different human annotators are likely to have disagreements in alignment construction. With ample resources, employing multiple human annotators and calculating inter-annotator agreement using Cohen's Kappa would provide a more accurate assessment. The inclusion of a third annotator to resolve conflicts would further enhance the quality of annotations and provide insights into the performance of different methods. However, due to limited resources, we did not pursue multiple annotations in this study.

Many of the books and film scripts cannot be distributed in its original form due to copyright issues. This creates a hurdle for future researchers. To address this, upon acceptance of this paper, we will share the code and a step-by-step replication strategy for reproducing the copyright-protected portion of the dataset. This will enable researchers with access to the book and movie script to reproduce the dataset and utilize our annotations.

We employ SBERT embeddings as the similarity metric, which have been trained on a dataset with texts of similar length to our task. Exploring the impact of training a specialized SBERT model on book and movie-specific data could provide further

insights. Computationally more expensive models such as SGPT (Muennighoff, 2022) may provide more accurate similarity measure.

## References

Apoorv Agarwal, Jiehan Zheng, Shruti Kamath, Sri-rankumar Balasubramanian, and Shirin Ann Dey. 2015. Key female characters in film have more to talk about besides men: Automating the bechdel test. In *Proceedings of the 2015 Conference of the North American Chapter of the Association for Computational Linguistics: Human Language Technologies*, pages 830–840.

Stephen F Altschul, Warren Gish, Webb Miller, Eugene W Myers, and David J Lipman. 1990. Basic local alignment search tool. *Journal of molecular biology*, 215(3):403–410.

Dzmitry Bahdanau, Kyunghyun Cho, and Yoshua Bengio. 2014. Neural machine translation by jointly learning to align and translate. *arXiv preprint arXiv:1409.0473*.

Martin Bauml, Makarand Tapaswi, and Rainer Stiefel-hagen. 2013. Semi-supervised learning with constraints for person identification in multimedia data. In *Proceedings of the IEEE Conference on Computer Vision and Pattern Recognition*, pages 3602–3609.

Alison Bechdel. 1986. *Dykes to watch out for*. Firebrand Books.

Spencer Blohm. 2016. *Jane Austen Adaptations Throughout History*. Interesting Literature. <https://interestingliterature.com/2016/03/jane-austen-adaptations-throughout-history/>. Accessed: June 2023.

Tom Brown, Benjamin Mann, Nick Ryder, Melanie Subbiah, Jared D Kaplan, Prafulla Dhariwal, Arvind Neelakantan, Pranav Shyam, Girish Sastry, Amanda Askell, et al. 2020. Language models are few-shot learners. *Advances in neural information processing systems*, 33:1877–1901.

Virginia P Campos, Tiago MU de Araújo, Guido L de Souza Filho, and Luiz MG Gonçalves. 2020. Cinead: a system for automated audio description script generation for the visually impaired. *Universal Access in the Information Society*, 19(1):99–111.

H.R. Cole and J.H. Haag. 2002. *The Complete Guide to Standard Script Formats: Part 1 - Screenplays*. pt. 2. CMC Publishing.

Kelsey Collier. 2017. *5 Movies Based On Books That Are Actually Like the Book*. Odyssey. <https://www.thoodysseyonline.com/5-movies-based-on-books-that-are-actually-like-the-book/>.

Clint Davis. 2018. *Movies that were nothing like the book*. Simplemost. <https://www.simplemost.com/movie-adaptations-that-were-nothing-like-the-book/>.

M Dayhoff, R Schwartz, and B Orcutt. 1978. A model of evolutionary change in proteins. *Atlas of protein sequence and structure*, 5:345–352.

M. Everingham, Josef Sivic, and Andrew Zisserman. 2006. Hello! my name is... buffy” – automatic naming of characters in tv video. In *BMVC*.

Paschalis Frangidis, Konstantinos Georgiou, and Stefanos Papadopoulos. 2020. Sentiment analysis on movie scripts and reviews. In *IFIP International Conference on Artificial Intelligence Applications and Innovations*, pages 430–438. Springer.

Frontier Economics. 2018. *Publishing’s contribution to the wider creative industries*. Frontier Economics Ltd. <https://www.frontier-economics.com/media/2503/publishings-contribution-to-the-wider-creative-industries.pdf>.

Zach Gass. 2019. *10 Movies That Are Surprisingly Book Accurate*. Screen Rant. <https://screenrant.com/movies-surprisingly-book-accurate/>.

Philip Gorinski and Mirella Lapata. 2015. Movie script summarization as graph-based scene extraction. In *Proceedings of the 2015 Conference of the North American Chapter of the Association for Computational Linguistics: Human Language Technologies*, pages 1066–1076.

Project Gutenberg. n.d. [www.gutenberg.org](http://www.gutenberg.org). Accessed: April 2021.

James Harold. 2018. The value of fidelity in adaptation. *The British Journal of Aesthetics*, 58(1):89–100.

HathiTrust Digital Library. n.d. <https://www.hathitrust.org/>.

Walt Hickey. 2014. *The Dollar-And-Cents Case Against Hollywood’s Exclusion of Women*. FiveThirtyEight. <https://fivethirtyeight.com/features/the-dollar-and-cents-case-against-hollywoods-exclusion-of-women/>.

Allen Kim, Charuta Pethe, and Steven Skiena. 2020. What time is it? temporal analysis of novels. In *Proceedings of the 2020 Conference on Empirical Methods in Natural Language Processing (EMNLP)*, pages 9076–9086.

Anne Lambert, Marie Guégan, and Kai Zhou. 2013. Scene reordering in movie script alignment. In *2013 11th International Workshop on Content-Based Multimedia Indexing (CBMI)*, pages 213–218. IEEE.

Ivan Laptev, Marcin Marszalek, Cordelia Schmid, and Benjamin Rozenfeld. 2008. Learning realistic human actions from movies. In *2008 IEEE Conference on Computer Vision and Pattern Recognition*, pages 1–8. IEEE.

Quoc Le and Tomas Mikolov. 2014. Distributed representations of sentences and documents. In *International conference on machine learning*, pages 1188–1196.

Thomas Leitch. 2008. Adaptation studies at a crossroads. *Adaptation*, 1(1):63–77.

- Chao Liang, Changsheng Xu, Jian Cheng, Weiqing Min, and Hanqing Lu. 2012. Script-to-movie: a computational framework for story movie composition. *IEEE transactions on multimedia*, 15(2):401–414.
- Pierre Lison and Raveesh Meena. 2016. Automatic turn segmentation for movie & tv subtitles. In *2016 IEEE Spoken Language Technology Workshop (SLT)*, pages 245–252. IEEE.
- Benjamin F Logan and Larry A Shepp. 1977. A variational problem for random young tableaux. *Advances in mathematics*, 26(2):206–222.
- Victor Martinez, Krishna Somandepalli, Yalda Tehrani-Uhls, and Shrikanth Narayanan. 2020. Joint estimation and analysis of risk behavior ratings in movie scripts. In *Proceedings of the 2020 Conference on Empirical Methods in Natural Language Processing (EMNLP)*, pages 4780–4790, Online. Association for Computational Linguistics.
- Niklas Muennighoff. 2022. Sgpt: Gpt sentence embeddings for semantic search. *arXiv preprint arXiv:2202.08904*.
- Saul B Needleman and Christian D Wunsch. 1970. A general method applicable to the search for similarities in the amino acid sequence of two proteins. *Journal of molecular biology*, 48(3):443–453.
- Tri Nguyen, Mir Rosenberg, Xia Song, Jianfeng Gao, Saurabh Tiwary, Rangan Majumder, and Li Deng. 2016. Ms marco: A human generated machine reading comprehension dataset. In *CoCo@ NIPS*.
- Lasguido Nio, Sakriani Sakti, Graham Neubig, Tomoki Toda, and Satoshi Nakamura. 2014. Conversation dialog corpora from television and movie scripts. In *2014 17th Oriental Chapter of the International Committee for the Co-ordination and Standardization of Speech Databases and Assessment Techniques (COCOSDA)*, pages 1–4. IEEE.
- Elisabeth Österberg. 2018. Adapting the men in jane eyre: A comparative analysis of two movie adaptations (from 1943 and 2011) of the novel jane eyre by charlotte brontë, with a focus on the male characters.
- Seung-Bo Park, Heung-Nam Kim, Hyunsik Kim, and Geun-Sik Jo. 2010. Exploiting script-subtitles alignment to scene boundary detection in movie. In *2010 IEEE International Symposium on Multimedia*, pages 49–56. IEEE.
- Stefan Paun. 2021. Parallel text alignment and monolingual parallel corpus creation from philosophical texts for text simplification. In *Proceedings of the 2021 Conference of the North American Chapter of the Association for Computational Linguistics: Student Research Workshop*, pages 40–46, Online. Association for Computational Linguistics.
- Charuta Pethe, Allen Kim, and Steven Skiena. 2020. Chapter captor: Text segmentation in novels. *arXiv preprint arXiv:2011.04163*.
- Tanzir Pial and Steven Skiena. 2023. GNAT: A General Narrative Alignment Tool. In *Proceedings of the 2023 Conference on Empirical Methods in Natural Language Processing (EMNLP 2023)*. Association for Computational Linguistics.
- Risza Dewi Rahmawati, Imam Basuki, and Hat Pujiati. 2013. Adaptation analysis of harry potter and the half blood prince novel by jk rowling into film by david yates. *Publika Budaya*, 1(1):41–46.
- Anil Ramakrishna, Victor R Martínez, Nikolaos Malandrakis, Karan Singla, and Shrikanth Narayanan. 2017. Linguistic analysis of differences in portrayal of movie characters. In *Proceedings of the 55th Annual Meeting of the Association for Computational Linguistics (Volume 1: Long Papers)*, pages 1669–1678.
- Nils Reimers and Iryna Gurevych. 2019. Sentencebert: Sentence embeddings using siamese bert-networks. In *Proceedings of the 2019 Conference on Empirical Methods in Natural Language Processing*. Association for Computational Linguistics.
- Scott Selisker. 2015. The bechdel test and the social form of character networks. *New Literary History*, 46(3):505–523.
- Amr Shahin and Adam Krzyżak. 2020. Genre-ous: The movie genre detector. In *Asian Conference on Intelligent Information and Database Systems*, pages 308–318. Springer.
- Temple F Smith and Michael S Waterman. 1981. Identification of common molecular subsequences. *Journal of molecular biology*, 147(1):195–197.
- Makarand Tapaswi, Martin Bäuml, and Rainer Stiefelhagen. 2014. Story-based video retrieval in tv series using plot synopses. In *Proceedings of International Conference on Multimedia Retrieval*, pages 137–144.
- Makarand Tapaswi, Martin Bauml, and Rainer Stiefelhagen. 2015. Book2movie: Aligning video scenes with book chapters. In *Proceedings of the IEEE Conference on Computer Vision and Pattern Recognition*, pages 1827–1835.
- Jerome Thevenon, Jesús Martínez del Rincón, Romain Dieny, and Jean-Christophe Nebel. 2012. Dense pixel matching between unrectified and distorted images using dynamic programming. In *VISAPP (2)*, pages 216–224.
- Josh Weiss. 2023. *The Major Differences between 'The lost world: Jurassic Park' and Michael Crichton's Original Novel*. Syfy. <https://www.syfy.com/syfy-wire/the-lost-world-jurassic-park-movie-changes-from-the-novel>.
- WGA. 2023. *WGA Negotiations—Status as of May 1, 2023*. The Writers Guild of America. [https://www.wga.org/uploadedfiles/members/member\\_info/contract-2023/WGA\\_proposals.pdf](https://www.wga.org/uploadedfiles/members/member_info/contract-2023/WGA_proposals.pdf). Accessed: August 2023.
- Adam Yaari, Jan DeWitt, Henry Hu, Bennett Stankovits, Sue Felshin, Yevgeni Berzak, Helena Aparicio, Boris

Katz, Ignacio Cases, and Andrei Barbu. 2022. [The aligned multimodal movie treebank: An audio, video, dependency-parse treebank](#). In *Proceedings of the 2022 Conference on Empirical Methods in Natural Language Processing*, pages 9531–9539, Abu Dhabi, United Arab Emirates. Association for Computational Linguistics.

Yukun Zhu, Ryan Kiros, Rich Zemel, Ruslan Salakhutdinov, Raquel Urtasun, Antonio Torralba, and Sanja Fidler. 2015. Aligning books and movies: Towards story-like visual explanations by watching movies and reading books. In *Proceedings of the IEEE International Conference on Computer Vision (ICCV)*.

## Appendix

### A Manually Annotated Dataset

The six books that were manually annotated are listed in Table A.1. Two graduate students annotated the books. The only requirement for the annotators was that they had read and watched their respective book and film. They did not have any additional expertise related to literature or films. They were given the book units in a spreadsheet where they annotated the units with binary labels. In case of book units which they thought were partially retained, they were instructed beforehand to annotate it as retained if they thought the majority of the content was present in the film. Annotating a book took on average  $\sim 4$  hours.

The HP2 film and book had 116 scenes and 18 chapters respectively. On the other hand, the HP4 film and book had 68 scenes and 37 chapters. Annotating alignment of chapter-scenes for a book-film pair took similar amount of time on average as retention annotation for a book.

### B Complete Dataset

Information about all 40 book-films are listed in Table B.1. Each book-film pair is given a unique ID. The books are ordered lexicographically in the table using their IDs. Information about lengths of the books and the films are additionally provided in Table B.2.

### C Illustrative Example Alignment

In Table C.1 and Table C.2, we show the alignment of a scene from the second Harry Potter film and the film *Room(2015)* with their respective original source novels. It is to be noted that the complete script and book had been aligned for both of them and we extract the particular scene’s alignment to illustrate the following observations:

- In Table C.1, Script paragraph 429 is left unaligned correctly, showing the necessity of gapped alignments and the gap penalties as discussed in Section 3.1.
- Paragraph 430 and 431 are aligned with the same book paragraph, proving the necessity of many-to-many alignment instead of 1-1 alignment, also discussed in Section 3.1.
- In paragraph 438, the screenwriter assigns *Harry* the lines originally attributed to *Ron* in

the book, while also altering the text substantially. Despite this deviation from the original source material, our algorithm adeptly captures the fundamental core of the narrative, wherein a character laments their unequivocal failure to catch the train, and successfully aligns the pertinent textual components.

### D Different Similarity Metrics

For a comparative analysis of SW+SBERT, we use 4 other similarity metrics both for our baseline greedy and SW alignment method. The metrics are described below:

**Jaccard:** The Jaccard index treats text as a bag-of-words and computes the similarity using the multiset of words present in both text segments:

$$J(a, b) = \frac{a \cap b}{a \cup b} \quad (5)$$

**TF-IDF:** The Term Frequency Inverse Document Frequency (TF-IDF) measures text similarity using the frequency of words weighted by the inverse of their presence in the texts, giving more weight to rare words. Here the set of documents is represented by the concatenated set of paragraphs from the book and film script.

**GloVe Mean Embedding:** We represent a text by the average of GloVe<sup>3</sup> embeddings of all the words in the text, using cosine similarity.

**Hamming Distance:** Given two paragraphs containing  $n \geq m$  words, we decompose the longer paragraph into chunks of size  $n/m$ . The Hamming distance  $h(., .)$  is the fraction of chunks where chunk  $i$  does not contain word  $i$  from the shorter text. We then use  $1 - h(., .)$  as the similarity score.

### E Faithfulness Labels for Film Adaptations

From different online reviews by critics, we compiled faithfulness labels for 18 film adaptations based on how faithful they were to their original novel. We only assigned labels when a critic review unambiguously described the film as either faithful or unfaithful. For example, for the film *Anna Karenina (2012)*, a review<sup>4</sup> describes the film as "largely faithful" but then goes on writing

<sup>3</sup><https://nlp.stanford.edu/projects/glove/>

<sup>4</sup><https://creativeeccentric.wordpress.com/2013/01/21/>

ID	Book (Year)	Author	Film Adaptation (Year)	Film Length (Minutes)	No. of Book Units	Human Annotation Retention%
HP2	Harry Potter and The Chamber of Secrets	J. K. Rowling	Harry Potter and The Chamber of Secrets (2002)	161	759	59.5
HP4	Harry Potter and The Goblet of Fire	J. K. Rowling	Harry Potter and The Goblet of Fire (2005)	157	1400	27.6
HP7P1	Harry Potter and The Deathly Hallows	J. K. Rowling	Harry Potter and The Deathly Hallows Part 1 (2010)	146	1605	40.3
HP7P2	Harry Potter and The Deathly Hallows	J. K. Rowling	Harry Potter and The Deathly Hallows Part 2 (2011)	130	1605	24.7
PP	Pride and Prejudice	Jane Austen	Pride and Prejudice (2005)	127	498	48.6
PB	The Princess Bride	William Goldman	The Princess Bride (1987)	98	677	55.8

Table A.1: Data on the six book-script pairs whose books units are manually annotated as removed or retained. Additionally we create manual alignment of HP2 and HP4 book chapters with their movie scenes.

- *"The book is just short of 350,000 words so many choices had to be made."* discussed in Section 6.4 are presented in Table F.1.
- *"effectively trims a significant portion of the book"*
- *"leaves out entire characters."*
- *"stays clear of Tolstoy's long discussions of Russian contemporary issues and the inner spiritual reflections of the characters."*

For such reviews, we opted not to create a label and denote it by the ? symbol in Table E.1.

## F Data for Bechdel Test

We combine three different sources to get the Bechdel test result for films in our dataset.

- For the film, *Dr. Jekyll and Mr. Hyde (1941)* we get the Bechdel test result from [https://h2g2.com/edited\\_entry/A87926584](https://h2g2.com/edited_entry/A87926584).
- For the films *The Wonderful Wizard of Oz (2011)* and *M\*A\*S\*H (1970)*, we use data from <https://lissashea.com/>.
- Hickey (2014) compiled a dataset<sup>5</sup> using the data from <https://bechdeltest.com> where Bechdel test results of films are stored by users. We intersected our dataset with theirs to get the result for the other 23 films.

The Bechdel test results, Bechdel, female and male representation ratios computed by our algorithm as

<sup>5</sup><https://github.com/fivethirtyeight/data/blob/master/bechdel/movies.csv>

ID	Book Name	Book Year	Author	Film Name	Film Year	Genre
AD	Do Androids Dream of Electric Sheep	1968	Philip K Dick	Blade Runner	1982	Sci-fi
AK	Anna Karenina	1878	Leo Tolstoy	Anna Karenina	2012	Romance
BF	Big Fish: A Novel of Mythic Proportions	1998	Daniel Wallace	Big Fish	2003	Fantasy
BS	The Bourne Supremacy	1986	Robert Ludlum	The Bourne Supremacy	2004	Thriller
DU	Dune	1965	Frank Herbert	Dune	1984	Sci-fi
EM	Emma	1885	Jane Austen	Emma	1996	Romance
EP	The English Patient	1992	Michael Ondaatje	The English Patient	1996	Romance
FF	Far From The Madding Crowd	1874	Thomas Hardy	Far from the Madding Crowd	2015	Romance
FR	The Fellowship of the Ring	1954	J. R. R. Tolkien	LOTR: The Fellowship of the Ring	2001	Fantasy
FS	Frankenstein; or, The Modern Prometheus	1818	Mary Shelley	Mary Shelley's Frankenstein	1994	Horror
GA	The Getaway	1958	Jim Thompson	The Getaway	1972	Thriller
GC	Get Carter 1 - Jack's Return Home	1970	Ted Lewis	Get Carter	1971	Thriller
GW	The Grapes of Wrath	1939	John Steinbeck	The Grapes of Wrath	1940	Drama
HB	The Hellbound Heart	1986	Clive Barker	Hellraiser	1987	Horror
HG	Hitchhiker's Guide to the Galaxy	1979	Douglas Adams	The Hitchhiker's Guide to the Galaxy	2005	Sci-fi
HH	The Haunting of Hill House	1959	Shirley Jackson	The Haunting	1999	Horror
HO	MASH: A Novel About Three Army Doctors	1968	Richard Hooker	M*A*S*H	1970	Comedy
HP2	Harry Potter and the Chamber of Secrets	1998	JK Rowling	Harry Potter and the Chamber of Secrets	2002	Fantasy
HP4	Harry Potter and the Goblet of Fire	2000	JK Rowling	Harry Potter and the Goblet of Fire	2005	Fantasy
HP7P1	Harry Potter and the Deathly Hallows	2007	JK Rowling	Harry Potter and the Deathly Hallows	2010	Fantasy
HP7P2	Harry Potter and the Deathly Hallows	2007	JK Rowling	Harry Potter and the Deathly Hallows	2011	Fantasy
IM	The Iron Man	1968	Ted Hughes	The Iron Giant	1999	Animation
JH	Strange Case of Dr Jekyll and Mr Hyde	1886	Robert Louis Stevenson	Dr. Jekyll and Mr. Hyde	1941	Sci-fi
KM	All the King's Men	1946	Robert Penn Warren	All the King's Men	1949	Drama
LS	I Know What You Did Last Summer	1973	Lois Duncan	I Know What You Did Last Summer	1997	Horror
LW	The Lost World	1995	Michael Crichton	The Lost World: Jurassic Park	1997	Sci-fi
MK	The Three Musketeers	1844	Alexandre Dumas	The Three Musketeers	1993	Action
NH	The Night of the Hunter	1953	Davis Grubb	The Night of the Hunter	1955	Drama
NL	Nothing Lasts Forever	1979	Roderick Thorp	Die Hard	1988	Thriller
PB	The Princess Bride	1973	William Goldman	The Princess Bride	1987	Comedy
PO	The Phantom of the Opera	1910	Gaston Leroux	The Phantom of the Opera	2004	Romance
PP	Pride and Prejudice	1813	Jane Austen	Pride and Prejudice	2005	Romance
RK	The Return of the King	1955	J. R. R. Tolkien	LOTR: The Return of the King	2003	Fantasy
RO	Room	2010	Emma Donoghue	Room	2015	Thriller
RR	Revolutionary Road	1961	Richard Yates	Revolutionary Road	2008	Romance
TG	The Grifters	1963	Jim Thompson	The Grifters	1990	Thriller
TM	The Time Machine	1895	H. G. Wells	The Time Machine	1960	Sci-fi
TR	The Road	2006	Cormac McCarthy	The Road	2009	Thriller
TT	The Two Towers	1954	J. R. R. Tolkien	LOTR: The Two Towers	2002	Fantasy
WW	The Wonderful Wizard of Oz	1900	Lyman Frank Baum	The Wizard of Oz	1939	Fantasy

Table B.1: Complete dataset of 40 book and film adaptations with their IDs listed.

Table B.2: Length information of all book-films. A page is estimated to have 300 words.

<b>ID</b>	<b>Book Length (In Pages)</b>	<b>Script Length (In Pages)</b>	<b>Film Length (In Minutes)</b>	<b>No. of Script Paragraphs</b>	<b>No. of Book Paragraphs</b>	<b>Reten- tion %</b>
AD	243	79	117	1630	1818	61.3
AK	1264	93	130	2126	7402	22.1
BF	152	86	125	1926	1063	71.6
BS	851	75	108	1980	6784	27.3
DU	768	80	155	1516	7842	14.1
EM	575	49	124	1601	2285	91.7
EP	299	103	162	1725	1611	73.5
FF	496	72	119	2696	3471	68.7
FR	685	80	137	1708	4141	43.1
FS	261	100	123	1780	778	69.1
GA	187	83	122	1809	1403	65.4
GC	265	52	112	1340	3442	38.7
GW	762	86	129	1464	5884	18.9
HB	110	66	93	1784	1107	69.8
HG	175	81	110	1923	2023	56
HH	261	99	114	1798	1642	73
HO	228	100	116	1643	2255	47.4
HP2	316	94	161	2278	3116	84.3
HP4	706	44	157	2780	5994	34.8
HP7P1	726	102	146	2196	6778	46.9
HP7P2	726	105	130	2377	6778	33.8
IM	36	62	87	1438	279	70.2
JH	145	109	98	3998	2090	72.2
KM	809	75	110	1820	4616	26.4
LS	198	39	101	848	1644	40.2
LW	467	108	129	2719	14456	13.8
MK	837	93	105	3378	8132	29.3
NH	267	80	92	2217	2483	68
NL	234	88	131	1887	1567	74.9
PB	332	74	98	2028	2876	56.1
PO	304	118	143	1723	2371	60.6
PP	443	85	127	1662	2065	89.4
RK	493	100	201	2344	2492	81.2
RO	361	75	118	2273	5036	31
RR	384	57	119	1436	1614	64
TG	182	75	110	1556	1650	63.4
TM	116	80	96	1408	2021	51.1
TR	214	83	111	1403	1957	62.3
TT	570	128	179	3834	2876	79.8
WW	204	108	101	2061	1665	72.9



Table C.1: Alignment of the scene where Harry and Ron misses the train to Hogwarts in HP2.

Script Paragraph #	Script Paragraph	Aligned Book Paragraph
428	MRS. WEASLEY (O.S.) Come, Ginny. We'll get you a seat.	I'll take Ginny and you two come right after us ,' Mrs Weasley told Harry and Ron, grabbing Ginny's hand and setting off . In the blink of an eye they were gone.
429	32B INT. KING'S CROSS 32B	
430	Ron glances at the clock.	Let's go together, we've only got a minute ,' Ron said to Harry. Let's go together, we've only got a minute ,' Ron said to Harry.
431	RON We better hurry.	
432	Harry nods, leans into his trolley and – CRASH! – hits the barrier and bounces back into Ron. A GUARD glowers.	Harry made sure that Hedwig's cage was safely wedged on top of his trunk and wheeled his trolley about to face the barrier . He felt perfectly confident; this wasn't nearly as uncomfortable as using Floo powder . Both of them bent low over the handles of their trolleys and walked purposefully towards the barrier, gathering speed . A few feet away from it, they broke into a run and CRASH . ASH.
433	GUARD What in blazes d'you two think you're doing?	Both trolleys hit the barrier and bounced backwards . Ron's trunk fell off with a loud thump, Harry was knocked off his feet, and Hedwig's cage bounced onto the shiny floor and she rolled away, shrieking indignantly . People all around them stared and a guard nearby yelled ,' What in blazes d'you think you're doing? '
434	HARRY Sorry. Lost control of the trolley.	Lost control of the trolley ,' Harry gasped, clutching his ribs as he got up . Ron ran to pick up Hedwig, who was causing such a scene that there was a lot of muttering about cruelty to animals from the surrounding crowd.
435	(to Ron) Why can't we get through?	Why can't we get through?' Harry hissed to Ron.
436	RON I dunno. The gateway's sealed itself for some reason.	We're going to miss the train ,' Ron whispered .' I don't understand why the gateway's sealed itself ...' Harry looked up at the giant clock with a sickening feeling in the pit of his stomach.
437	As Ron presses his ear to the barrier, the CLOCK CHIMES.	Ten seconds...nine seconds...He wheeled his trolley forward cautiously until it was right against the barrier, and pushed with all his might.
438	HARRY The train leaves at exactly eleven o'clock. We've missed it.	Three seconds...two seconds...one second ...' It's gone ,' said Ron, sounding stunned.
439	RON Can't hear a thing.	The Dursleys haven't given me pocket money for about six years .' Ron pressed his ear to the cold barrier . '
440	(a sudden thought) Harry. If we can't get through, maybe Mum and Dad can't get back.	What're we going to do? I don't know how long it'll take Mum and Dad to get back to us .' They looked around.
441	HARRY Maybe we should go wait by the car.	I think we'd better go and wait by the car ,' said Harry . We're attracting too much attention .' Harry!
442	RON The car!	said Ron, his eyes gleaming .' The car!' ' What about it?' ' We can fly the car to Hogwarts!

Table C.2: Aligning the scene depicting *Jack* feigning death in front of his captor, *Old Nick*, in the film *Room* (2015) with its source book.

Script Paragraph #	Script Paragraph	Book Paragraph
833	The door beeps, and Ma rolls Jack up, very fast. We're in the dark with him, the rug pressing close.	Beep beep.
834	Sound of Old Nick stepping in. Proud of himself.	" Here you go . " That's Old Nick's voice . He sounds like always . He doesn't even know what's happened about me dying . " Antibiotics, only just past the sell - by . For a kid you break them in half, the guy said . " Ma doesn't answer . " " Here you go . " That's Old Nick's voice . He sounds like always . He doesn't even know what's happened about me dying . "
835	OLD NICK (O.S.) Antibiotics.	Antibiotics, only just past the sell - by . For a kid you break them in half, the guy said . " Ma doesn't answer . "
836	The door shuts with a boom.	
837	OLD NICK (O.S.) (CONT'D) Are you nuts, wrapping a sick kid up in that?	
838	Ma's voice is very close because she's bent over the rug.	Is he in the rug?
839	MA (O.S.) He got worse in the night.	He got worse in the night and this morning he wouldn't wake up . " Nothing.
840	She waits, giving Old Nick time to figure it out.	Then Old Nick makes a funny sound . " Are you sure? "
841	In the rug, Jack lies frozen except for his flickering eyes.	" Am I sure? " Ma shrieks it, but I don't move, I don't move, I'm all stiff no hearing no seeing no nothing.

ID	Movie	Faithfulness Source	Faithful	Retention %
LW	The Lost World: Jurassic Park (1997)	<a href="https://www.simplemost.com/movie-adaptations-that-were-nothing-like-the-book/">https://www.simplemost.com/movie-adaptations-that-were-nothing-like-the-book/</a>	×	13.8
DU	Dune (1984)	<a href="https://www.simplemost.com/movie-adaptations-that-were-nothing-like-the-book/">https://www.simplemost.com/movie-adaptations-that-were-nothing-like-the-book/</a>	×	14.1
AK	Anna Karenina (2012)	<a href="https://creativeeccentric.wordpress.com/2013/01/21/">https://creativeeccentric.wordpress.com/2013/01/21/</a>	?	22.1
KM	All the King's Men (1949)	<a href="https://www.simplemost.com/movie-adaptations-that-were-nothing-like-the-book/">https://www.simplemost.com/movie-adaptations-that-were-nothing-like-the-book/</a>	×	26.4
BS	The Bourne Supremacy (2004)	<a href="https://www.simplemost.com/movie-adaptations-that-were-nothing-like-the-book/">https://www.simplemost.com/movie-adaptations-that-were-nothing-like-the-book/</a>	×	27.3
MK	The Three Musketeers (1993)	<a href="https://www.nytimes.com/1993/11/12/movies/reviews-film-once-more-into-the-fray-for-athos-porthos-et-al.html">https://www.nytimes.com/1993/11/12/movies/reviews-film-once-more-into-the-fray-for-athos-porthos-et-al.html</a>	×	29.3
HP7P2	Harry Potter 7 Part 2 (2011)	<a href="https://screenrant.com/harry-potter-most-accurate-movies-based-books/">https://screenrant.com/harry-potter-most-accurate-movies-based-books/</a>	?	33.8
HP4	Harry Potter 4 (2005)	<a href="https://screenrant.com/harry-potter-most-accurate-movies-based-books/">https://screenrant.com/harry-potter-most-accurate-movies-based-books/</a>	?	34.8
LS	I Know What You Did Last Summer (1997)	<a href="https://www.kentuckypress.com/9780813136554/the-philosophy-of-horror/">https://www.kentuckypress.com/9780813136554/the-philosophy-of-horror/</a>	×	40.2
FR	LOTR: The Fellowship of the Ring (2001)	<a href="https://screenrant.com/movies-surprisingly-book-accurate/#the-lord-of-the-rings">https://screenrant.com/movies-surprisingly-book-accurate/#the-lord-of-the-rings</a>	✓	43.1
HP7P1	Harry Potter 7 Part 1 (2010)	<a href="https://screenrant.com/harry-potter-most-accurate-movies-based-books">https://screenrant.com/harry-potter-most-accurate-movies-based-books</a>	?	46.9
AD	Blade Runner (1982)	<a href="https://www.simplemost.com/movie-adaptations-that-were-nothing-like-the-book/">https://www.simplemost.com/movie-adaptations-that-were-nothing-like-the-book/</a>	×	61.3
TG	The Grifters (1990)	<a href="https://www.cbr.com/movies-like-original-book/">https://www.cbr.com/movies-like-original-book/</a>	✓	63.4
FS	Mary Shelley's Frankenstein (1994)	<a href="https://collider.com/mary-shelleys-frankenstein-adaptation/">https://collider.com/mary-shelleys-frankenstein-adaptation/</a>	✓	69.1
IM	The Iron Giant (1999)	<a href="https://www.indiewire.com/features/general/5-things-you-might-not-know-about-brad-birds-the-iron-giant-107519/">https://www.indiewire.com/features/general/5-things-you-might-not-know-about-brad-birds-the-iron-giant-107519/</a>	×	70.2
WW	The Wizard of Oz (1939)	<a href="https://collider.com/book-to-film-adaptations-not-like-the-books/">https://collider.com/book-to-film-adaptations-not-like-the-books/</a>	×	72.9
NL	Die Hard (1988)	<a href="https://collider.com/movies-nothing-like-book">https://collider.com/movies-nothing-like-book</a>	×	74.9
TT	LOTR: The Two Towers (2002)	<a href="https://screenrant.com/movies-surprisingly-book-accurate/">https://screenrant.com/movies-surprisingly-book-accurate/</a>	✓	79.8
RK	LOTR: The Return of the King (2003)	<a href="https://screenrant.com/movies-surprisingly-book-accurate/">https://screenrant.com/movies-surprisingly-book-accurate/</a>	✓	81.2
HP2	Harry Potter 2 (2002)	<a href="https://www.theodysseyonline.com/5-movies-based-on-books-that-are-actually-like-the-book">https://www.theodysseyonline.com/5-movies-based-on-books-that-are-actually-like-the-book</a>	✓	84.3
PP	Pride and Prejudice (2005)	<a href="https://interestingliterature.com/2016/03/jane-austen-adaptations-throughout-history/">https://interestingliterature.com/2016/03/jane-austen-adaptations-throughout-history/</a>	✓	89.4
EM	Emma (1996)	<a href="https://interestingliterature.com/2016/03/jane-austen-adaptations-throughout-history/">https://interestingliterature.com/2016/03/jane-austen-adaptations-throughout-history/</a>	✓	91.7

Table E.1: Faithfulness of 18 film adaptations have 0.65 Spearman correlation with retention percentage computed by SW+SBERT. For four film adaptations, the reviews were not deemed to be convincing enough to label the films as faithful or unfaithful, denoted by the ? symbol in the Faithful column.

Table F.1: A book/script with a Bechdel ratio  $b > 1$  is a good predictor of the official Bechdel test, correctly predicting 17/26 films.

ID	Book/Film Name	Female Representation Ratio	Male Representation Ratio	Bechdel Representation Ratio	Bechdel Test	SW+SBERT Prediction Correctness
HO	Mash	0.767	1.052	0.711	Pass	×
PB	The Princess Bride	0.805	1.036	0.85	Fail	✓
HP7P2	Harry Potter 7 Part 2	0.822	1.065	0.852	Fail	✓
BF	Big Fish	0.93	1.015	0.913	Fail	✓
KM	All the King's Men	0.951	1.037	0.95	Fail	✓
NL	Nothing Lasts Forever	0.963	1.023	0.902	Fail	✓
HP4	Harry Potter 4	0.963	1.011	0.93	Fail	✓
FR	The Fellowship of the Ring	0.998	1	0.992	Fail	✓
PP	Pride and Prejudice	1	1	0.998	Pass	×
EM	Emma	1.001	0.998	1.001	Pass	✓
RR	Revolutionary Road	1.011	0.993	1.003	Pass	✓
LS	I Know What You Did Last Summer	1.013	0.973	1.016	Pass	✓
WW	The Wonderful Wizard of Oz	1.017	0.969	1.011	Pass	✓
HH	The Haunting of Hill House	1.017	0.967	1.02	Pass	✓
AK	Anna Karenina	1.02	0.987	1.026	Fail	×
RK	The Return of the King	1.035	0.997	1.03	Fail	×
FS	Frankenstein	1.035	0.984	1.034	Fail	×
FF	Far From The Madding Crowd	1.048	0.967	1.045	Pass	✓
HB	The Hellbound Heart	1.064	0.925	1.048	Pass	✓
TG	The Grifters	1.08	0.952	1.08	Pass	✓
AD	Androids Dream of Electric Sheep	1.084	0.974	1.071	Fail	×
GC	Get Carter (Jack's Return Home)	1.116	0.952	1.078	Fail	×
PO	The Phantom of the Opera	1.116	0.953	1.113	Fail	×
HP7P1	Harry Potter 7 Part 1	1.117	0.957	1.068	Pass	✓
JH	Dr. Jekyll and Mr. Hyde	1.14	0.994	1.13	Pass	✓