

# LAB vs. PRODUCTION

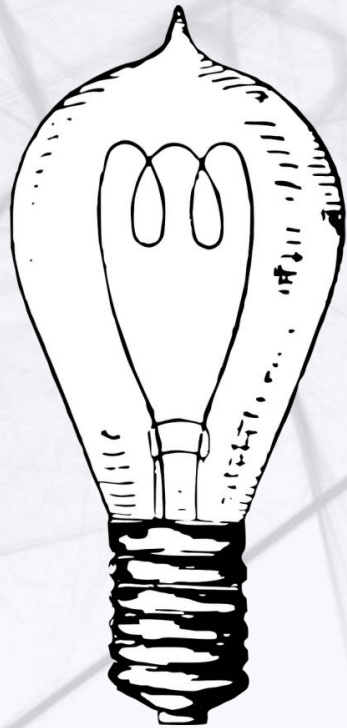
## Two Approaches to Productivity Evaluation for MTPE for LSPs



**ELENA MURGOLO**

**MT Summit | 16 August 2021**

# ABOUT US



# LSP

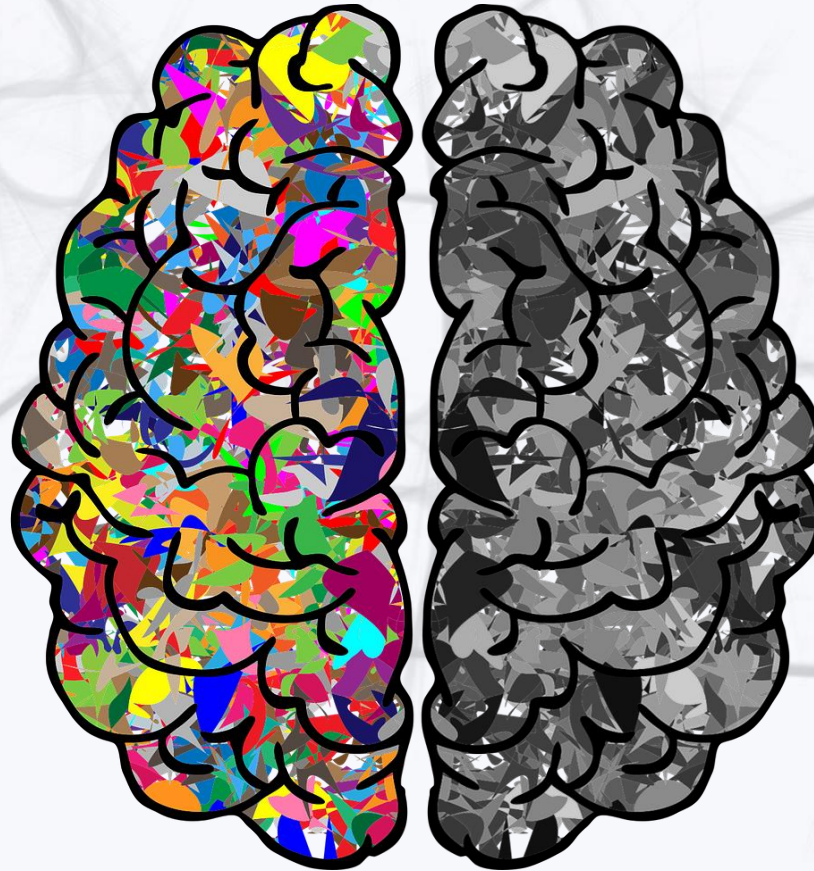
AGLATECH14

# MT IN AGLATECH14

## Trained Engines

Trained with our data

- EN-IT Patent
- DE-IT Patent



## Generic Engines

Online Providers

PRO versions

AGLATECH14

# MT IN AGLATECH14



## CAT tools connectors

All tests were designed to be carried out in CAT tool environment

AGLATECH14

# MT QUALITY

## PRODUCTIVITY

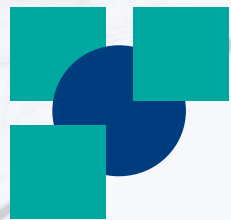
For a better cooperation  
between LSPs and  
freelancers, PE needs to be  
**advantageous for both sides**  
in terms of **time** and **money**

AGLATECH | 4



# PT TESTS

1. Lab Tests
2. Production Tests



Trados

AGLATECH14



Quality

# PT TESTS

## QUALITIVITY EXPORT

Project Name	Document Name	Segment ID	Original Origin System	Start Date	Stop Date	Active Seconds	Active Milliseconds	Word Count	EM	Comments
Test FR - IP Sx1	Test FR - IP Studi TecnicaOperatoria.docx.sdlxl	2	MT	2021-05-24 14:2	2021-05-24 14:2	3	3391	5	0%	
Test FR - IP Sx2	Test FR - IP Studi TecnicaOperatoria.docx.sdlxl	3	HT	2021-05-24 14:2	2021-05-24 14:3	170	170785	24	7,10%	
Test FR - IP Sx1	Test FR - IP Studi TecnicaOperatoria.docx.sdlxl	3	HT	2021-05-24 14:3	2021-05-24 14:3	4	4103		0,00%	
Test FR - IP Sx2	Test FR - IP Studi TecnicaOperatoria.docx.sdlxl	3	HT	2021-05-24 14:3	2021-05-24 14:3	4	4103		7,20%	
Test FR - IP Sx1	Test FR - IP Studi TecnicaOperatoria.docx.sdlxl	3	HT	2021-05-24 14:4	2021-05-24 14:4	5	5778		7,87%	
Test FR - IP Sx2	Test FR - IP Studi TecnicaOperatoria.docx.sdlxl	3	HT	2021-05-24 14:4	2021-05-24 14:4	5	5778		0,00%	
Test FR - IP Sx1	Test FR - IP Studi TecnicaOperatoria.docx.sdlxl	4	HT	2021-05-24 14:3	2021-05-24 14:3	0	3	39	3,50%	
Test FR - IP Sx2	Test FR - IP Studi TecnicaOperatoria.docx.sdlxl	4	HT	2021-05-24 14:3	2021-05-24 14:3	0	3	39	0,00%	
Test FR - IP Sx1	Test FR - IP Studi TecnicaOperatoria.docx.sdlxl	4	HT	2021-05-24 14:3	2021-05-24 14:3	95	95467		5,61%	
Test FR - IP Sx2	Test FR - IP Studi TecnicaOperatoria.docx.sdlxl	4	HT	2021-05-24 14:3	2021-05-24 14:3	95	95467		3,25%	
Test FR - IP Sx1	Test FR - IP Studi TecnicaOperatoria.docx.sdlxl	5	MT	2021-05-24 14:3	2021-05-24 14:3	16	16636	20	3,83%	
Test FR - IP Sx2	Test FR - IP Studi TecnicaOperatoria.docx.sdlxl	5	MT	2021-05-24 14:3	2021-05-24 14:3	16	16636	20	0,00%	
Test FR - IP Sx1	Test FR - IP Studi TecnicaOperatoria.docx.sdlxl	6	MT	2021-05-24 14:3	2021-05-24 14:3	66	66106	29	3,18%	
Test FR - IP Sx2	Test FR - IP Studi TecnicaOperatoria.docx.sdlxl	6	MT	2021-05-24 14:3	2021-05-24 14:3	66	66106	29	0,00%	
Test FR - IP Sx1	Test FR - IP Studi TecnicaOperatoria.docx.sdlxl	7	HT	2021-05-24 14:3	2021-05-24 14:3	72	72895	27	3,63%	
Test FR - IP Sx2	Test FR - IP Studi TecnicaOperatoria.docx.sdlxl	7	HT	2021-05-24 14:3	2021-05-24 14:3	72	72895	27	0,00%	
Test FR - IP Sx1	Test FR - IP Studi TecnicaOperatoria.docx.sdlxl	8	MT	2021-05-24 14:3	2021-05-24 14:3	79	79013	37	0,00%	
Test FR - IP Sx2	Test FR - IP Studi TecnicaOperatoria.docx.sdlxl	8	MT	2021-05-24 14:3	2021-05-24 14:3	79	79013	37	3,44%	
Test FR - IP Sx1	Test FR - IP Studi TecnicaOperatoria.docx.sdlxl	8	MT	2021-05-24 14:3	2021-05-24 14:4	18	18788		0,00%	
Test FR - IP Sx2	Test FR - IP Studi TecnicaOperatoria.docx.sdlxl	8	MT	2021-05-24 14:3	2021-05-24 14:4	18	18788		3,85%	
Test FR - IP Sx1	Test FR - IP Studi TecnicaOperatoria.docx.sdlxl	8	MT	2021-05-24 14:4	2021-05-24 14:4	3	3333		3,83%	
Test FR - IP Sx2	Test FR - IP Studi TecnicaOperatoria.docx.sdlxl	8	MT	2021-05-24 14:4	2021-05-24 14:4	3	3333		3,05%	
Test FR - IP Sx1	Test FR - IP Studi TecnicaOperatoria.docx.sdlxl	9	HT	2021-05-24 14:4	2021-05-24 14:4	222	222868	62	1,70%	
Test FR - IP Sx2	Test FR - IP Studi TecnicaOperatoria.docx.sdlxl	9	HT	2021-05-24 14:4	2021-05-24 14:4	222	222868	62	0,00%	
Test FR - IP Sx1	Test FR - IP Studi TecnicaOperatoria.docx.sdlxl	9	HT	2021-05-24 14:4	2021-05-24 14:4	1	1846		0,00%	
Test FR - IP Sx2	Test FR - IP Studi TecnicaOperatoria.docx.sdlxl	9	HT	2021-05-24 14:4	2021-05-24 14:4	1	1846		1,91%	
Test FR - IP Sx1	Test FR - IP Studi TecnicaOperatoria.docx.sdlxl	9	HT	2021-05-24 15:5	2021-05-24 15:5	10	10545		0,00%	
Test FR - IP Sx2	Test FR - IP Studi TecnicaOperatoria.docx.sdlxl	9	HT	2021-05-24 15:5	2021-05-24 15:5	10	10545		0,00%	
Test FR - IP Sx1	Test FR - IP Studi TecnicaOperatoria.docx.sdlxl	10	MT	2021-05-24 14:4	2021-05-24 14:4	13	13511	15	0,00%	
Test FR - IP Sx2	Test FR - IP Studi TecnicaOperatoria.docx.sdlxl	10	MT	2021-05-24 14:4	2021-05-24 14:4	13	13511	15	0,00%	
Test FR - IP Sx1	Test FR - IP Studi TecnicaOperatoria.docx.sdlxl	10	MT	2021-05-24 14:4	2021-05-24 14:4	14	14672		0,00%	
Test FR - IP Sx2	Test FR - IP Studi TecnicaOperatoria.docx.sdlxl	10	MT	2021-05-24 14:4	2021-05-24 14:4	14	14672		3,98%	
Test FR - IP Sx1	Test FR - IP Studi TecnicaOperatoria.docx.sdlxl	11	MT	2021-05-24 14:4	2021-05-24 14:4	11	11500	7	7,64%	
Test FR - IP Sx2	Test FR - IP Studi TecnicaOperatoria.docx.sdlxl	11	MT	2021-05-24 14:4	2021-05-24 14:4	11	11500	7	0,00%	
Test FR - IP Sx1	Test FR - IP Studi TecnicaOperatoria.docx.sdlxl	11	MT	2021-05-24 14:4	2021-05-24 14:4	5	5676		5,82%	
Test FR - IP Sx2	Test FR - IP Studi TecnicaOperatoria.docx.sdlxl	11	MT	2021-05-24 14:4	2021-05-24 14:4	5	5676		0,00%	
Test FR - IP Sx1	Test FR - IP Studi TecnicaOperatoria.docx.sdlxl	11	MT	2021-05-24 14:4	2021-05-24 14:4	0	488		3,20%	
Test FR - IP Sx2	Test FR - IP Studi TecnicaOperatoria.docx.sdlxl	11	MT	2021-05-24 14:4	2021-05-24 14:4	0	488		3,50%	
Test FR - IP Sx1	Test FR - IP Studi TecnicaOperatoria.docx.sdlxl	12	HT	2021-05-24 14:4	2021-05-24 14:4	15	15171	6	0,00%	
Test FR - IP Sx2	Test FR - IP Studi TecnicaOperatoria.docx.sdlxl	12	HT	2021-05-24 14:4	2021-05-24 14:4	15	15171	6	2,82%	
Test FR - IP Sx1	Test FR - IP Studi TecnicaOperatoria.docx.sdlxl	12	HT	2021-05-24 14:4	2021-05-24 14:4	2	2941		3,10%	
Test FR - IP Sx2	Test FR - IP Studi TecnicaOperatoria.docx.sdlxl	12	HT	2021-05-24 14:4	2021-05-24 14:4	2	2941		0,00%	
Test FR - IP Sx1	Test FR - IP Studi TecnicaOperatoria.docx.sdlxl	12	HT	2021-05-24 14:4	2021-05-24 14:4	1	1211		7,78%	
Test FR - IP Sx2	Test FR - IP Studi TecnicaOperatoria.docx.sdlxl	12	HT	2021-05-24 14:4	2021-05-24 14:4	1	1211		3,83%	

# 1. LAB PT TESTS

AGLATECH14



# LAB PT TESTS

Not real

Conditions of the test are not 'normal' translating conditions



AGLATECH14

- No TMs
- No TBs
- Quality plugin active

- Fixed time to complete –  
Depending on length of text
- Paid per hour instead of per  
word



# LAB PT TESTS

Not real

Conditions of the test are not 'normal' translating conditions



- Text(s) created ad hoc – Combination of subject matters and characteristics needing testing
- 3000 to 4000 words

AGLATECH14

# LAB PT TESTS

Not real

Conditions of the test are not 'normal' translating conditions



- All work on the same project
- At least 3
- Experience in PE
- SME
- Tech-savvy

AGLATECH14

# LAB PT TESTS

## WHY?

- Prevention – Clients are not yet asking for PE but might
- New translation field – not enough PE orders coming in yet
- Short DL – Test needs to be carried out relatively quickly
  - Focus on specific characteristics to be tested

AGLATECH 14

**LAB PT TESTS**

**EXAMPLE**

AGLATECH14

# LAB PT TESTS

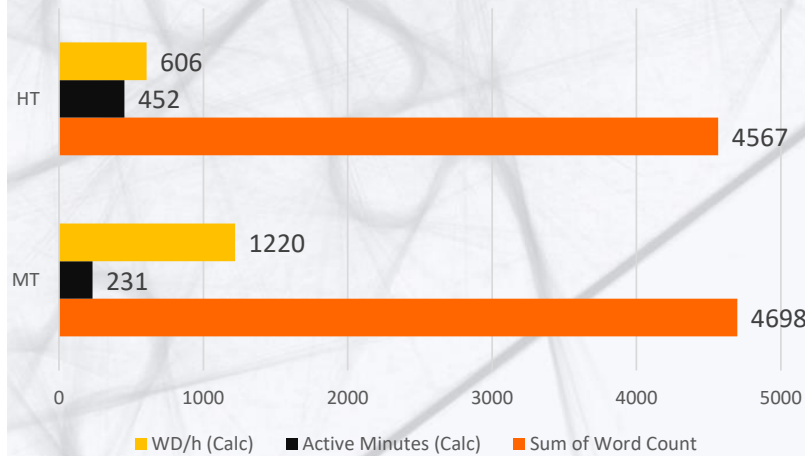
## TEST SETUP

Testing data	
Total test hours	12
Hours each PE	4
Total Words	3.632
MT Engine(s)	Generic MT

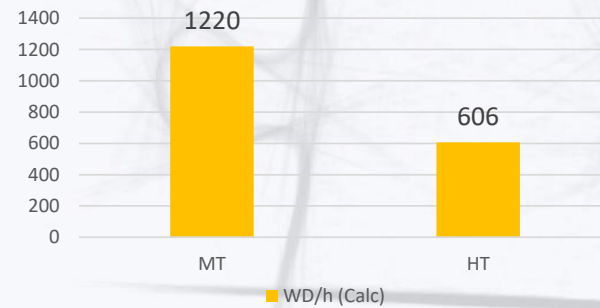
	Subject Matters	# words	Total # words
Total words	Surgical Instruction	823	3.632
	Clinical Study	2.809	
HT words	Surgical Instruction	418	1.825
	Clinical Study	1.407	
MT words	Surgical Instruction	405	1.807
	Clinical Study	1.402	

# LAB PT TESTS

## TEST RESULTS



Words per Hour



**Productivity difference MT vs HT:  
90%**

**Productivity difference MT vs HT:  
97%**

**Productivity difference MT vs HT:  
126%**

**Productivity difference MT vs HT:  
101%**

AGLATECH | 4

**2.**

# **PRODUCTION PT TESTS**

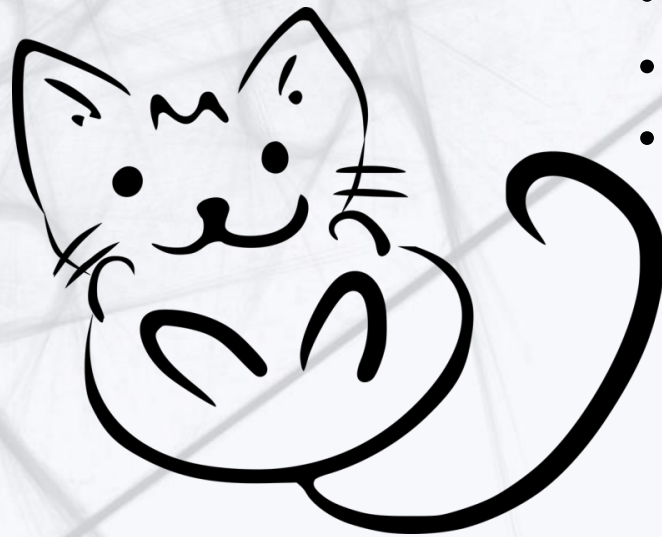
AGLATECH14



# PRODUCTION PT TESTS

Totally real

Conditions of the test are normal translating conditions



AGLATECH14

- TMs – Main + Project
- TBs
- Quality plugin active

- Time to complete according to client DL
- Paid as usual per HT word



# PRODUCTION PT TESTS

Totally real

Conditions of the test are normal translating conditions



- Production Texts – Actual orders received from clients
- Any number of words – Depends on client's orders
- Extra review

AGLATECH 14

# PRODUCTION PT TESTS

Totally real

Conditions of the test are normal translating conditions



- Each works on different texts
- At least 3
- Experience in PE
- SME
- Tech-savvy
- Rate

AGLATECH | 4

# PRODUCTION PT TESTS

## WHY?

- Response – Clients asking for PE in new domains/languages
- Accurate representation – On actual texts in real conditions
  - Broader Spectrum – More varied cases
    - Budget saving

**PRODUCTION PT TESTS**

**EXAMPLE**

AGLATECH14

# PRODUCTION PT TESTS

## TEST SETUP

Subject Matters	
Materials Science	3
Industrial Processes	2
Medical Devices	1
Pharmaceutics	2
Chemistry	1
Mechanics	1
Electronics and Electrotechnics	2

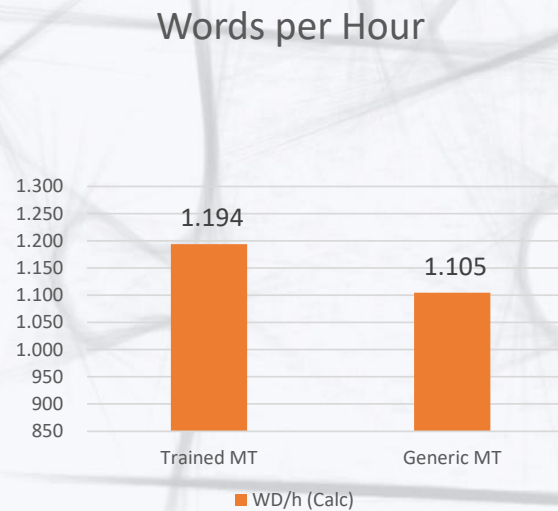
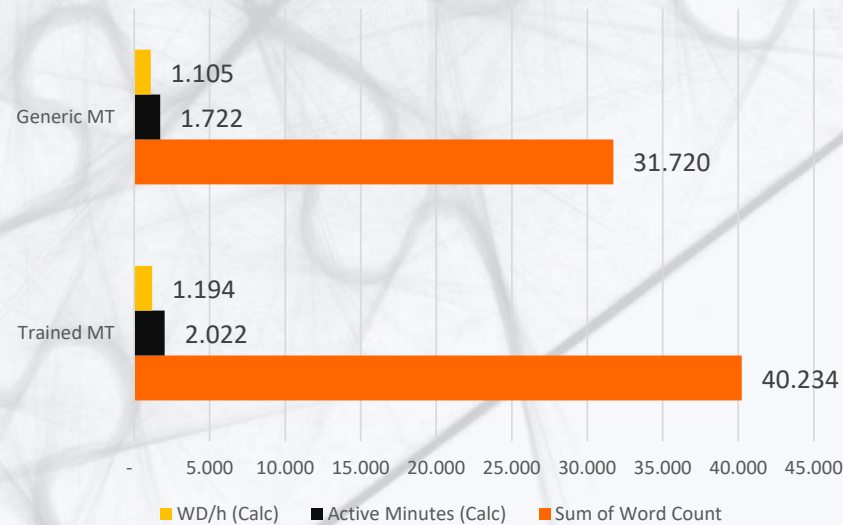
	Total	Scientific	Mechanics
Orders	12	7	5
Word count	89.465	58.176	31.289
Post-editors	6		
MT Engine(s)	1 Generic + 2 Trained		

Post-Editor	# texts	# words
PE1	2	12.785
PE2	1	4.992
PE3	2	10.543
PE4	1	11.725
PE5	3	33.330
PE6	3	16.090

AGLATECH14

# PRODUCTION PT TESTS

## TEST RESULTS



**Scientific Productivity  
Generic vs Trained:**

**-3%**

**Scientific Productivity  
Trained vs HT:**

**66%**

**Scientific Productivity  
Generic vs HT:**

**62%**

**Mechanics Productivity  
Generic vs Trained:**

**-15%**

**Mechanics Productivity  
Trained vs HT:**

**48%**

**Mechanics Productivity  
Generic vs HT:**

**0%**

**Productivity difference  
Generic vs Trained:**

**-7%**

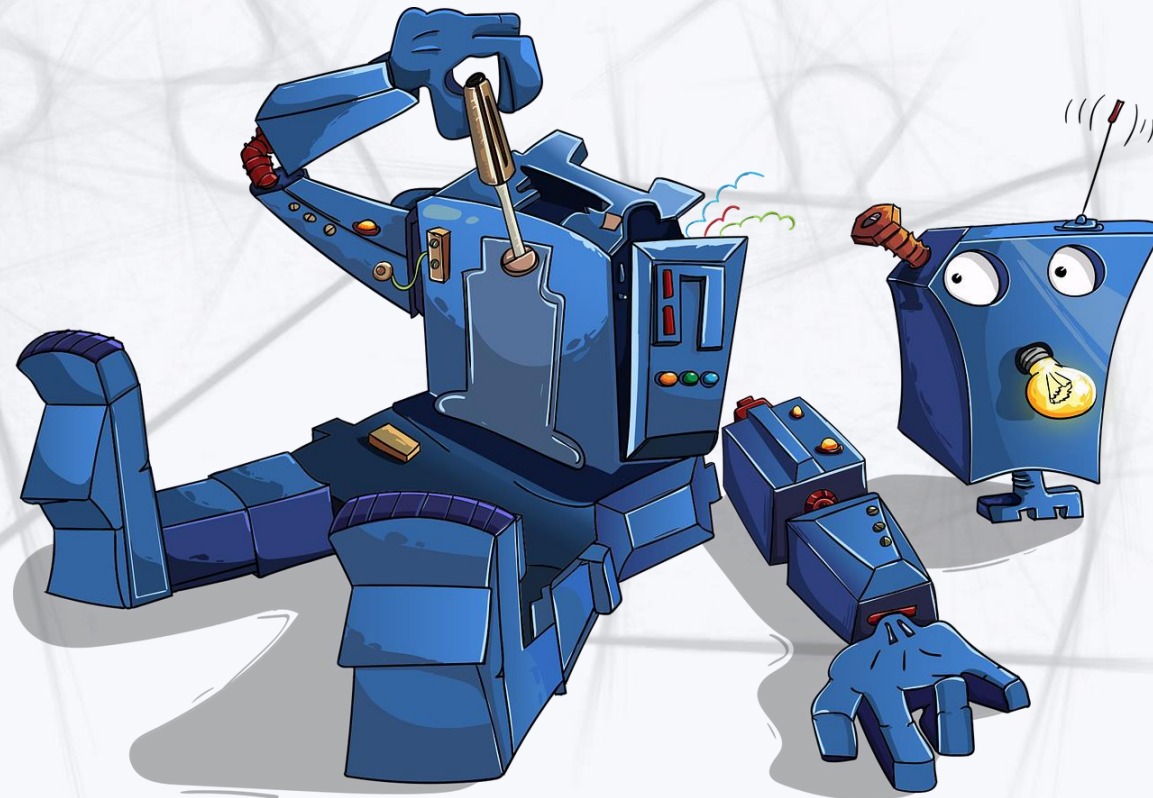
**Productivity difference  
Trained vs HT:**

**59%**

**Productivity difference  
Generic vs HT:**

**47%**

# QUESTIONS?



AGLATECH14





**GRAZIE**

[emurgolo@aglatech14.it](mailto:emurgolo@aglatech14.it)